



Monument Gateway

Typical Gateway

Directional / Trailblazer



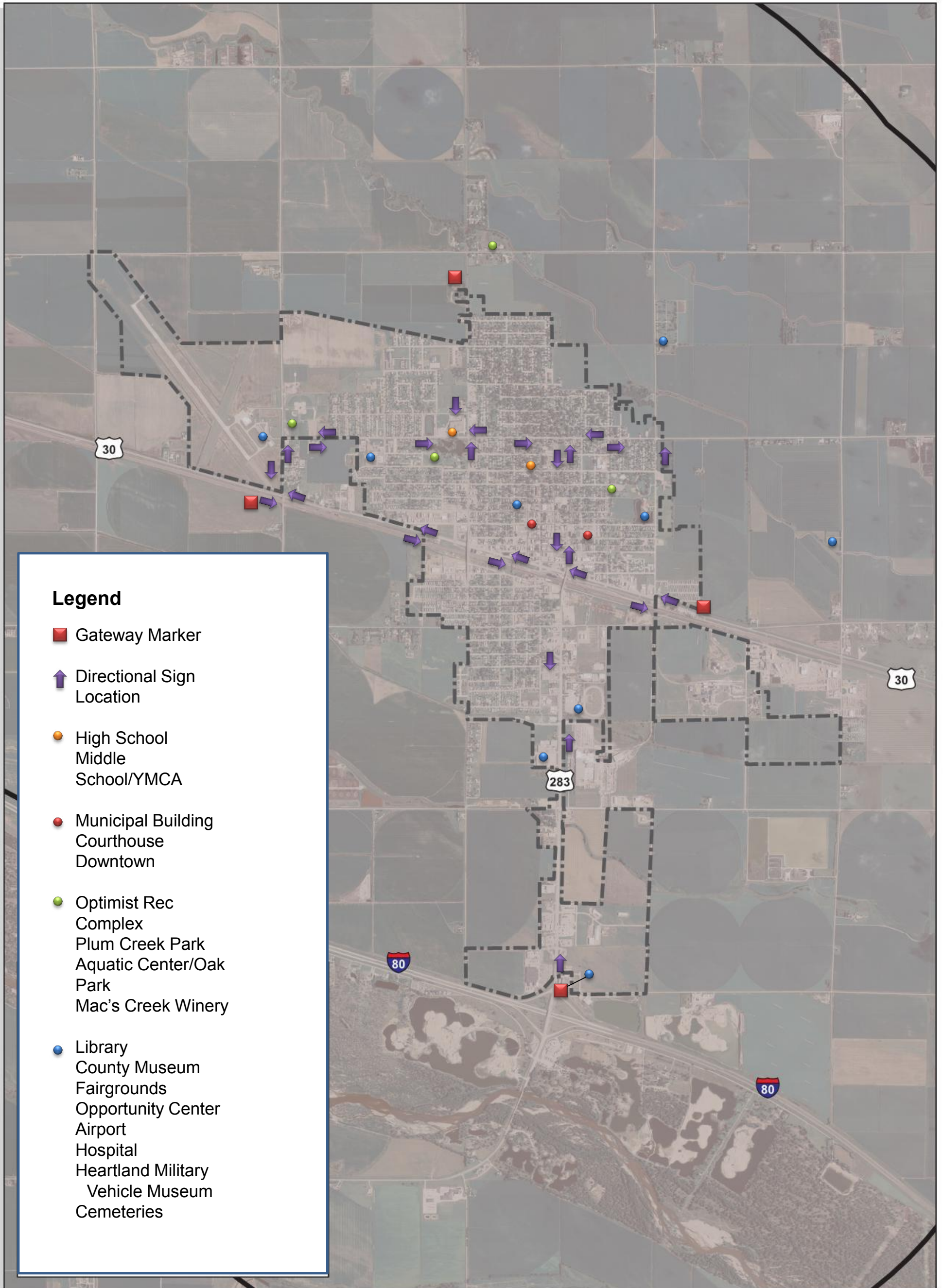
Destination Identifiers

District Identifiers

Parking Identifiers

Source: City of Alexandria, VA Wayfinding Program Design Guidelines

Figure 62: Wayfinding Examples

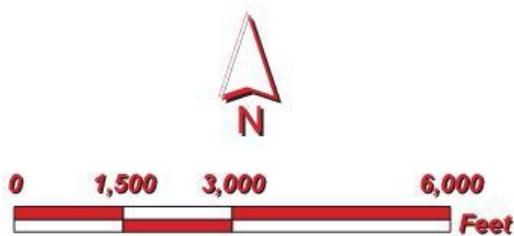


Legend

- Gateway Marker
- ↑ Directional Sign Location
- High School
Middle School/YMCA
- Municipal Building
Courthouse
Downtown
- Optimist Rec Complex
Plum Creek Park
Aquatic Center/Oak Park
Mac's Creek Winery
- Library
County Museum
Fairgrounds
Opportunity Center
Airport
Hospital
Heartland Military
Vehicle Museum
Cemeteries

Figure 63: Potential Wayfinding Map, Lexington

**City of Lexington
Dawson County, Nebraska**
Potential Wayfinding Signage System



Created By: JWC
Date: June 2013
Software: ArcGIS 10
File: 100999



This map was prepared using information from record drawings supplied by JEO and/or other applicable city, county, federal, or public or private entities. JEO does not guarantee the accuracy of this map or the information used to prepare this map. This is not a scaled plot.