

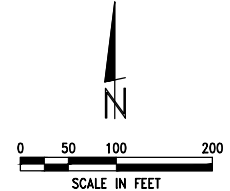
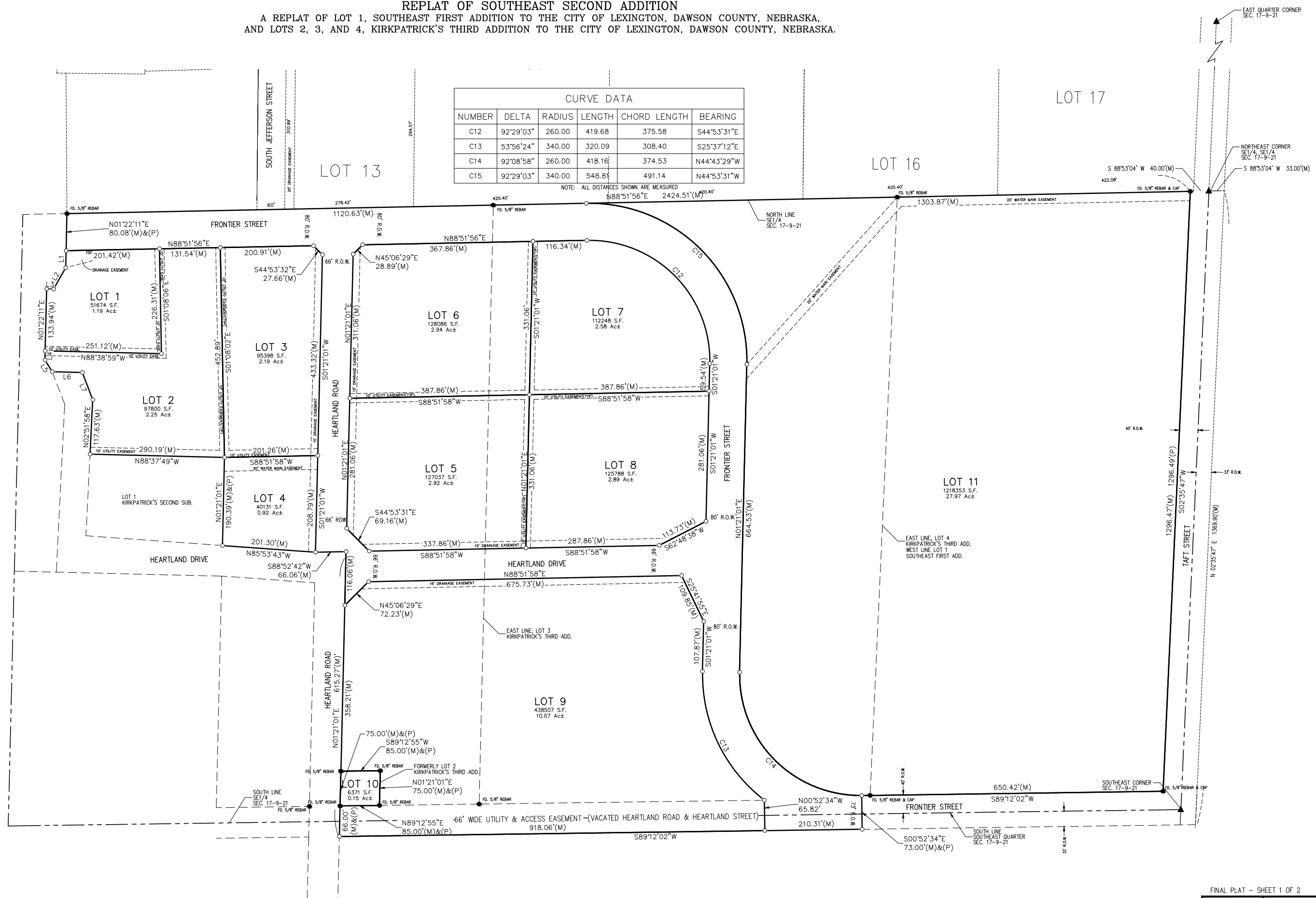
**REPLAT OF SOUTHEAST SECOND ADDITION**  
 A REPLAT OF LOT 1, SOUTHEAST FIRST ADDITION TO THE CITY OF LEXINGTON, DAWSON COUNTY, NEBRASKA,  
 AND LOTS 2, 3, AND 4, KIRKPATRICK'S THIRD ADDITION TO THE CITY OF LEXINGTON, DAWSON COUNTY, NEBRASKA.

CURVE DATA					
NUMBER	DELTA	RADIUS	LENGTH	CHORD LENGTH	BEARING
C12	92°29'03"	260.00	419.68	375.58	S44°53'31"E
C13	53°56'24"	340.00	320.09	308.40	S25°37'12"E
C14	92°08'58"	260.00	418.16	374.53	N44°43'29"W
C15	92°29'03"	340.00	548.81	491.14	N44°53'31"W

NOTE: ALL DISTANCES SHOWN ARE MEASURED

LINE DATA		
NUMBER	LENGTH	BEARING
L1	37.04	N01°22'11"E
L2	52.70	N29°41'25"E
L3	15.00	S88°37'49"E
L4	19.67	N01°22'11"E
L5	29.95	N32°01'44"W
L6	64.87	N88°37'49"W
L7	63.01	N20°58'19"W

NOTE: ALL DISTANCES SHOWN ARE MEASURED AND PLATTED



- = CORNERS ESTABLISHED (5/8"x24" REBAR W/ LS 568 CAP)
- + = CALCULATED POINTS
- = CORNERS FOUND
- (M) = MEASURED DISTANCE
- (P) = PLAT DISTANCE
- (R) = RECORDED DISTANCE

**SECTION CORNER TIES**

SOUTHEAST CORNER, SOUTHEAST QUARTER SEC. 17, T9N, R21W FOUND 1" REBAR  
 48.1'-NE - NAIL IN TOP FENCE POST  
 42.9'-NE - HOLE IN CMP  
 47.0'-SE - HOLE IN CMP  
 33.7'-SW - NAIL & CAP IN POWER POLE  
 45.4'-SW - HOLE IN CMP  
 43.0'-NW - N & CAP IN POWER POLE

EAST QUARTER CORNER SEC. 17, T9N, R21W FOUND 1" REBAR  
 33.0'-WEST - CONC. WITNESS CORNER  
 NO OTHER TIES AVAILABLE



JUL 19, 2011 10:42:02 Location: G:\Projects\127127-01-10-11\DWG-Dwg\Sheet Drawings\Replat - SH\_FINAL\_PLAT-SE 2nd Add.dwg

