

**ONE & SIX YEAR STREET IMPROVEMENT PLAN**  
 CITY OF LEXINGTON  
 Planning Period from 2003 to 2009  
 Project No. 127-A1-001

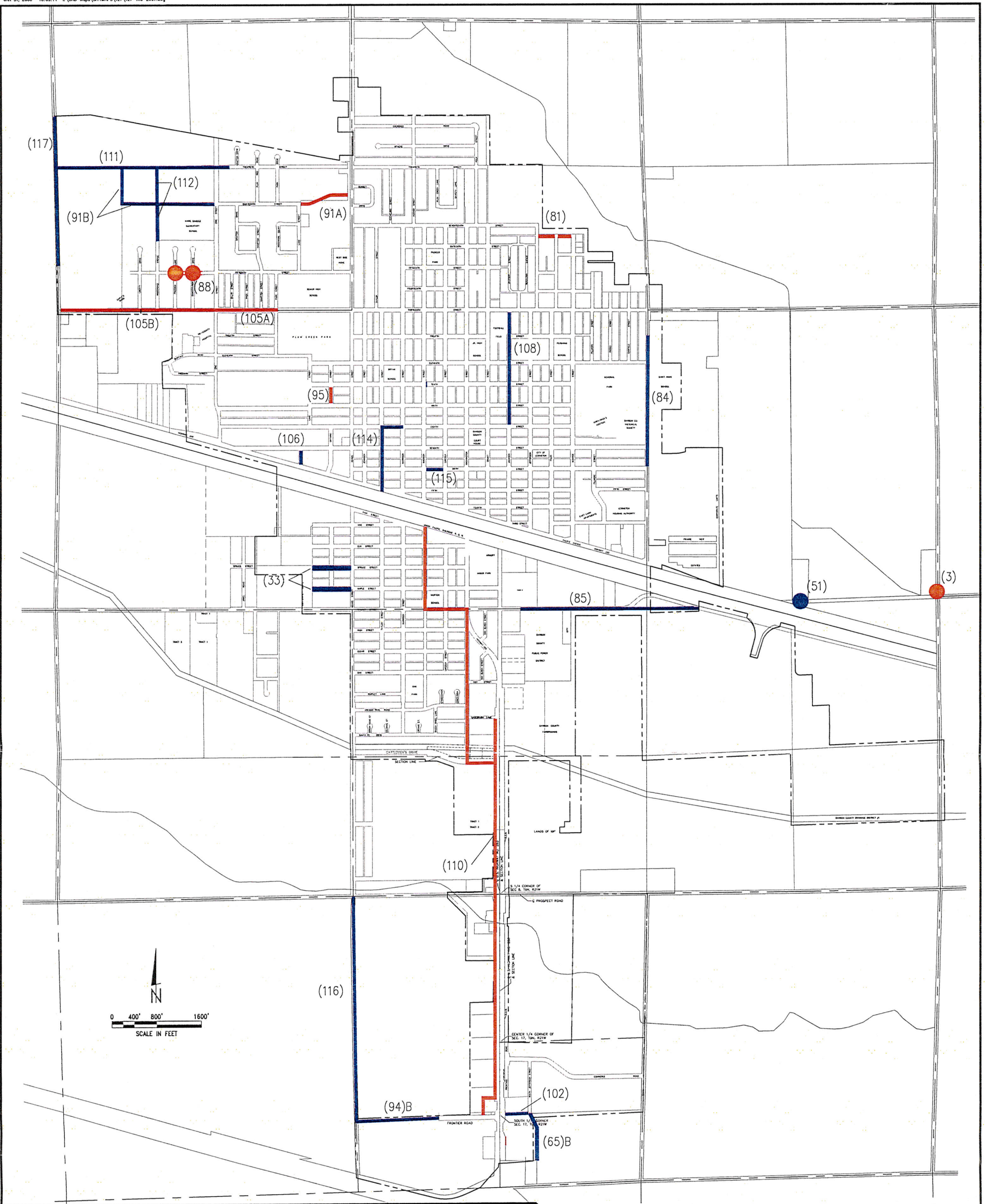
ONE YEAR PLAN

	<u>Program No.</u>	<u>Project and Description</u>	<u>Estimated Project Cost</u>
1.	(3)	<b>Bridge over Spring Creek</b> <i>Replacement of bridge over Spring Creek approximately 1.0 mile east of U.S. Hwy 30 &amp; Taft Street.</i>	\$80,000
2.	(81)	<b>17<sup>th</sup> Street Paving Improvements</b> <i>17<sup>th</sup> Street paving improvements from Jefferson to Monroe Street.</i>	\$35,000
3.	(88)	<b>15<sup>th</sup> Street Intersection Improvements</b> <i>Rehabilitation of paving, intersection returns, and storm sewer inlets/piping @ 15<sup>th</sup> &amp; Constitution and 15<sup>th</sup> &amp; Freedom</i>	\$50,000
4.	(91A)	<b>18<sup>th</sup> Street Paving</b> <i>Street paving from NE Hwy 21 to Lake Street.</i>	\$ 100,000
5.	(95)	<b>Ontario Street Paving Improvements</b> <i>Paving improvements on Ontario Street from 9<sup>th</sup> to 10<sup>th</sup> Street.</i>	\$45,000
6.	(105A) & (105B)	<b>Reconstruction of 13<sup>th</sup> Street from Park Street to Airport Road</b> <i>Reconstruction of paving from Park Street to Airport Road, and utility improvements from Park Street to Erie Street</i>	\$1,700,000
7.	(110)	<b>Hike/Bike Trail in South Lexington</b> <i>An improved hike/bike trail from the Madison Street Pedestrian Crossing to the I-80 Interchange area.</i>	\$580,000

## SIX YEAR PLAN

	<u>Program No.</u>	<u>Project and Description</u>	<u>Estimated Project Cost</u>
1.	(33)	<b>Maple and Spruce Street Paving Improvements</b> <i>Paving improvements on existing gravel streets to the west of Adams Street.</i>	\$100,000
2.	(51)	<b>Bridge over City Drainage Ditch</b> <i>Replacement of bridge over the City drainage ditch approximately ½ mile east of U.S. Hwy 30 and Taft Street.</i>	\$80,000
3.	(65B)	<b>Jefferson Street Paving Improvements</b> <i>Paving improvements on Jefferson Street south of Frontier Street Extended..</i>	\$200,000
4.	(84)	<b>Taft Street Paving Improvements</b> <i>Rehabilitation of concrete paving on Taft Street from 6<sup>th</sup> Street north to 13<sup>th</sup> Street.</i>	\$325,000
5.	(85)	<b>Walnut Street Overlay Project</b> <i>Paving improvements of existing asphalt street from near U.S. Hwy 283 to ½ mile east.</i>	\$70,000
6.	(91B)	<b>18<sup>th</sup> Street Paving Improvements</b> <i>18<sup>th</sup> Street paving from Airport Road east to Erie Street.</i>	\$250,000
7.	(94B)	<b>Wal-Mart Subdivision Paving</b> <i>Paving improvements from South Adams Street east to Wal-Mart development.</i>	\$250,000
8.	(98)	<b>Miscellaneous Asphalt Overlay Projects</b> <i>Locations to be determined as funds are available.</i>	\$225,000
9.	(102)	<b>Link Paving Improvements</b> <i>Paving improvements on link road from U.S. Hwy 283 to Jefferson Street south of McDonalds Restaurant.</i>	\$100,000
10.	(106)	<b>Lake Street Paving Improvements</b> <i>Paving on Lake Street from US Hwy #30 to 7<sup>th</sup> Street</i>	\$60,000
11.	(108)	<b>Paving Improvements on Jackson Street</b> <i>Street paving improvements from 8<sup>th</sup> Street to 13<sup>th</sup> Street</i>	\$900,000
12.	(109)	<b>Various Section of Hike/Bike Trails</b> <i>Paving of various sections of the Master Trail Plan</i>	\$125,000
13.	(112)	<b>Independence Avenue Paving Improvements</b> <i>Paving on Independence Avenue from 18<sup>th</sup> Street to 20<sup>th</sup> Street</i>	\$60,000
14.	(114)	<b>Taylor Street Storm Sewer Improvements</b> <i>Storm Sewer Improvements form US Hwy #30 to Taylor Street and one block to the east on 8<sup>th</sup> Street</i>	\$125,000
15.	(115)	<b>6<sup>th</sup> Street Asphalt Overlay Improvements from Lincoln Street to Madison Street</b> <i>Asphalt overlay to improve the driving profile</i>	\$17,000

- |     |       |  |           |
|-----|-------|--|-----------|
| 16. | (116) | <b>Paving on South Adams from Prospect to Frontier Street Extended</b><br><i>Street paving to provide access to South Adams Street and Frontier Street</i>       | \$300,000 |
| 17. | (117) | <b>Airport Road from Airport Access Road North</b><br><i>Airport Road paving improvements from the access road to the Airport north to the Corporate Limits.</i> | \$200,000 |



# CITY OF LEXINGTON ONE AND SIX YEAR IMPROVEMENT PLAN 2007 THRU 2012

## LEGEND

**PROJECTS IN THE ONE YEAR PLAN** █

**PROJECTS IN THE SIX YEAR PLAN** █

- ADDITIONAL PROJECTS IN THE SIX YEAR PLAN
- (98) - MISCELLANEOUS ASPHALT OVERLAY PROJECTS
  - (99) - MISCELLANEOUS SIDEWALK HANDICAP SIDEWALK IMPROVEMENTS
  - (109) - MISCELLANEOUS HIKE/BIKE TRAILS AROUND THE COMMUNITY