

RESOLUTION NO. 88-13

WHEREAS, the State of Nebraska will be designating a route as a future north-south expressway through the state;

AND WHEREAS, we are interested in the economic development, traffic access, travel and tourism industry, and future growth of the western two-thirds of Nebraska;

AND WHEREAS, industry located within the Lexington, Nebraska, area will benefit greatly from improved north-south transportation facilities;

AND WHEREAS, we want citizens in our area to have improved access to health care, education, and other services.

AND WHEREAS, we prefer that the north-south expressway be constructed in the most cost-effective manner;

AND WHEREAS, we believe the north-south expressway should be as centrally located in the state as is reasonably possible;

AND WHEREAS, we believe the north-south expressway should be a reasonable distance from any other major north-south expressways;

BE IT HEREBY RESOLVED that we support the designation of U. S. Highway 281 as the north-south expressway in the State of Nebraska.

PASSED AND APPROVED this 22nd day of November, 1988.

CITY OF LEXINGTON, NEBRASKA

BY Robert L. Hawks
Mayor

ATTEST:

James E. Malgouh
City Clerk



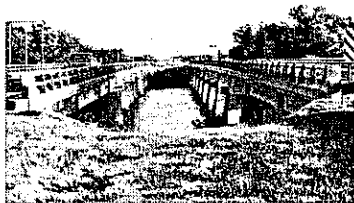
Why U.S. Highway 281 Is The Logical Choice

Travel & Tourism

Tourism is Nebraska's third largest industry. Along or near Highway 281 are some of the state's most-visited attractions: Stuhr Museum • Hastings Museum • Plainsman Museum • Willa Cather Memorial • Sandhill crane migration • Pioneer Village • Horse racing • Calamus Reservoir • Harlan Reservoir • Sherman Reservoir • Fort Kearney • Fort Hartsuff • Pheasant hunting •

Even attractions like NebraskaLand Days in North Platte, Lake McConaughy, and the scenic Sandhills would benefit from additional traffic on Highway 281.

A Highway 281 corridor would attract people traveling to and from Canada and Mexico. It would also bring people through our state on their way to the West Coast, Pacific Northwest, Southwest, and Gulf Coast.



Many expensive structures, such as 4-lane expressway bridges over the Platte, have already been built on Highway 281.

Cost Effectiveness

Some of the most expensive structures and sections of expressway are already finished along Highway 281.

There are already nearly 30 miles of 4-lane expressway connecting Grand Island and Hastings. Four-lane construction is complete within both cities as well as in St. Paul. Four-lane expressway bridges have been built over the Platte River, Wood River, and Interstate 80.

Land values in central Nebraska are less than those along other routes being considered. In fact, the state already owns right-of-way for three lanes of highway along much of the route. That means reduced costs for the state and its taxpayers.

Location

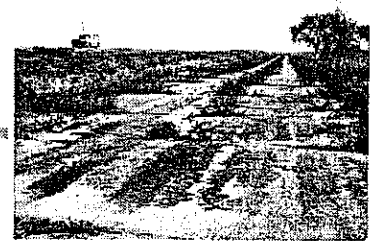
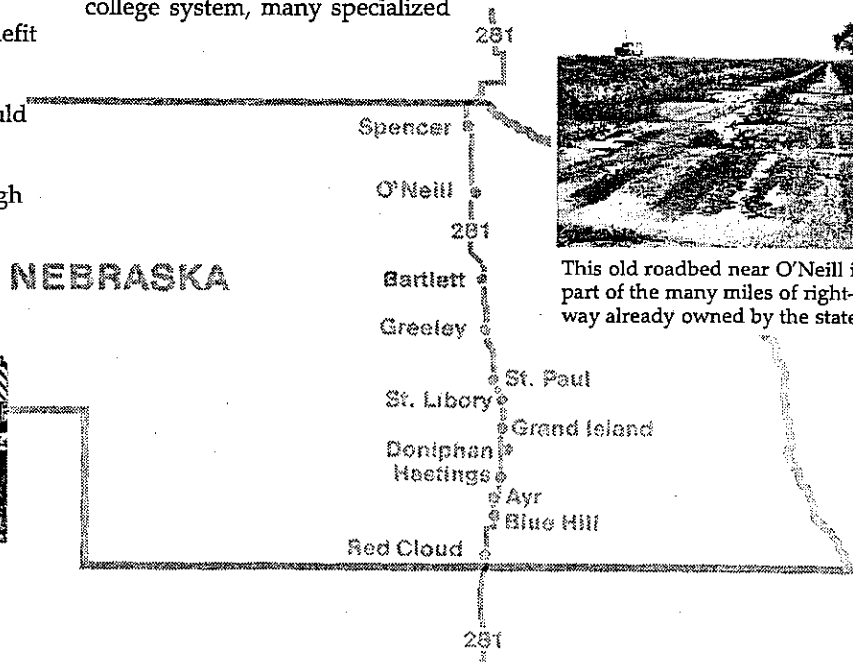
Highway 281 is located in the heart of Nebraska. It serves as a major north-south route for the western two-thirds of the state. Along and within 60 miles either side of Highway 281 are some of Nebraska's most populous cities: Hastings, Grand Island, Kearney, Norfolk, Columbus, York, Holdrege, Minden, Aurora, Superior.

Highway 281 serves an area that is home to Nebraska's largest state college, a large private college, a three-campus community college system, many specialized

schools, major retail trade centers, and regional health care facilities.

On average, more than 2300 vehicles travel Highway 281 in Nebraska each day. About 15% of them are trucks. Traffic counts get as high as nearly 15,000 in some areas—with up to 20% of that traffic being trucks.

There is no major north-south expressway within 150 miles of Highway 281. Other routes being considered are within 50 to 100 miles of Interstate 29.



This old roadbed near O'Neill is just part of the many miles of right-of-way already owned by the state.

Other Connections

Highway 281 is part of an international highway system that reaches from Flin Flon, Canada, to Mexico City.

About 40% of Highway 281 is four-lane in Texas. Other states along the 2,000-mile route have stretches of four-lane.

North Dakota, South Dakota, Kansas, Oklahoma, and Texas all recognize the importance of this highway. Nebraska should take the lead in this project rather than waiting for other states to determine our fate.

Economic Development

Economic diversity is the key to the growth of central and western Nebraska. A Highway 281 corridor would have a tremendous impact upon the local and national development efforts of communities in the western two-thirds of the state.

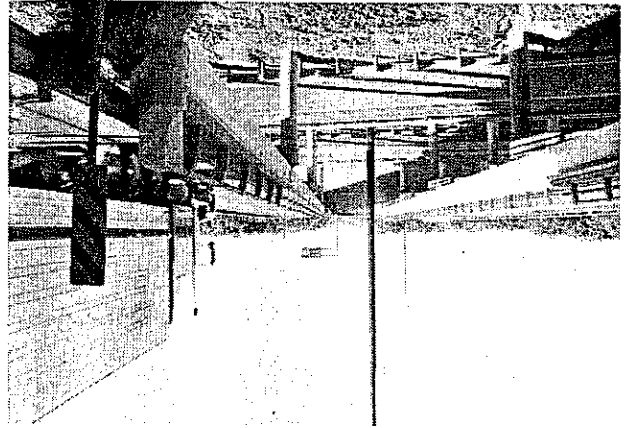
Improved transportation will make it easier to promote central and western Nebraska to prospective business and industry.

If the north-south expressway is located in the eastern part of the state, it could be 30 to 50 years before central and western Nebraska have another chance for an expressway. By then, it could be too late.

Here are the reasons why....

The intersection of Interstate 80 and U.S. Highway 281 is the "Crossroads of Nebraska." It is here that two of the state's most important roadways meet. Interstate 80 is Nebraska's main artery for people and products traveling east and west. Now the time has come to designate a future north-south corridor for Nebraska. As the other half of Nebraska's most important intersection, U.S. Highway 281 is a leading contender for this designation.

The intersection of Interstate 80 and U.S. Highway 281 (also known as the American Legion Memorial Highway) is one of Nebraska's busiest crossroads.



U.S. Highway 281: One Half of Nebraska's Most Important Intersection

The Future

Nebraskans are demanding better links between the urban and rural parts of the state. Citizens in greater Nebraska will require better access to regional health care and education.

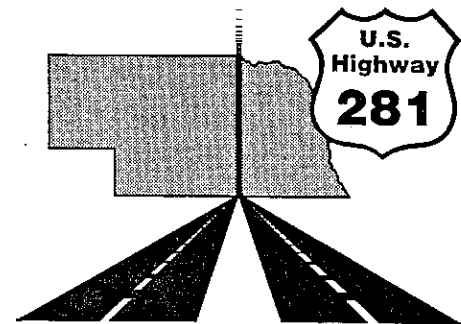
A properly selected north-south corridor will ensure vital service to all Nebraskans as this state faces its future.

Highway 281 is the one route which can be supported by much of greater Nebraska. It already serves as a hub for a great deal of the states traffic flow.

That's why U.S. Highway 281 is the logical choice as the north-south expressway for Nebraska's future.

For More Information

Jack Crowley, Chairman
Highway 281 Steering Committee
City National Bank Bldg.
Hastings, NE 68901
402/461-2169



North-South Expressway

U.S. Highway 281

The American Legion Memorial Highway

The Logical Choice As
Nebraska's North-South
Expressway