



City Council Members Sworn In



Left to right: John Salem, Dora Vivas, Mayor John Fagot, Jared Jacob, Jeremy Roberts

Following the general election every two years, the City Council holds an “organizational meeting” on the first Tuesday of December. The newly elected or re-elected council members take the oath of office, and choose one from among the five members to be president (mayor) and one vice president. On December 3, 2024, John Fagot was named President and John Salem Vice-President.

Two Councilmembers, Dora Vivas and Jeremy Roberts, were re-elected and renewed their oath of office, as did Jared Jacob, the newly elected Councilmember. Jacob fills the Council position recently held by Steve Smith, who chose not to run again after eight years of service. Jacob has served on the City’s Planning Commission since 2017.





Lexington Veterans Pavilion lit up for the holidays to honor our service members. Be sure to drive through and thank a Veteran this holiday season! (near 7th & Taft)

LEXINGTON
LEXUS
UTILITIES SYSTEM
308-324-2343

Tips to Prevent Frozen Pipes

➤ **Leave cabinet doors open** so house heat can warm the pipes better.

➤ **Leave Water Running** - Just a small, slow stream/trickle is usually enough to keep the pipes from freezing.

➤ **Unhook Garden Hoses.** You can also install frost-free faucets and insulate outdoor faucets

➤ **Do not set your thermostat lower than 55°F,** even if you plan to be away for an extended time.

➤ **Learn where your main water shutoff valve is.** If pipes burst, it could prevent a lot of damage.

Mobile Homes Need Special Pipe Care

➤ Install **Insulated Tape Wrap** or even better **Electric Heat Tape** on pipes under the trailer.

➤ Make sure the **trailer is skirted.**

OPEN HIT NIGHT

TUESDAYS:
December 3, 10, 17
6:30 - 8:30 pm

BASEBALL GOLF SOFTBALL

The Lexington Optimist Hitting Complex - Open Hit Night - available for all ages for use of the batting cages, pitching machines, and golf range nets. Middle School students and younger need to be accompanied by an adult. High School and Adult participants are welcomed without supervision.



New Vintage Row Apartments Now Open - Affordable Senior Housing



Lexington now has 35 new apartment units with the opening of “The Vintage Row” west of Liberty Drive and south of 13th Street. A ribbon-cutting ceremony was held October 10 in front of the complex’s clubhouse. City and State officials joined with representatives from the developer, Hoppe Homes. The project is the

latest payoff from the City of Lexington’s ongoing efforts to increase the number of dwelling units, especially affordable housing. The Nebraska Department of Economic Development provided \$669,000 in National Housing Trust Funds to support the project.





EnergyWise Tip: Night Lights



by NPPD Energy Efficiency Program Manager Cory Fuehrer

For something as ubiquitous as electric lighting, it may be hard to imagine a time when our homes were without it. However, using electricity for residential illumination only became common in the United States during the 1940s. Since then, we've been extending our days into our nights, often with a flick of a switch.

Consider that almost everyone has a light or a number of lights they rely on to nurse their night owl tendencies. Why wouldn't you want efficiency, quality and the most overall value from those essential fixtures? Here are a few of the most common, including opportunities for their improvement:

Ceiling fixtures

Around 2500 BC, the ancient Egyptians began using the first known ceiling lights. Made from clay, these lamps burned animal fat, bees wax or plant-based oils including olive, sesame and grape-seed. Fast-forwarding to the 1950s, almost all residential ceiling lights required incandescent bulbs. While much safer and efficient than producing light from combustion, about 90%

of the electricity they consumed produced heat rather than light. Today, homeowners can select light-emitting diode (LED) replacement bulbs that require six to seven times less electricity to produce the same amount of light while lasting up to 12 times longer. Another option consumers have is to install fully dimmable LED replacement bulbs and the appropriate dimmer switch. By doing so, users can adjust light levels to



their desired effect. For even greater energy efficiency and longevity, consider replacing an old fixture with a solid-state LED fixture. Many are also fully dimmable. Solid-state fixtures have embedded LEDs so bulb replacement is no longer necessary.

Plug-in lamps

It is common to leave a wall or table lamp on for someone needing to pass through an area of the home after everyone else has gone to bed. In 1902, bulbs with two carbon filaments were created to allow for adjustable lighting levels. Shortly thereafter, manufacture of lamps with multi-level switches allowed homeowners to select multiple illumination levels. This reduced the amount of electricity used when minimal levels of illumination were appropriate. With a simple twist of the switch, full lighting levels could be restored. As with other socket-type fixtures, improving efficiency is as simple as replacing older incandescent bulbs with three-way LED replacement lamps.

Outdoor sconces and pathway lights

Especially as we enter the winter season and our nights become longer, exterior lighting becomes a matter of maintaining safety. Sidewalks can become snow or ice-

(continues on next page)



EnergyWise Tip: Night Lights

(continued from previous page)

covered, which creates slipping hazards. While converting these to LED is an easy option to improve efficiency, when was the last time you cleaned these fixtures? Over the past forty years, The Illuminating Engineering Society has commissioned several luminaire dirt depreciation studies to find that outdoor fixtures can lose 11 to 29 percent of their light output due to outdoor environments. A simple way to reestablish their lighting levels is to add "fixture" cleaning to your fall routine. After a season of dusty winds, lawn mowing and plants pollenating, this is the perfect time to restore their functionality.

Plug-in lights

How easy is it to plug a small night light into an electric socket to provide a little extra illumination where you need it? Though they may only require between 2 and 7 watts of power, many operate continuously and do not switch off during the day. Over the course of a year, they can double the amount of energy needed to provide that small amount of extra safety and security. Instead, install an LED night light with a photosensor switch. Most require one watt or less of power to operate and automatically switch "on" or "off" depending on the amount of light from other sources.

In partnership with Nebraska Public Power District, Lexington Utilities System wants to help you effectively and efficiently light up your night when and where you need it! For additional ways you can save energy every day, contact Lexington Utilities System or visit www.energywisenebraska.com.



The City's website has tools to help you save energy and money.



Interactive Energy Home



← **Look for this button at**

www.cityoflex.com/departments/utilities

LEXINGTON

150
YEARS

1874 - 2024





Members of the **Lexington Police Department** once again participated in **No Shave November**, donating all proceeds to **Operation Santa Claus** for Christmas gifts to children. Shown left to right: School Resource Officer (SRO) **Joel Kinney**, SRO **Matt Roberts**, **Jason Dillard** (Optimist Club), Sgt. **Edwin Perdomo**, and Officer **Andy Manzo**.



Remember, it ALL drains to our lakes and rivers



Help keep pollution out of storm drains

Only rain in the drain!

That's because storm drains and roadside ditches lead directly to our lakes and rivers. So, any oil, pet waste, leaves, trash, or dirty water from washing your car that enters a storm drain gets into our lakes and rivers. With thousands of people living in and around Lexington, we all need to be aware of what goes into our storm drains.

So what can you do? Simple:

- Sweep fertilizer off of driveways and sidewalks, back onto your lawn.
- Keep leaves, grass clippings, trash, and fertilizers out of storm drains.
- Do not dump motor oil, anti-freeze, chemicals, pet waste, dirty soapy water, or anything else down the storm drains.
- Volunteer to label the storm drains in your neighborhood to inform your neighbors that storm drains flow directly to our lakes and rivers (contact Keep Lexington Beautiful, (308) 324-7986, or keeplexbeautiful@yahoo.com).

KEEP OUR WATER CLEAN!



Support provided by
Nebr. Dept. of
Environment
& Energy



www.cityoflex.com





Library News



907 N Washington
(308) 324-2151



Library Hours

Mon-Thur: 9 am - 8 pm

Fri & Sat: 9 am - 5 pm

Sunday: CLOSED

by Jennifer Norton
Library Director

*"Ah, how good it is to be among people who are reading."
— Rainer Maria Rilke, Austrian poet and novelist*



Join us December 19 at 5:30 for December's **Holiday Family Fun Night**. A piano recital by various students, holiday music, karaoke, and other activities are planned. Supper begins promptly at 5:30 with the festivities to follow.



Join a **Library Book Club** for the new year. The Lexington Public Library hosts a number of book discussion groups. The **Young Enough Book Club** meets the 4th Monday of the month at 6 pm, **Literary Guild** meets the 4th Tuesday of the month at 9:30 am, **Monday Afternoon Book Club** meets the 2nd Monday of the month at 3 pm, **Spanish Book Club** meets the 4th Tuesday of the month at 6 pm and **Classics Book Club** meets every other month on the 2nd Thursday of the month in January, March, May, July, September & November. Book clubs are a great way to read and to socialize. Call or stop by the library to learn more. 308-324-2151



The 2025 **One Book, One Lexington** title will be announced in January. Stay tuned and get ready to read and to participate in a year's worth of programs, activities and exhibits!



HONOR A VETERAN WITH THIS LASTING TRIBUTE

Thanks to the Lexington Veterans Memorial Committee, you now have the opportunity to purchase a commemorative brick which can be inscribed in honor or in memory of a veteran. The bricks will be installed on the Veterans Pavilion Memorial Wall at the south end of Kirkpatrick Memorial Park.



The process is simple:
fill out the form at
<https://donate.brickmarkers.com/lex>,
(or use the QR code above) and
remit your payment. All the helpful
details are at the website.

Thank you for supporting our local heroes!



SUMMER JOBS - Temporary Seasonal Workers, Part-time

APPLY NOW!

Positions available include:

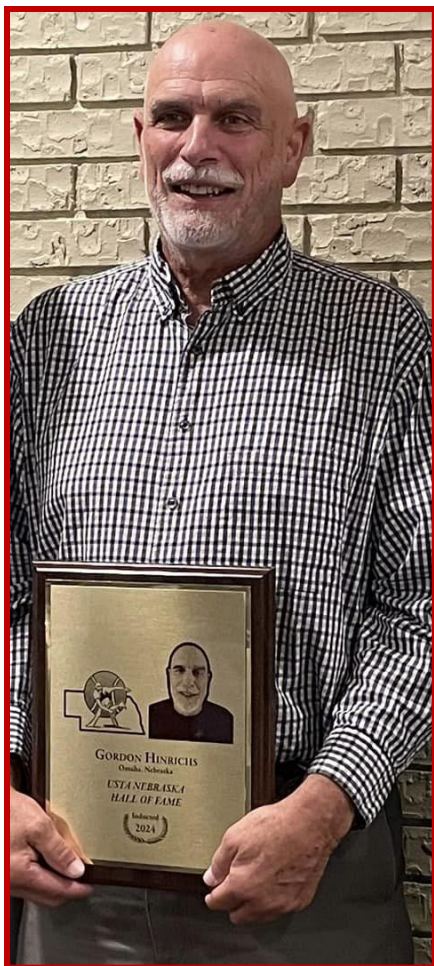
- Concession Workers (age 14+)
- Lifeguards (age 15+)
- City Park and Cemetery Maintenance (age 16+)



The City of Lexington is an Equal Opportunity Employer.
Download an application from the city website,
www.cityoflex.com/human-resources/.



Tennis Awards for Lexington Athletes



Gordon Hinrichs.



Top: Troy, Asher and Jake Saulsbury. Lexington Parks & Recreation Manager. Bottom: Jake Saulsbury and Ella Young.



Central Nebraska was well represented at the Nebraska Tennis Association Hall of Fame banquet in Kearney October 27. Lexington native **Gordon Hinrichs** was inducted into the USA Nebraska Hall of Fame, recognized for earning multiple medals, including a gold medal at the national senior games and his long-standing contributions to the sport and growth of tennis.

The **City of Lexington** received the outstanding diversity achievement award. LHS senior **Ella Young** received recognition for her outstanding sportsmanship. **Asher Saulsbury** was named Jr. High performance player of the year. **Troy Saulsbury** received an award for Outstanding Contributor to Youth Tennis Programs.



Follow us on Facebook!

Get the latest scoops about what's going on in Lexington!
 Facebook users: be sure to search for "City of Lexington, Nebraska" (not to be confused with the generic page the Facebook folks created).
 Only our official page gives you the latest news and updates.

<https://www.facebook.com/pages/City-of-Lexington-Nebraska/157277430966096>





Presents:

Mike Feeken, Strategic Partnerships Advisor



Hear About:

- How access to quality child care impacts the ability for families, businesses, and communities to thrive and about NEW Child Care Tax Credits that could provide innovative ways to support local early childhood infrastructure. and how to access them.

Who Should Attend:

- Employers
- Community Organization Representatives
- Early Childhood Professionals
- County/City/Village/ School Elected Officials & Representatives
- Parents
- Anyone interested in access to quality child care

Location: Central Community College, Rm 204, 1501 Plum Creek Parkway, Lexington

Date/Time: December 10 6:30 PM



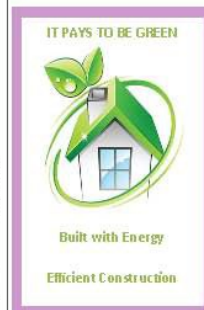
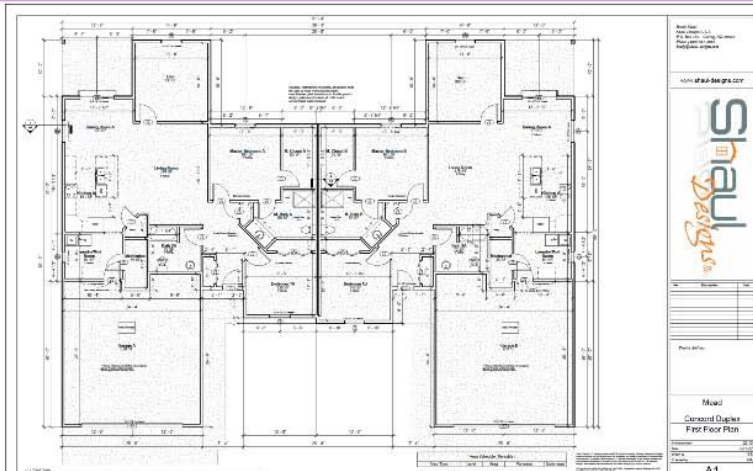
2 UNITS FOR SALE

1909-1911 Battle Green Court

2 BEDROOM - 2 BATH - LUXURY CONDO



The Concord



Contact: *The Greater Lexington Corporation*
greaterlexcorp@cityoflex.com

More information on the following page



The Concord

- \$265,000
- Age restricted community (55+)
- Full service clubhouse
- Cooperative maintenance
 - Lawn care, snow removal, etc.
- Homeowner's Association
- Luxury 2 bedroom + den; 2 bathroom
- 1,650 Square Feet
- Energy efficient construction; all electric unit
- 2-Car oversized garage- 620 sq. ft.
 - Oversized overhead door- 18' X 7'
- Covered patio-120 sq. Ft.
- Water Softener
- Off-street visitor parking
- Area amenities
 - Hospital
 - Parks and Trails
 - Golf Driving Range
 - Recreation Complex
 - Lexington Fieldhouse
 - Lexington Racquet Center/Pickleball Courts



Kitchen



Patio



Oversized Garage

Contact: *Greater Lexington Corporation*

308-324-2341, ext. 1112



Lexington snow and ice removal

Winter weather season is here and the City would like to remind citizens of the following points related to snow removal. There is also the Emergency Snow Route map on the next page.

Property owners are required to remove snow and ice from sidewalks abutting their property, within 48 hours of the snowfall. Removal of snow and ice from sidewalks not only ensures safe passage for pedestrians (including school children), but also limits liability. Someone who sustains injuries from slipping on ice might claim their injuries resulted from property owner neglect. Please remember that snow and ice removed from your property is not to be placed into the street. Instead move it to non-paved areas.

The City needs the cooperation of all citizens as we work to remove snow and ice from the streets. Citizens are encouraged to listen to local radio stations or read the local newspaper (including online) for

announcements of possible Snow Emergency situations where substantial snowfall is experienced or anticipated.



In times of a declared Snow Emergency, parking along streets in the designated Snow Emergency Route is prohibited. Commercial Areas may also be included (see Snow Route map).

Citizens living along these routes are encouraged to comply with the prohibition and move their vehicles from the street.

In addition, during a Snow Emergency, parking in the Downtown area is prohibited. In non-emergency times, citizens are still encouraged to move their parked vehicles off of the street in a reasonable period of time after snowfall to allow City crews access to remove the snow and ice. Information regarding the removal of snow in your area of the City can be obtained by contacting Tom Nelson at 308-324-5995.

The City of Lexington would like to reiterate that snow and ice removal is important for vehicular traffic as well as Pedestrian traffic.

Please take the time to do your part to keep our streets and sidewalks safe. The City of Lexington thanks everyone for their cooperation and prompt attention to this issue.



**801 West Vine St.
308-324-5995
Mon. - Fri.
8 a.m. - 4 p.m.**

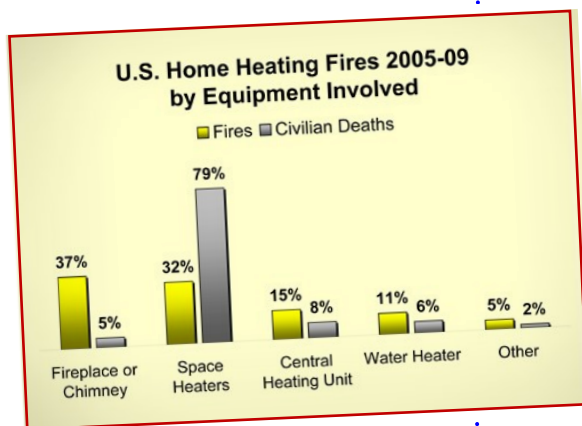
- dispose of furniture, appliances, pallets, and other large items (small fee may apply)
- recycle paper, plastic, and cardboard
- pick up free wood chips or compost





Space Heater Safety

You might be turning on a space heater to keep warm in this cool weather. However, you might not know that thousands of fires are caused every year by space heaters, especially improperly used ones. The National Fire Protection Association says in 2011, space heaters were involved in about 17,850 home fires.



Here are some safety tips from Underwriters Laboratories (UL) and other sources:

- Always read and follow the manufacturer's recommendations.
- Every level of your home should have a working smoke detector that is tested on a monthly basis.
- Keep all space heaters three feet away from anything that could catch on fire.
- Make sure the space heater includes a tip-over switch to ensure that it shuts off if it accidentally tips over.
- NEVER leave a space heater unattended.
- NEVER use a space heater in the room where you will be sleeping.
- NEVER place heaters on furniture. They are designed to be placed on the floor.
- Unless the heater is designed for use outdoors or in bathrooms, do not use in damp, wet areas.
- NEVER place heaters where towels or other objects could fall

on the heater and start a fire.

- Do not use extension cords with space heaters unless absolutely necessary. If you have to use an extension cord, make sure it has a power rating as high or higher as that of the heater itself. Keep the cord stretched out and do not allow it to become buried under rugs

or carpeting. Don't place anything on top of the cord. If the cord ever feels even slightly warm, discontinue use.

- Inspect the heater's cord periodically to look for frayed wire or damaged insulation. Do not use a space heater with a damaged cord.
- Check periodically for a secure plug/outlet fit. If the plug becomes very hot, the outlet may need

to be replaced by a qualified technician. This could be the sign of a potential home wiring issue.



- Use space heaters only as a supplementary, small-area sources of heat. They are not intended to replace the home's heating system, and turning the central heating system down too low may result in water pipes bursting.
- Don't use a space heater to dry your wet clothes or pull it closer when you are in a bath tub.
- Keep pets and children away from space heaters.



- Space heaters take a lot of electricity. They can overload the home's wiring, especially if other high-wattage appliance are on at the same time. This may cause overheating of circuits, which may lead to fires.
- Make sure the space heater you are buying is certified and labeled as such on the box (such as Underwriters Laboratory).
- If you have a **liquid-fueled** space heater, use only the fuel recommended by the manufacturer. The wrong fuel could burn hotter than the equipment was designed for and cause a serious fire.
- When refueling, turn off the heater and let it cool down completely before adding fuel. Wipe away any spills promptly.
- Before you buy a kerosene heater, check with your local fire department to ensure that it is legal in your area.
- Kerosene heaters have a different type of threat with the potential of carbon monoxide poisoning, so take that into consideration.