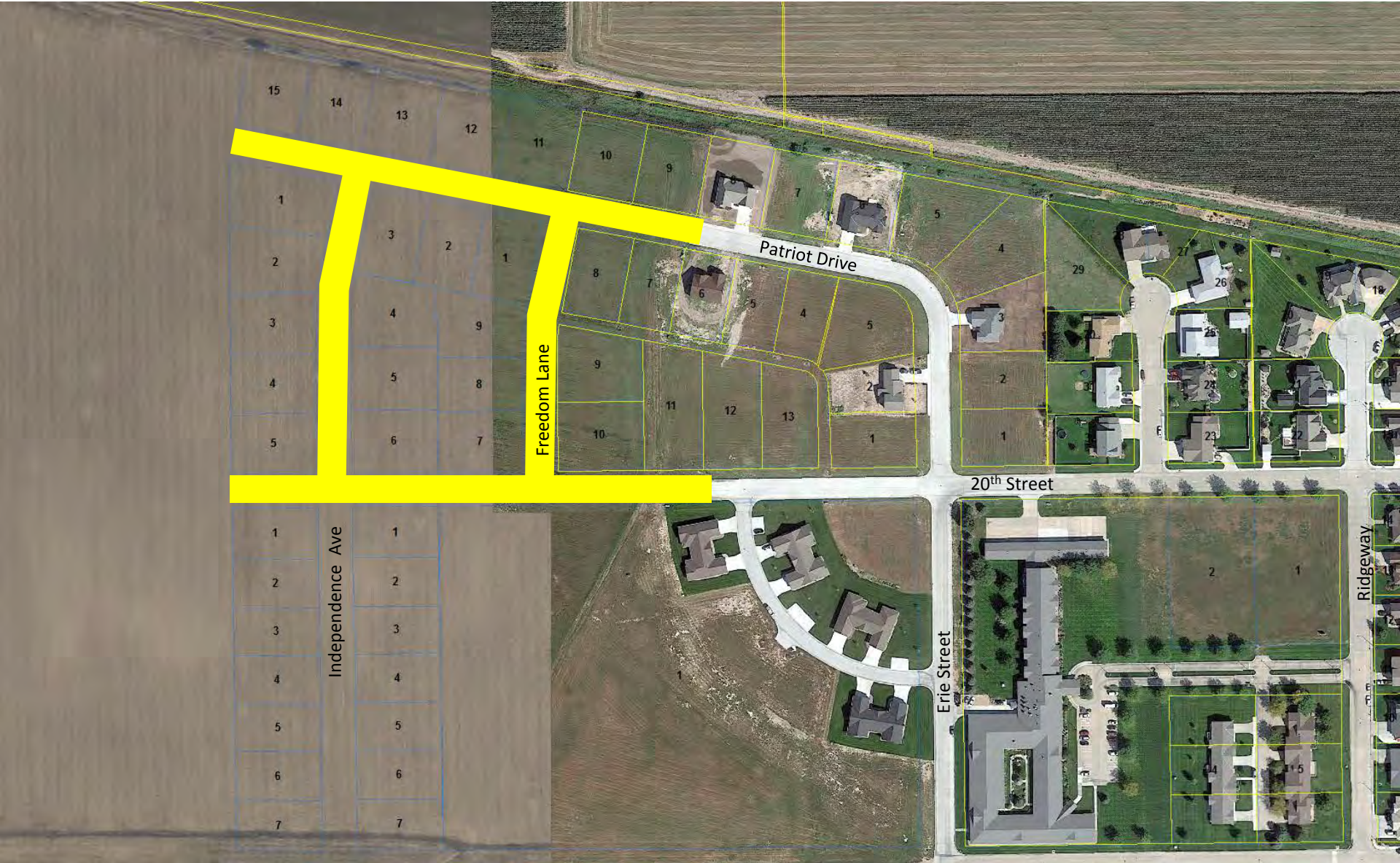
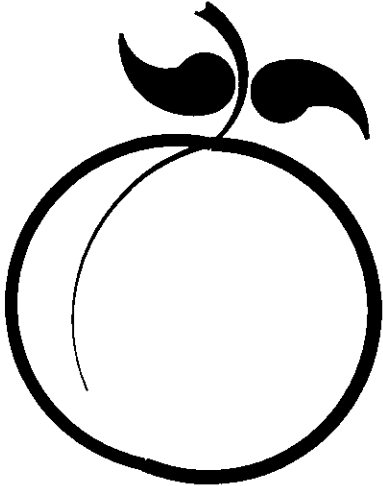


NW 3rd Addition Phase 2 Improvements—General Project Area



DRAWINGS FOR

NORTHWEST 3RD ADDITION PHASE 2 IMPROVEMENTS



INDEX OF DRAWINGS	
SHT. NO.	DESCRIPTION
G-1	TITLE SHEET & INDEX
G-2	LOCATION MAP & NOTES
G-3	TYPICAL CROSS SECTIONS
S-1 to S-4	SANITARY SEWER PLAN & PROFILE
P-1 to P-5	PAVING/STORM PLAN & PROFILE
D-1	SANITARY SEWER DETAILS
D-2	STORM SEWER DETAILS
D-3	INLET STAKING DETAILS & JUNCTION MANHOLE DETAIL
D-4	PAVING DETAILS
D-5	EROSION CONTROL DETAILS
X-1 to X13	CROSS SECTIONS

LEXINGTON, NEBRASKA

M&A PROJECT NO. 127-A1-100-14

**PRELIMINARY
FOR REVIEW**

SET NO. _____
DRAWING NO. _____

UTILITIES

GENERAL DIGGERS HOT LINE
8-1-1



MILLER & ASSOCIATES Consulting Engineers P.C.
1111 Central Avenue - Kearney, NE 68847

NORTHWEST 3RD ADDITION PHASE 2 IMPROVEMENTS
LOCATION MAP & NOTES
 LEXINGTON, NEBRASKA

PRELIMINARY FOR REVIEW

VERIFY SCALES
 BAR IS ONE INCH ON ORIGINAL DRAWING
 0 1"
 IF NOT ONE INCH ON THIS SHEET, ADJUST SCALES ACCORDINGLY.

SCALE: NO SCALE

PROJECT NO. 127-A1-100-14

DATE: MAY, 2015

FIELD BOOK M&A DWG NO.

DRAWN BY: LMS APRVD BY:

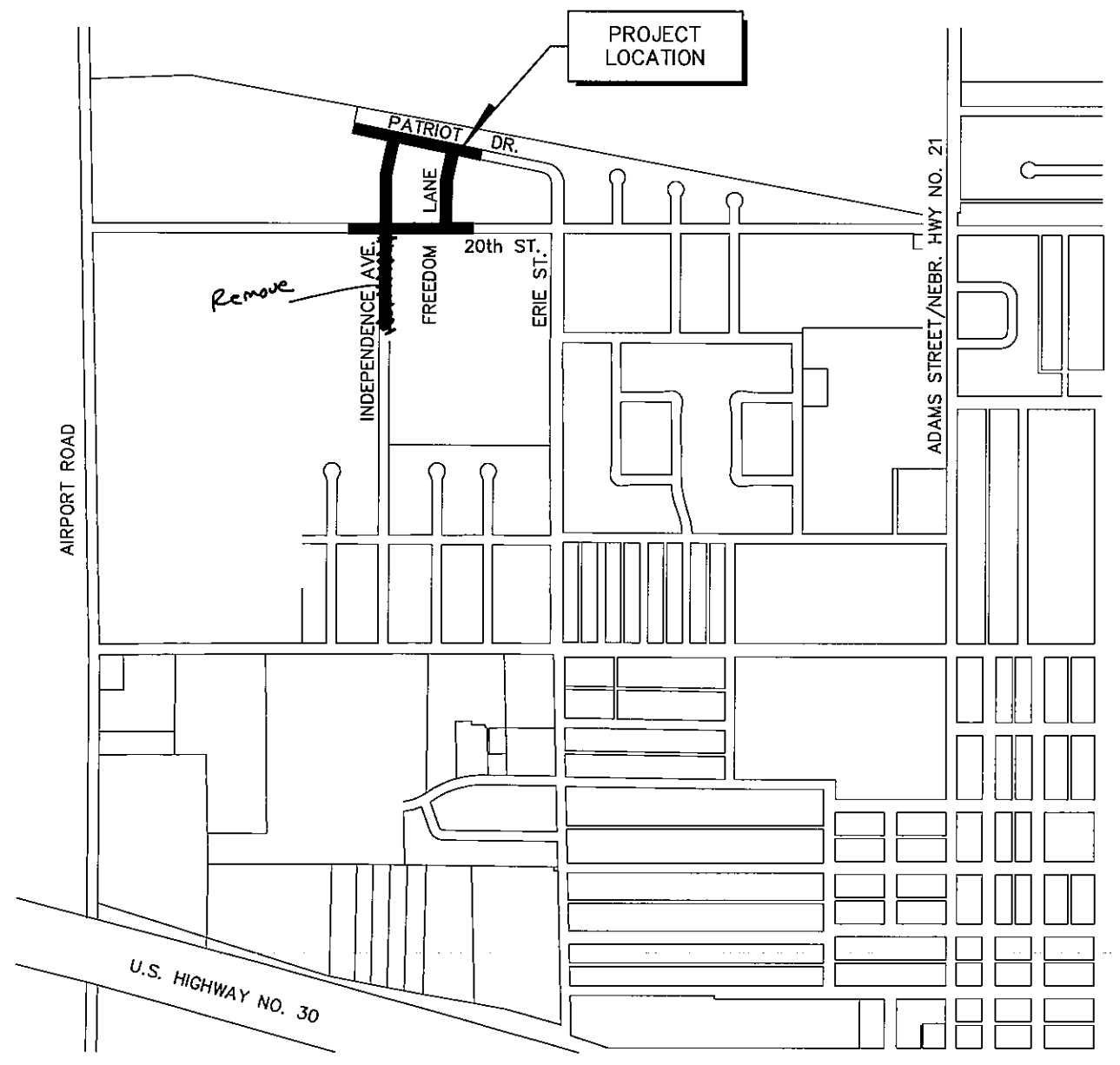
SHEET **G-2**

LEGEND

SYMBOL	DESCRIPTION	SYMBOL	DESCRIPTION
	HEDGE ROW, TREELINE, WOODS		PROPERTY LINE
	HEDGES, BUSHES, SHRUBS OR WOODS		CENTERLINE
	DECIDUOUS TREE AND TRUNK SIZE		SECTION LINE
	CONIFEROUS TREE AND TRUNK SIZE		RIGHT-OF-WAY
	GAS METER OR REGULATOR		PERMANENT EASEMENT
	WATER METER		CONSTRUCTION EASEMENT
	PROPOSED WATER VALVE		12" WATER MAIN AND SIZE
	EXISTING WATER VALVE		36" STORM SEWER AND SIZE
	PROPOSED FIRE HYDRANT		12" SANITARY SEWER AND SIZE
	EXISTING FIRE HYDRANT		OVERHEAD ELECTRICAL LINE
	ELECTRICAL BOX		UNDERGROUND ELECTRICAL LINE
	POWER POLE		UNDERGROUND TELEPHONE LINE
	POWER POLE WITH LIGHT		UNDERGROUND GAS LINE
	GUY WIRE		UNDERGROUND CABLE TV LINE
	TRAFFIC LIGHT		UNDERGROUND FIBER OPTIC LINE
	TELEPHONE RISER		EXISTING GROUND CONTOUR
	STREET SIGN		NEW GROUND CONTOUR
	MAILBOX		DRAINAGE COURSE OR FLOW LINE
	SECTION CORNER		CURB INLET
	CONTROL POINT, TBM		GRATE INLET
	PROPERTY PIN		MANHOLE
	CULVERT		CLEANOUT
	RAILROAD TRACKS		MONITOR WELL LOCATION
	BASE LINE		
	FENCE		

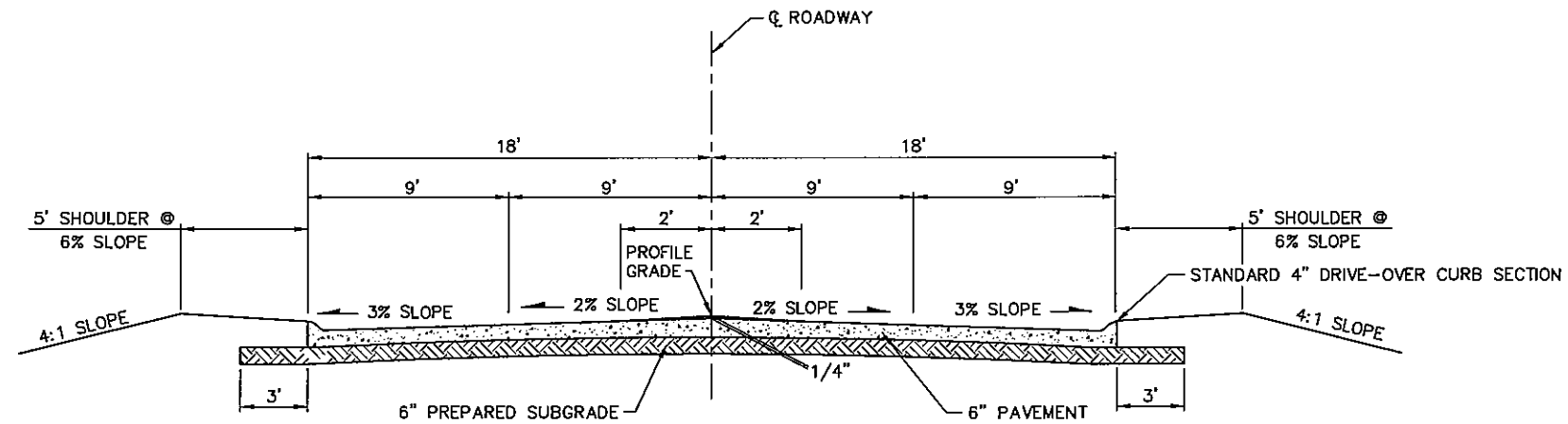
NOTES:

- CONTRACTOR IS TO COORDINATE ALL STREET CLOSINGS WITH THE CITY OF LEXINGTON. NOTIFY FIRE/RESCUE DEPARTMENT, AND ALL ADJOINING PROPERTY OWNERS 72 HOURS PRIOR TO CLOSING STREETS OR DRIVES, OR AS NOTED IN THE SPECIFICATIONS.
- THE LOCATION OF ALL AERIAL AND UNDERGROUND UTILITY FACILITIES MAY NOT BE INDICATED IN THESE DRAWINGS. UNDERGROUND UTILITIES, WHETHER INDICATED OR NOT, WILL BE LOCATED AND FLAGGED BY THE UTILITIES AT THE REQUEST OF THE CONTRACTOR.
- NO EXCAVATION WILL BE PERMITTED IN THE AREA OF UNDERGROUND UTILITY FACILITIES UNTIL ALL SUCH FACILITIES HAVE BEEN LOCATED AND IDENTIFIED TO THE SATISFACTION OF ALL PARTIES AND THEN ONLY WITH EXTREME CARE TO AVOID ANY POSSIBILITY OF DAMAGE TO THE UTILITY FACILITY.
- ALL SIGNS, MAILBOXES, CULVERTS, GUYWIRES, FENCES, AND PROPERTY PINS ENCOUNTERED DURING THE CONTRACTOR'S OPERATIONS SHALL BE RESTORED TO ORIGINAL CONDITION AT THE CONTRACTOR'S EXPENSE.
- THE QUANTITIES OF EACH ITEM LISTED ON THE BID SCHEDULE MAY VARY FROM THE TOTAL QUANTITIES. THE CITY MAY ADD OR DELETE FROM THE PROJECT, PORTIONS OF IMPROVEMENTS.
- SAW CUTTING OF PAVEMENT IS REQUIRED FOR REMOVAL AND IS INCIDENTAL TO THE PROJECT. ADDITIONAL SAW CUTTING BEYOND THAT WHICH IS INDICATED ON THE DRAWINGS MAY BE REQUIRED.
- TOPSOIL SHALL BE REMOVED, STOCKPILED AND REPLACED FOR ALL EXCAVATION AREAS.
- CONTRACTOR SHALL GUARD AND PROTECT ALL TREES, SHRUBS, FENCES, AND OTHER ITEMS NOT SPECIFICALLY MARKED FOR REMOVAL.
- THE CONTRACTOR MAY CLOSE THE ROAD TO ALL BUT LOCAL TRAFFIC SUBJECT TO THE CONDITIONS PRESCRIBED IN THE STANDARD SPECIFICATIONS.
- THE CONTRACTOR SHALL FIND A SUITABLE LOCATION BEYOND THE LIMITS OF THE RIGHT-OF-WAY TO DISPOSE OF EXCESS MATERIAL.

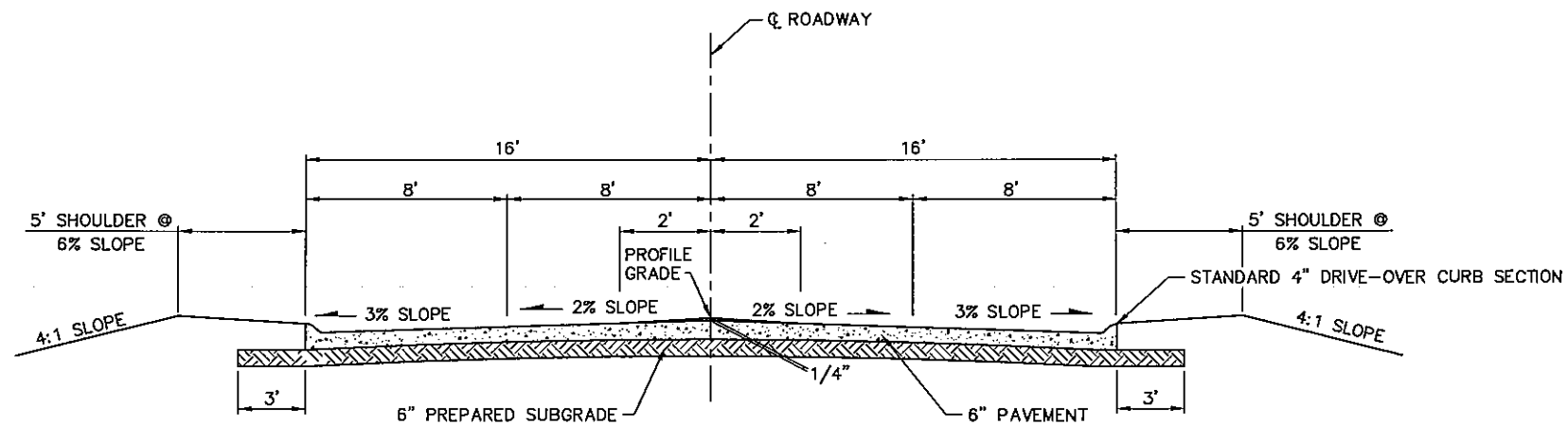


LEXINGTON, NEBRASKA

5/29/2013 2:45 PM
 SWED: 5/29/2013 2:45 PM
 C:\Projects\127127-A1-100\Drawings\Sheet\Drawings\127127-A1-100.dwg



36' TANGENT SLAB PAVEMENT
NO SCALE



32' TANGENT SLAB PAVEMENT
NO SCALE

REVISIONS	BY

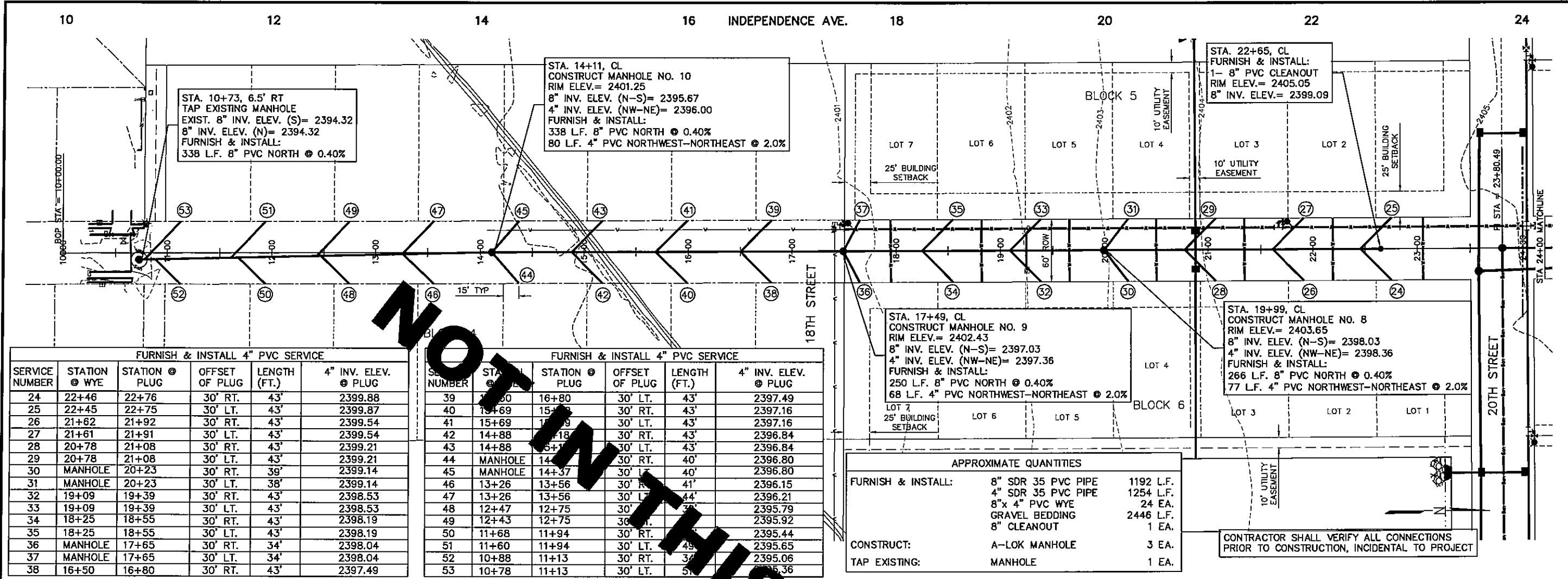
M&A
 Miller & Associates
 Consulting Engineers, P.C.
 Kearney, NE (308) 234-6456
 McCook, NE (308) 345-3710

NORTHWEST 3RD ADDITION PHASE 2 IMPROVEMENTS
TYPICAL CROSS SECTION
 LEXINGTON, NEBRASKA

**PRELIMINARY
FOR REVIEW**

VERIFY SCALES	
BAR IS ONE INCH ON ORIGINAL DRAWING	
IF NOT ONE INCH ON THIS SHEET, ADJUST SCALES ACCORDINGLY.	
SCALE:	NO SCALE
PROJECT NO.	127-A1-100-14
DATE:	MAY, 2014
FIELD BOOK	M&A DWG NO.
DRAWN BY:	APRVD BY:
LMS	
SHEET	G-3

This document and the ideas and designs incorporated herein, are an instrument of professional service, in the property of Miller & Associates and not to be used in whole or in part, for any other project without the written authorization of Miller & Associates.

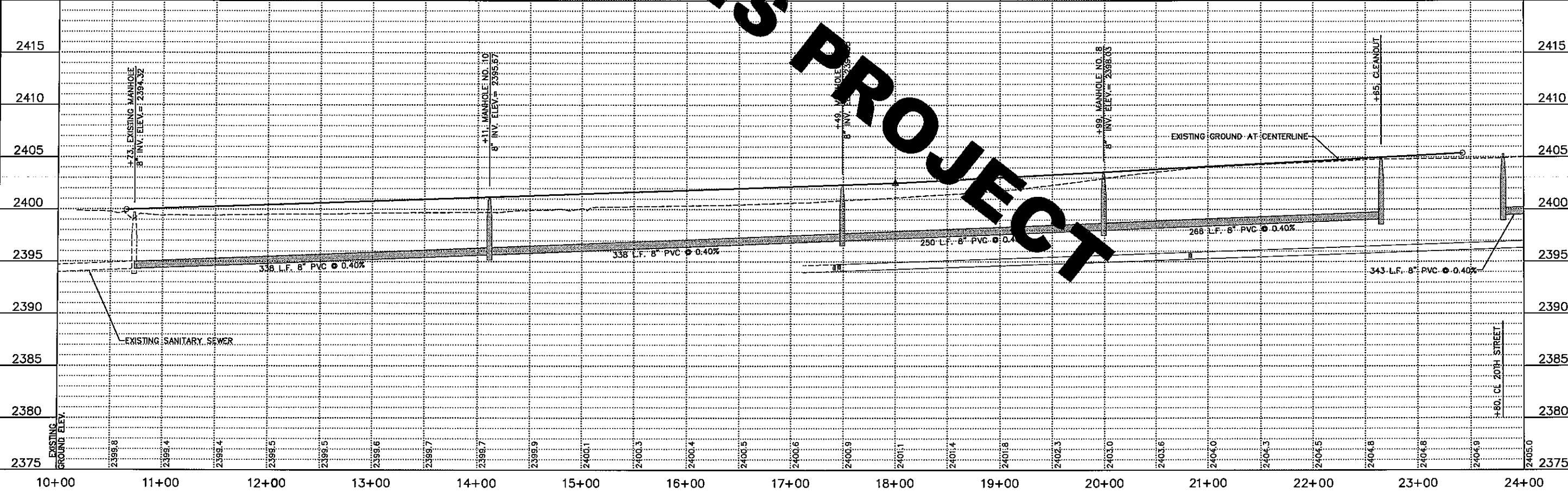


FURNISH & INSTALL 4" PVC SERVICE					
SERVICE NUMBER	STATION @ WYE	STATION @ PLUG	OFFSET OF PLUG	LENGTH (FT.)	4" INV. ELEV. @ PLUG
24	22+46	22+76	30' RT.	43'	2399.88
25	22+45	22+75	30' LT.	43'	2399.87
26	21+62	21+92	30' RT.	43'	2399.54
27	21+61	21+91	30' LT.	43'	2399.54
28	20+78	21+08	30' RT.	43'	2399.21
29	20+78	21+08	30' LT.	43'	2399.21
30	MANHOLE	20+23	30' RT.	39'	2399.14
31	MANHOLE	20+23	30' LT.	38'	2399.14
32	19+09	19+39	30' RT.	43'	2398.53
33	19+09	19+39	30' LT.	43'	2398.53
34	18+25	18+55	30' RT.	43'	2398.19
35	18+25	18+55	30' LT.	43'	2398.19
36	MANHOLE	17+65	30' RT.	34'	2398.04
37	MANHOLE	17+65	30' LT.	34'	2398.04
38	16+50	16+80	30' RT.	43'	2397.49

FURNISH & INSTALL 4" PVC SERVICE					
SERVICE NUMBER	STATION @ WYE	STATION @ PLUG	OFFSET OF PLUG	LENGTH (FT.)	4" INV. ELEV. @ PLUG
39	15+50	16+80	30' LT.	43'	2397.49
40	15+69	16+99	30' RT.	43'	2397.16
41	15+69	16+99	30' LT.	43'	2397.16
42	14+88	15+18	30' RT.	43'	2396.84
43	14+88	15+18	30' LT.	43'	2396.84
44	MANHOLE	14+37	30' RT.	40'	2396.80
45	MANHOLE	14+37	30' LT.	40'	2396.80
46	13+26	13+56	30' RT.	41'	2396.15
47	13+26	13+56	30' LT.	44'	2396.21
48	12+47	12+75	30' RT.	38'	2395.79
49	12+43	12+75	30' LT.	36'	2395.92
50	11+68	11+94	30' RT.	26'	2395.44
51	11+60	11+94	30' LT.	49'	2395.65
52	10+88	11+13	30' RT.	34'	2395.06
53	10+78	11+13	30' LT.	51'	2395.36

APPROXIMATE QUANTITIES		
FURNISH & INSTALL:	8" SDR 35 PVC PIPE	1192 L.F.
	4" SDR 35 PVC PIPE	1254 L.F.
	8"x 4" PVC WYE	24 EA.
	GRAVEL BEDDING	2446 L.F.
	8" CLEANOUT	1 EA.
CONSTRUCT:	A-LOK MANHOLE	3 EA.
TAP EXISTING:	MANHOLE	1 EA.

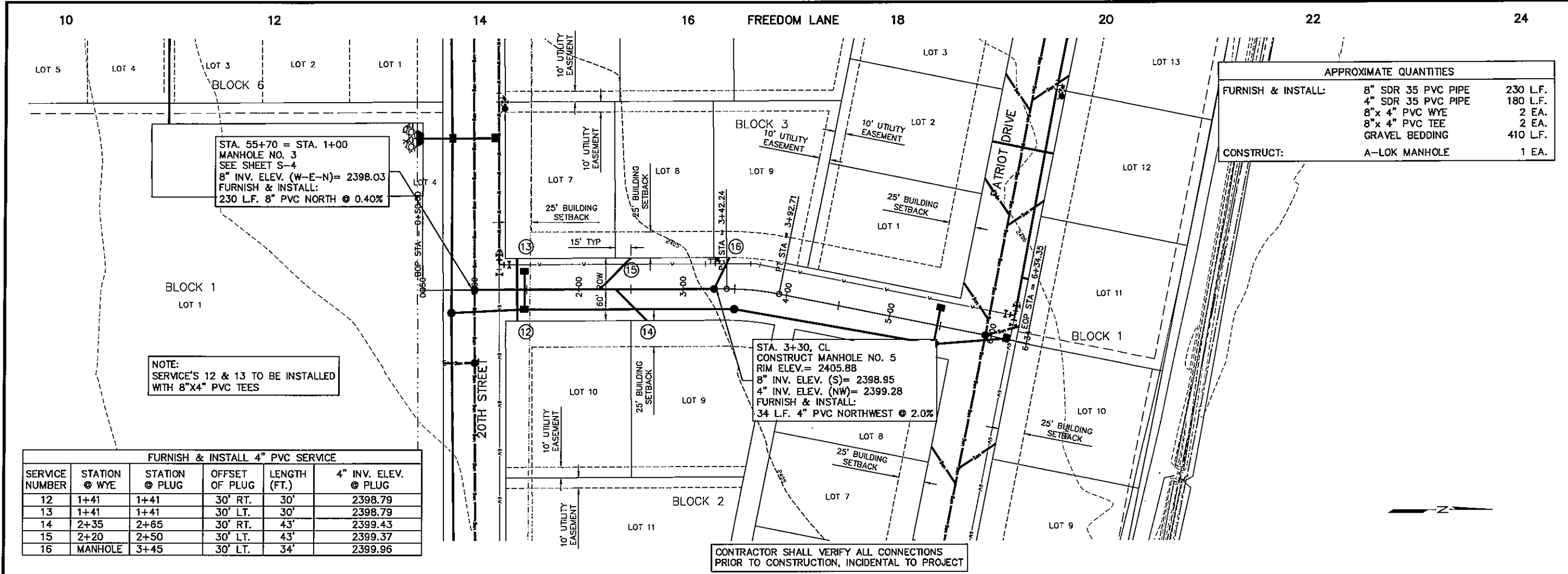
CONTRACTOR SHALL VERIFY ALL CONNECTIONS PRIOR TO CONSTRUCTION, INCIDENTAL TO PROJECT



REVISIONS	BY
Miller & Associates Consulting Engineers, P.C. Kearney, NE (308) 234-6456 McCook, NE (308) 345-3710	
NORTHWEST 3RD ADDITION PHASE 2 IMPROVEMENTS INDEPENDENCE AVE. SANITARY SEWER - PLAN & PROFILE LEXINGTON, NEBRASKA	
PRELIMINARY FOR REVIEW	
VERIFY SCALES BAR IS ONE INCH ON ORIGINAL DRAWING IF NOT ONE INCH ON THIS SHEET, ADJUST SCALES ACCORDINGLY. SCALE: 1"=5' VERT 1"=50' HORIZ PROJECT NO. 127-AI-100 DATE: MAY, 2015 FIELD BOOK M&A DWG NO. DRAWN BY: LUS APRVD BY: LUS SHEET 9	

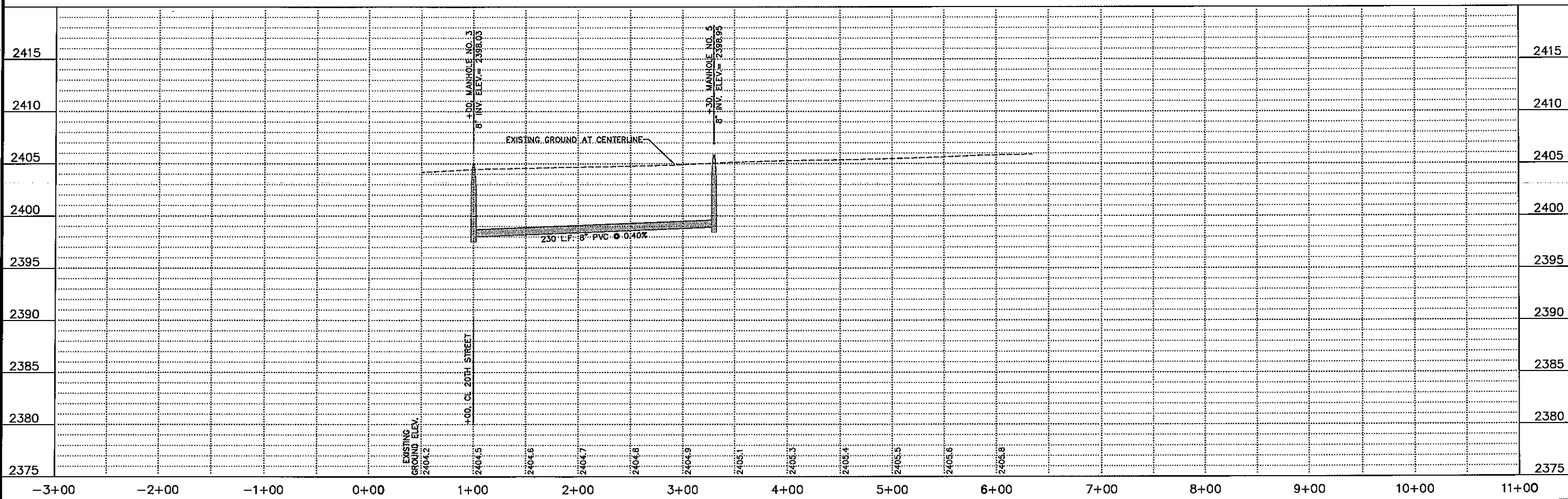
NOT FOR THIS PROJECT

PLOTTED 5/20/2015 3:10 PM
 SAVED 5/20/2015 3:35 AM
 C:\Projects\127-AI-100\Drawings\Sheet\DWG\127-AI-100-09.dwg



APPROXIMATE QUANTITIES			
FURNISH & INSTALL:	8" SDR 35 PVC PIPE	230 L.F.	
	4" SDR 35 PVC PIPE	180 L.F.	
	8"x4" PVC WYE	2 EA.	
	8"x4" PVC TEE	2 EA.	
	GRAVEL BEDDING	410 L.F.	
CONSTRUCT:	A-LOK MANHOLE	1 EA.	

FURNISH & INSTALL 4" PVC SERVICE					
SERVICE NUMBER	STATION @ WYE	STATION @ PLUG	OFFSET OF PLUG	LENGTH (FT.)	4" INV. ELEV. @ PLUG
12	1+41	1+41	30' RT.	30'	2398.79
13	1+41	1+41	30' LT.	30'	2398.79
14	2+35	2+65	30' RT.	43'	2399.43
15	2+20	2+50	30' LT.	43'	2399.37
16	MANHOLE	3+45	30' LT.	34'	2399.96



REVISIONS BY

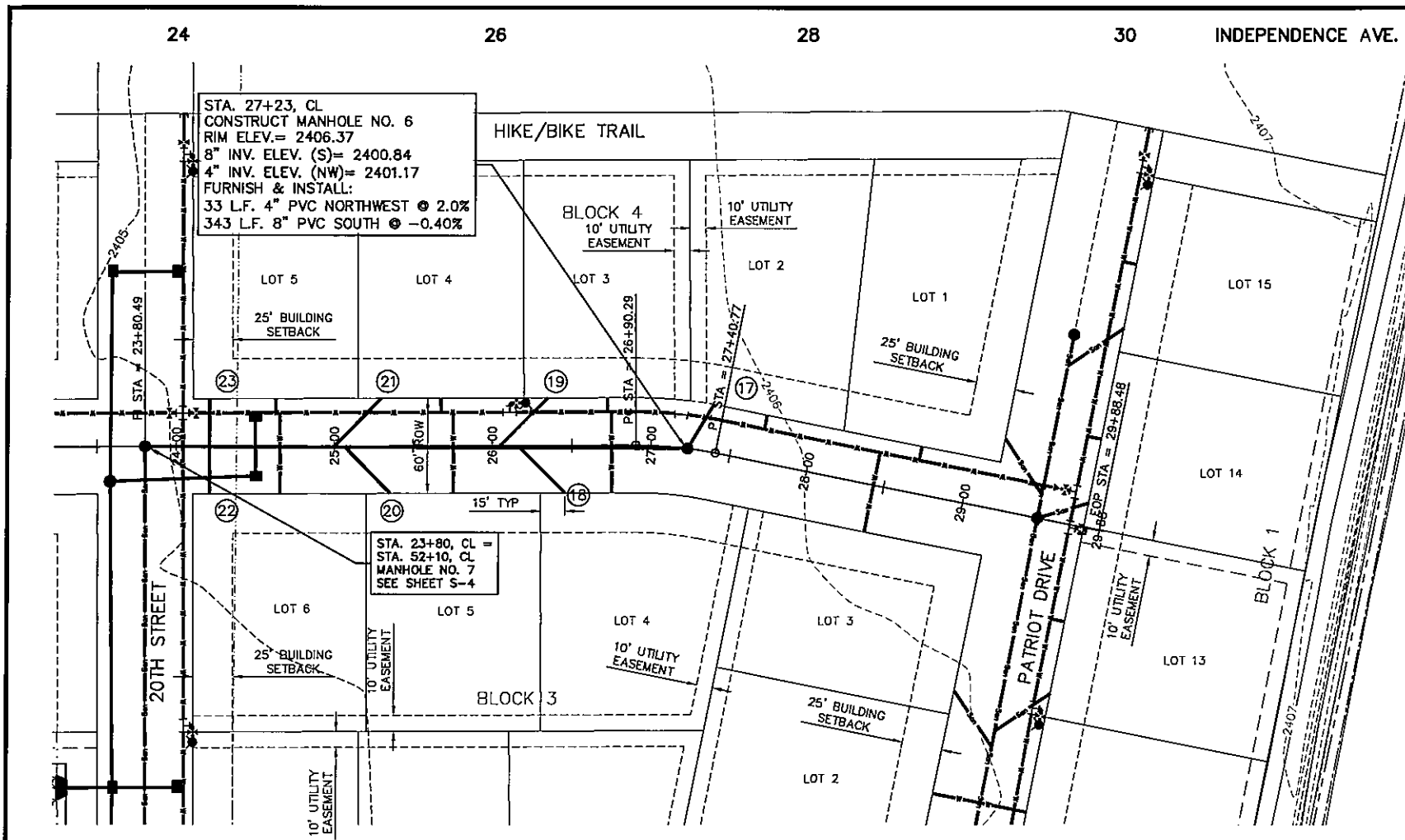
M&A
Miller & Associates
Consulting Engineers, P.C.
Kearney, NE (308) 234-6456
McCook, NE (308) 345-3710

NORTHWEST 3RD ADDITION PHASE 2 IMPROVEMENTS
FREEDOM LANE SANITARY SEWER - PLAN & PROFILE
LEXINGTON, NEBRASKA

PRELIMINARY FOR REVIEW

VERIFY SCALES
BAR IS ONE INCH ON ORIGINAL DRAWING
IF NOT ONE INCH ON THIS SHEET, ADJUST SCALES ACCORDINGLY.
SCALE: 1"=5' VERT
1"=50' HORZ
PROJECT NO. 127-AI-100
DATE: MAY 2015
FIELD BOOK M&A DWG NO.
DRAWN BY: LMS
APRVD BY: [Signature]
SHEET S-1

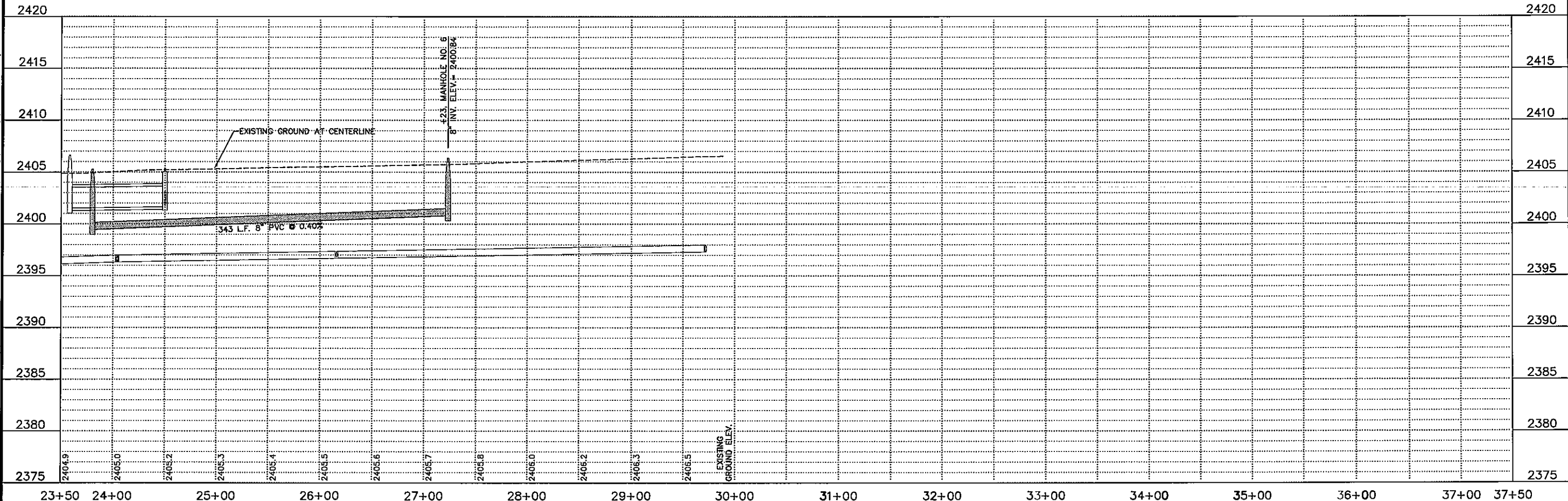
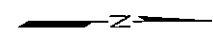
PLOTTED: 5/20/2015 3:11 PM
 SAVED: 5/20/2015 3:36 AM
 C:\Projects\127-AI-100\Out-Draw\Sheet Drawings\DWG_S&M_S&M_P&P.dwg



FURNISH & INSTALL 4" PVC SERVICE					
SERVICE NUMBER	STATION @ WYE	STATION @ PLUG	OFFSET OF PLUG	LENGTH (FT.)	4" INV. ELEV. @ PLUG
17	MANHOLE	27+35	30' LT.	33'	2401.83
18	26+17	26+50	30' RT.	40'	2401.30
19	26+03	26+35	30' LT.	45'	2401.34
20	25+07	25+36	30' RT.	41'	2400.88
21	24+99	25+30	30' LT.	44'	2400.91
22	24+21	24+21	30' RT.	30'	2400.32
23	24+21	24+21	30' LT.	30'	2400.32

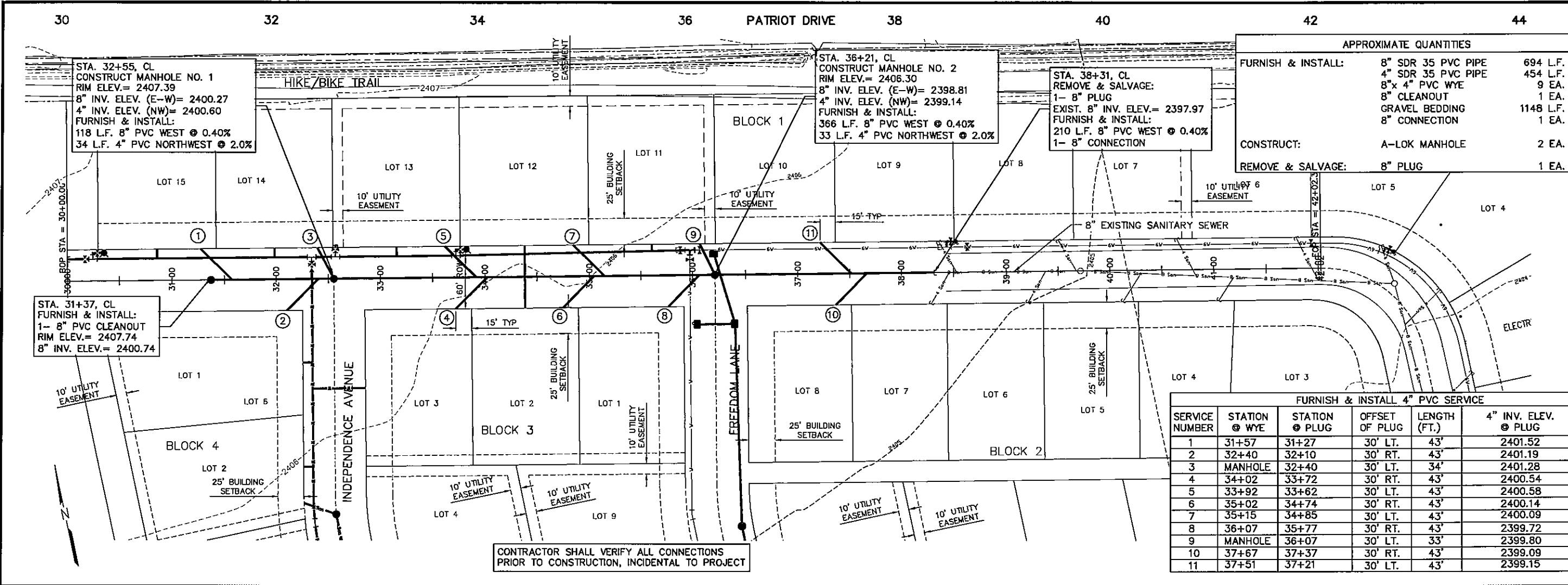
APPROXIMATE QUANTITIES		
FURNISH & INSTALL:	8" SDR 35 PVC PIPE	343 L.F.
	4" SDR 35 PVC PIPE	263 L.F.
	8" x 4" PVC WYE	4 EA.
	8" x 4" PVC TEE	2 EA.
	GRAVEL BEDDING	606 L.F.
CONSTRUCT:	A-LOK MANHOLE	1 EA.

NOTE:
SERVICE'S 22 & 23 TO BE INSTALLED WITH 8"X4" PVC TEES



REVISIONS	BY
Miller & Associates Consulting Engineers, P.C. Kearney, NE (308) 234-6456 McCook, NE (308) 345-3710	
NORTHWEST 3RD ADDITION PHASE 2 IMPROVEMENTS INDEPENDENCE AVE. SANITARY SEWER - PLAN & PROFILE LEXINGTON, NEBRASKA	
PRELIMINARY FOR REVIEW	
VERIFY SCALES BAR IS ONE INCH ON ORIGINAL DRAWING IF NOT ONE INCH ON THIS SHEET, ADJUST SCALES ACCORDINGLY. SCALE: 1"=5' VERT 1"=50' HORIZ PROJECT NO. 127-AI-100 DATE: MAY, 2015 FIELD BOOK M&A DWG NO. DRAWN BY: LMS APRVD BY:	
SHEET S-2	

PLOTTED: 5/20/2015 3:11 PM
 SAVED: 5/20/2015 3:35 AM
 © ProjectW (VT) 127-AI-100 (308) 234-6456 Sheet Drawing VLSM_SDRW_PBP.dwg



FURNISH & INSTALL 4" PVC SERVICE					
SERVICE NUMBER	STATION @ WYE	STATION @ PLUG	OFFSET OF PLUG	LENGTH (FT.)	4" INV. ELEV. @ PLUG
1	31+57	31+27	30' LT.	43'	2401.52
2	32+40	32+10	30' RT.	43'	2401.19
3	MANHOLE	32+40	30' LT.	34'	2401.28
4	34+02	33+72	30' RT.	43'	2400.54
5	33+92	33+62	30' LT.	43'	2400.58
6	35+02	34+74	30' RT.	43'	2400.14
7	35+15	34+85	30' LT.	43'	2400.09
8	36+07	35+77	30' RT.	43'	2399.72
9	MANHOLE	36+07	30' LT.	33'	2399.80
10	37+67	37+37	30' RT.	43'	2399.09
11	37+51	37+21	30' LT.	43'	2399.15



REVISIONS BY

M&A
Miller & Associates
Consulting Engineers, P.C.
Kearney, NE (308) 234-6465
McCook, NE (308) 345-3710

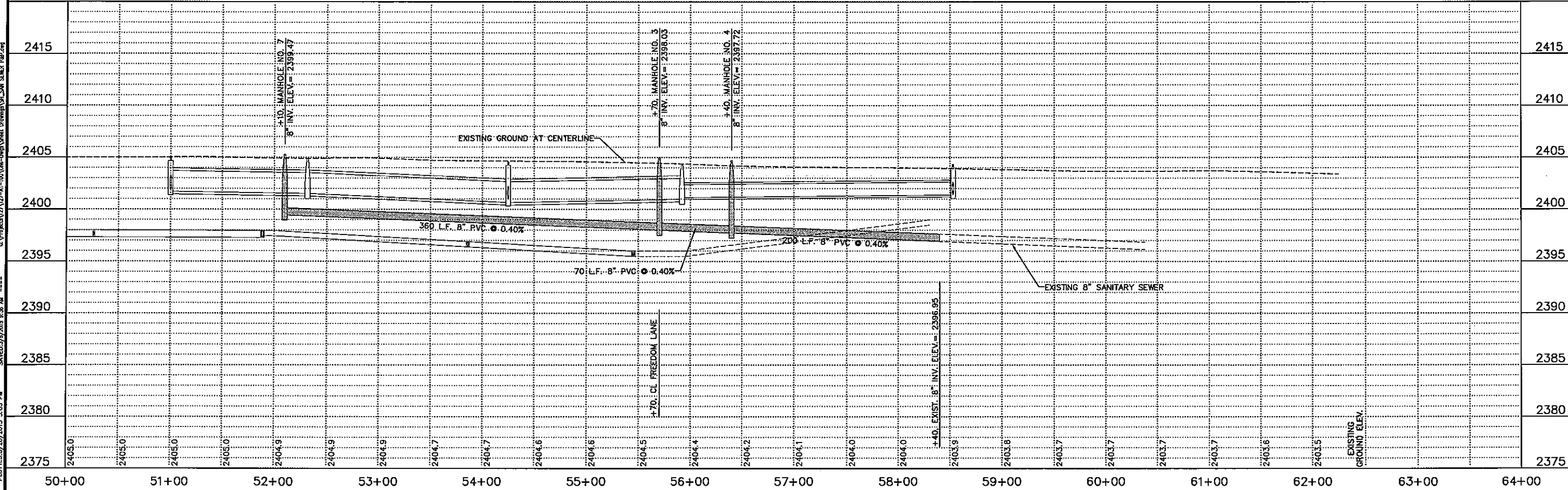
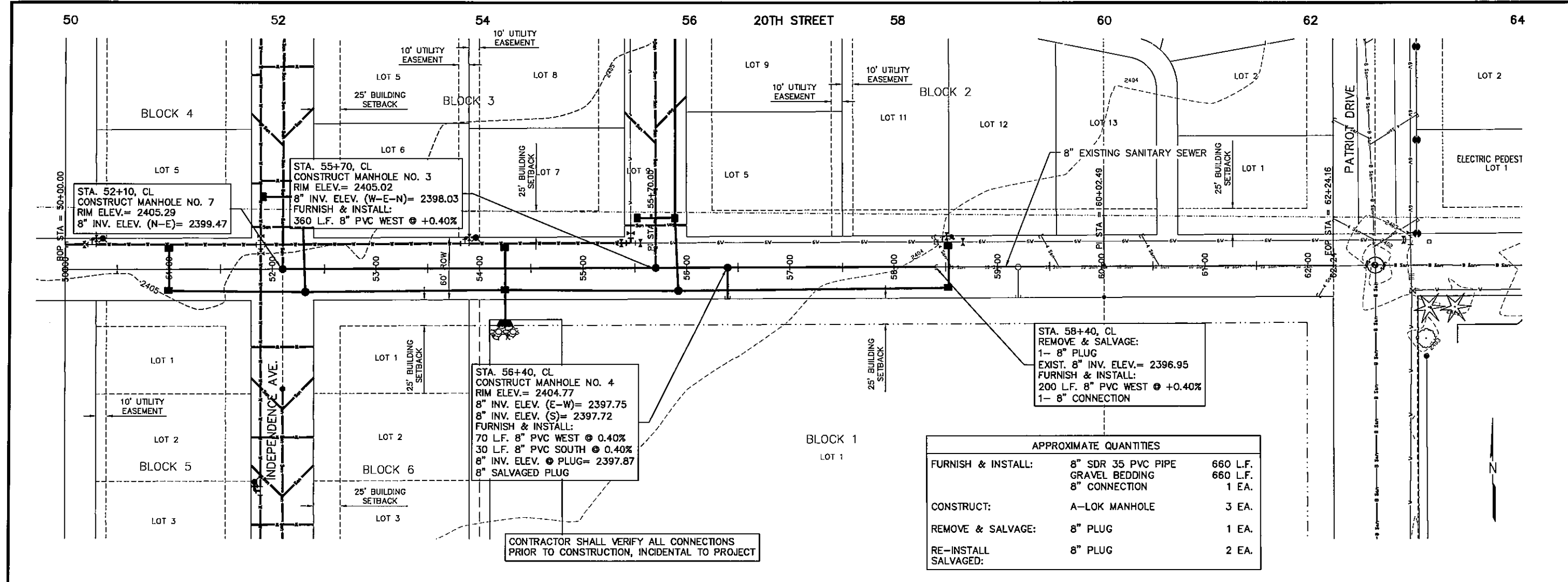
NORTHWEST 3RD ADDITION PHASE 2 IMPROVEMENTS
PATRIOT DRIVE SANITARY SEWER - PLAN & PROFILE
LEXINGTON, NEBRASKA

PRELIMINARY FOR REVIEW

VERIFY SCALES
BAR IS ONE INCH ON ORIGINAL DRAWING
IF NOT ONE INCH ON THIS SHEET, ADJUST SCALES ACCORDINGLY.

SCALE:
PROJECT NO. 127-AI-100
DATE: MAY, 2015
FIELD BOOK: W&A DWG NO.
DRAWN BY: LMS
APRVD BY:
SHEET 8-3

PLOTTED: 5/20/2015 3:11 PM
 SAVED: 5/20/2015 3:28 AM
 C:\projects\127-AI-100\DWG\Sheet_Dwg\Sheet_Dwg.dwg
 User: LMS
 Printer: RPL



REVISIONS BY

M&A
Miller & Associates
Consulting Engineers, P.C.
Kearney, NE (308) 224-6456
McCook, NE (308) 345-3710

NORTHWEST 3RD ADDITION PHASE 2 IMPROVEMENTS
20TH STREET SANITARY SEWER- PLAN & PROFILE
LEXINGTON, NEBRASKA

PRELIMINARY FOR REVIEW

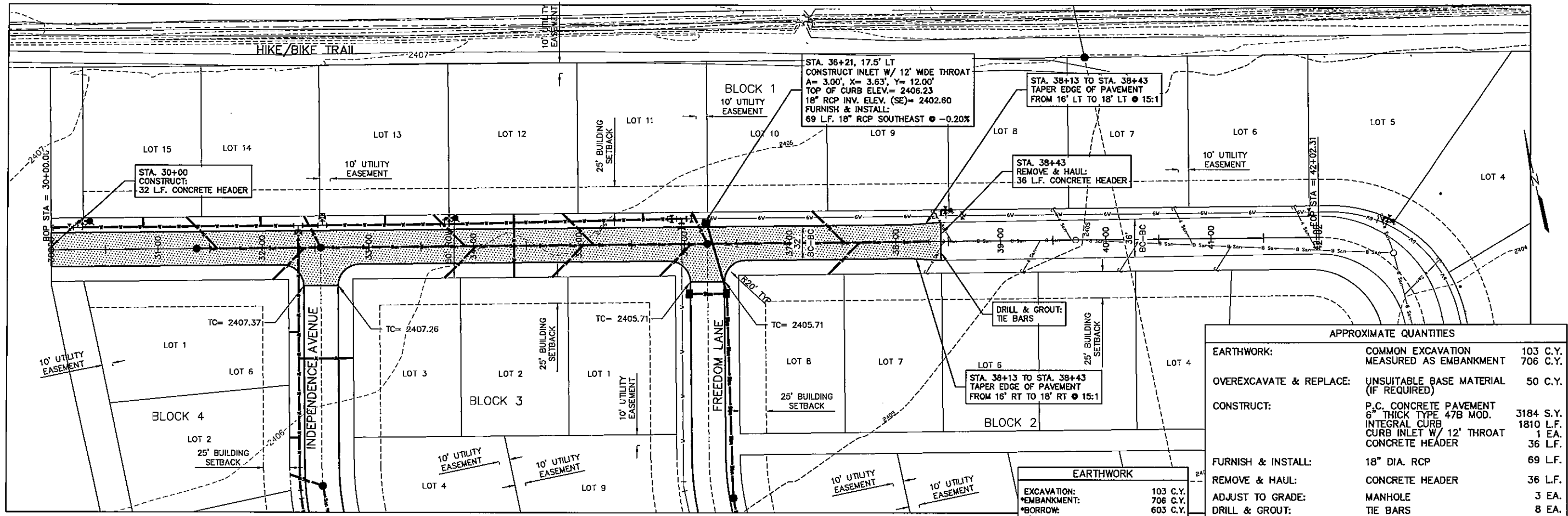
VERIFY SCALES
BAR IS ONE INCH ON ORIGINAL DRAWING
IF NOT ONE INCH ON THIS SHEET, ADJUST SCALES ACCORDINGLY.
SCALE: 1"=5' VERT
1"=50' HORZ
PROJECT NO. 127-AI-100
DATE: MAY, 2015
FIELD BOOK: M&A DWG NO.
DRAWN BY: LMS
APRVD BY: [Signature]
SHEET 3-4

PLOTTED: 5/20/2015 3:03 PM
 SAVED: 5/20/2015 8:38 AM
 C:\Projects\127-AI-100\Drawings\Sheet\20th Street Sanitary Sewer.dwg



Miller & Associates
Consulting Engineers, P.C.
Kearney, NE (308) 234-6456
McCook, NE (308) 345-3710

NORTHWEST 3RD ADDITION PART III
PATRIOT DRIVE PAVING - PLAN & PROFILE
LEXINGTON, NEBRASKA



STA. 36+21, 17.5' LT
CONSTRUCT INLET W/ 12' WIDE THROAT
A= 3.00', X= 3.63', Y= 12.00'
TOP OF CURB ELEV.= 2406.23
18" RCP INV. ELEV. (SE)= 2402.60
FURNISH & INSTALL:
69' L.F. 18" RCP SOUTHEAST @ -0.20%

STA. 38+13 TO STA. 38+43
TAPER EDGE OF PAVEMENT
FROM 16' LT TO 18' LT @ 15:1

STA. 30+00
CONSTRUCT:
32 L.F. CONCRETE HEADER

STA. 38+43
REMOVE & HAUL:
36 L.F. CONCRETE HEADER

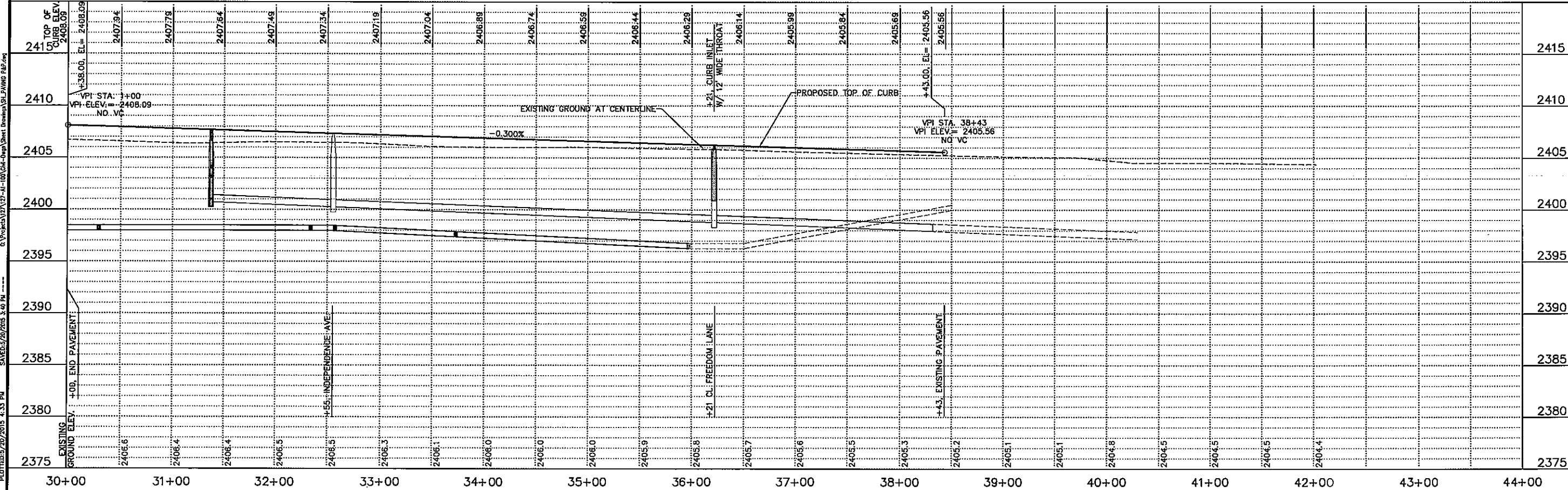
DRILL & GROUT:
TIE BARS

STA. 38+13 TO STA. 38+43
TAPER EDGE OF PAVEMENT
FROM 16' RT TO 18' RT @ 15:1

APPROXIMATE QUANTITIES	
EARTHWORK:	COMMON EXCAVATION 103 C.Y. MEASURED AS EMBANKMENT 706 C.Y.
OVEREXCAVATE & REPLACE:	UNSUITABLE BASE MATERIAL (IF REQUIRED) 50 C.Y.
CONSTRUCT:	P.C. CONCRETE PAVEMENT 3184 S.Y. 6" THICK TYPE 47B MOD. INTEGRAL CURB 1810 L.F. CURB INLET W/ 12' THROAT 1 EA. CONCRETE HEADER 36 L.F.
FURNISH & INSTALL:	18" DIA. RCP 69 L.F.
REMOVE & HAUL:	CONCRETE HEADER 36 L.F.
ADJUST TO GRADE:	MANHOLE 3 EA.
DRILL & GROUT:	TIE BARS 8 EA.
FURNISH & APPLY:	TYPE "B" SEEDING W/ MULCH & FERTILIZER 0.5D Ac.

EARTHWORK	
EXCAVATION:	103 C.Y.
EMBANKMENT:	706 C.Y.
BORROW:	603 C.Y.
WASTE:	0 C.Y.

*THE ABOVE FIGURES COMPUTED WITHOUT ANY COMPACTION FACTOR



PRELIMINARY FOR REVIEW

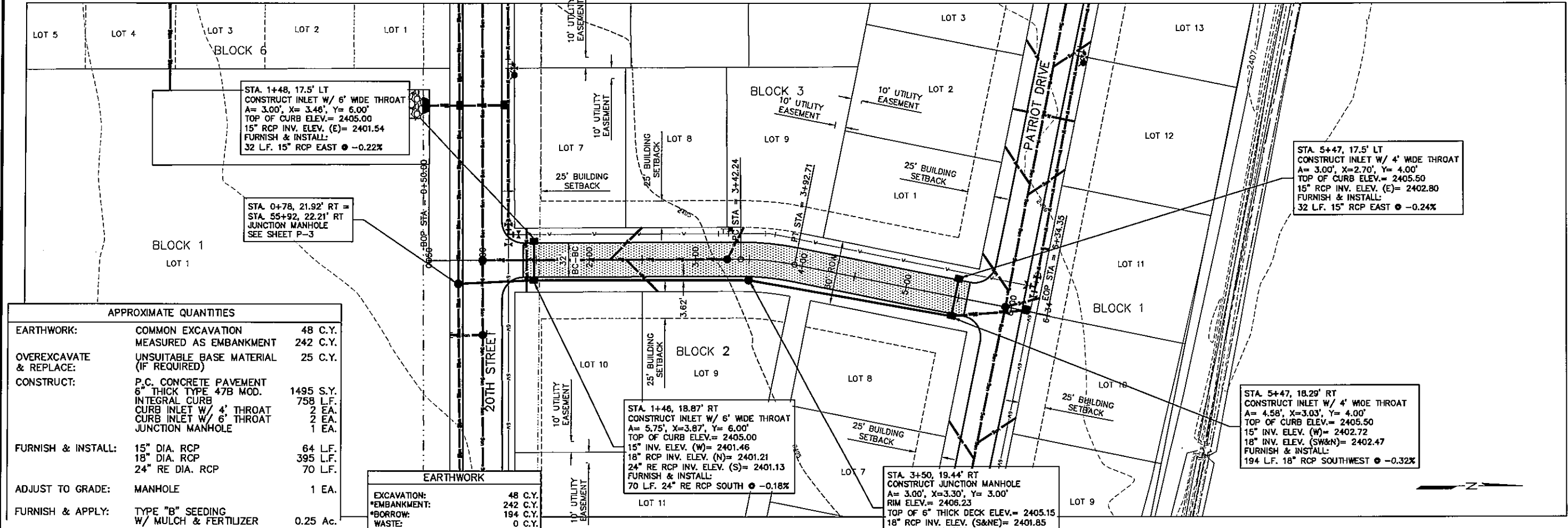
VERIFY SCALES
BAR IS ONE INCH ON ORIGINAL DRAWING @ 1"
IF NOT ONE INCH ON THIS SHEET, ADJUST SCALES ACCORDINGLY.
SCALE:
PROJECT NO. 127-AI-100
DATE: MAY, 2015
FIELD BOOK M&A DWG NO.
DRAWN BY: LMS
APR'D BY:
SHEET P-1

PLOTTED 5/20/2015 4:33 PM
S:\NEDE\2015\127-AI-100\04-Dwg-Drawn\Sheet Drawings\SI-Paving P&P.dwg

NORTHWEST 3RD ADDITION PART III
FREEDOM LANE PAVING - PLAN & PROFILE
 LEXINGTON, NEBRASKA

PRELIMINARY FOR REVIEW

VERIFY SCALES
 BAR IS ONE INCH ON ORIGINAL DRAWING
 IF NOT ONE INCH ON THIS SHEET, ADJUST SCALES ACCORDINGLY.
 SCALE: 1"=5' VERT
 1"=50' HORIZ
 PROJECT NO. 127-AI-100
 DATE: MAY, 2015
 FIELD BOOK M&A DWG NO.
 DRAWN BY: LMS
 APRVD BY: LMS
 SHEET **P-2**



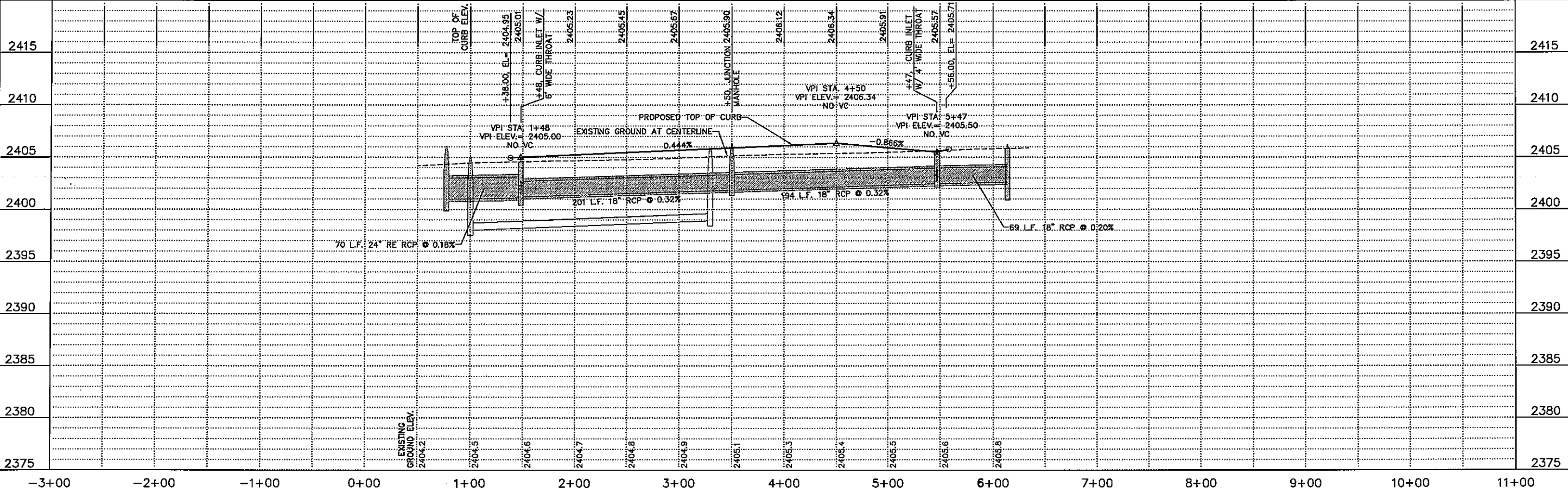
APPROXIMATE QUANTITIES

EARTHWORK:	COMMON EXCAVATION	48 C.Y.
	MEASURED AS EMBANKMENT	242 C.Y.
OVEREXCAVATE & REPLACE:	UNSUITABLE BASE MATERIAL (IF REQUIRED)	25 C.Y.
CONSTRUCT:	P.C. CONCRETE PAVEMENT	1495 S.Y.
	6" THICK TYPE 47B MOD.	758 L.F.
	INTEGRAL CURB	2 EA.
	CURB INLET W/ 4" THROAT	2 EA.
	CURB INLET W/ 6" THROAT	1 EA.
FURNISH & INSTALL:	15" DIA. RCP	64 L.F.
	18" DIA. RCP	395 L.F.
	24" RE DIA. RCP	70 L.F.
ADJUST TO GRADE:	MANHOLE	1 EA.
FURNISH & APPLY:	TYPE "B" SEEDING W/ MULCH & FERTILIZER	0.25 Ac.

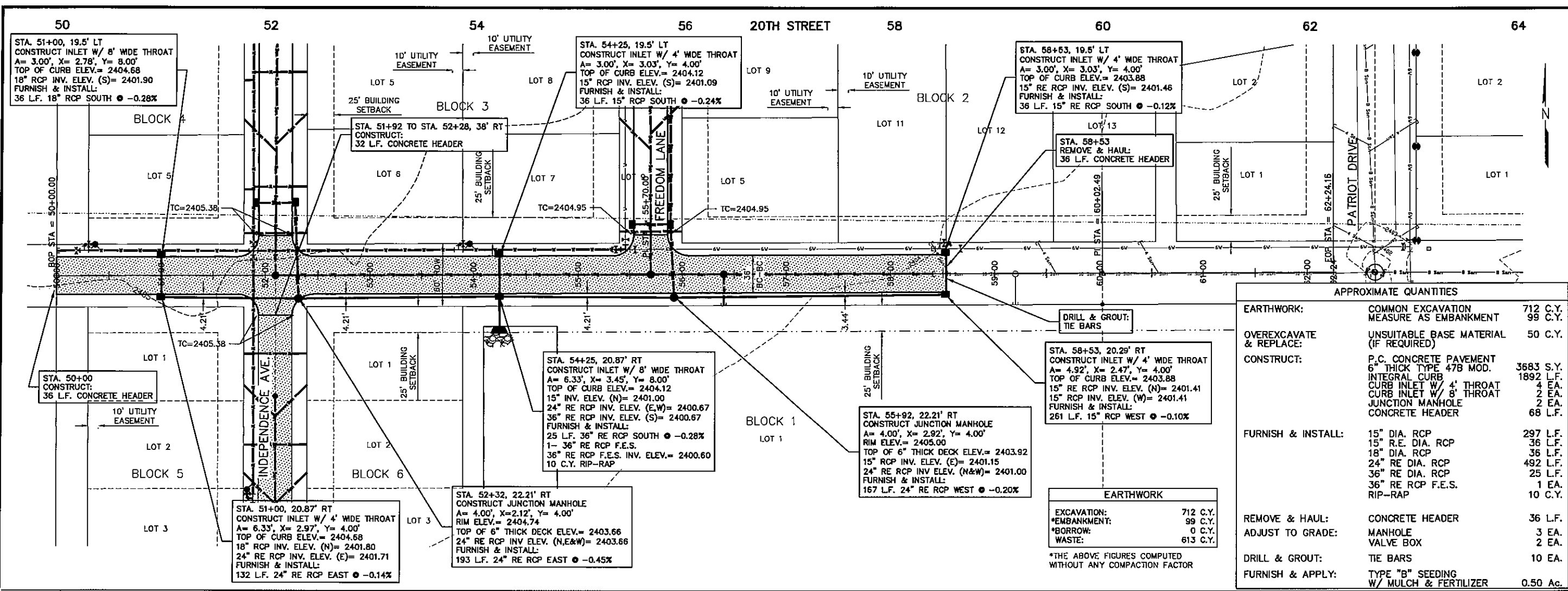
EARTHWORK

EXCAVATION:	48 C.Y.
*EMBANKMENT:	242 C.Y.
*BORROW:	194 C.Y.
WASTE:	0 C.Y.

*THE ABOVE FIGURES COMPUTED WITHOUT ANY COMPACTION FACTOR



PLOTTED 5/20/2015 2:48 PM
 SAVED 5/20/2015 2:38 PM
 C:\projects\127-AI-100\Drawings\Sheet\Drawings\127-AI-100-Freedom Lane Paving P&P.dwg



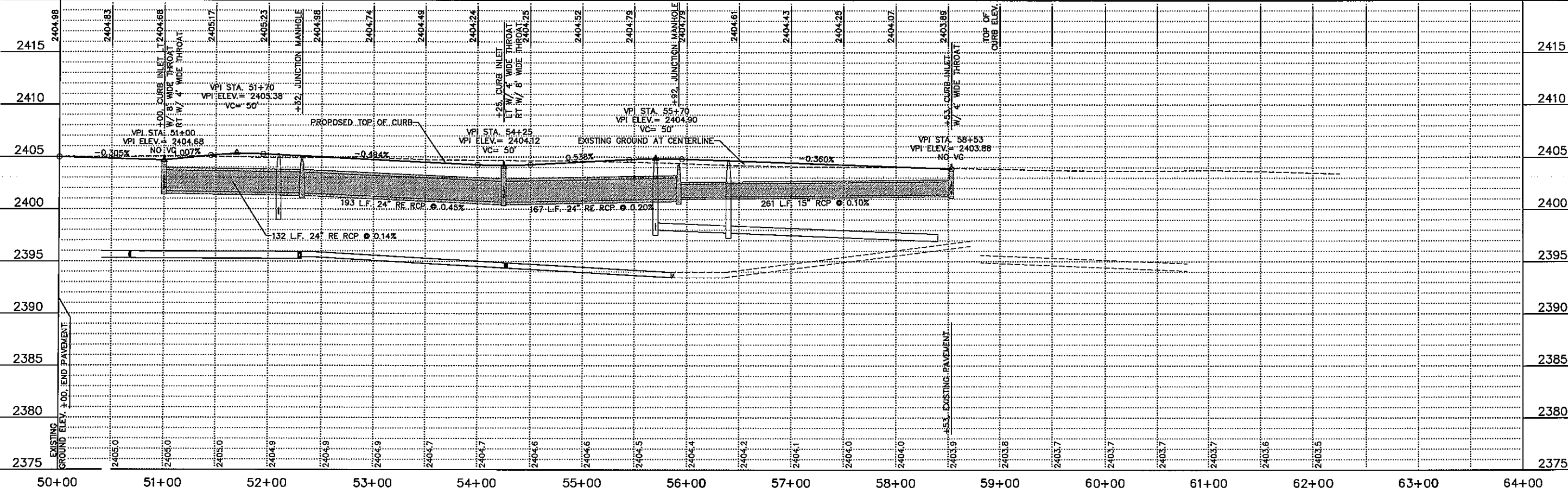
APPROXIMATE QUANTITIES

EARTHWORK:	COMMON EXCAVATION MEASURE AS EMBANKMENT	712 C.Y.
	OVEREXCAVATE & REPLACE:	99 C.Y.
	UNSUITABLE BASE MATERIAL (IF REQUIRED)	50 C.Y.
CONSTRUCT:	P.C. CONCRETE PAVEMENT 6" THICK TYPE 47B MOD.	3683 S.Y.
	INTEGRAL CURB	1892 L.F.
	CURB INLET W/ 4' THROAT	24 EA.
	CURB INLET W/ 8' THROAT	2 EA.
	JUNCTION MANHOLE	2 EA.
	CONCRETE HEADER	68 L.F.
FURNISH & INSTALL:	15" DIA. RCP	297 L.F.
	15" R.E. DIA. RCP	36 L.F.
	18" DIA. RCP	36 L.F.
	24" RE DIA. RCP	492 L.F.
	36" RE DIA. RCP	25 L.F.
	36" RE RCP F.E.S.	1 EA.
	RIP-RAP	10 C.Y.
REMOVE & HAUL:	CONCRETE HEADER	36 L.F.
ADJUST TO GRADE:	MANHOLE	3 EA.
	VALVE BOX	2 EA.
DRILL & GROUT:	TIE BARS	10 EA.
FURNISH & APPLY:	TYPE "B" SEEDING W/ MULCH & FERTILIZER	0.50 Ac.

EARTHWORK

EXCAVATION: 712 C.Y.
 EMBANKMENT: 99 C.Y.
 BORROW: 0 C.Y.
 WASTE: 613 C.Y.

*THE ABOVE FIGURES COMPUTED WITHOUT ANY COMPACTION FACTOR



REVISIONS BY

M&A
 Miller & Associates
 Consulting Engineers, P.C.
 Kearney, NE (308) 234-6456
 McCook, NE (308) 345-3710

NORTHWEST 3RD ADDITION PART III

20TH STREET PAVING- PLAN & PROFILE

LEXINGTON, NEBRASKA

PRELIMINARY FOR REVIEW

VERIFY SCALES

BAR IS ONE INCH ON ORIGINAL DRAWING

IF NOT ONE INCH ON THIS SHEET, ADJUST SCALES ACCORDINGLY.

SCALE: 1"=5' VERT
 1"=50' HORIZ

PROJECT NO. 127-AI-100

DATE: MAY, 2015

FIELD BOOK: M&A DWG NO.

DRAWN BY: APRVD BY:

LMS

SHEET **P-3**

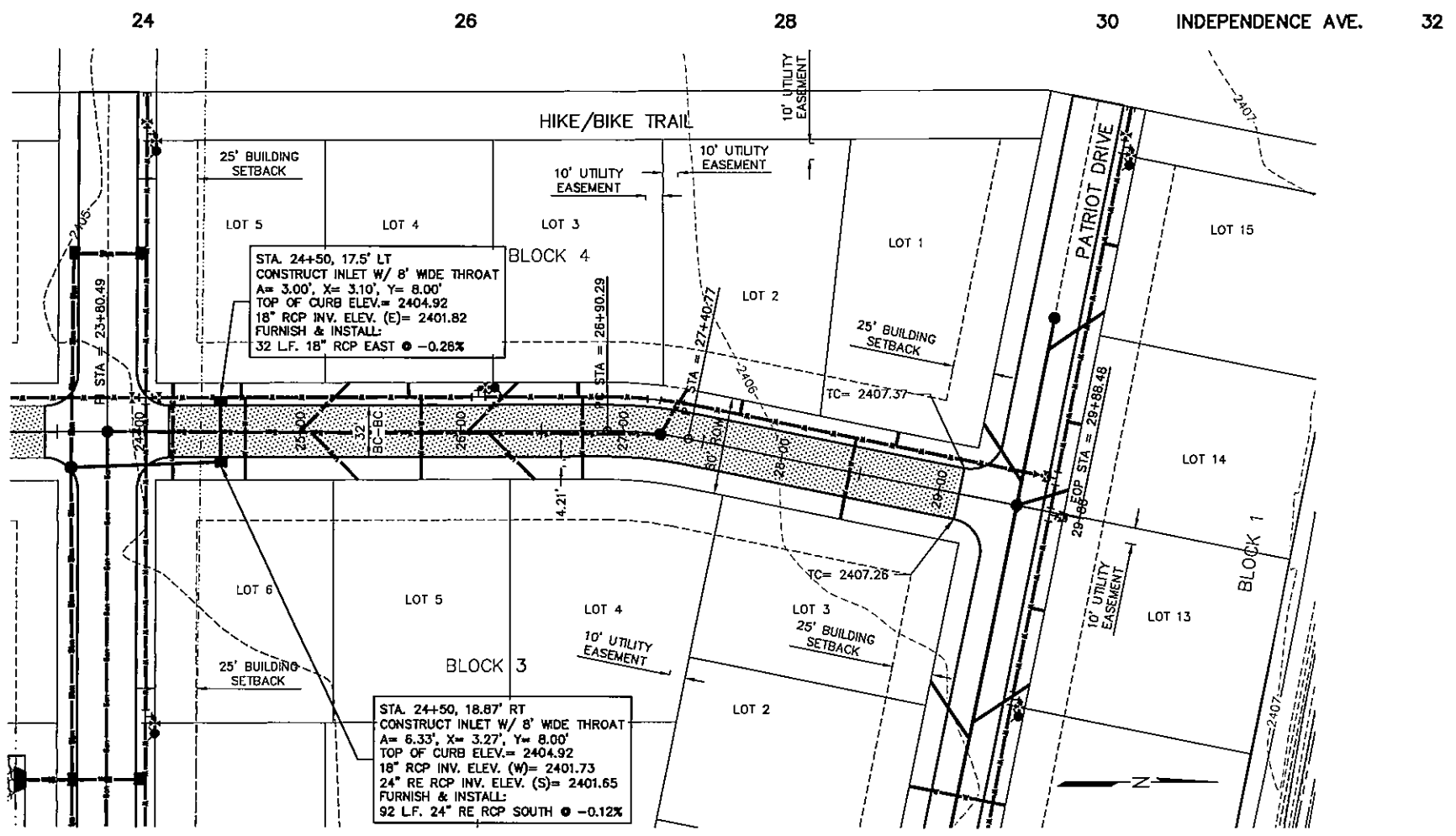


Miller & Associates
Consulting Engineers, P.C.
Kearney, NE (308) 234-6456
McCook, NE (308) 345-3710

NORTHWEST 3RD ADDITION PART III
INDEPENDENCE AVE. PAVING - PLAN & PROFILE
LEXINGTON, NEBRASKA

PRELIMINARY FOR REVIEW

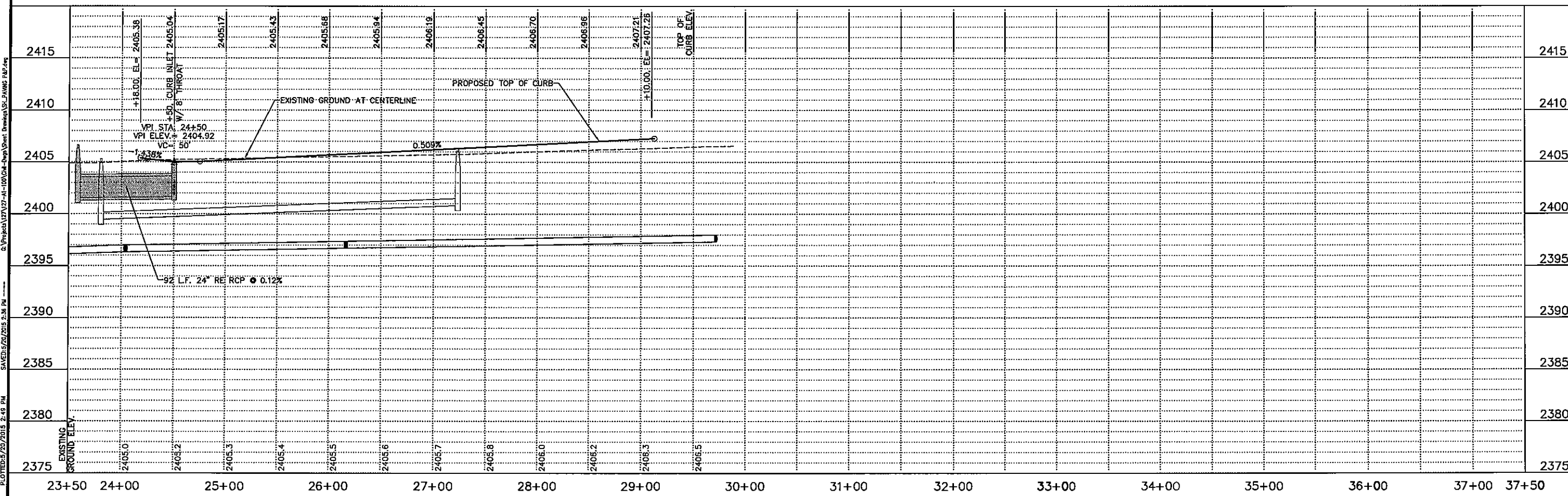
VERIFY SCALES
 BAR IS ONE INCH ON ORIGINAL DRAWING
 IF NOT ONE INCH ON THIS SHEET, ADJUST SCALES ACCORDINGLY.
 SCALE: 1"=5' VERT
 1"=50' HORIZ
 PROJECT NO. 127-AI-100
 DATE: MAY 2015
 FIELD BOOK M&A DWG NO.
 DRAWN BY: LMS
 APRVD BY:
 SHEET **P-4**



APPROXIMATE QUANTITIES		
EARTHWORK:	COMMON EXCAVATION MEASURED AS EMBANKMENT	178 C.Y.
	OVEREXCAVATE & REPLACE:	25 C.Y.
	UNSUITABLE BASE MATERIAL (IF REQUIRED)	
CONSTRUCT:	P.C. CONCRETE PAVEMENT	1749 S.Y.
	6" THICK TYPE 47B MOD. INTEGRAL CURB	988 L.F.
	CURB INLET W/ 8' THROAT	2 EA.
FURNISH & INSTALL:	18" DIA. RCP	32 L.F.
	24" R.E. DIA. RCP	92 L.F.
ADJUST TO GRADE:	MANHOLE	1 EA.
FURNISH & APPLY:	TYPE "B" SEEDING W/ MULCH & FERTILIZER	0.29 Ac.

EARTHWORK	
EXCAVATION:	178 C.Y.
*EMBANKMENT:	173 C.Y.
*BORROW:	0 C.Y.
WASTE:	5 C.Y.

*THE ABOVE FIGURES COMPUTED WITHOUT ANY COMPACTION FACTOR



PLOT DATE: 2/20/15 2:48 PM
 SAVED: 5/26/2015 2:38 PM
 C:\projects\127-AI-100\Out-Dwg-Sheet-Dwg\127-AI-100-P&P.dwg

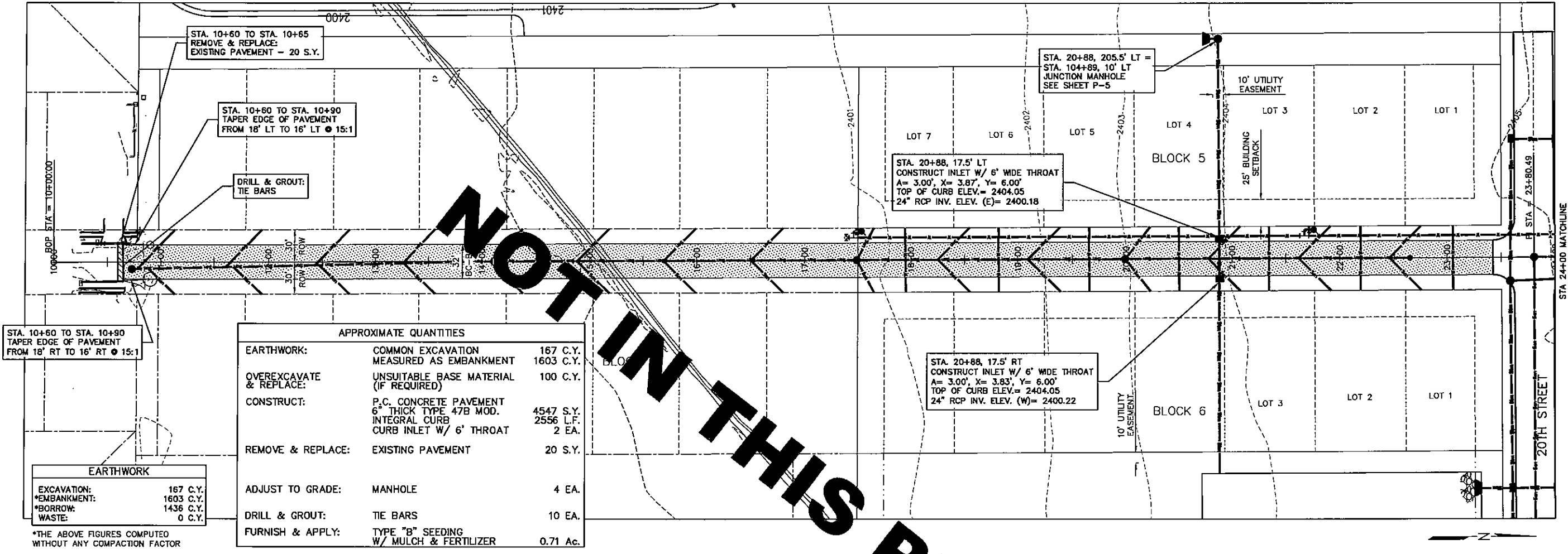
REVISIONS	BY



NORTHWEST 3RD ADDITION PART III
INDEPENDENCE AVE. PAVING - PLAN & PROFILE
LEXINGTON, NEBRASKA

PRELIMINARY FOR REVIEW

DATE:	MAY, 2014
FIELD BOOK:	M&A DWG NO.
DRAWN BY:	LMS
APRVD BY:	
SHEET:	P-4



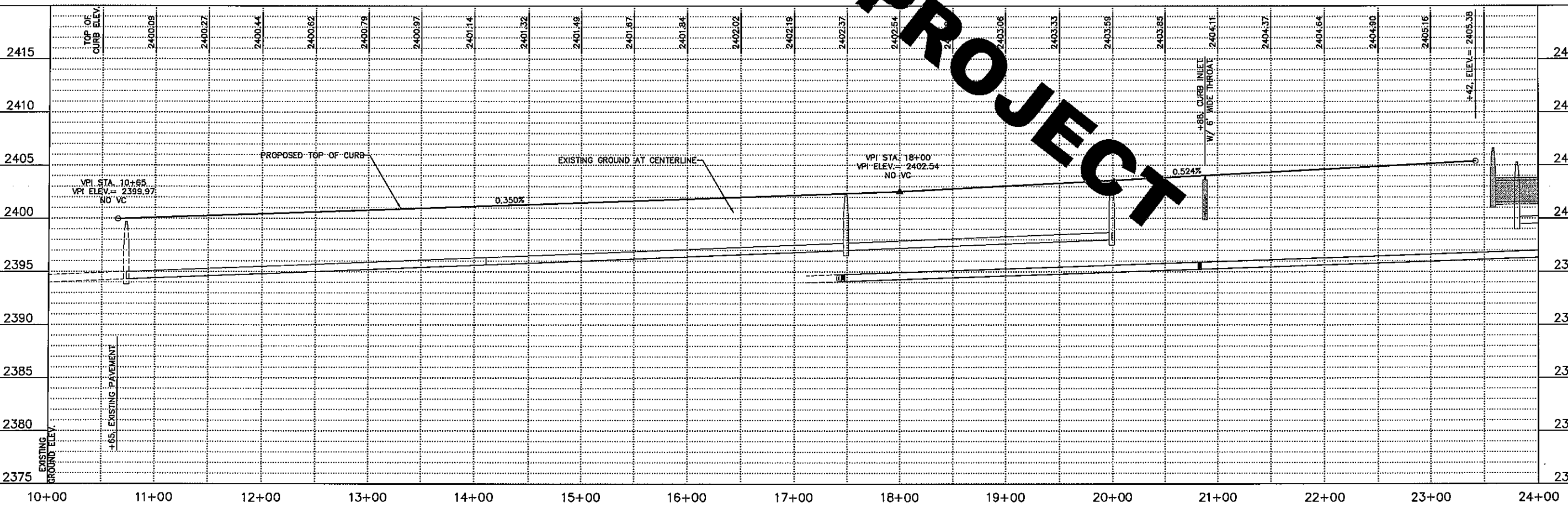
APPROXIMATE QUANTITIES

EARTHWORK:	COMMON EXCAVATION	167 C.Y.
	MEASURED AS EMBANKMENT	1603 C.Y.
OVEREXCAVATE & REPLACE:	UNSATURABLE BASE MATERIAL (IF REQUIRED)	100 C.Y.
CONSTRUCT:	P.C. CONCRETE PAVEMENT	4547 S.Y.
	6" THICK TYPE 47B MOD. INTEGRAL CURB	2556 L.F.
	CURB INLET W/ 6' THROAT	2 EA.
REMOVE & REPLACE:	EXISTING PAVEMENT	20 S.Y.
ADJUST TO GRADE:	MANHOLE	4 EA.
DRILL & GROUT:	TIE BARS	10 EA.
FURNISH & APPLY:	TYPE "B" SEEDING W/ MULCH & FERTILIZER	0.71 Ac.

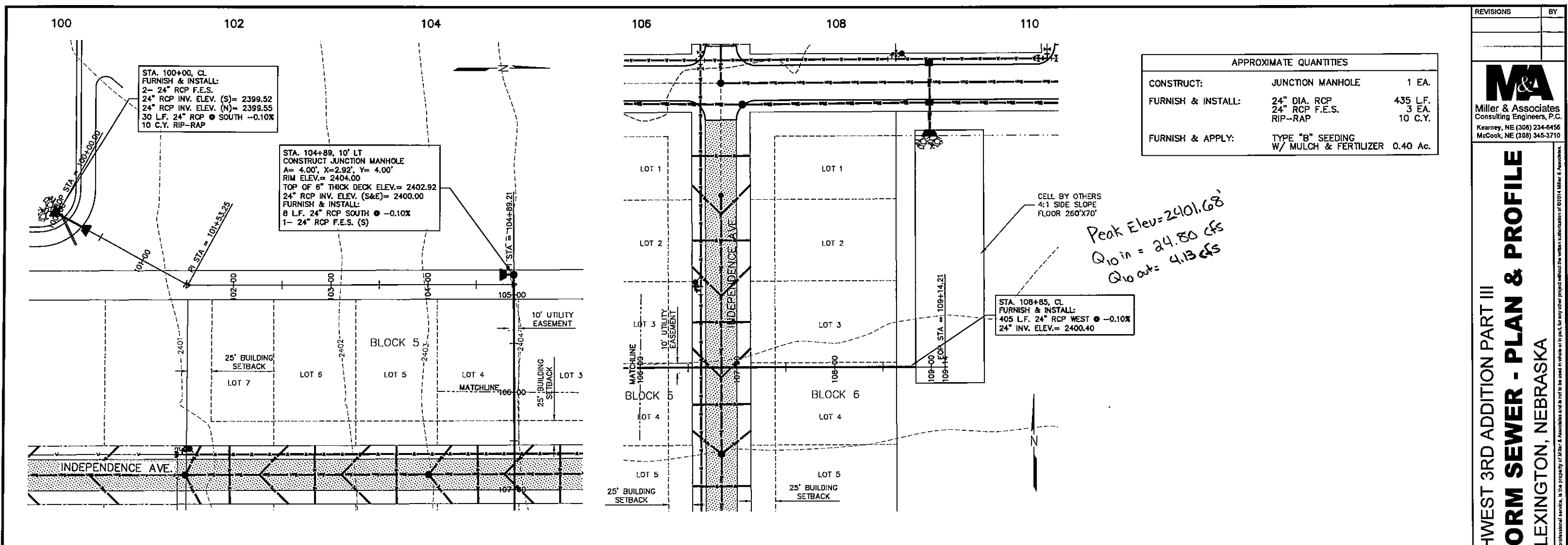
EARTHWORK

EXCAVATION:	167 C.Y.
*EMBANKMENT:	1603 C.Y.
*BORROW:	1436 C.Y.
WASTE:	0 C.Y.

*THE ABOVE FIGURES COMPUTED WITHOUT ANY COMPACTION FACTOR



C:\projects\127-41-100\04-Cur-Curb\Drawings\PLAN.PDF
 SA\EDS\2015 2:46 PM
 PLOTTED 5/20/2015 2:46 PM



APPROXIMATE QUANTITIES		
CONSTRUCT:	JUNCTION MANHOLE	1 EA.
FURNISH & INSTALL:	24" DIA. RCP	435 L.F.
	24" RCP F.E.S.	3 EA.
	RIP-RAP	10 C.Y.
FURNISH & APPLY:	TYPE "B" SEEDING W/ MULCH & FERTILIZER	0.40 Ac.

REVISIONS

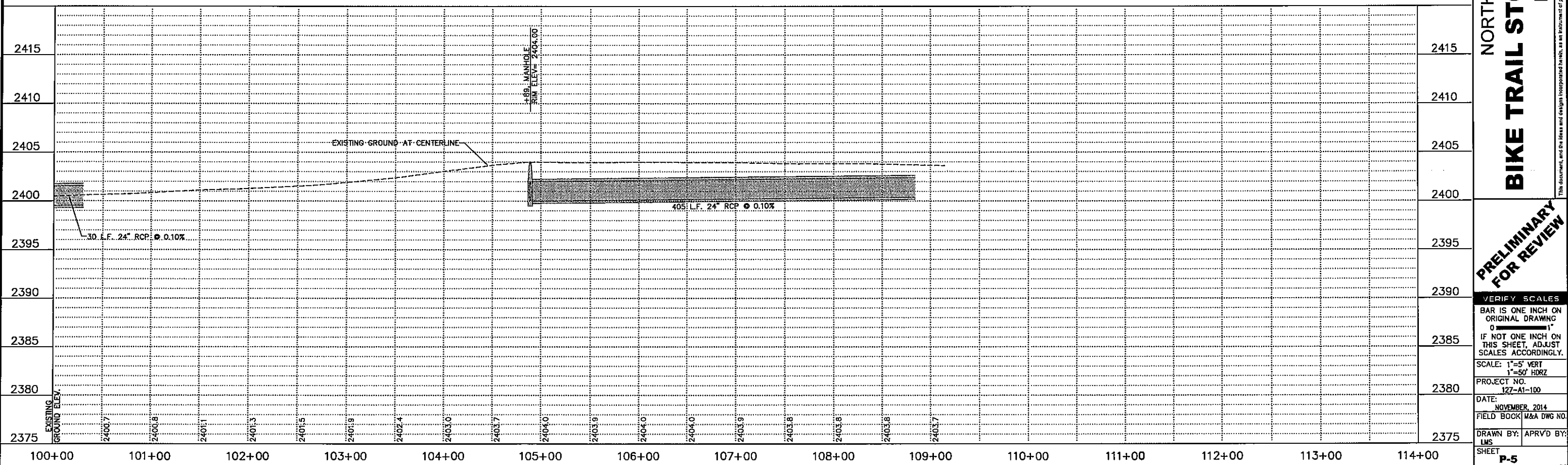
	BY

M&A
 Miller & Associates
 Consulting Engineers, P.C.
 Kearney, NE (308) 234-5456
 McCook, NE (308) 345-3710

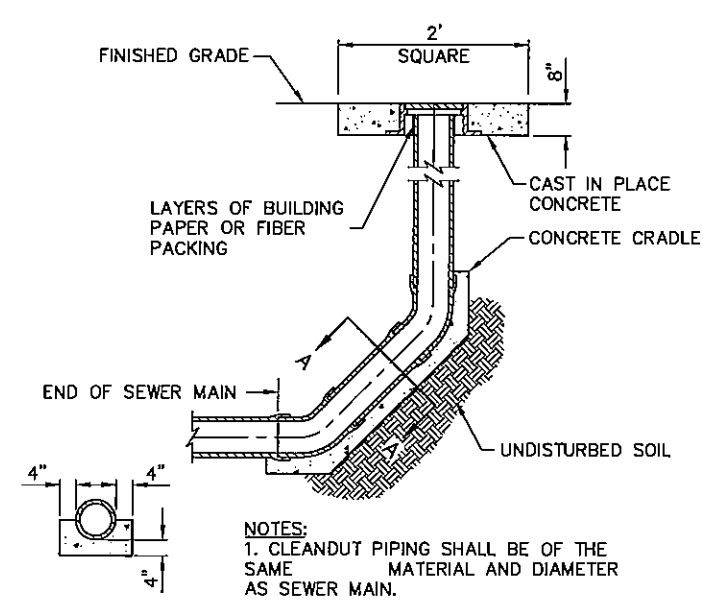
NORTHWEST 3RD ADDITION PART III
BIKE TRAIL STORM SEWER - PLAN & PROFILE
 LEXINGTON, NEBRASKA

PRELIMINARY FOR REVIEW

VERIFY SCALES
 BAR IS ONE INCH ON ORIGINAL DRAWING
 IF NOT ONE INCH ON THIS SHEET, ADJUST SCALES ACCORDINGLY.
 SCALE: 1"=5' VERT
 1"=50' HRZ
 PROJECT NO. 127-A1-100
 DATE: NOVEMBER, 2014
 FIELD BOOK M&A DWG NO.
 DRAWN BY: LMS
 APRVD BY: [Signature]
 SHEET P-5

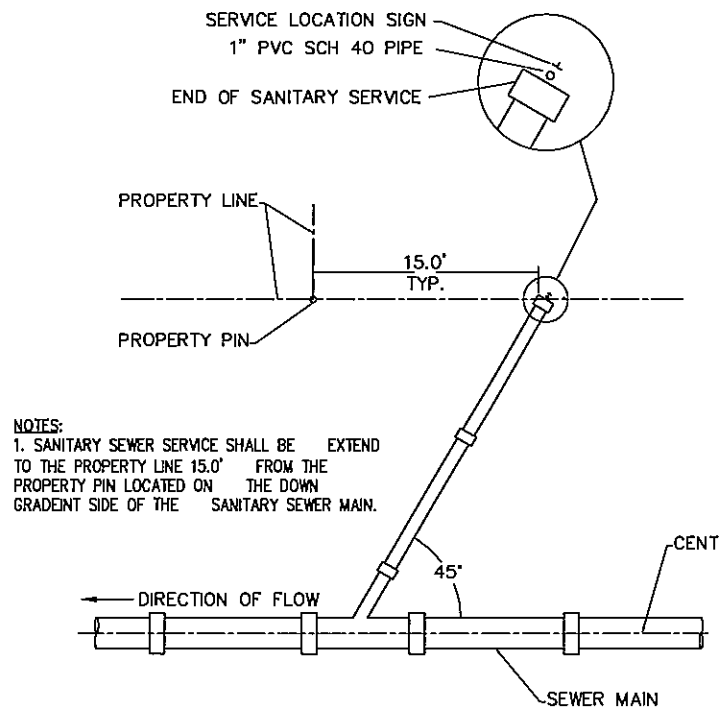


PLOTTED: 5/20/2015 2:48 PM
 SAVED: 5/20/2015 2:36 PM
 C:\projects\127-A1-100\Drawings\Sheet Drawings\127-A1-100-P5.dwg



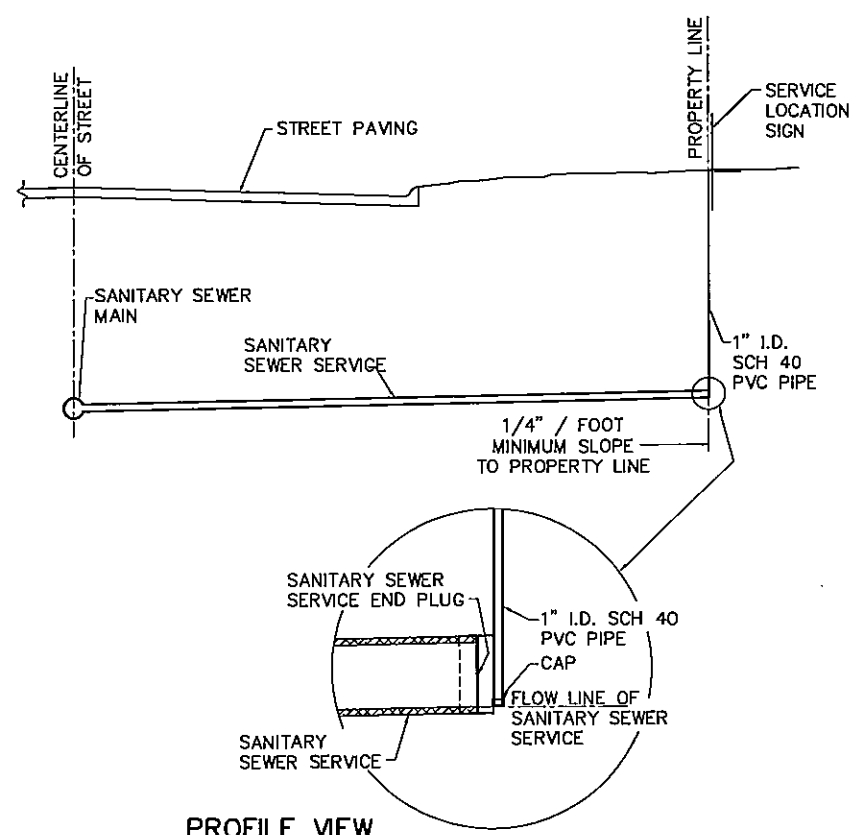
SECTION A-A
STANDARD GRAVITY SEWER CLEANOUT
NO SCALE

- NOTES:
1. CLEANOUT PIPING SHALL BE OF THE SAME MATERIAL AND DIAMETER AS SEWER MAIN.
2. CLEANOUT LID TO BE DEETER 1828, 1830, NEENAH R-1976 OR R-1977, OR APPROVED EQUAL.

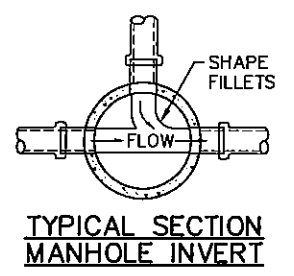


PLAN VIEW
NO SCALE

- NOTES:
1. INSTALL SERVICE AT MINIMUM GRADE OF 1/4 INCH PER FOOT FROM SEWER MAIN TO PROPERTY LINE.
2. INSTALL A 1" INSIDE DIAMETER SCHEDULE 40 PVC PIPE EXTENDING FROM THE END FLOW LINE OF THE SANITARY SEWER SERVICE TO 1' ABOVE THE FINISHED GRADE AT THE PROPERTY LINE. INSTALL PLASTIC CAPS ON THE BOTTOM AND TOP ENDS OF THE 1" PVC PIPE, DO NOT GLUE THE CAP AT THE FINISH GRADE SURFACE SO THAT IT MAY BE REMOVED TO DETERMINE THE DEPTH OF THE SERVICE LINE.

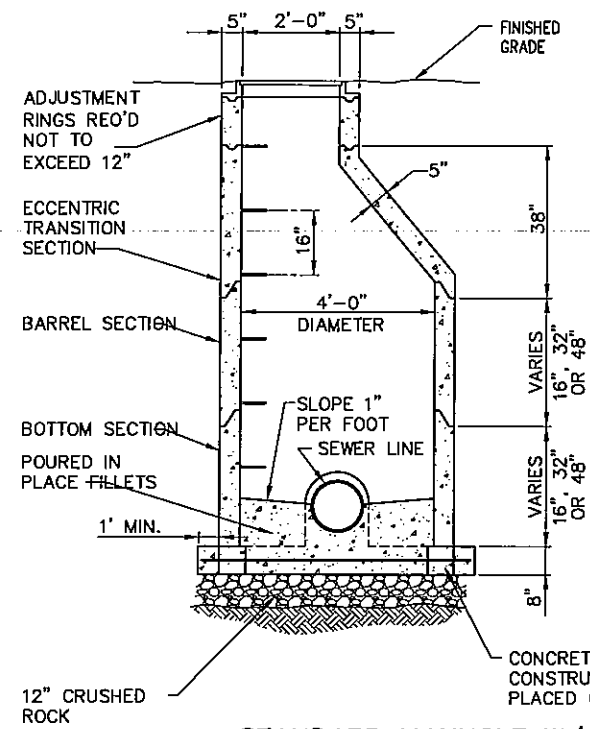


PROFILE VIEW
NO SCALE

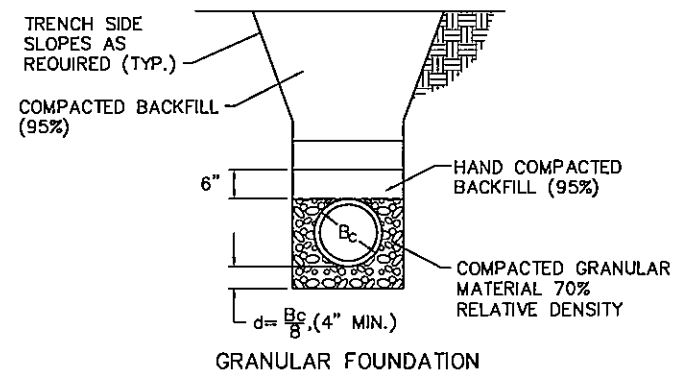


TYPICAL SECTION
MANHOLE INVERT

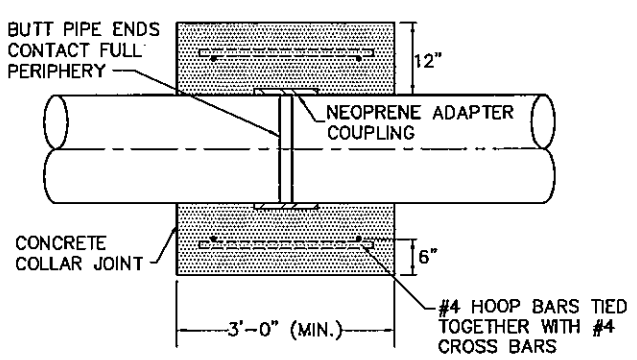
- NOTES:
1. MANHOLE BASE SECTIONS ON NEW PIPE RUNS SHALL BE PRECAST WITH A LOK GASKET PER ASTM RUBBER GASKET SPEC C443 OR ENGINEER APPROVED EQUAL. MANHOLES OVER EXISTING LINES SHALL HAVE SEWER KNOCKOUTS TO ACCOMMODATE INSTALLING OVER EXISTING SEWER LINE.
2. PIPES ENTERING MANHOLE SHALL BE FULLY SUPPORTED BY COMPACTED ROCK BASE. PROVIDE JOINT IN ALL PIPE NOT MORE THAN 1 1/2 FEET FROM MANHOLE WALLS. MATCH TOP OF PIPE ELEVATIONS.
3. TOTAL DEPTH AND PIPE SIZE SHALL BE AS SPECIFIED ON CONSTRUCTION DRAWINGS.
4. MANHOLE RING AND COVER SHALL BE DEETER 1030, OR APPROVED EQUAL. ALL HORIZONTAL BEARING SURFACES SHALL BE MACHINED.
5. STEPS SHALL BE POLYPROPYLENE ENCAPSULATED STEEL ROD AT 16 INCH CENTERS OR ENGINEER APPROVED EQUAL.
6. ALL HORIZONTAL MATING SURFACES BETWEEN CONCRETE AND CONCRETE OR CONCRETE AND METAL SHALL BE SEALED WITH RAM-NEK OR EQUAL, PREMOLDED MASTIC COMPOUND. INSIDE JOINTS SHALL BE GROUTED SMOOTH.
7. ALL VERTICAL EXTERIOR WALL SURFACES SHALL RECEIVE A FIBERED ASPHALT COMPOUND TO A FINAL WET THICKNESS OF 1/8 INCH. PROVIDE COATING MEETING ASTM D449 EQUAL TO TWO COATS OF SONNEBORN HYDROCID 700 B SEMI-MASTIC.
8. NUMBER 4 REBAR SHALL BE INSTALLED IN MANHOLE FLOOR AT 12 INCH CENTERS BOTH WAYS FOR MANHOLES PLACED OVER EXISTING MAINS WHERE BOTTOM OF MANHOLE IS FIELD CONSTRUCTED.
9. CONE SHALL BE ALIGNED TO CENTERLINE OF ROAD WHERE POSSIBLE.



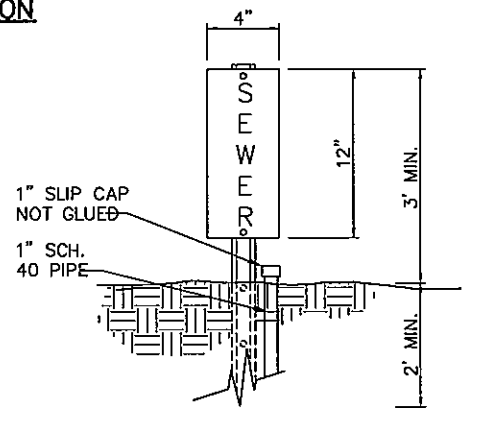
STANDARD MANHOLE W/ A-LOK GASKET
NO SCALE



CLASS "B" GRAVEL BEDDING (SEWER)
NO SCALE

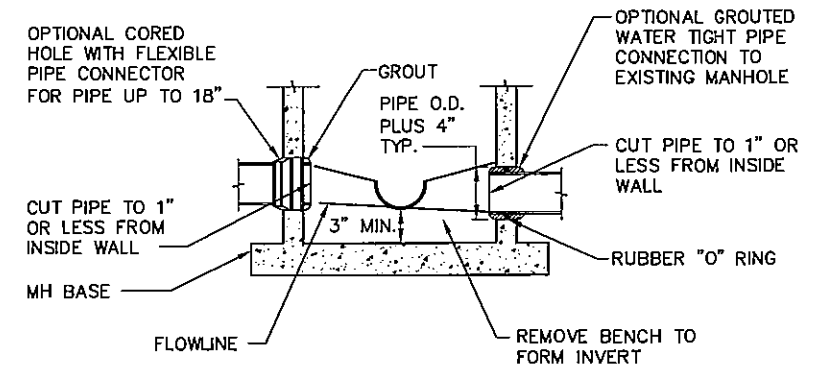


SEWER CONNECTION COLLAR
NO SCALE



SEWER SERVICE LOCATION SIGN
NO SCALE

- CONTRACTOR TO FURNISH SIGN & 6' STEEL POST FOR IDENTIFICATION OF SEWER SERVICES. AND INSTALL SIGN & POST ADJACENT TO THE END OF THE SEWER SERVICE AT THE PROPERTY LINE.
INSTALLATION IS SUBSIDIARY TO THE SEWER SERVICE CONSTRUCTION.
STENCIL BLACK 2" LETTERS ON WHITE BACKGROUND.
SIGN TO BE MADE FROM EXTERIOR MASONITE OR SIMILAR MATERIAL.



TAP EXISTING MANHOLE BASE/
TIE TO EXISTING MANHOLE WITHOUT BOOT
NO SCALE

PRELIMINARY FOR REVIEW

VERIFY SCALES
BAR IS ONE INCH ON ORIGINAL DRAWING
IF NOT ONE INCH ON THIS SHEET, ADJUST SCALES ACCORDINGLY.

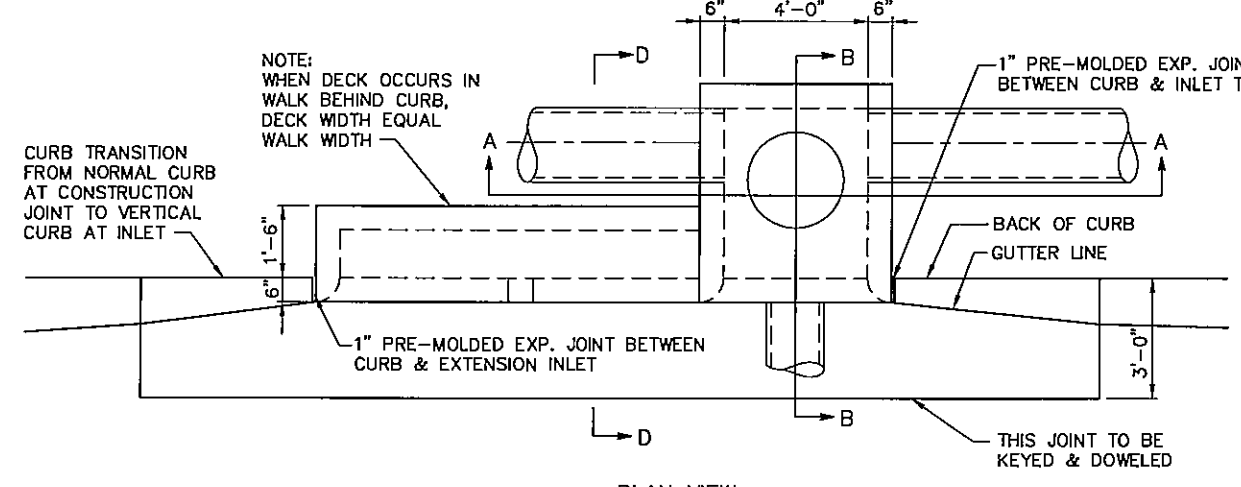
SCALE: NO SCALE
PROJECT NO. 127-A1-100-14
DATE: MAY, 2015
FIELD BOOK M&A DWG NO.
DRAWN BY: LMS
APRVD BY:
SHEET **D-1**

PLOTED: 5/20/2015 2:40 PM
 SAVER: 5/20/2015 1:59 PM Lisa M. Stuber
 C:\Projects\127127-A1-100-Civil-Drwg\Sheet Drawings\SI_CDR.dwg

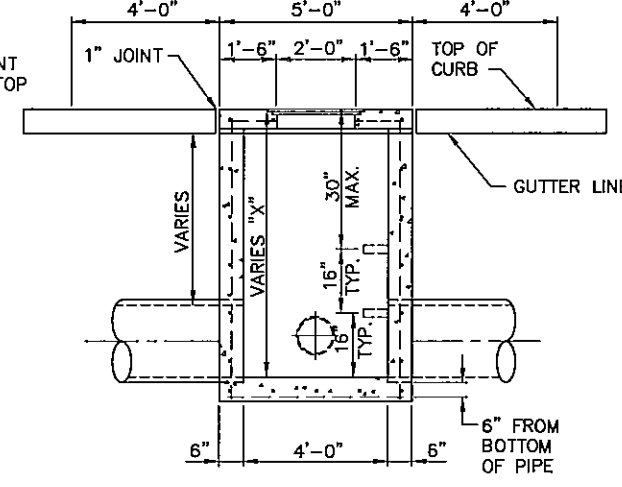
PRELIMINARY FOR REVIEW

VERIFY SCALES
BAR IS ONE INCH ON ORIGINAL DRAWING
IF NOT ONE INCH ON THIS SHEET, ADJUST SCALES ACCORDINGLY.

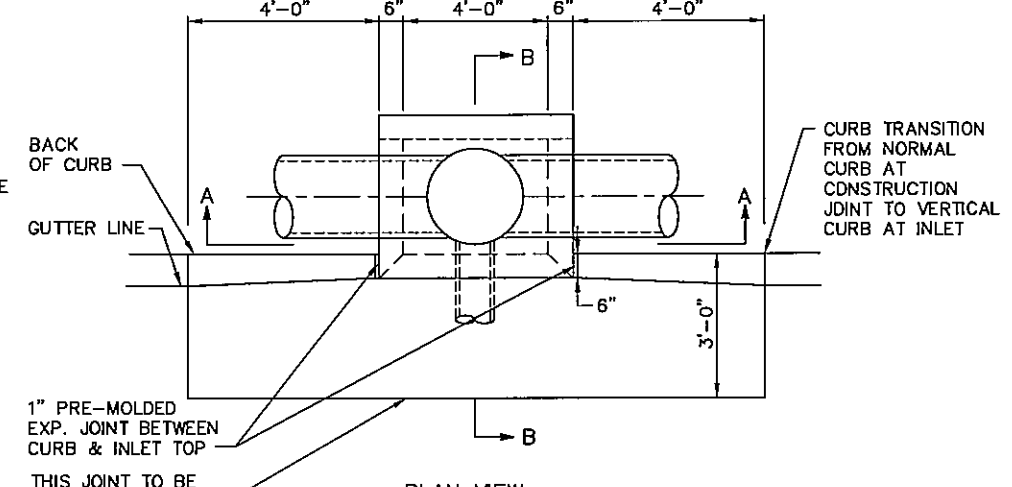
SCALE: NO SCALE
PROJECT NO. 127-A1-100-14
DATE: MAY, 2015
FIELD BOOK: M&A DWG NO.
DRAWN BY: LMS
APRVD BY:
SHEET **D-2**



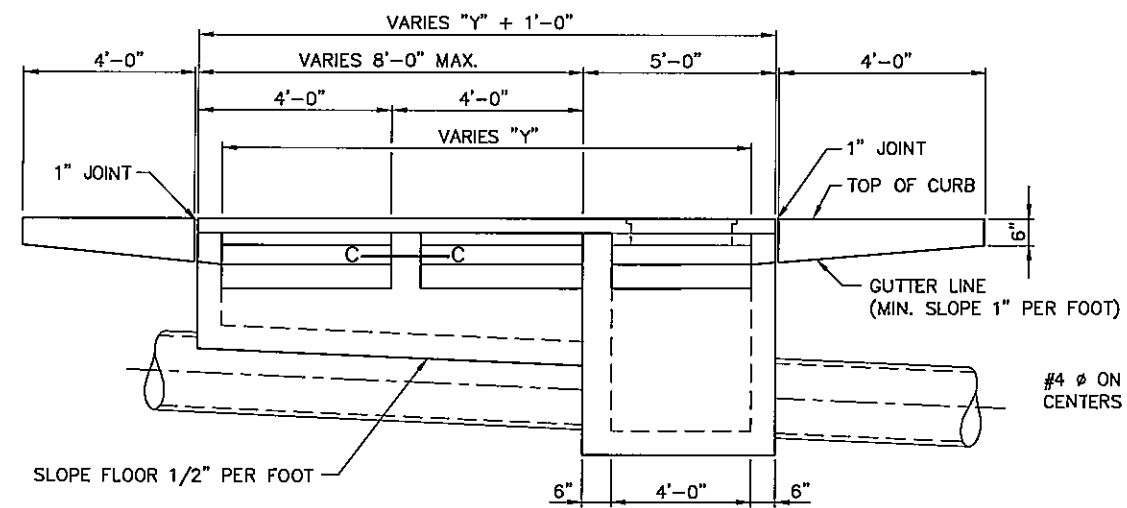
PLAN VIEW
CURB INLET ("Y" = 6' TO 12')



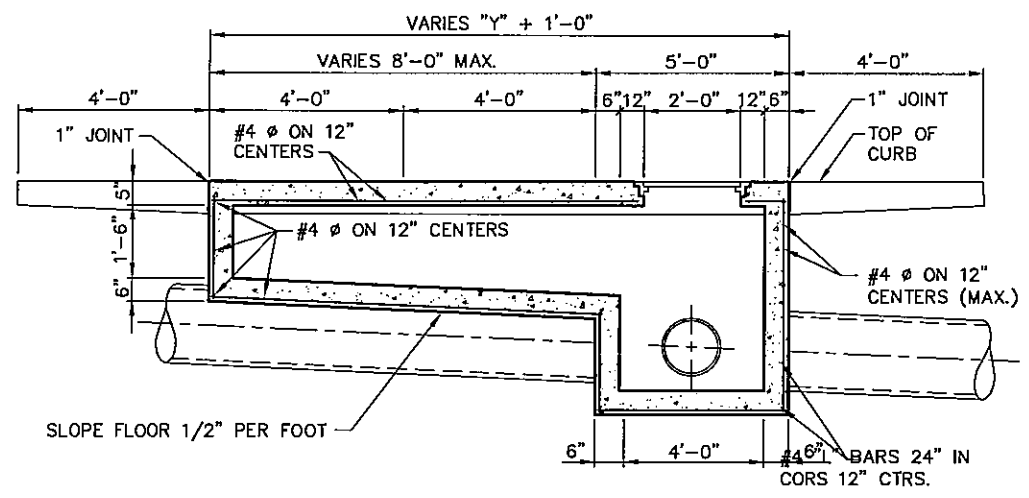
SECTION A-A
CURB INLET ("Y" = 4')



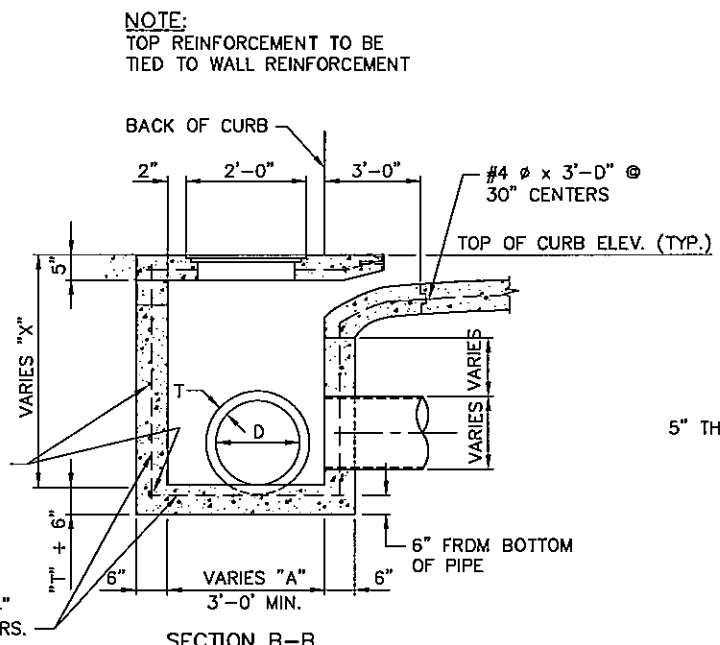
PLAN VIEW
STANDARD CURB INLET ("Y" = 4')



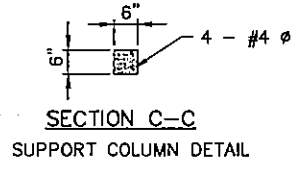
FRONT ELEVATION



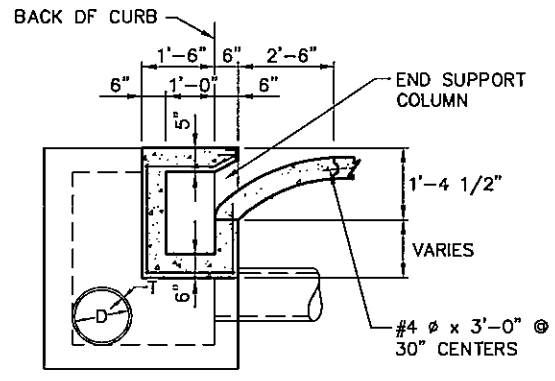
TYPICAL INLET SECTION



SECTION B-B



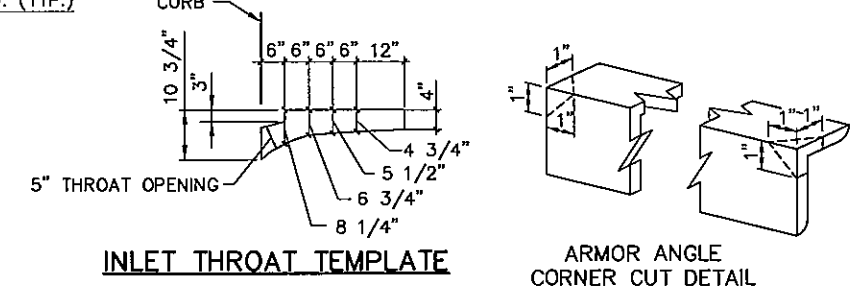
SECTION C-C
SUPPORT COLUMN DETAIL



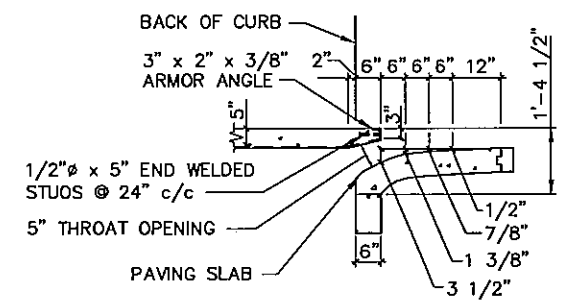
SECTION D-D



STANDARD INLET LID-DEETER 2000 W/ LETTERING



INLET THROAT TEMPLATE



INLET THROAT DETAILS

- NOTES:**
- ALL EXPOSED SURFACES OF CURB INLET CASTINGS AND FACE PLATES SHALL RECEIVE 2 COATS OF ASPHALT BASE PAINT "FLAT BLACK" OR APPROVED EQUAL. ALL METAL SHALL BE FREE FROM ANY PAINT OR COATING BEFORE ASPHALT BASE PAINT IS APPLIED.
 - INLET SHALL BE ALL CONCRETE CONSTRUCTION WITH REINFORCEMENT AS SHOWN.
 - THE COVERING FOR ALL REBARS SHALL BE 1 1/2".
 - INLET COVER AND FRAME SHALL BE DEETER FOUNDRY NO. 2000 OR APPROVED EQUAL.
 - IF EXTENSIONS ARE REQUIRED ON A CURVE, THE BACK DIMENSION OF EACH EXTENSION SHALL BE REDUCED ACCORDING TO THE RADIUS OF THE CURVE.
 - CAST IRON STEPS SHALL BE INSTALLED WHEN THE "X" DIMENSION IS 4'-6" OR GREATER.
 - FOR TYPE B INLET TIE REINFORCING STEEL FROM STORM SEWER PIPE TO REINFORCING STEEL OF INLET.
 - ALL EXPOSED EDGES REQUIRE 3/4" X 3/4" CHAMFER.

6:\projects\127\127-A1-100\Civil-Design\Sheet\SS-CB1.dwg
 5/20/2015 1:59 PM Lisa M. Shuler
 5/20/2015 2:40 PM

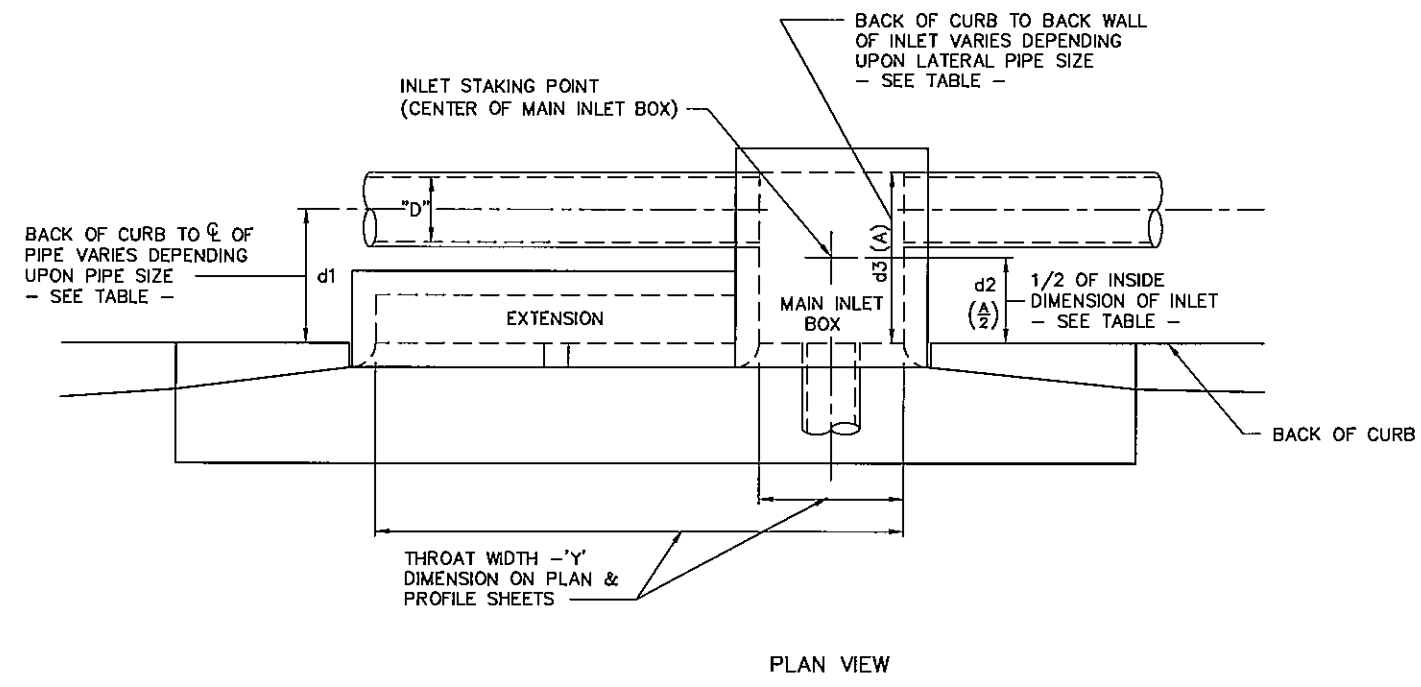


Miller & Associates
Consulting Engineers, P.C.
Kearney, NE (308) 234-6456
McCook, NE (308) 345-3710

NORTHWEST 3RD ADDITION PHASE 2 IMPROVEMENTS
INLET STAKING DETAILS & JUNCTION MANHOLE DETAIL
 LEXINGTON, NEBRASKA

PRELIMINARY FOR REVIEW

VERIFY SCALES
 BAR IS ONE INCH ON ORIGINAL DRAWING
 IF NOT ONE INCH ON THIS SHEET, ADJUST SCALES ACCORDINGLY.
 SCALE: NO SCALE
 PROJECT NO. 127-A1-100-14
 DATE: MAY, 2015
 FIELD BOOK M&A DWG NO.
 DRAWN BY: LMS APRVD BY:
 SHEET **D-3**



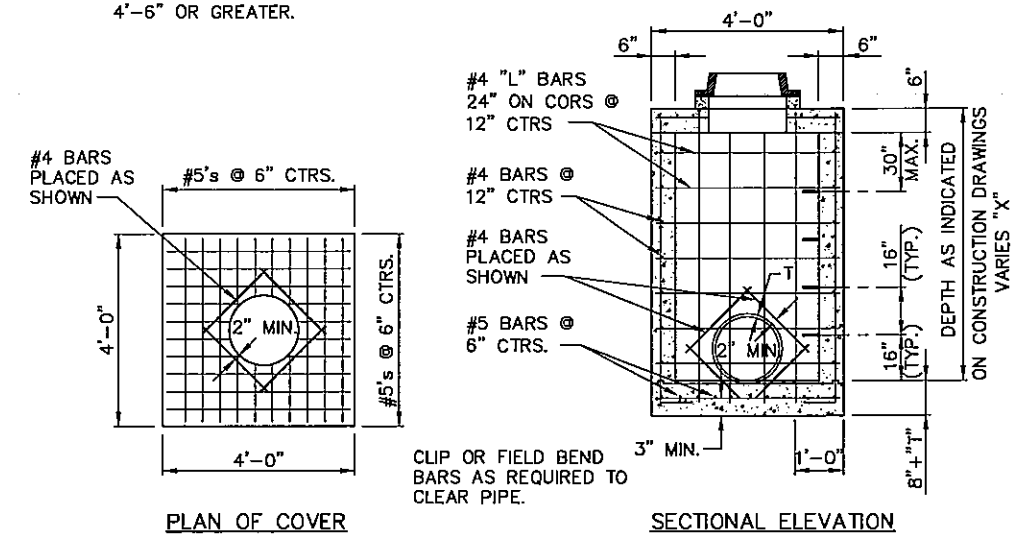
STANDARD INLET STAKING POINT
NO SCALE

INLET DEPTH= "X" DIMENSION ON PLAN & PROFILE SHEETS
 d3 = "A" DIMENSION ON PLAN & PROFILE SHEETS
 d3 = 3.00' IF NO LONGITUDINAL PIPE
 d2 = 1.50' IF NO LONGITUDINAL PIPE
 d1 = CENTER OF LONGITUDINAL PIPE BEHIND BACK OF CURB.

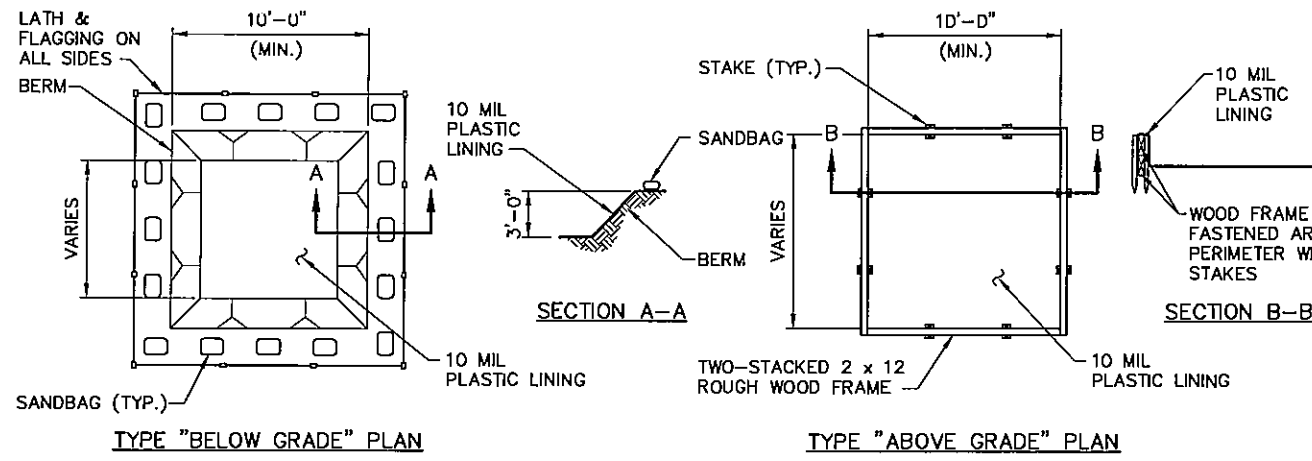
DIA. OF PIPE PARALLEL TO ROADWAY "D"	d1	d2 (A/2)	d3 (A)
12"	3.33'	2.00'	4.00'
15"	3.44'	2.12'	4.25'
18"	3.62'	2.29'	4.58'
21"	3.82'	2.46'	4.92'
24"	3.92'	2.58'	5.17'
27"	4.10'	2.75'	5.50'
30"	4.21'	2.87'	5.75'
36"	4.50'	3.17'	6.33'
42"	4.80'	3.46'	6.92'
48"	5.08'	3.75'	7.50'
54"	5.37'	4.04'	8.08'
60"	5.67'	4.33'	8.67'
66"	5.96'	4.62'	9.25'

d3 = 2(d2)

- NOTES:**
1. MAXIMUM SIZE PIPE TO BE USED - 36" I.D.
 2. TOTAL DEPTH OF MANHOLE SHALL BE AS SPECIFIED ON CONSTRUCTION DRAWINGS.
 3. MANHOLE RING AND COVER SHALL BE DEETER 1030, OR APPROVED EQUAL, IN ROAD-WAY OR DEETER 200D, OR APPROVED EQUAL, FOR OTHER CONDITIONS.
 4. MINIMUM COVER SHALL BE 2" EXCEPT AS SHOWN, FROM THE FACE OF CONCRETE TO SURFACE OF ANY REINFORCING BARS.
 5. CAST IRON STEP SHALL BE INSTALLED WHEN THE "X" DIMENSION IS 4'-6" OR GREATER.



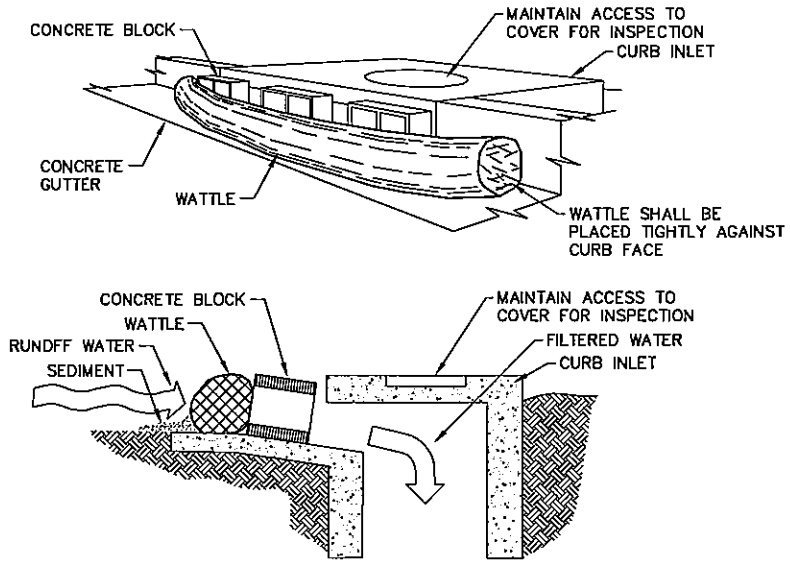
JUNCTION MANHOLE DETAIL
NO SCALE



NOTES:

1. ACTUAL LAYOUT DETERMINED IN FIELD.
2. THE CONCRETE WASHOUT SIGN SHALL BE INSTALLED WITHIN 30 FEET OF THE TEMPORARY CONCRETE WASHOUT FACILITY.
3. CONTRACTOR TO DETERMINE ACTUAL SIZE REQUIRED TO MEET THE NEEDS FOR THE VOLUME OF CONCRETE TRUCK WASHOUT WATER ANTICIPATED PLUS RAINFALL.

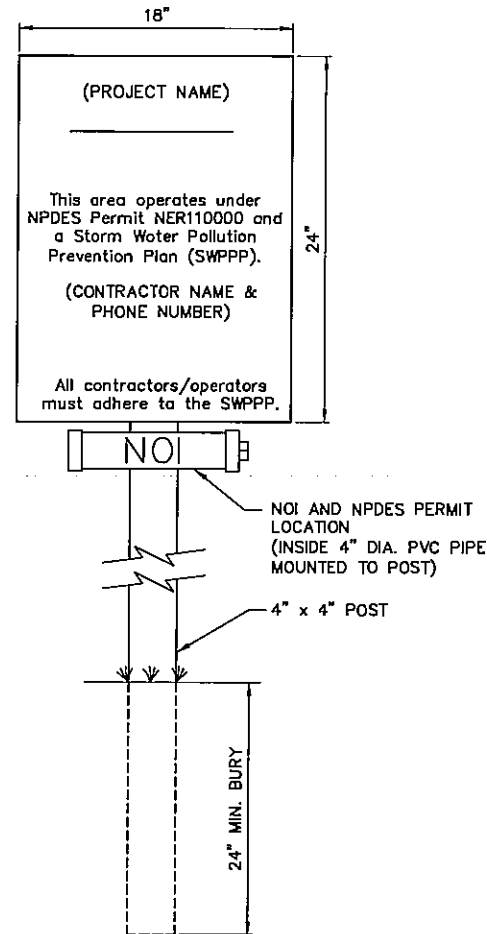
CONCRETE WASHOUT PIT
NO SCALE



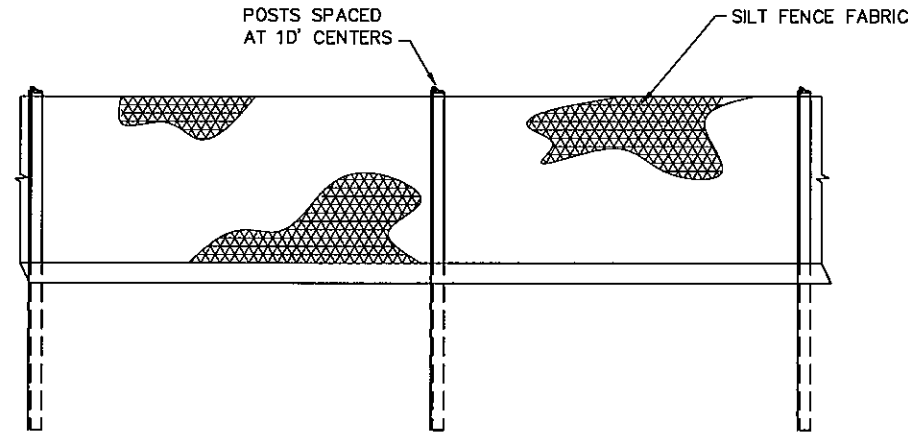
NOTES:

1. THIS METHOD OF INLET PROTECTION IS APPLICABLE AT CURB INLETS WHERE PONDING IN FRONT OF THE STRUCTURE IS NOT LIKELY TO CAUSE INCONVENIENCE OR DAMAGE TO ADJACENT STRUCTURES AND UNPROTECTED AREAS.
2. DEPENDING ON THE OPENING OF THE INLET, THE CONCRETE BLOCK MAY HAVE TO BE PLACED VERTICAL.

CURB INLET PROTECTION
NO SCALE



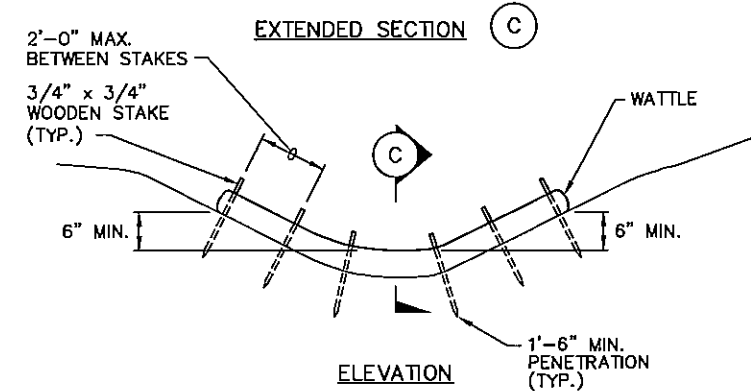
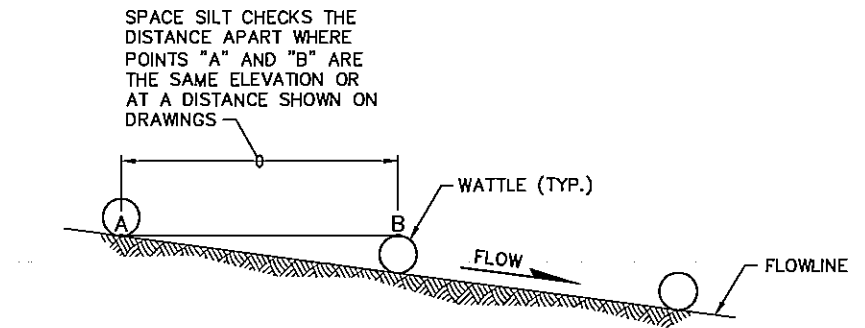
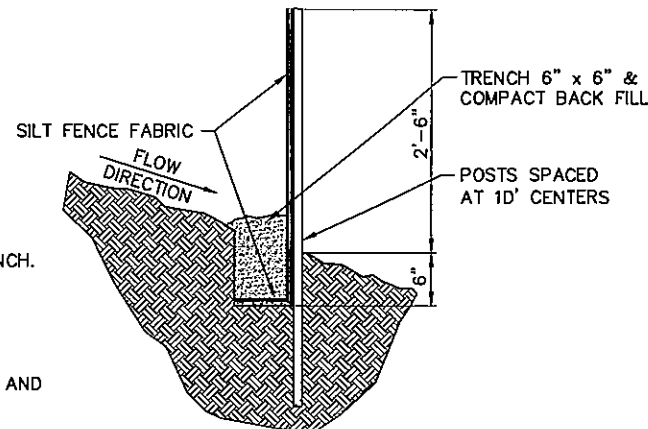
SWPPP & PERMIT SIGN
NO SCALE



INSTALLATION:

1. DIG A 6" X 6" TRENCH.
2. PLACE POSTS INTO GROUND WITH FABRIC ON UPSTREAM SIDE OF POST, PLACE FABRIC IN TRENCH.
3. USE EXCAVATED SOIL TO BACK FILL TRENCH.
4. WHEN CONNECTING TWO SECTIONS OF FABRIC OVERLAP A MINIMUM OF 6" AND USE 2 COMMON POSTS ON SPLICE.
5. MAINTENANCE SHALL BE PERFORMED AS NEEDED AND MATERIAL SHALL BE REMOVED WHEN 1/3 OF THE EXPOSED FABRIC IS COVERED.

STANDARD SILT FENCE
NO SCALE



WATTLE SILT CHECK DETAIL
NO SCALE

PRELIMINARY FOR REVIEW

VERIFY SCALES

BAR IS ONE INCH ON ORIGINAL DRAWING

IF NOT ONE INCH ON THIS SHEET, ADJUST SCALES ACCORDINGLY.

SCALE: NO SCALE

PROJECT NO. 127-A1-100-14

DATE: MAY, 2015

FIELD BOOK: M&A DWG NO.

DRAWN BY: LMS

APRVD BY:

SHEET **D-5**