

STATE OF NEBRASKA

DEPARTMENT OF ROADS

PROJECT NO. STP-283-2(102)
C.N. 61433

ASH ST.-JEFFERSON ST. IN LEXINGTON

LIMITS OF CONSTRUCTION PLANS

DAWSON COUNTY

R.P. 58+36 HWY. US-283
STA. 141+85.75
END PROJECT



T 9 N

TRAFFIC COUNTS		
YEAR:	2010	2030
ADT:	15,235	19,095
DHV:	1,525	1,910
T=	2 %	D= 2 %

PROJECT TYPE	
<input type="checkbox"/>	3R
<input type="checkbox"/>	3R w/SHOULDER WIDENING
<input type="checkbox"/>	NEW RECONSTRUCTION
<input type="checkbox"/>	FULL GRADING
<input type="checkbox"/>	NEW ALIGNMENT
DESIGNER/SQUAD LEADER: PAUL WISNIESKI	
PHONE #	479-3880
UNIT HEAD: CARL HUMPHREY	
PHONE #	479-3842

DESIGN STANDARD: MUNICIPAL STATE HIGHWAY
DESIGN SPEED: 40 mph

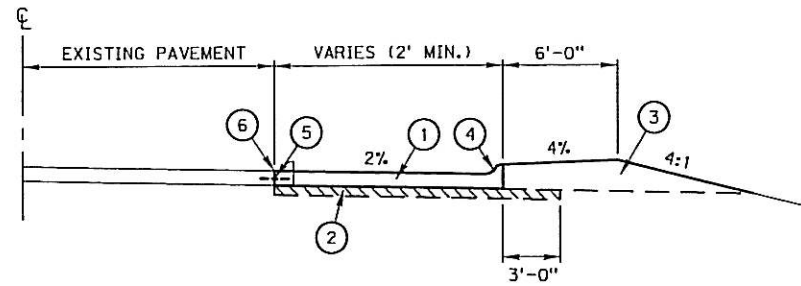
PROJECT LENGTH = .75 MILES
R.P. 57+70 TO R.P. 58+36

TENTATIVE LETTING: JUNE 17, 2010
BALANCE FACTOR TO BE USED: 1.40

TYPICAL CROSS SECTIONS

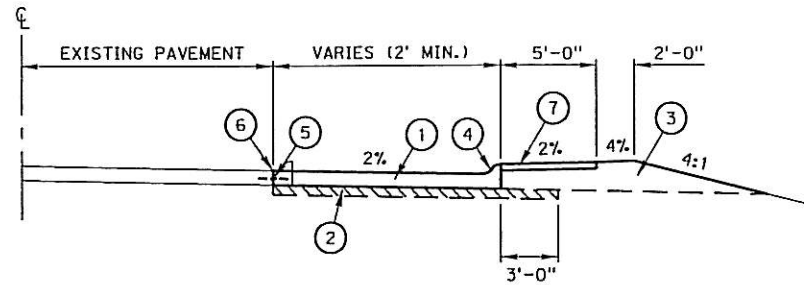
PRELIMINARY PLAN
NOT FINAL - SUBJECT TO CHANGE

PROJECT NO.	SHEET NO.
283-2(102)	2-T1
C.N. 61433	



STATION TO STATION

113+60.00	-	114+77.46 RT.	(U.S. 283)
503+41.95	-	504+95.28 RT.	(WALNUT ST.)
503+26.53	-	503+84.92 LT.	(WALNUT ST.)

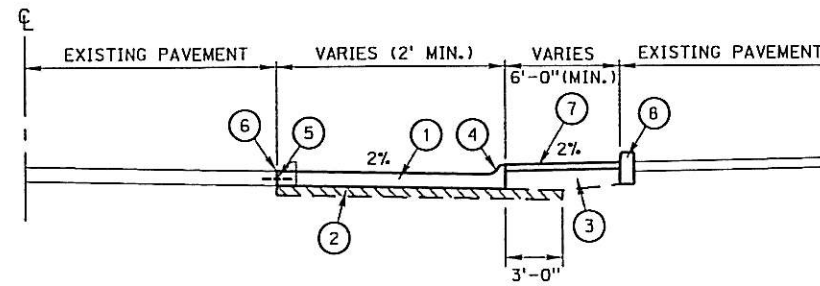


STATION TO STATION

112+39.56	-	112+79.80 RT.	(U.S. 283)
133+31.95	-	134+54.06 LT.	(U.S. 283)
134+88.81	-	135+41.22 LT.	(U.S. 283)
500+79.76	-	502+00.00 RT.	(WALNUT ST.)
501+41.11	-	502+00.00 LT.	(WALNUT ST.)
2005+93.74	-	2006+82.08 RT.	(5TH ST.)

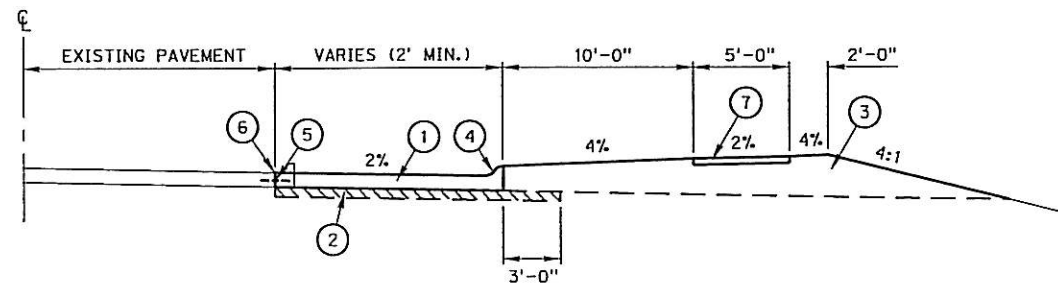
LEGEND

- ① 8" CONCRETE PAVEMENT
- ② SUBGRADE PREPARATION
- ③ SHOULDER CONSTRUCTION
- ④ 6" INTEGRAL CURB
- ⑤ 18" TIE BAR
- ⑥ SAWCUT EXISTING PAVEMENT
- ⑦ 4" CONCRETE SIDEWALK
- ⑧ CONCRETE BARRIER CURB
- ⑨ CONCRETE MEDIAN SURFACING
- ⑩ SANDFILL FOR MEDIAN
- ⑪ 4" IMPRINTED CONCRETE SURFACING
- ⑫ LONGITUDINAL JOINT
- ⑬ 8" DOWELED CONCRETE PAVEMENT
- ⑭ PROFILE GRADE POINT



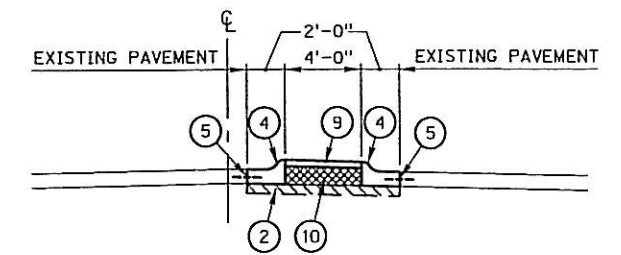
STATION TO STATION

111+94.62	-	113+06.52 LT.	(U.S. 283)
113+75.80	-	114+47.66 LT.	(U.S. 283)
135+04.16	-	135+52.68 RT.	(U.S. 283)
1000+23.11	-	1000+93.90 RT.	(GRANT ST.)
3006+59.26	-	3006+94.97 LT.	(JEFFERSON ST.)



STATION TO STATION

3000+39.33	-	3001+56.75 LT.	(JEFFERSON ST.)
------------	---	----------------	-----------------



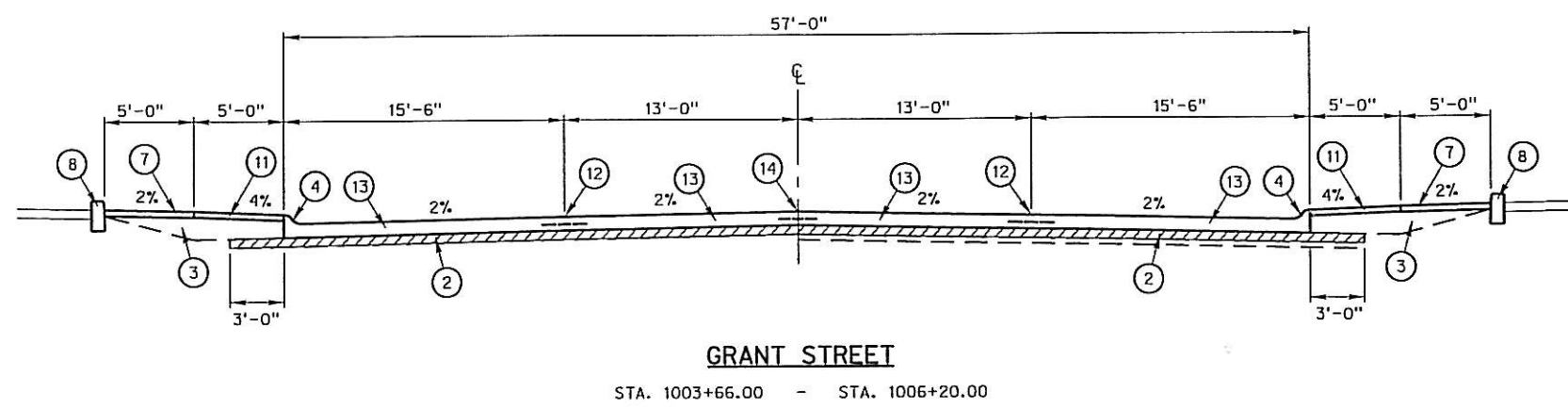
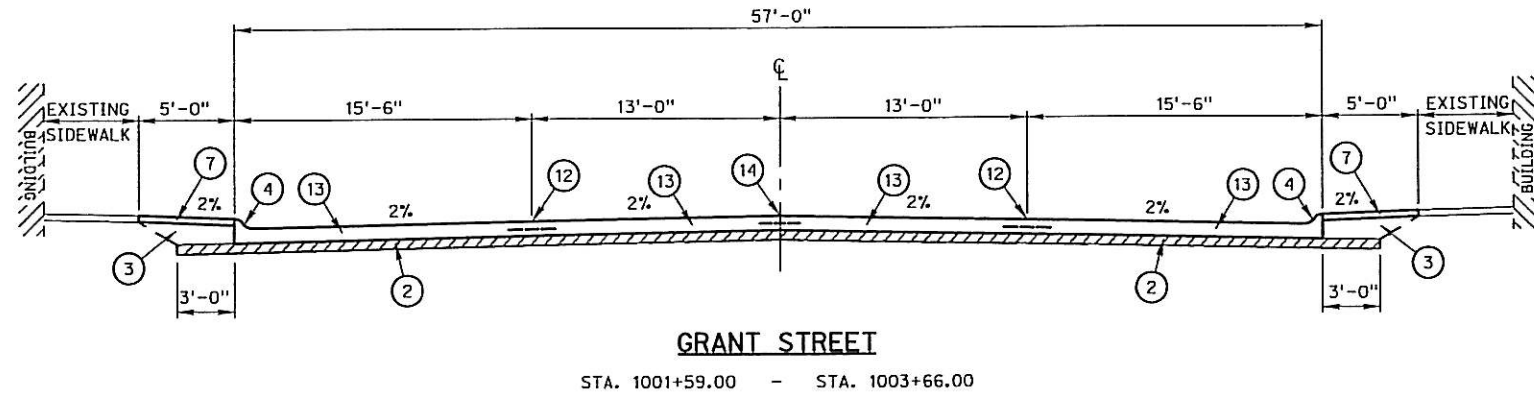
STATION TO STATION

501+98.46	-	502+61.13 LT.	(WALNUT ST.)
503+58.10	-	504+47.08 RT.	(WALNUT ST.)

TYPICAL CROSS SECTIONS

PRELIMINARY PLAN
NOT FINAL - SUBJECT TO CHANGE

PROJECT NO.	SHEET NO.
283-2(102)	2-T2
C.N. 61433	



LEGEND

- ① 8" CONCRETE PAVEMENT
- ② SUBGRADE PREPARATION
- ③ SHOULDER CONSTRUCTION
- ④ 6" INTEGRAL CURB
- ⑤ 18" TIE BAR
- ⑥ SAWCUT EXISTING PAVEMENT
- ⑦ 4" CONCRETE SIDEWALK
- ⑧ CONCRETE BARRIER CURB
- ⑨ CONCRETE MEDIAN SURFACING
- ⑩ SANDFILL FOR MEDIAN
- ⑪ 4" IMPRINTED CONCRETE SURFACING
- ⑫ LONGITUDINAL JOINT
- ⑬ 8" DOWELED CONCRETE PAVEMENT
- ⑭ PROFILE GRADE POINT

Roadway Design Division

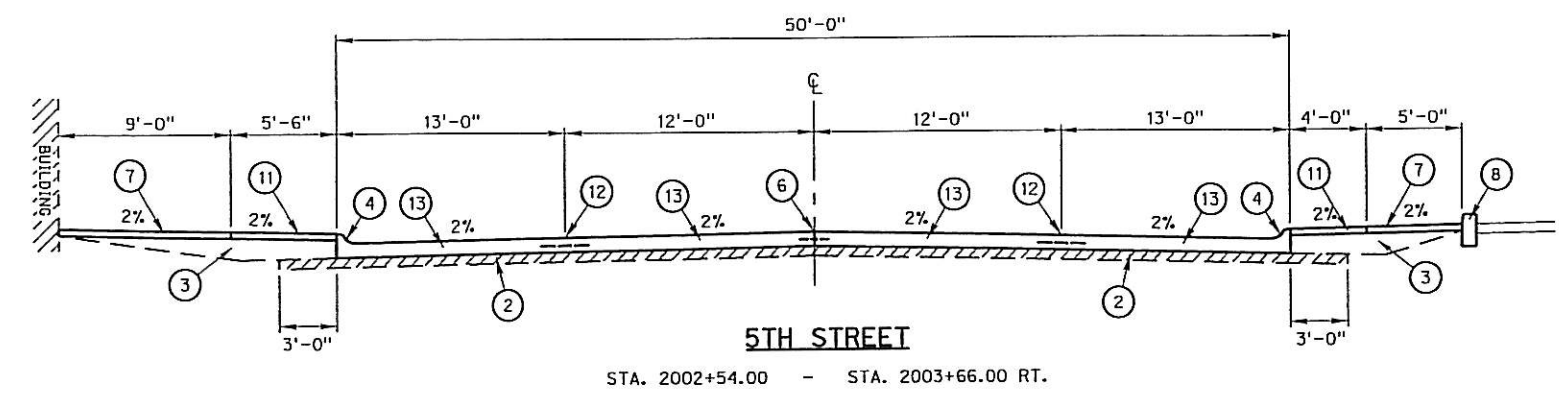
DRDESIGN55
60113017
22-DEC-2008 15:26

614330d102.dgn
10:1
SHEET 1 OF 1

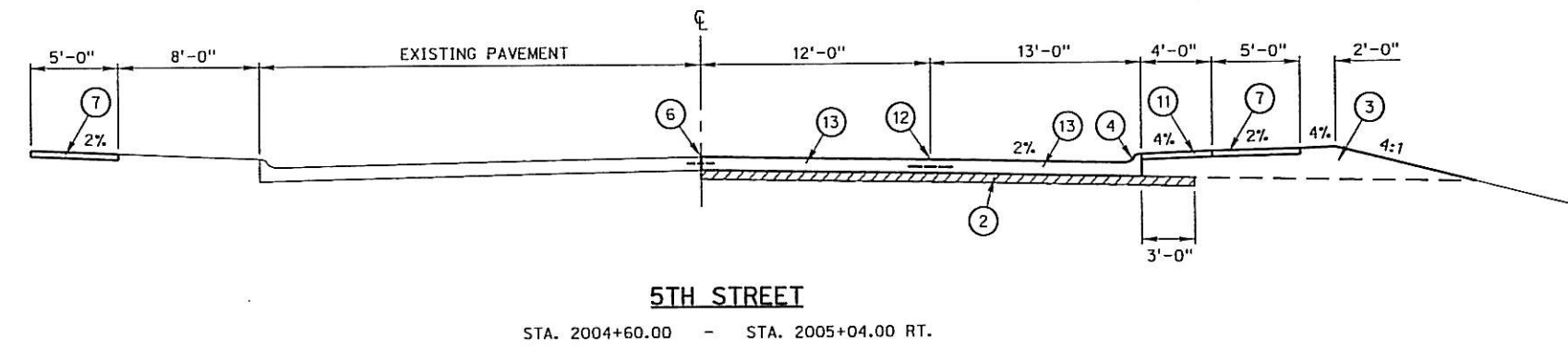
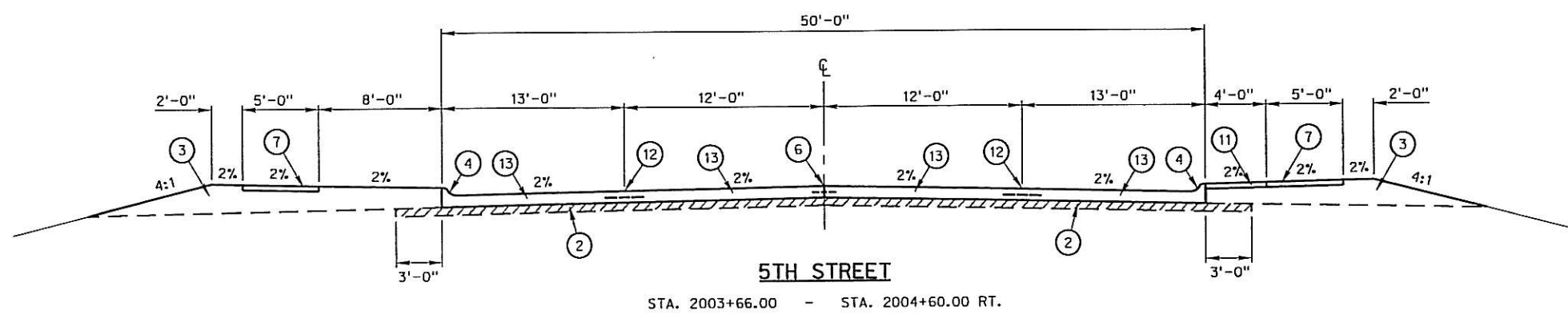
TYPICAL CROSS SECTIONS

PRELIMINARY PLAN
NOT FINAL - SUBJECT TO CHANGE

PROJECT NO.	SHEET NO.
283-2(102)	2-T3
C.N. 61433	



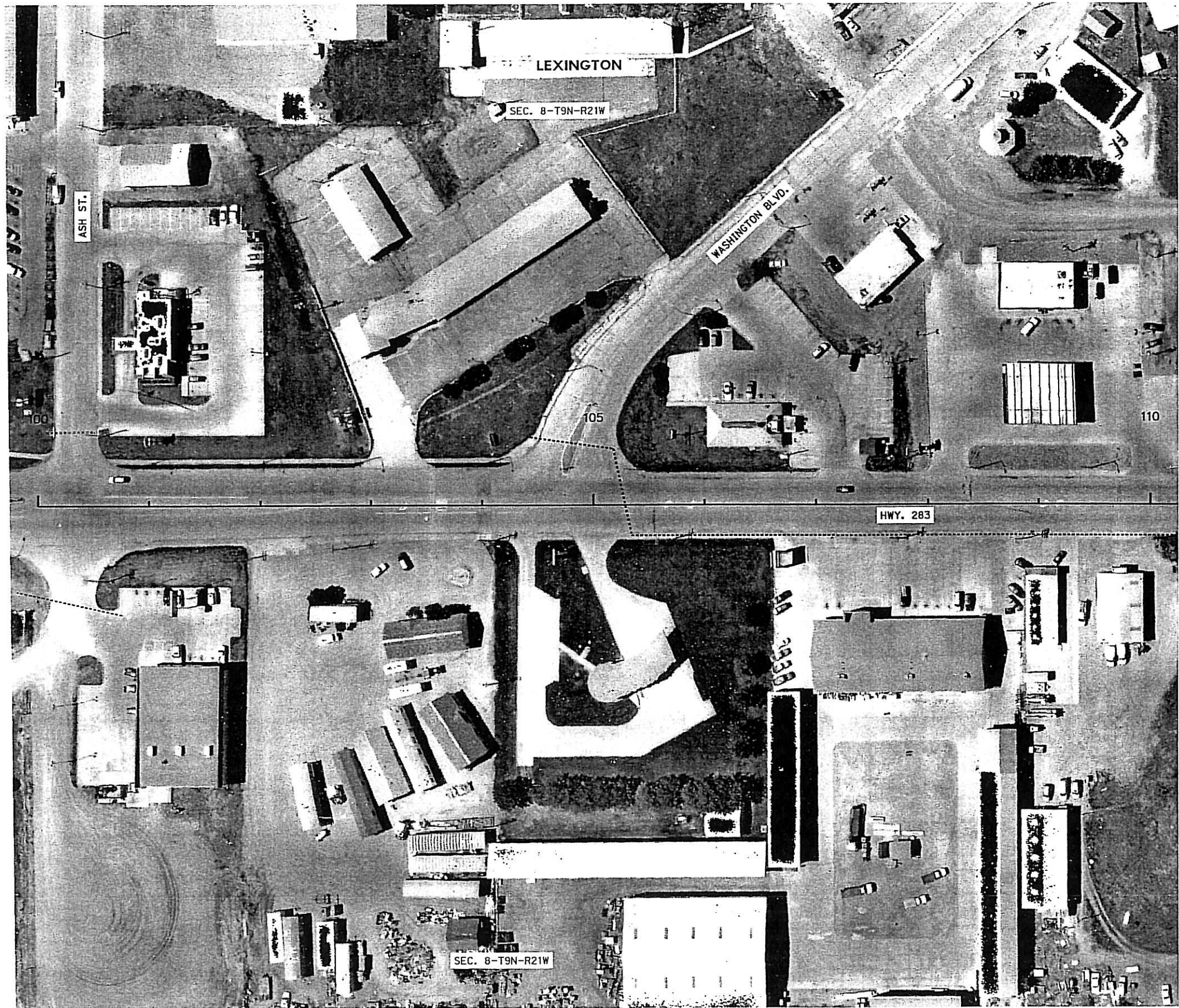
- LEGEND**
- ① 8" CONCRETE PAVEMENT
 - ② SUBGRADE PREPARATION
 - ③ SHOULDER CONSTRUCTION
 - ④ 6" INTEGRAL CURB
 - ⑤ 18" TIE BAR
 - ⑥ SAWCUT EXISTING PAVEMENT
 - ⑦ 4" CONCRETE SIDEWALK
 - ⑧ CONCRETE BARRIER CURB
 - ⑨ CONCRETE MEDIAN SURFACING
 - ⑩ SANDFILL FOR MEDIAN
 - ⑪ 4" IMPRINTED CONCRETE SURFACING
 - ⑫ LONGITUDINAL JOINT
 - ⑬ 8" DOWELED CONCRETE PAVEMENT
 - ⑭ PROFILE GRADE POINT



Roadway Design Division

DESIGN55
dcr13017
22-DEC-2009 15:26

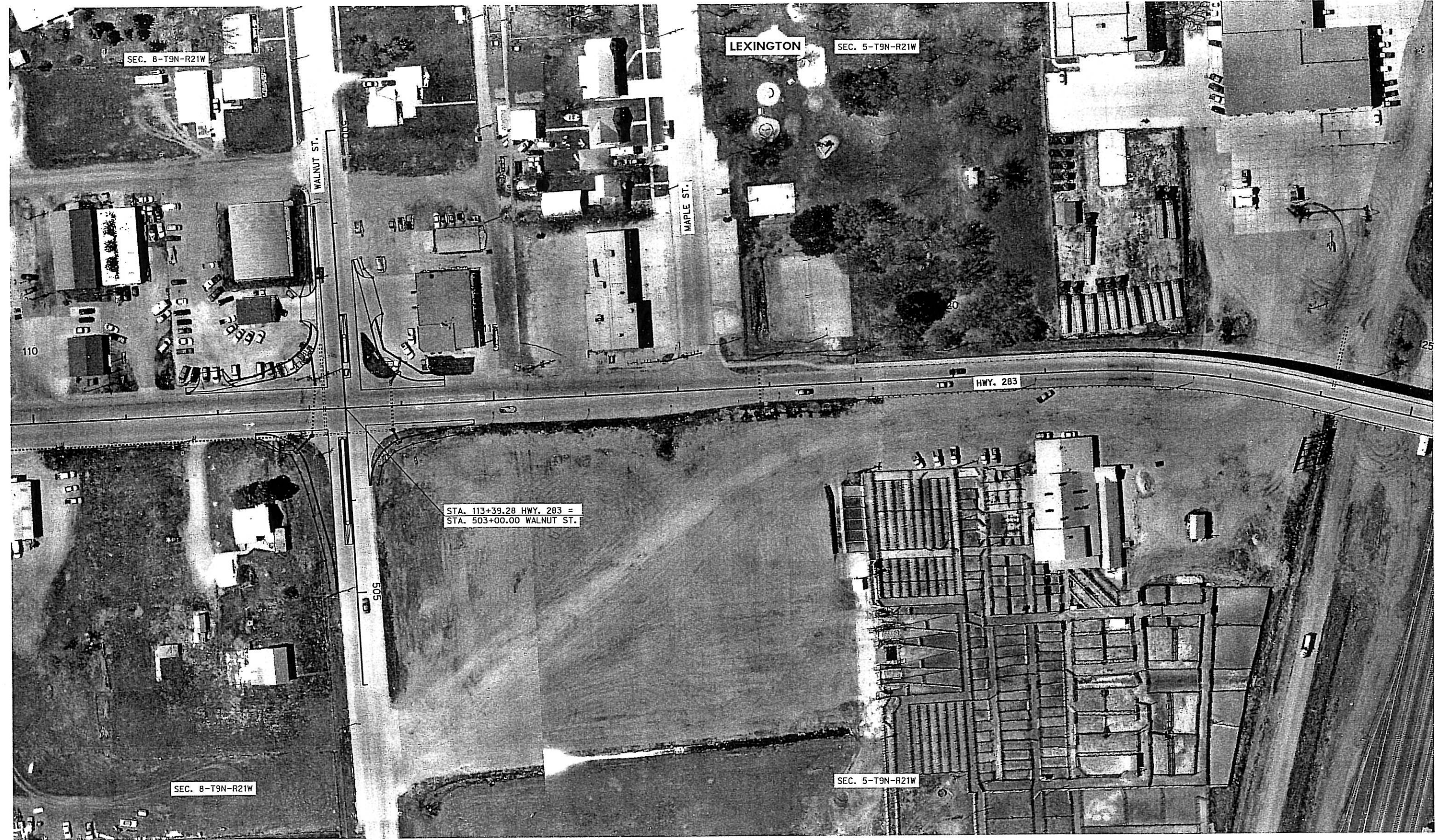
614330d+03.dgn
10:1



ASH ST. - JEFFERSON ST. LEXINGTON
DAWSON COUNTY

DATE: 4-13-2006
 FLIGHT: 10,649
 SCALE: 50' = 1"

Rightway Design Division



DRDESIGN55
0013017
18-DEC-2009 13:45

614330d002.dgn
100:1

DATE: 4-13-2006
FLIGHT: 10,649
SCALE: 50' = 1"



DRDESIGNS5
2011-01-11-2009 13:45
18-DEC-2009 13:45

614330d03.dgn
1001

DATE: 4-13-2006
 FLIGHT: 10,649
 SCALE: 50' = 1"