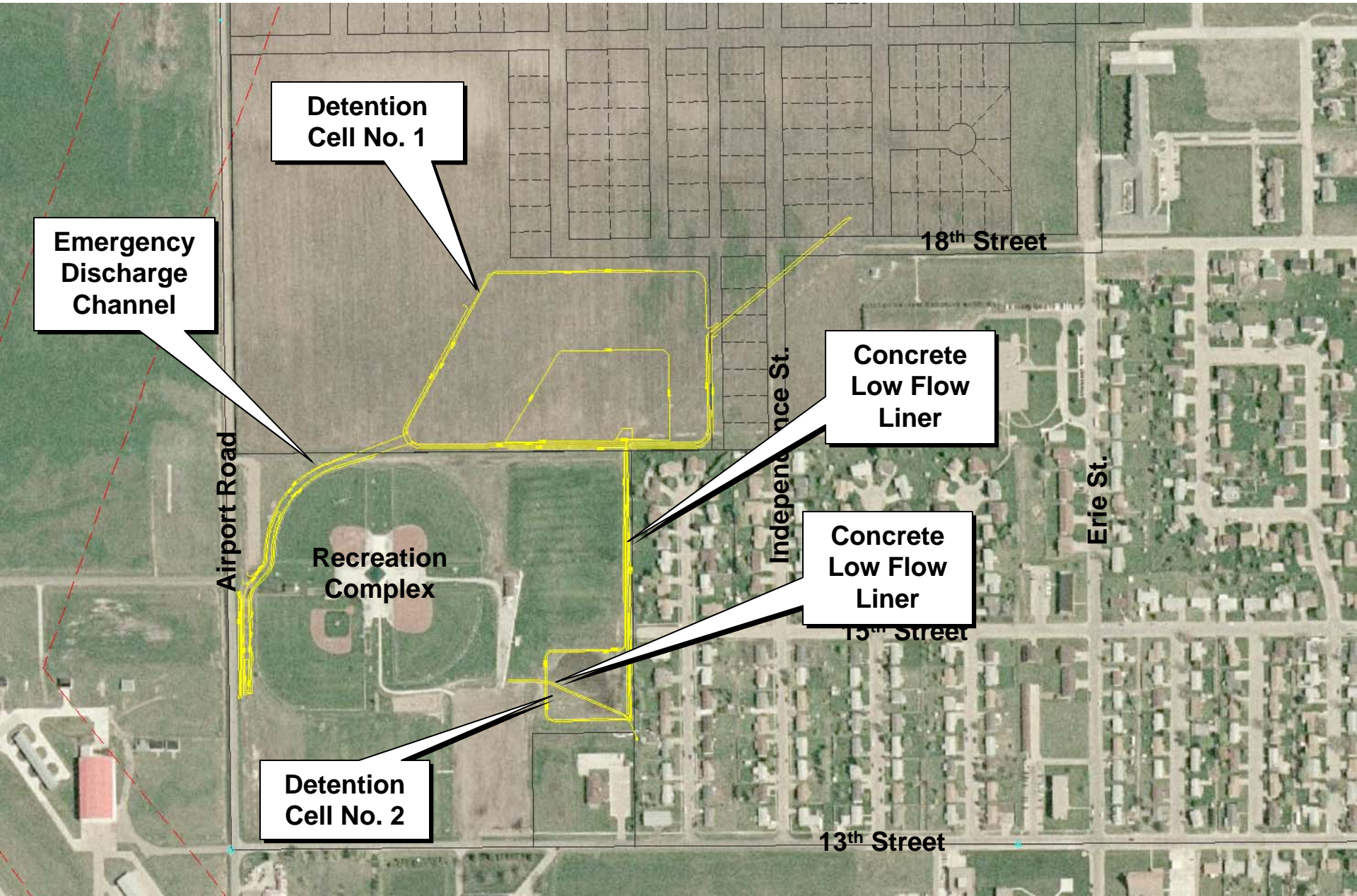


# Detention Cells & Channel Construction



**Detention Cell No. 1**

**Emergency Discharge Channel**

18<sup>th</sup> Street

**Concrete Low Flow Liner**

Independence St.

Erie St.

**Recreation Complex**

**Concrete Low Flow Liner**

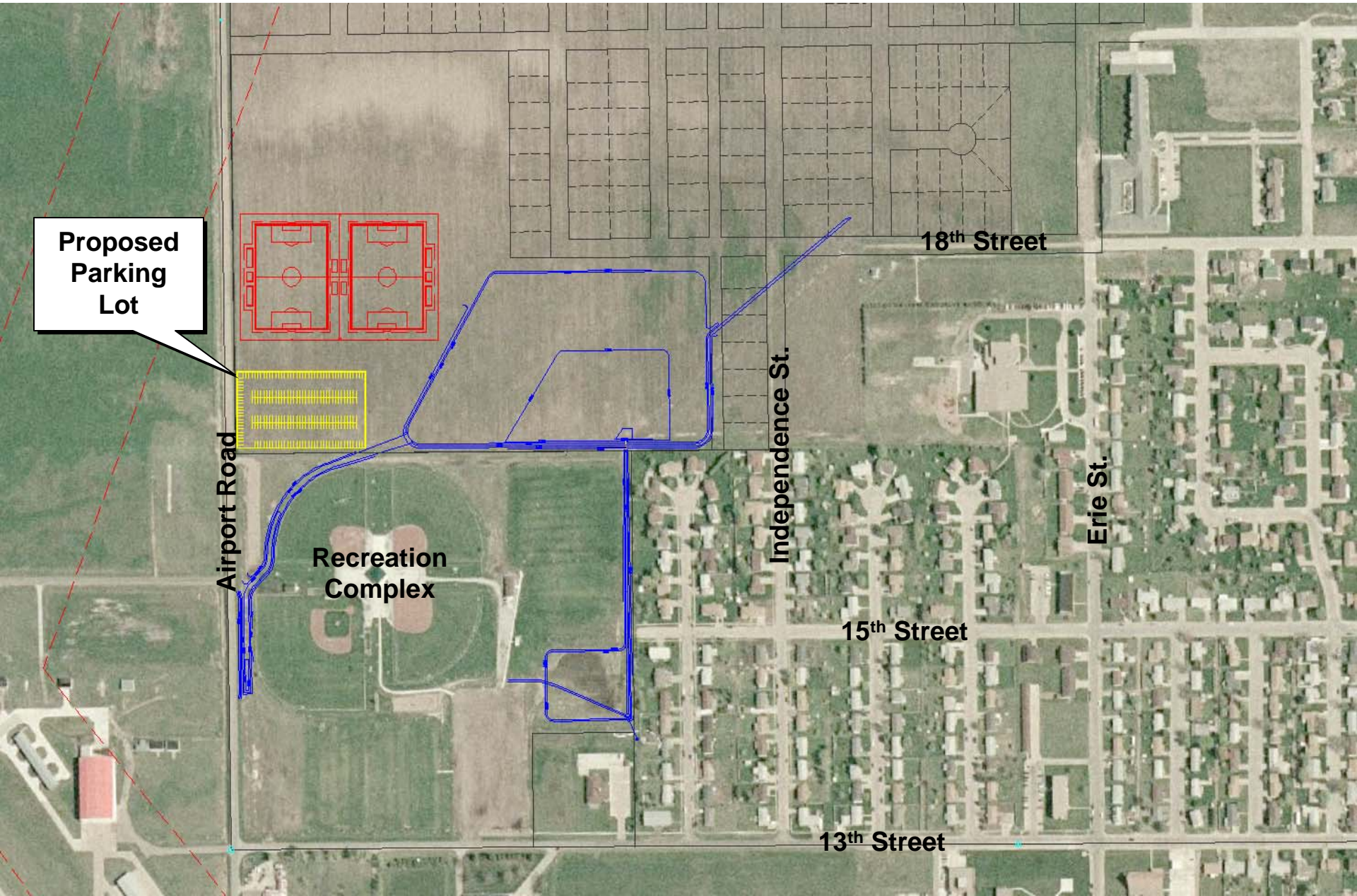
15<sup>th</sup> Street

**Detention Cell No. 2**

13<sup>th</sup> Street



# Additional Parking Lot



**Proposed  
Parking  
Lot**

**Airport Road**

**Recreation  
Complex**

**18<sup>th</sup> Street**

**Independence St.**

**Erie St.**

**15<sup>th</sup> Street**

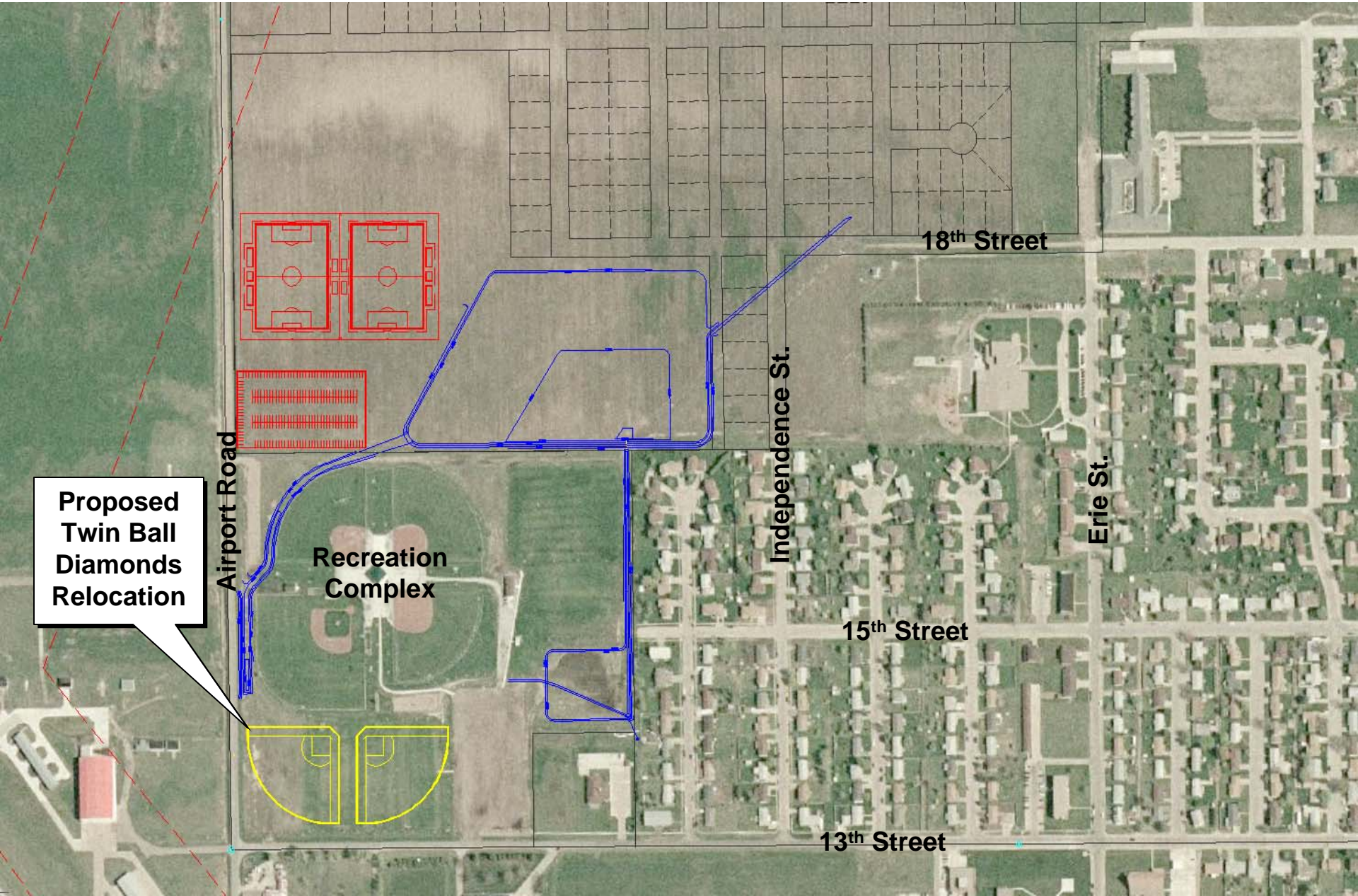
**13<sup>th</sup> Street**



# Twin Ball Diamonds Relocation



Prepared By:  
**Miller & Associates**  
Consulting Engineers, P.C.



**Proposed  
Twin Ball  
Diamonds  
Relocation**

**Airport Road**

**Recreation  
Complex**

**Independence St.**

**Erie St.**

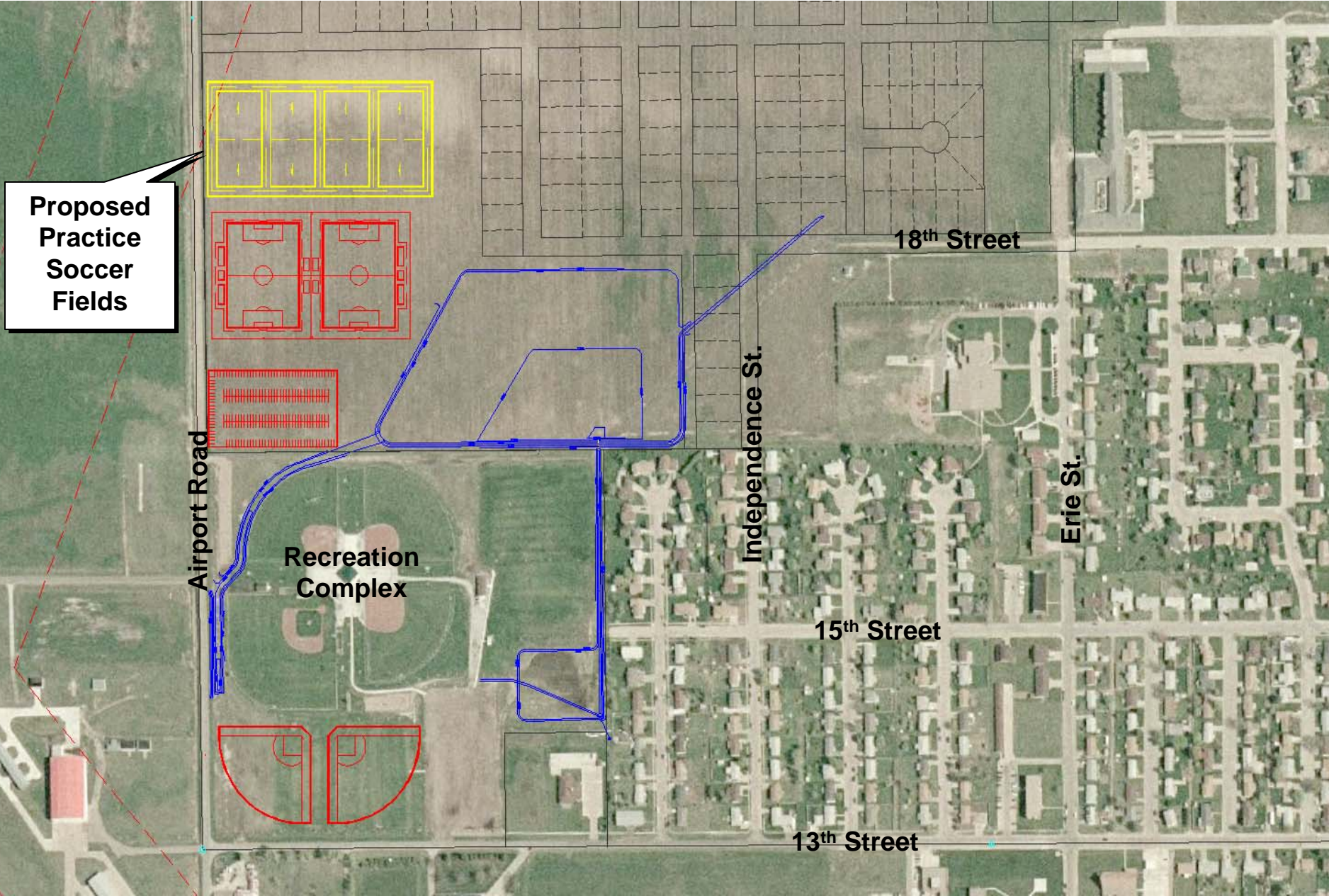
**18<sup>th</sup> Street**

**15<sup>th</sup> Street**

**13<sup>th</sup> Street**

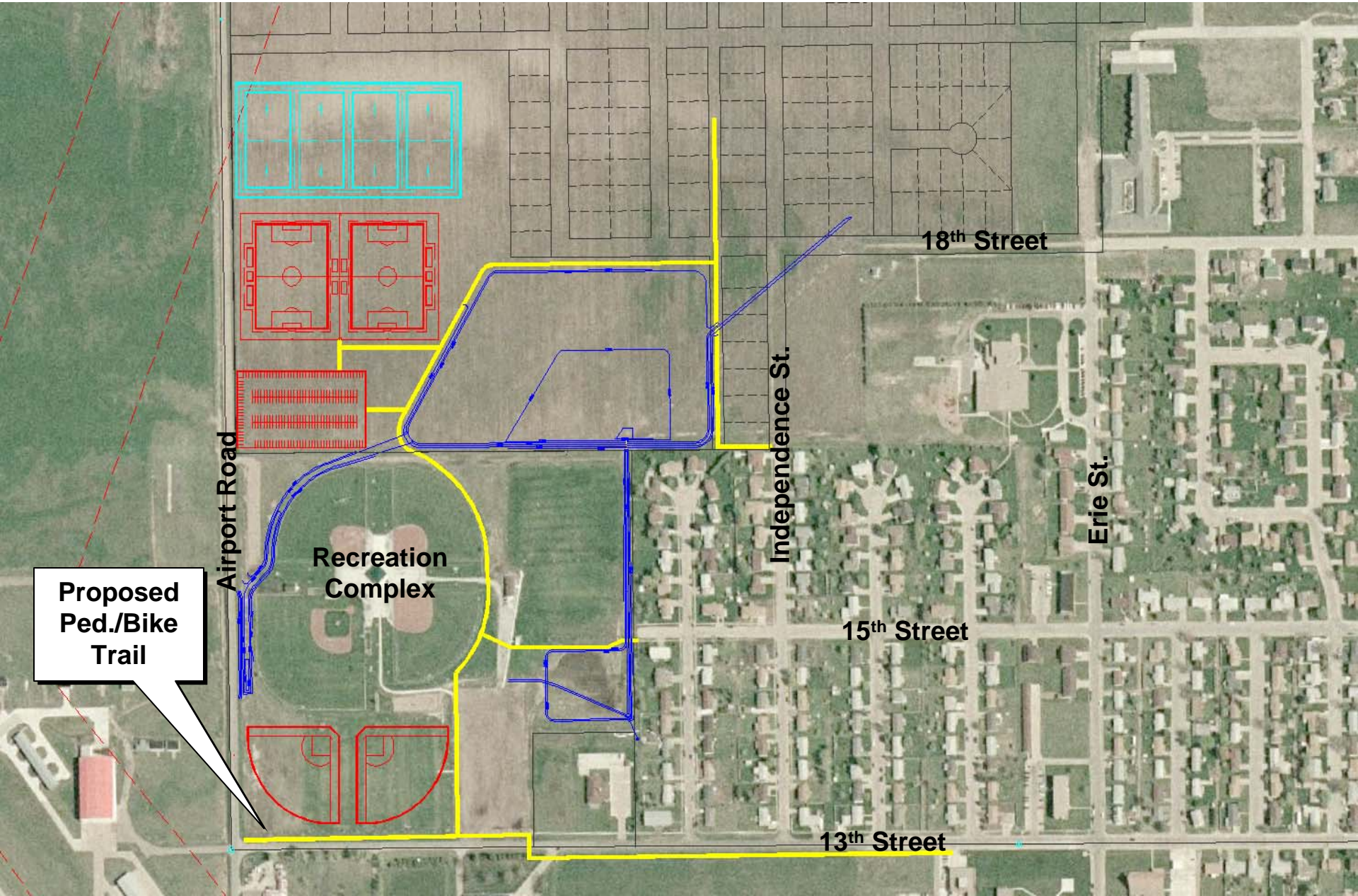


# Additional Soccer Practice Area





# Proposed Pedestrian/Bike Trail



**Proposed  
Ped./Bike  
Trail**

**Airport Road**

**Recreation  
Complex**

**18<sup>th</sup> Street**

**Independence St.**

**Erie St.**

**15<sup>th</sup> Street**

**13<sup>th</sup> Street**