

**13<sup>th</sup> Street**

**Paving & Hike / Bike Trail  
Improvements**

SECTION 36, T10N, R22W

SECTION 31, T10N, R21W

AIRPORT ROAD

ADAMS STREET

15TH STREET

ERIE STREET

13TH STREET

**PROJECT LOCATION**

PARK STREET

SECTION 1, T9N, R22W

SECTION 6, T9N, R21W

10TH STREET

US HIGHWAY NO. 30

UNION PACIFIC RAILROAD

Prepared By:



**Miller Associates**  
CONSULTING ENGINEERS, P.C.  
Kearney, NE - (308) 234-6456

Prepared By:



**Miller Associates**  
CONSULTING ENGINEERS, P.C.  
Kearney, NE – (308) 234-6456

**Airport Road**

**Project  
Location**

**15<sup>th</sup> Street**

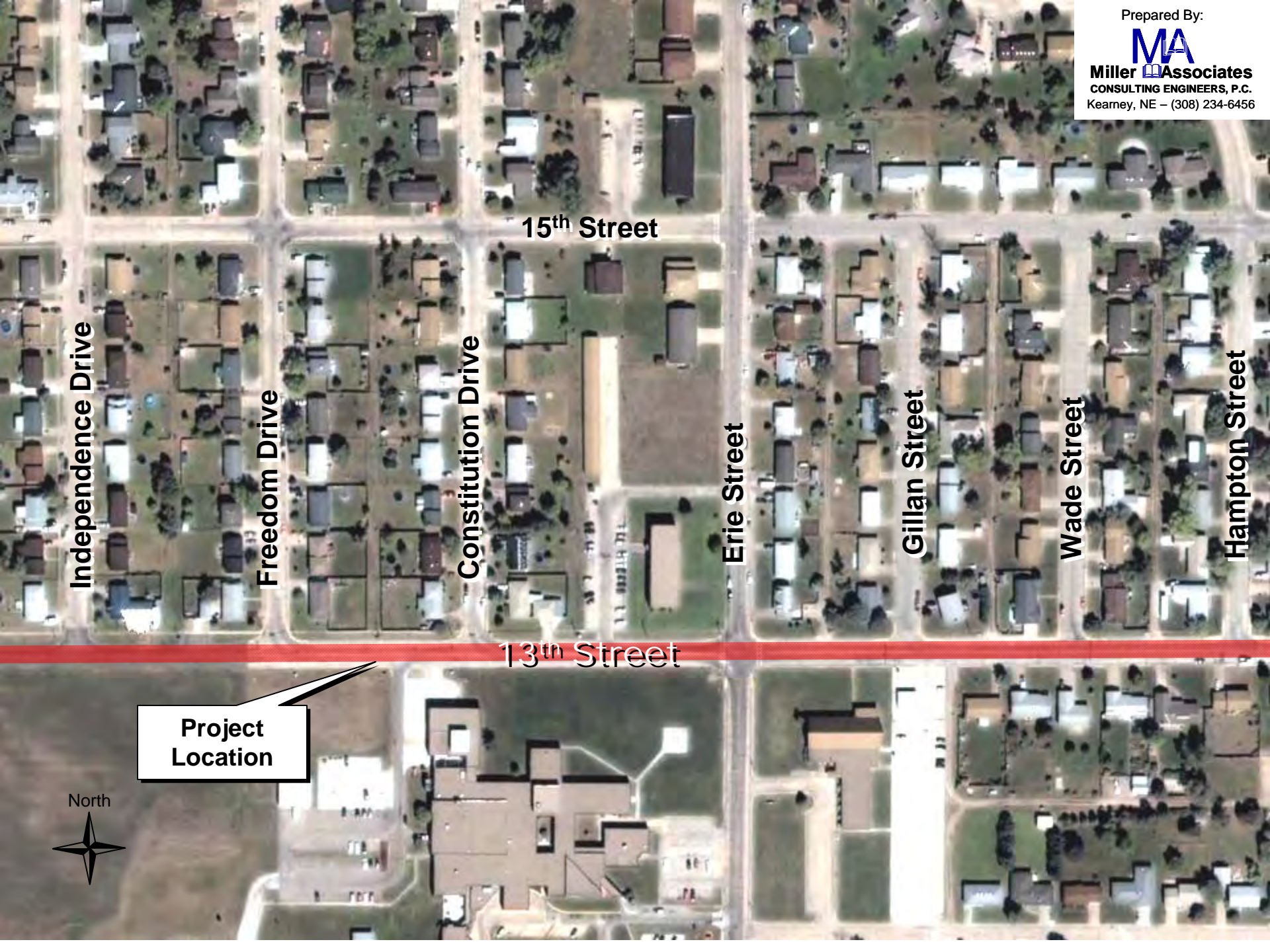
**Liberty Drive**

**Independence Drive**

**13<sup>th</sup> Street**

North





15th Street

Independence Drive

Freedom Drive

Constitution Drive

Erie Street

Gillan Street

Wade Street

Hampton Street

13th Street

Project Location

North





**Erie Street**

**Gillan Street**

**Wade Street**

**Hampton Street**

**Park Street**

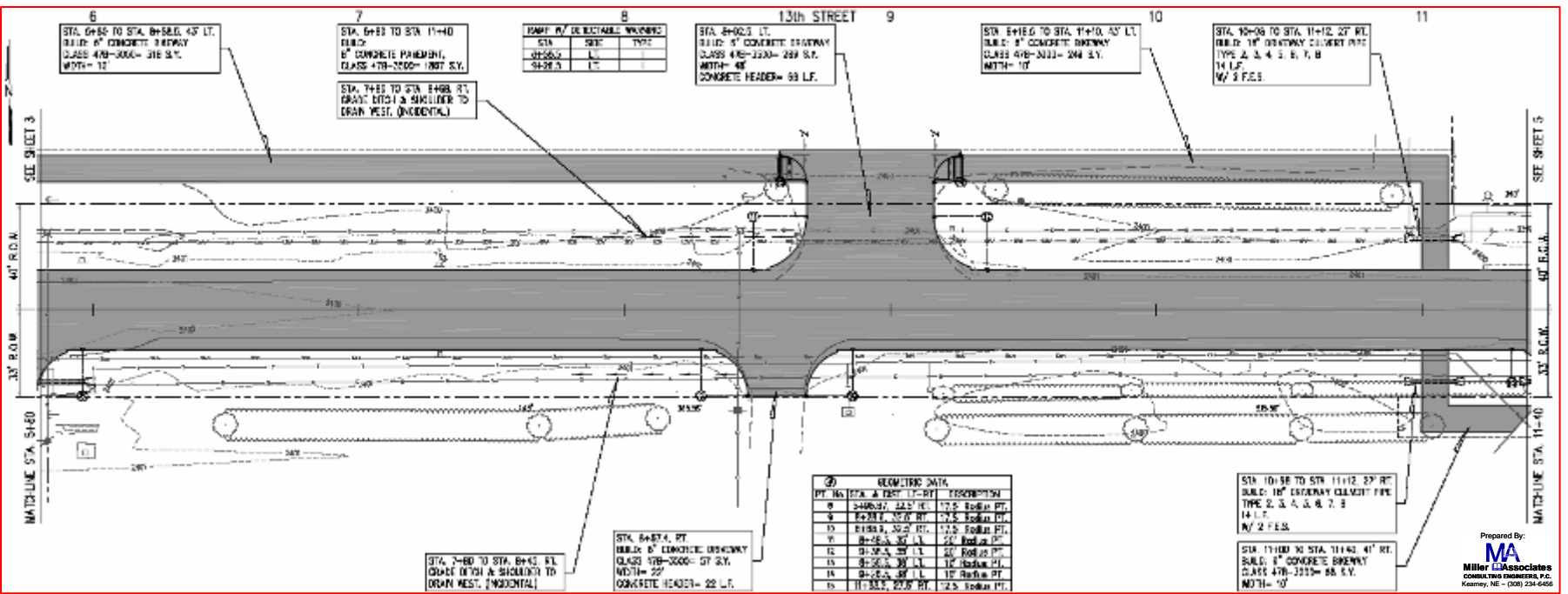
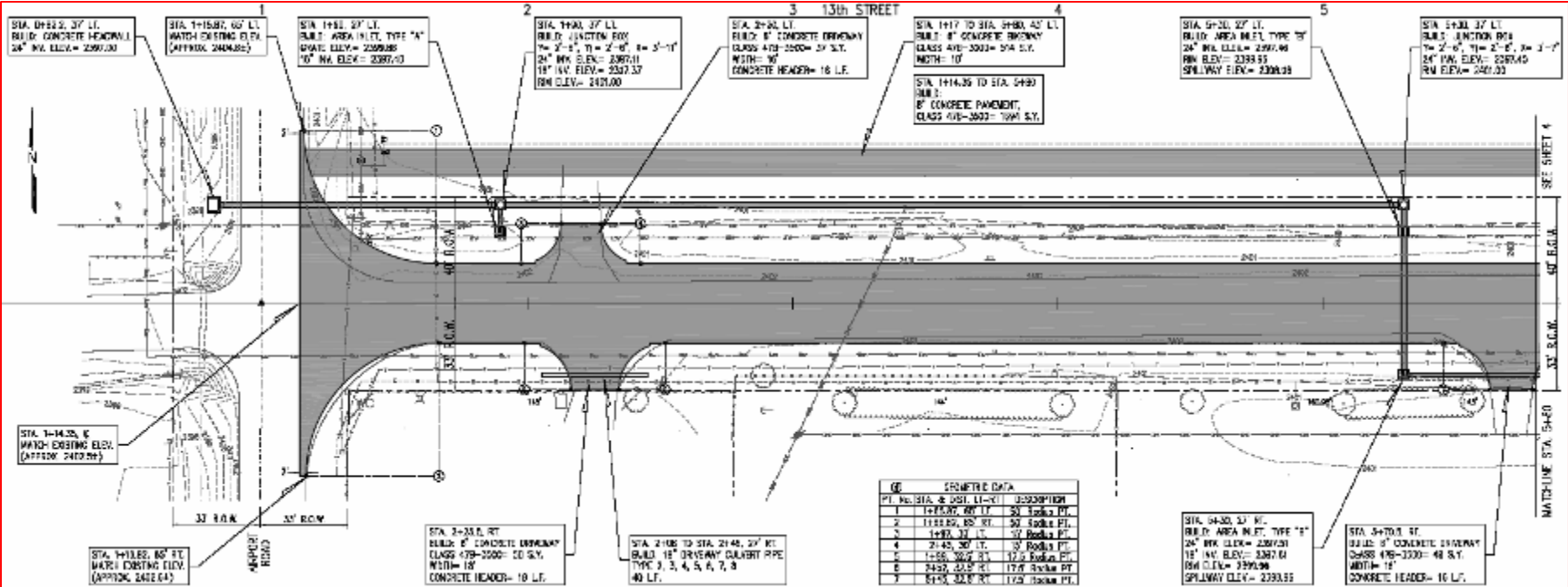
**15<sup>th</sup> Street**

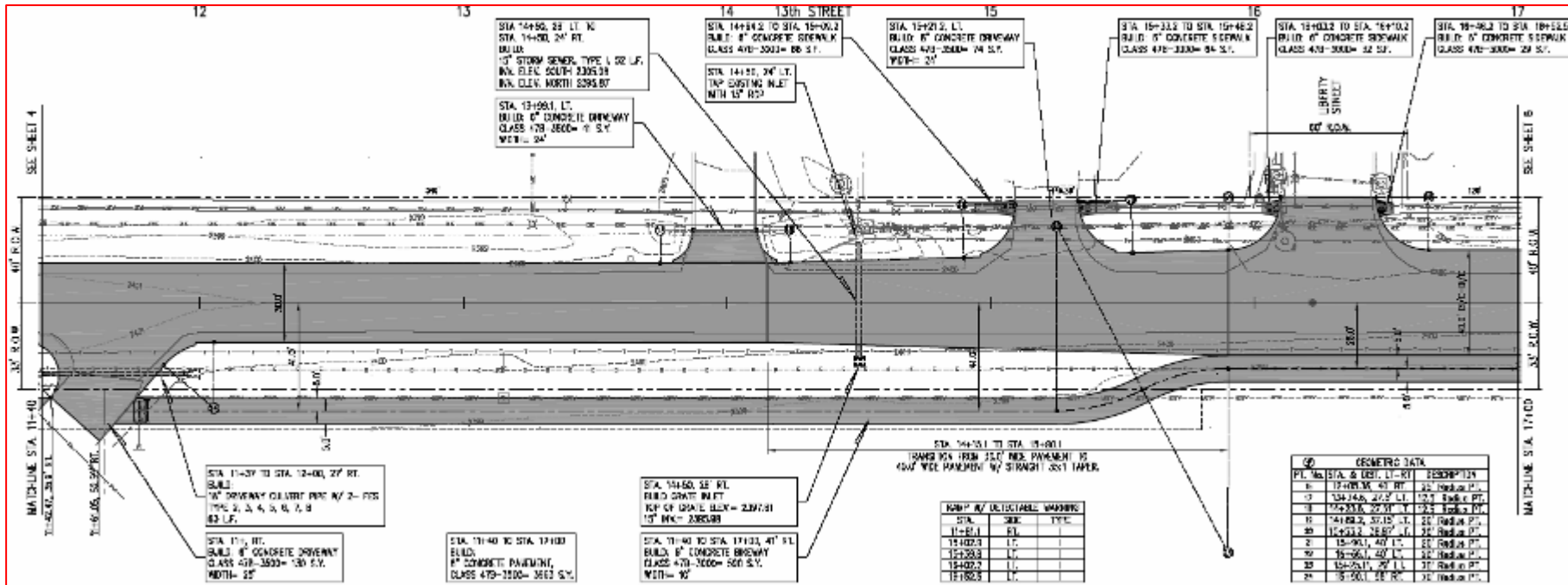
**13<sup>th</sup> Street**

**Project Location**

North







STA. 11+00 TO STA. 12+00, 27" RT. BUILD 8" CONCRETE CURB/RET. WALL TYPE 2, 3, 4, 5, 6, 7, 8 60 L.F.

STA. 11+00, RT. BUILD 8" CONCRETE DRIVEWAY CLASS 478-3000-130 S.Y. WIDTH= 25'

STA. 11+40 TO STA. 11+00 BUILD 8" CONCRETE PAVEMENT, CLASS 479-3000-3602 S.Y.

STA. 11+50, SE. RL. BUILD DRIVE INLET TOP OF GRADE 100'-0" 10' WIDE 2300.00

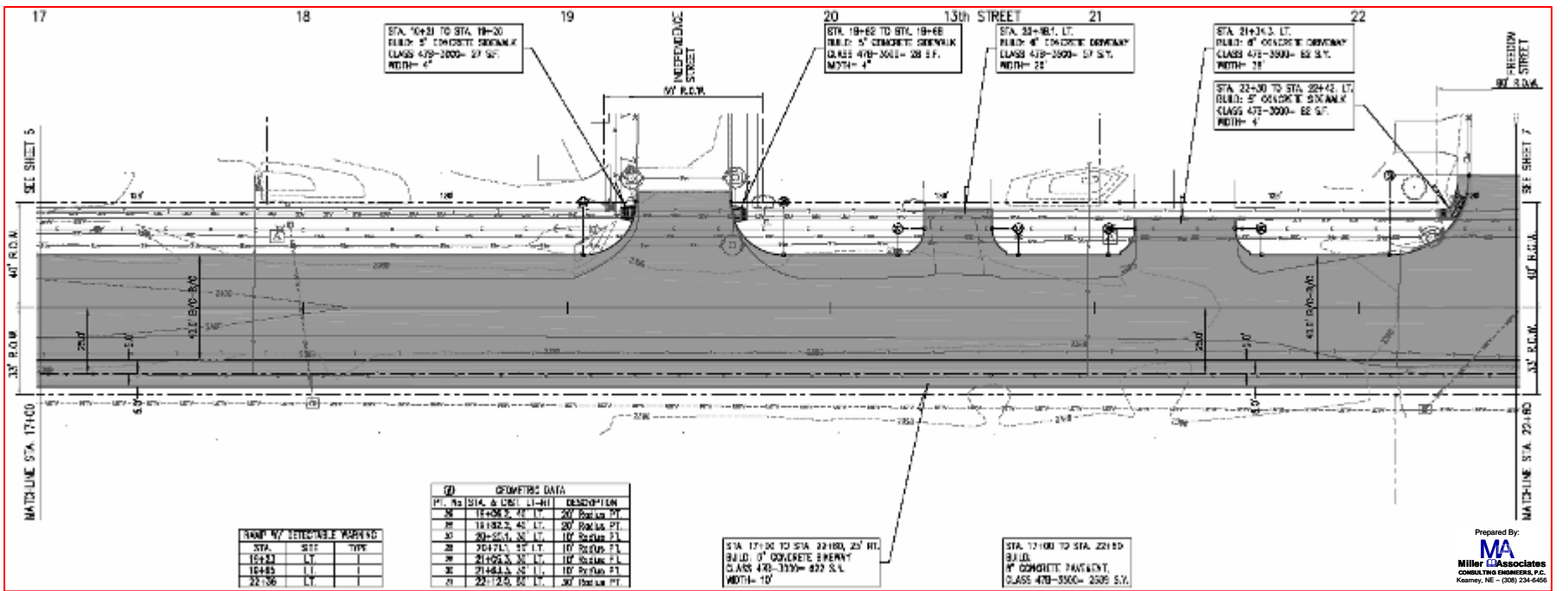
STA. 11+40 TO STA. 11+00, 40' RT. BUILD 8" CONCRETE DRIVEWAY CLASS 478-3000-130 S.Y. WIDTH= 10'

NAME BY DETECTABLE MARKING

STA.	SIZE	TYPE
11+51.1	5"	RT.
11+02.3	1"	
11+28.3	1"	
11+02.7	1"	
11+02.3	1"	

GEOMETRIC DATA

PI. No	STA. & DIST. LT.-RT.	DESCRIPTION
1	11+00.00, 0.00 RT.	20' Radius PT.
2	11+00.00, 2.00 LT.	10' Radius PT.
3	11+00.00, 20.00 RT.	20' Radius PT.
4	11+00.00, 37.15 LT.	20' Radius PT.
5	11+00.00, 38.87 LT.	20' Radius PT.
6	11+00.00, 40.00 LT.	20' Radius PT.
7	11+00.00, 40.00 LT.	20' Radius PT.
8	11+00.00, 20.00 RT.	20' Radius PT.
9	11+00.00, 0.00 RT.	20' Radius PT.



STA. 18+20 TO STA. 18+00 BUILD 5" CONCRETE SIDEWALK CLASS 479-3000-37 SF. WIDTH= 4'

STA. 19+60 TO STA. 19+60 BUILD 5" CONCRETE SIDEWALK CLASS 479-3000-37 SF. WIDTH= 4'

STA. 20+00, LT. BUILD 8" CONCRETE DRIVEWAY CLASS 478-3000-130 S.Y. WIDTH= 25'

STA. 21+30, LT. BUILD 8" CONCRETE DRIVEWAY CLASS 478-3000-130 S.Y. WIDTH= 25'

STA. 22+30 TO STA. 22+42, LT. BUILD 5" CONCRETE SIDEWALK CLASS 479-3000-37 SF. WIDTH= 4'

NAME BY DETECTABLE MARKING

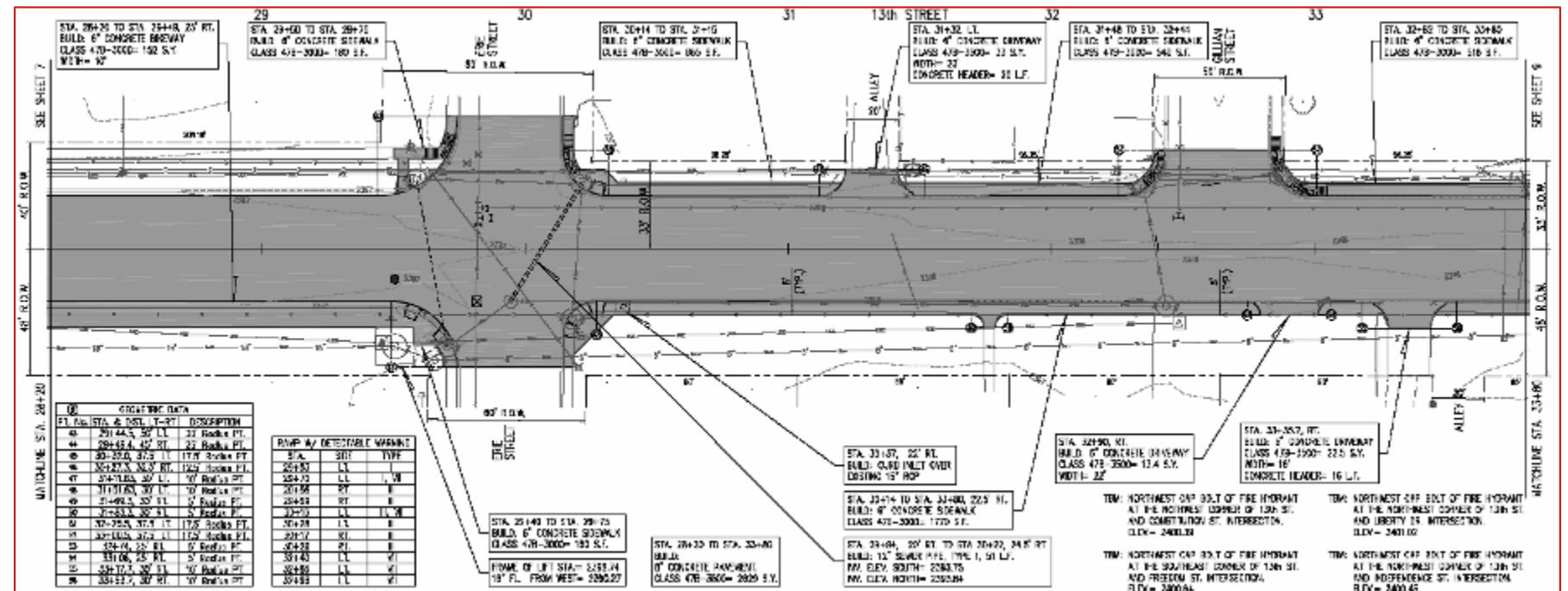
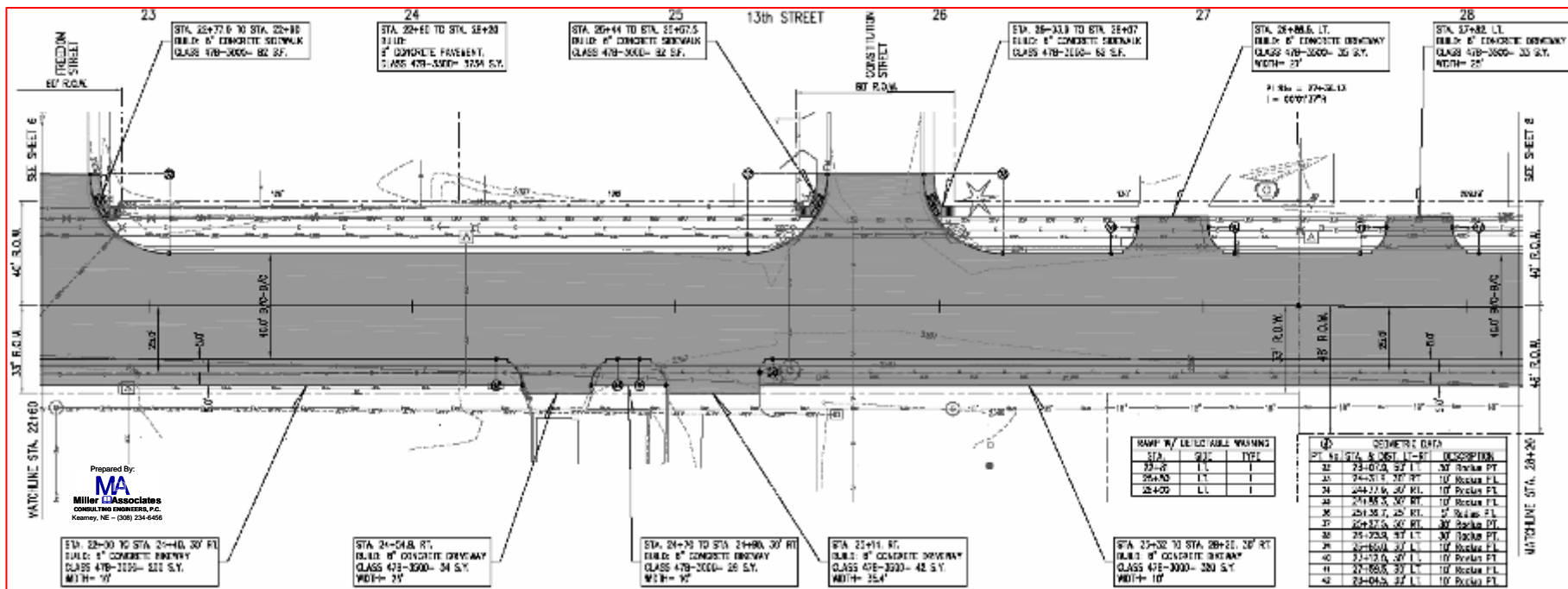
STA.	SIZE	TYPE
17+03	1"	
16+48	1"	
22+36	1"	

GEOMETRIC DATA

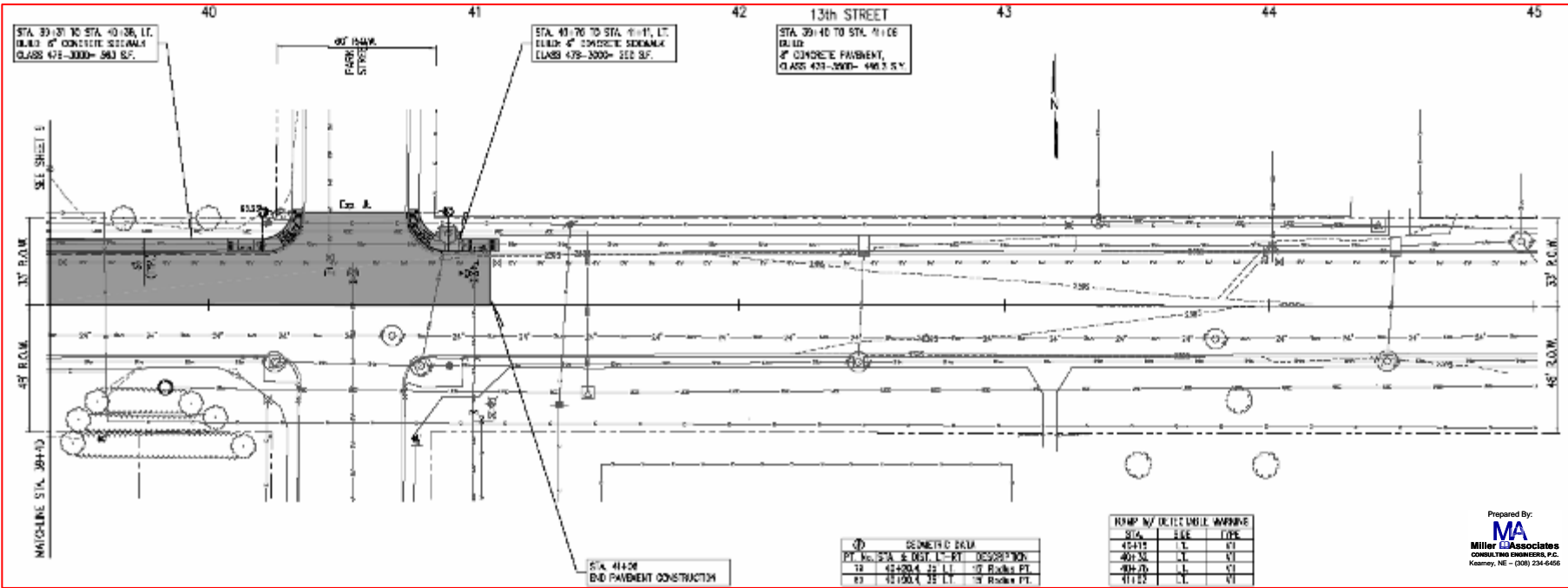
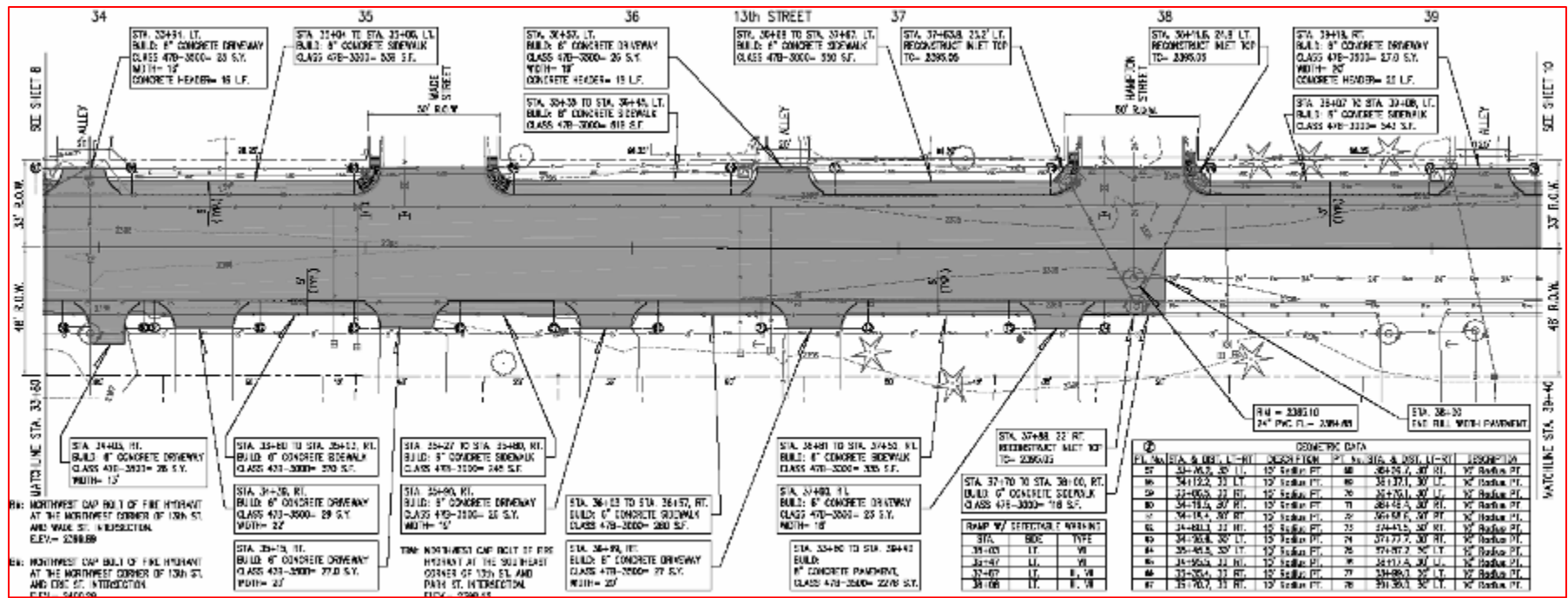
PI. No	STA. & DIST. LT.-RT.	DESCRIPTION
10	11+00.00, 0.00 RT.	20' Radius PT.
11	11+00.00, 2.00 LT.	10' Radius PT.
12	11+00.00, 20.00 RT.	20' Radius PT.
13	11+00.00, 37.15 LT.	20' Radius PT.
14	11+00.00, 38.87 LT.	20' Radius PT.
15	11+00.00, 40.00 LT.	20' Radius PT.
16	11+00.00, 40.00 LT.	20' Radius PT.
17	11+00.00, 20.00 RT.	20' Radius PT.
18	11+00.00, 0.00 RT.	20' Radius PT.

STA. 17+00 TO STA. 22+00, RT. BUILD 8" CONCRETE DRIVEWAY CLASS 478-3000-130 S.Y. WIDTH= 10'

STA. 17+00 TO STA. 22+00 BUILD 8" CONCRETE DRIVEWAY CLASS 478-3000-130 S.Y.







GEOMETRIC DATA

PT. NO.	STA. & MEAS. L.-RT.	DESCRIPTION	PT. NO.	STA. & MEAS. L.-RT.	DESCRIPTION
57	33+00.00 20' LT.	10' Radius PT.	58	34+00.00 20' RT.	10' Radius PT.
58	34+122.22 11' LT.	10' Radius PT.	59	34+122.22 11' LT.	10' Radius PT.
59	34+00.00 20' RT.	10' Radius PT.	60	34+122.22 11' LT.	10' Radius PT.
60	34+122.22 11' LT.	10' Radius PT.	61	34+122.22 11' LT.	10' Radius PT.
61	34+122.22 11' LT.	10' Radius PT.	62	34+122.22 11' LT.	10' Radius PT.
62	34+122.22 11' LT.	10' Radius PT.	63	34+122.22 11' LT.	10' Radius PT.
63	34+122.22 11' LT.	10' Radius PT.	64	34+122.22 11' LT.	10' Radius PT.
64	34+122.22 11' LT.	10' Radius PT.	65	34+122.22 11' LT.	10' Radius PT.
65	34+122.22 11' LT.	10' Radius PT.	66	34+122.22 11' LT.	10' Radius PT.
66	34+122.22 11' LT.	10' Radius PT.	67	34+122.22 11' LT.	10' Radius PT.
67	34+122.22 11' LT.	10' Radius PT.	68	34+122.22 11' LT.	10' Radius PT.

RAMP W/ DEFLECTOR WARRANT

STA.	DESC.	TYPE
34+00	LT.	W
34+07	LT.	W
34+07	LT.	E, W
34+08	LT.	E, W

GEOMETRIC DATA

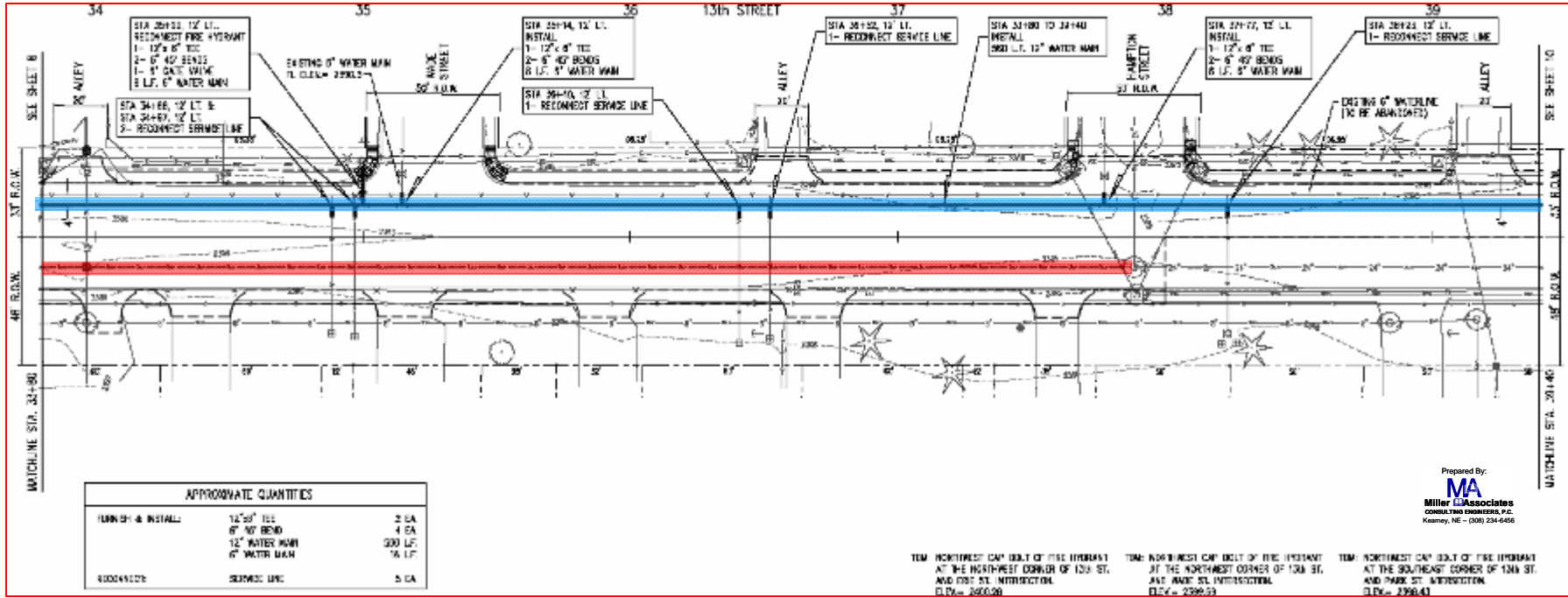
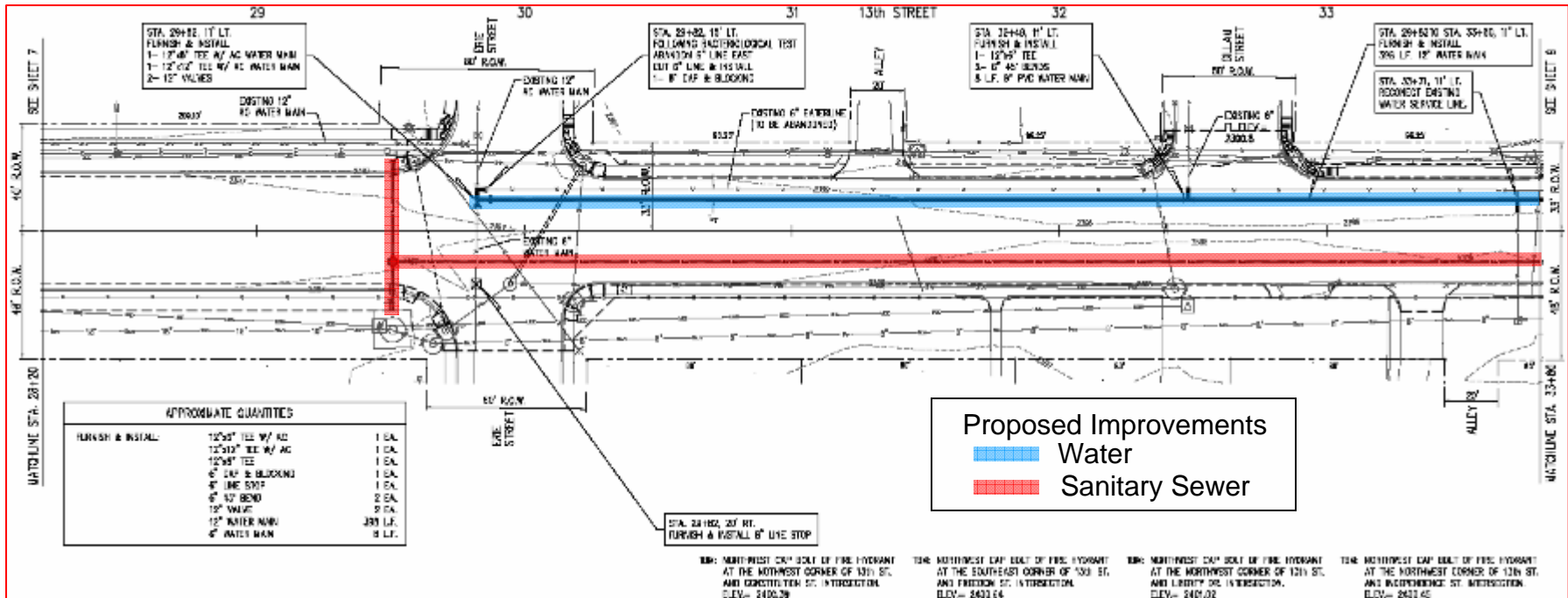
PT. NO.	STA. & MEAS. L.-RT.	DESCRIPTION
78	43+00.00 25' LT.	10' Radius PT.
87	43+00.00 25' LT.	10' Radius PT.

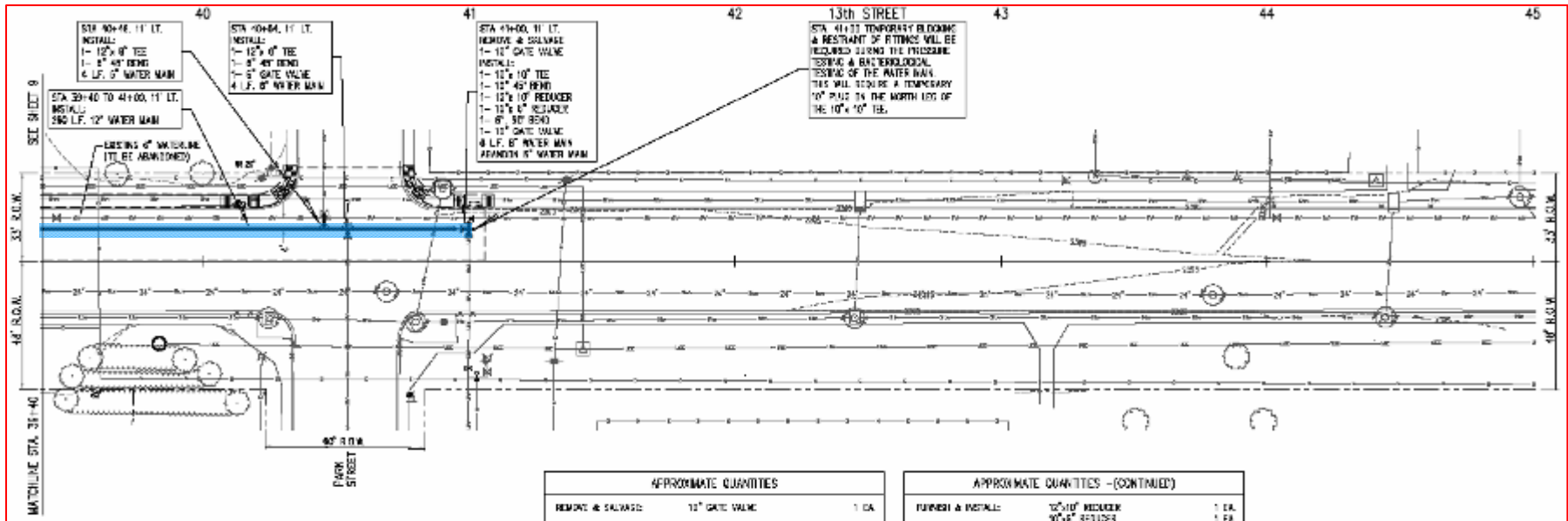
RAMP W/ DEFLECTOR WARRANT

STA.	DESC.	TYPE
43+00	LT.	W
43+07	LT.	W
43+07	LT.	E, W
43+08	LT.	E, W

**13<sup>th</sup> Street**

**Water and Sanitary Sewer  
Improvements**





APPROXIMATE QUANTITIES		
REMOVE & SALVAGE	12" GATE VALVE	1 EA
FINISH & INSTALL	12" Tee	2 EA
	12" 45° BEND	1 EA
	6" 90° BEND	2 EA
	12" 45° BEND	1 EA

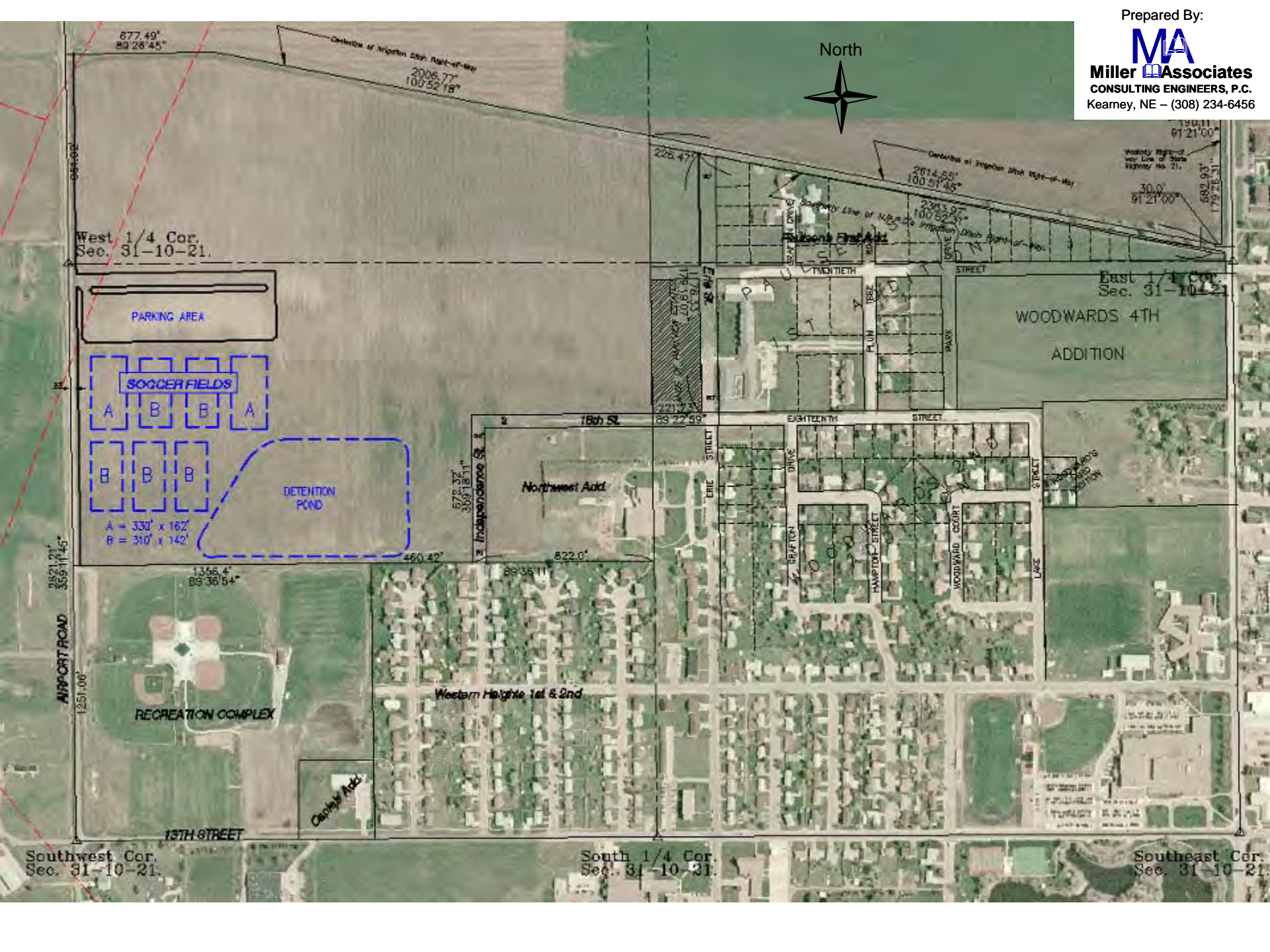
APPROXIMATE QUANTITIES - (CONTINUED)		
FINISH & INSTALL	10" 10" REDUCER	1 EA
	10" 6" REDUCER	1 EA
	6" GATE VALVE	1 EA
	10" GATE VALVE	1 EA
	12" WATER MAIN	280 L.F.
	8" WATER MAIN	14 L.F.

Prepared By:  
**MA**  
 Miller Associates  
 CONSULTING ENGINEERS, P.C.  
 Kearney, NE - (402) 234-6565

# Northwest Storm Water Detention Improvements



North



West 1/4 Cor.  
Sec. 31-10-21.

East 1/4 Cor.  
Sec. 31-10-21

WOODWARDS 4TH  
ADDITION

Northwest Add.

RECREATION COMPLEX

Western Heights 1st & 2nd

Southwest Cor.  
Sec. 31-10-21.

South 1/4 Cor.  
Sec. 31-10-31.

Southeast Cor.  
Sec. 31-10-21.

AIRPORT ROAD

13TH STREET

18th St

EIGHTEENTH STREET

ERIE STREET

SPRAFTEN DRIVE

HAMPTON STREET

WOODWARD COURT

LAKE STREET

Campbell Add.

677.49°  
89°28'45"

2006.77°  
100°52'18"

2614.55°  
100°51'45"

190.11°  
81°21'00"

30.0°  
81°21'00"

689.93°  
178°25'31"

226.47°

1176.83°  
106°1'24"

2213.43°

83°22'59"

572.37°  
369°18'11"

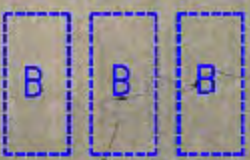
822.0°

89°35'11"

1356.4°  
89°38'54"

2821.21°  
369°11'45"

North



A = 330' x 162'  
B = 310' x 142'



Independence St.

18th St.

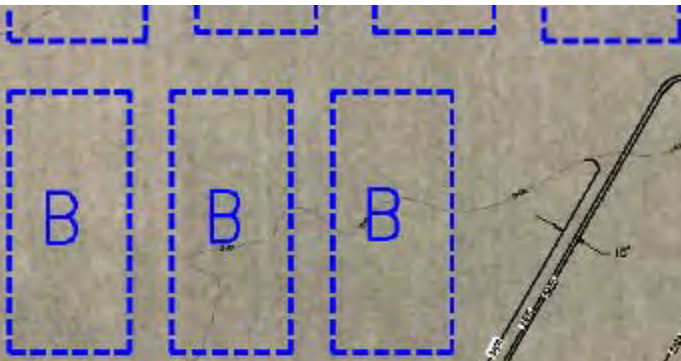
Erie St.

Paulsen's First Add.

Northwest Add.

Western Heights 1st & 2nd

PRISM  
ORIGINAL  
FINAL  
CUT COM  
FILL COM  
RAW CUT  
COMPACT  
TOTAL C  
RAW FILL  
COMPACT  
TOTAL F  
TEN: BR  
NO  
ELE  
TEN: NO  
AT  
ELE  
TEN: NO



A = 330' x 162'  
B = 310' x 142'

AIRPORT ROAD

RECREATION COMPLEX

Independence S

Western Heights