

# City Happenings

LEAP  
DAY



February 2024

#105



## “The Vintage Row” Taking Shape on Liberty Drive



On the west side of Liberty Drive, just south of West 13th Street, there are a lot of buildings going up.

When completed, “The Vintage Row” will create 35 new residential units. All units will be rentals and limited to tenants 55 years or older, an arrangement used for the duplexes already completed on the east side of Liberty Drive.

The area is being developed as a senior neighborhood with green space, trails, landscaping, a pond, a clubhouse and other recreational facilities.

Stay tuned for further information as this phase of development is completed.





## Library News

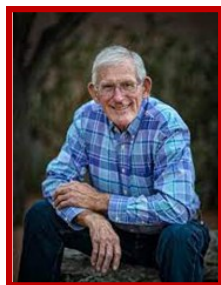


907 N Washington  
(308) 324-2151



by Jennifer Norton  
Library Director

*"Books are my friends, my companions. They make me laugh and cry and find meaning in life." - Christopher Paolini (American Author)*



The **Kearney Area Storytelling Festival** is coming to the Lexington Public Library on Tuesday,

February 6 at 5:30 p.m. This family-friendly event is FREE and open to the public. Enjoy storytelling by Spanish/English storyteller **Joe Hayes**. Stories, fun, and refreshments will be available at this wonderful program for all ages.



**Adult Board Game Night** at the Lexington Public Library is every 2nd Tuesday of the month from 6-8 p.m. Enjoy games and refreshments while socializing and having fun. Play games provided by the library or bring a favorite from home to share. Ages 20+ are welcome. Join us February 13, March 12, and April 9 for games @ Your Lexington Public Library.



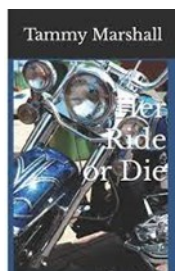
The **Friends of the Library and Mom-mies Club** are hosting a **Pi Day**

fund-raising event on March 14. Support the groups that support the Lexington Public Library by buying a slice of pie (\$3.14) at the library from 11 a.m. until the pie is gone. Free coffee and conversation are available too!



**Booked For Lunch** on Friday, March 22, will feature Nebraska author **Tammy**

**Marshall**. Join us for lunch and a presentation by Marshall in which she will discuss her most recent book, "Her Ride or Die." A retired high



school teacher, speech and drama coach, Marshall has four other books to her credit and calls Neligh, Nebr., home. Please call the library to reserve your spot.



Come enjoy a series of **Humanities Nebraska** programs in April, all about **The Ladies of Nebraska Literature**.

- Thursday, April 4: "The Life and Drive of Mari Sandoz" presented by **Peg Gilbert**
- Thursday, April 11: "Bess Streater Aldrich: In Her Own Words" presented by **Jolene McLaughlin**
- Thursday, April 18: "Willa Cathers Life in Letters" presented by **Andrew Jewell**.

All programs begin at 7 p.m. and are FREE and open to the public.

*(Library News continues on next page)*



Like us on Facebook



## HONOR A VETERAN WITH THIS LASTING TRIBUTE

Thanks to the Lexington Veterans Memorial Committee, you now have the opportunity to purchase a commemorative brick which can be inscribed in honor or in memory of a veteran. The bricks will be installed on the Veterans Pavilion Memorial Wall at the south end of Kirkpatrick Memorial Park.



The process is simple: fill out the form at <https://donate.brickmarkers.com/lex>, (or use the QR code above) and remit your payment. All the helpful details are at the website.

Thank you for supporting our local heroes!



## Library News

*(continued from previous page)*

The inaugural **One Book, One Lexington** program launches in February 2024. Coinciding with Lexington's sesquicentennial, the program will feature book discussions, special programs, and a visit by the author in June as the community celebrates its 150th birthday. Multiple copies of the selected title, "Running Dreams" by **Carlos R. Serván** are available to the public for check out.



## The Inaugural One Book, One Lexington 2024

*Running Dreams: An Immigrant's hurdles and triumphs, after blindness and amputation by Carlos R. Serván*



Mr. Serván presently directs the Nebraska Commission for the Blind. He lives in Lincoln, NE.

Events planned throughout the year.

- \*Book discussions
- \*Speakers
- \*Programs



907 N. Washington St.  
Lexington, NE 68850  
308.324.2151



**SUMMER JOBS** - Temporary Seasonal Workers, Part-time

**APPLY NOW!**

Positions available include:

- Concession Workers (age 14+)
- Lifeguards (age 15+)
- City Park and Cemetery Maintenance (age 16+)

The City of Lexington is an Equal Opportunity Employer. Download an application from the city website, [www.cityoflex.com/human-resources/](http://www.cityoflex.com/human-resources/).

Remember, you're not just fertilizing your lawn



### Fertilize sparingly and caringly

#### Green your lawn, not the river

Storm drains found in our streets and yards lead directly to our lakes and streams. So, fertilizer from your lawn can easily end up in our water. This fertilizer can form large algae blooms and use up oxygen that fish and other aquatic insects need to survive.

#### What can you do? Simple:

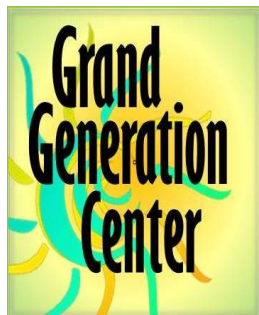
- Sweep fertilizer off of driveways and sidewalks and back onto your lawn.
- Recycle grass clippings by leaving them on your lawn.
- Use fertilizer with low phosphorus.
- Select a slow-release fertilizer where at least half of the nitrogen is water insoluble (check the label).

**Keep the green on the lawn and in your pocket!**

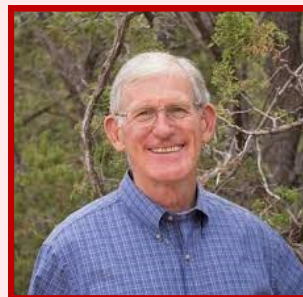


Support provided by Nebr. Dept. of Environment & Energy





## Storyteller Joe Hayes



**Thursday,  
February 8  
12:00 p.m.**

Join us for Bilingual Storyteller **Joe Hayes** on Thursday, February 8, at noon. Joe Hayes has been traveling up and down the country, back and forth, telling stories of the Southwest for more than 40 years. He was the pioneer of bilingual Spanish-English storytelling. Joe has published more than 25 books, many in both English and Spanish. Joe has delighted and inspired children in thousands of schools and was the resident storyteller at the Wheelwright Museum of the American Indian in Santa Fe for 39 years. Many parents and teachers of today's kids heard Joe's tales when they were children.

## GGC Happenings

407 East 6th Street

## Annual Cake Decorating & Auction

**Thursday & Friday, February 8 & 9**



Join us for the return of our cake decorating day on Thursday, February 8, at 2:00 p.m. We will provide the cakes and different-colored frosting and invite you to bring any decorative items you might want to use. Due to space limitations, we ask that you refrain from using anything that may need refrigeration. Teams can be made up of 1-2 people from any group, business, or organization. Cakes will be displayed & up for silent auction bid from 9 a.m. to 2 p.m.

on Friday, February 9. Pick-up is from 2 to 5 p.m. following the silent auction. Proceeds from the silent auction go to the GGC Support Group fund. Please call 308-324-2498 to reserve your cake at no cost.



International Women's Day is a global day celebrating the social, economic, cultural and political achievements of women. International Women's Day has been held every March 8 since 1911.

#IWD2024 #BreakTheBias



**What Not To Flush**  
(or put down the drain)  
**Could clog your drains or sewers!**



- ▶ paper, plastic or cardboard
- ▶ feminine hygiene products
- ▶ wipes (baby or personal)
- ▶ prophylactic items
- ▶ cloth or string
- ▶ grease, oil, wax or fats
- ▶ diapers
- ▶ wrappers
- ▶ bottles
- ▶ cat litter
- ▶ medicines

**WE ASK OUR CUSTOMERS**

**DO NOT DEPOSIT IN TRASH DUMPSTERS:**

- yard waste • tree branches • wood • cement • iron • batteries and tires . . .

. . . as the landfill will not accept these items.

**YOUR DUMPSTER IS FOR YOUR HOUSEHOLD TRASH ONLY**

If you have a curbside trash container, DO NOT place trash in large alley dumpsters. These are for alley customers only.

If your curbside trash container fills before the weekly pickup, please call for additional containers.

DO NOT under any circumstances put hot BBQ coals or fireplace ashes in your dumpster. If you are caught doing this you will have to pay to replace the dumpster if fire occurs.

If you see someone using alley containers for construction materials, yard waste, or other unaccepted items, please call us right away and we will take care of it.

**Dan's Sanitation**

324-6693 • Lexington



Don't wait in line...  
**Pay Online**



Pay your utility bill using your computer, smart phone or tablet!  
Go to [www.cityoflex.com](http://www.cityoflex.com) to sign up and pay.

**Safe, Secure & Free!**



Optimized for mobile devices

- ★ Convenient: 24/7/365
- ★ Save time, postage and fuel
- ★ Pay by credit or debit card
- ★ View updated billing and consumption history
- ★ Account balances are automatically updated



**Like us on Facebook!**

Get the latest scoops about what's going on in Lexington!



Facebook users: be sure to search for "City of Lexington, Nebraska" (not to be confused with the generic page the Facebook folks created). Only our official page gives you the latest news and updates.

<https://www.facebook.com/pages/City-of-Lexington-Nebraska/157277430966096>





## EnergyWise Tip: **Healthy Lighting**



*by NPPD Energy Efficiency Program Manager Cory Fuehrer*

From introduction to capturing the majority of the market for residential lighting, no other energy efficient technology has been adopted more quickly than the light-emitting diode (LED) bulb. Before 2014, medium base, screw-in LEDs were nearly nonexistent due to their limited light output and very high cost. The U.S. Energy Information Administration’s 2015 Residential Energy Consumption Survey (RECS) reported that only 4% of households used LEDs for most or all of their indoor lighting. That year, the average cost of a 60-watt equivalent LED was \$15. When conducting the 2020 RECS, 47% reported using LEDs for most or all of their indoor lighting. At the start of 2021, the New York Times reported an average LED bulb costs around \$3.

Today, LEDs use an impressive 85% less energy than traditional incandescent bulbs with comparable light output. They also last up to

25 times longer. When purchased in a multipack, LEDs that replace 60-watt incandescent bulbs are about \$2 per bulb.

However, exposure to natural light is still necessary to maintain our health. “White” light is produced when all the colors of the spectrum combine in different proportions. Natural



sunlight has high concentrations from the blue portion of the spectrum during midday and very little during early morning and late afternoon hours. In contrast, almost all LEDs, including those used in bulbs and electronic displays are always rich in “blue light.”

Exposure to blue light suppresses our body’s

production of melatonin – a hormone responsible for establishing our sleep-wake cycles or circadian rhythm. When melatonin levels lower, we are awake and alert. As we spend more time at the end of our day exposed to blue light while watching television or using computers, notepads and cell phones, sleep disorders are becoming more prevalent. Studies have also linked excessive blue light exposure to myopia (short-sightedness), age-related macular degeneration, obesity, diabetes and Parkinson’s Disease, as well as depression. To offset these effects, many mobile devices now include features to reduce

the emission of blue light in the evening – and blue blocker glasses – that filter out such wavelengths are available.

However, filters are not enough. Dr. Martin Moore-Ede, director of the Circadian Light Research Center, recommends exposure to

*(continues on next page)*



## Healthy Lighting

*(continued from previous page)*

bright white light that is rich with blue light for at least 30 minutes during the early to midportion of our day. Then reduce or eliminate exposure to blue light at least one hour before bedtime. Consider taking lunch breaks outside, squeezing in a morning walk before work, or winding down on the patio at the end of the day.

Lexington Utilities System, in partnership with Nebraska Public Power District, want to help you save money while satisfying all of your illumination needs with reliable, low cost and sustainable energy. For more ideas or information about EnergyWise<sup>SM</sup> lighting incentives, contact Lexington Utilities System or visit [www.energywisenebraska.com](http://www.energywisenebraska.com).



LEXINGTON  
150  
YEARS  
1874 - 2024



 **KEY '24**  
AN EVENT UNLIKE ANY OTHER

**DINNER & AUCTION**  
SATURDAY, APRIL 13TH, 2024

**SAVE THE DATE**

PREVIEW NIGHT OPEN HOUSE  
FRIDAY, APRIL 12TH  
5:00 - 8:00PM

Prepaid Reservations Accepted  
Beginning Monday, October 2nd, 2023

Reserved, Limited Seating Only  
Individual Seats \$150  
Tables Seat Eight  
Credit Cards Accepted  
Semiformal Dress

LEXINGTON COMMUNITY FOUNDATION  
PO BOX 422 / 607 N WASHINGTON  
LEXINGTON, NE 68850  
(308) 324-6704  
OFFICE@LEXFOUNDATION.ORG







**We Want to Give You a Great Deal on Housing Lots**

- Ready to build!
- Open lots in East, Northeast, South and Northwest Neighborhoods
- \$0-\$5,000 each
- Dozens of sites to choose from
- Protective covenants in place
- Utilities on site (Electric, Sewer, Water)
- Sewer depths accommodate basements
- Lots sizes: approx. 11,000 - 25,000 square feet

**Contact  
Lexington  
City Manager  
308-324-2341**





- dispose of furniture, appliances, pallets, and other large items (small fee may apply)
- recycle paper, plastic, and cardboard
- pick up free wood chips or compost

**801 West Vine St.  
308-324-5995  
Mon. - Fri.  
8 a.m. - 4 p.m.**




**2024 Youth Tennis Registration  
Pre-K - 6th Grade**

**Instruction Dates: March 4, 11, 18, 25**

5:15 - 5:45 PM	Pre-K
5:45 - 6:30 PM	K - 2nd Grade
6:30 - 7:15 PM	3rd - 4th Grade
7:15 - 8:15 PM	5th - 6th Grade

Classes are FREE, but pre-registration is encouraged to help us know our numbers!

**Please pre-register by Friday, March 1**

**Event Address:** Lexington Fieldhouse  
1502 N Airport Road

**Contact Jake Saulsbury**  
308-746-3543 or jsaulsbury@cityolex.com

Limited supply of racquets available. Participants should do their best to bring their own racquet.





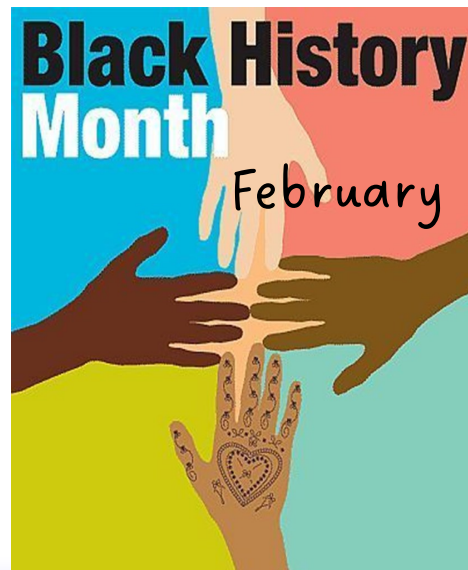
**LEXINGTON LEXUS UTILITIES SYSTEM**

## Tips to Prevent Frozen Pipes

- Leave Water Running** - Just a small, slow stream/trickle is usually enough to keep the pipes from freezing.
- Leave cabinet doors open** so house heat can warm the pipes better.
- Do not set your thermostat lower than 55°F**, even if you plan to be away for an extended time.
- Unhook Garden Hoses.** You can also install frost-free faucets and insulate outdoor faucets.

### Mobile Homes Need Special Pipe Care

- Install **Insulated Tape Wrap** or even better **Electric Heat Tape** on pipes under the trailer.
- Make sure the **trailer is skirted.**



## Lexington snow and ice removal

**W**inter weather is upon us and the City would like to remind citizens of the following points related to snow removal. There is also the Emergency Snow Route map on the next page.

Property owners are required to remove snow and ice from sidewalks abutting their property, within 48 hours of the snowfall. Removal of snow and ice from sidewalks not only ensures safe passage for pedestrians (including school children), but also limits liability. Someone who sustains injuries from slipping on ice might claim their injuries resulted from property owner neglect. Please remember that snow and ice removed from your property is not to be placed into the street. Instead move it to non-paved areas.

The City needs the cooperation of all citizens as we work to remove snow and ice from the streets. Citizens are encouraged to listen to local radio stations or read the local newspaper (including online) for

announcements of possible Snow Emergency situations where substantial snowfall is experienced or anticipated.



In times of a declared Snow Emergency, parking along streets in the designated Snow Emergency Route is prohibited. Commercial Areas may also be included (see Snow Route map).

Citizens living along these routes are encouraged to comply with the prohibition and move their vehicles from the street.

In addition, during a Snow Emergency, parking in the Downtown area is prohibited. In non-emergency times, citizens are still encouraged to move their parked vehicles off of the street in a reasonable period of time after snowfall to allow City crews access to remove the snow and ice. Information regarding the removal of snow in your area of the City can be obtained by contacting Tom Nelson at 308-324-5995.

The City of Lexington would like to reiterate that snow and ice removal is important for vehicular traffic as well as Pedestrian traffic.

Please take the time to do your part to keep our streets and sidewalks safe. The City of Lexington thanks everyone for their cooperation and prompt attention to this issue.





# City Happenings

#106



April 2024



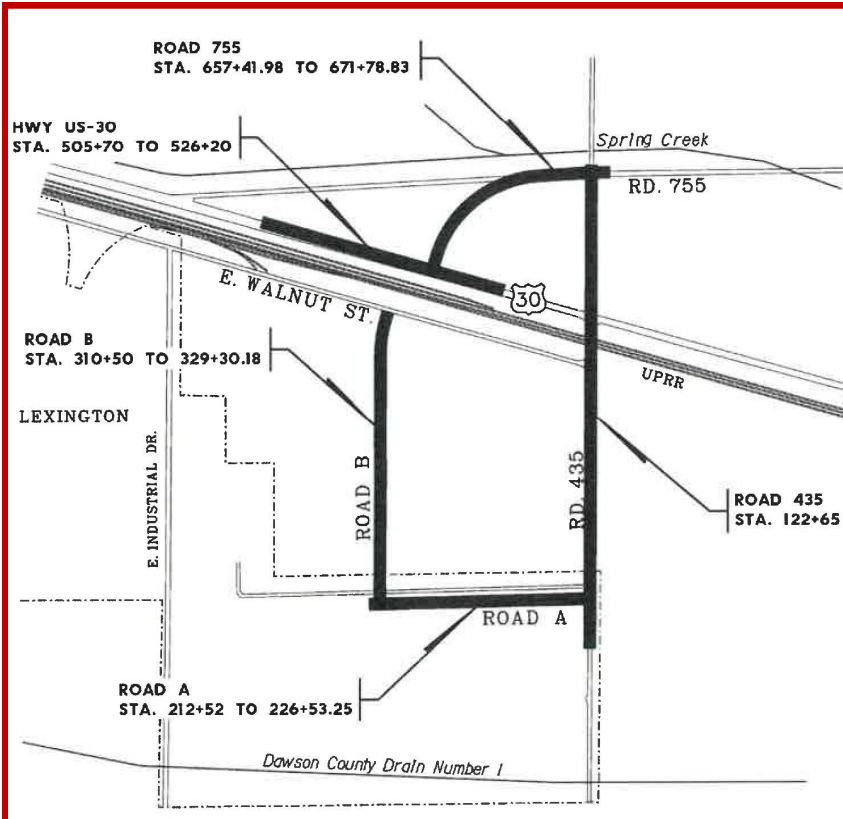
## East Viaduct Project Starts!

The long-anticipated Lexington East Viaduct project is scheduled to start construction April 1. Most motorists will not notice any activity for a few months, as the first couple of phases will be on out-of-the-way side roads. The actual overpass work will not begin until at least late July. That will be the longest-lasting phase, taking through October 2025 to complete.

The project is a joint collaboration with Dawson County, the Nebraska Department of

Transportation, and Union Pacific Railroad. Many years went into the planning and design phase, which is now finished. For the construction phase, we have engaged the engineering firm of Olsson Associates from Grand Island, and United Contractors of Johnston, Iowa, which offered the most competitive bid for the construction contract.

At the end of this newsletter find four-pages of details with special attention to the five planned phases as well as anticipated timing for each phase.



## What's going on at . . . ?



### ◀ East Commerce Road

**Lexington Self Storage** is a brand new state-of-the-art "smart" self storage facility at 606 Commerce Road in Lexington. They offer several different sized units to accommodate various storage needs. The facility is equipped with full concrete paving, outside lighting, 6' security fence, 18 cameras, digital gate entry and digital door locks. They are focusing on keeping the facility safe and user friendly for the residents. They will be offering outside space and larger units in future planning. Call 308-221-2299 for more information, pricing and leasing. You may also go directly to [www.lexselfstorage.com](http://www.lexselfstorage.com) to lease yourself!





## DINNER & AUCTION

### SATURDAY, APRIL 13TH, 2024

# SAVE THE DATE

PREVIEW NIGHT OPEN HOUSE  
FRIDAY, APRIL 12TH  
5:00-8:00PM

Prepaid Reservations Accepted  
Beginning Monday, October 2nd, 2023

LEXINGTON COMMUNITY FOUNDATION  
PO BOX 422 / 607 N WASHINGTON  
LEXINGTON, NE 68850  
(308) 324-6704  
OFFICE@LEXFOUNDATION.ORG

Reserved, Limited Seating Only  
Individual Seats \$150  
Tables Seat Eight  
Credit Cards Accepted  
Semiformal Dress



## Lexington's Yard Waste Site on East Walnut Has Moved

Here's How to Get to the New and Improved Yard Waste Site at 1202 E. Industry Drive.



## 2024 National Small Business Week

**BUILDING ON AMERICA'S  
SMALL BUSINESS BOOM**

April 28-May 4, 2024

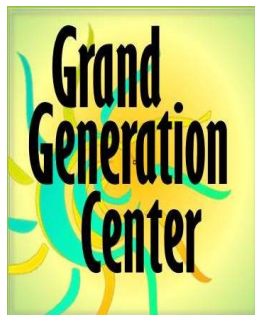


**SBA** U.S. Small Business Administration

**SHOP LOCAL – SHOP SMALL**

[sba.gov/nsbw](https://sba.gov/nsbw)





**Bye  
Bye  
Angie!**



## Shred It Day!

FREE shredding event for age 60 & older on Friday, April 19, from 10:00 a.m.-1:00 p.m. This event is sponsored & coordinated through the Senior Medicare Patrol (SMP) Program at West Central Area Agency on Aging and hosted by the Lexington Grand Generation Center.

Residents in our community, age 60 & older, are invited to participate. This is a good opportunity to SAFELY & SECURELY destroy any sensitive documents. The large shredder truck can safely handle documents with staples, paperclips, rubber bands, colored paper, file folders, and window envelopes so these items do not have to be removed from the documents. Please consider utilizing this cost free opportunity. It is a chance to safely destroy documents such as old bank statements, old Medicare summary notices, outdated tax documents, items that include your social security number and/or other personal information.

For additional information or any questions, please call Amanda Barkmeier at West Central Area Agency on Aging at (308) 535-8195.

## Retirement Party



Angie is officially retiring after  
15 years of  
service to the  
**Grand Generation Center**  
Join us to celebrate  
April 12th  
9:30-10:30  
At the  
**Grand Generation Center**





**SUMMER JOBS** - Temporary Seasonal Workers, Part-time

**APPLY NOW!**

**Positions available include:**

- Concession Workers (age 14+)
- Lifeguards (age 15+)
- City Park and Cemetery Maintenance (age 16+)

The City of Lexington is an Equal Opportunity Employer. Download an application from the city website, [www.cityoflex.com/human-resources/](http://www.cityoflex.com/human-resources/).

Remember, you're not just washing your car

Find out more at [www.cityoflex.com](http://www.cityoflex.com)

### Practice good car care

**Did you know?**

Four quarts of oil can form an 8-acre oil slick if dumped or spilled down a storm drain? That's because storm drains found in our streets and yards lead directly to our lakes and streams. So, oil and dirty water from washing our car that goes into storm drains pollutes our water.

**What can you do? Simple:**

- Take your car to the carwash where the dirty water is treated before it gets to our water.
- Wash your car on your lawn or direct the dirty water toward the lawn and away from the storm drain, or wash your car at a commercial car wash location.
- Keep your car properly tuned.
- Recycle used fluids and never dump them down the storm drains.

**Help keep the oil where it belongs . . . in you car!**

Support provided by Nebr. Dept. of Environment & Energy

[www.cityoflex.com](http://www.cityoflex.com)





## Library News



907 N Washington  
(308) 324-2151



by Jennifer Norton  
Library Director

*"Books are like mirrors: if a fool looks in, you cannot expect a genius to look out." - J.K. Rowling (author of "Harry Potter" series)*



## Humanities Nebraska Series: The Ladies of Nebraska Literature

April 4 @ 7 p.m. - "The Life and Drive of Mari Sandoz" presented by Peg Gilbert



A living history program about Mari's life from infancy and the

experiences that shaped her into a nationally known author.

April 11 @ 7 p.m. - "Bess Streeter Aldrich: In Her Own Words" by Jolene McLaughlin



Stepping back to 1946, McLaughlin portrays Bess Streeter Aldrich in period attire.

Aldrich, born in Iowa, lived her adult life in Elmwood, NE where she wrote and published 160 short stories and 13 books.

April 18 @ 7 p.m. - "Willa Cather's Life in Letters" presented by Andrew Jewell



Drawing on Jewell's experience co-editing the first book of Cather's letters, his talk explores

the way Cather used letters to communicate her ideas, maintain her relationships, and think through her life and experiences.



**Creative Aging Arts Program made possible through a grant from the Nebraska Arts Council.**



**Wednesdays, May 22 - June 26; 2-2:30 pm** - A six-session art class

taught by Nebraska artist **Christy Kosmicki** ending with a culminating showcase of the participants' creations. Kosmicki will lead five hands-on lessons focusing on the mandala. Mandalas are used throughout the world by many cultures. "Mandalas Past and Present: Self-expression, Personal Symbols, and Decorative Design" is FREE, and open to adults 55 and over. Space is limited to 16 participants and registration is required.



Like us on Facebook



*(Library News continues on next page)*



## HONOR A VETERAN WITH THIS LASTING TRIBUTE

Thanks to the Lexington Veterans Memorial Committee, you now have the opportunity to purchase a commemorative brick which can be inscribed in honor or in memory of a veteran. The bricks will be installed on the Veterans Pavilion Memorial Wall at the south end of Kirkpatrick Memorial Park.



The process is simple: fill out the form at <https://donate.brickmarkers.com/lex>, (or use the QR code above) and remit your payment. All the helpful details are at the website.

Thank you for supporting our local heroes!



## Library News

(continued from previous page)



**Family Fun Night:**  
Thursday, April 25  
5:30 p.m.

Families are invited to the final Family Fun Night of the school year. Enjoy a meal and learn about the Somali culture with food, activities and fun.



## Lexington Comp Plan Wins Award for the City

To set this up, every Nebraska city, town or village that wants to administer zoning, must create a Comprehensive Development Plan, and update it every few years. This is usually referred to as a Comp Plan. There are many talented professionals working in this field, and most belong to the Nebraska Planning and Zoning Association (NPZA) and the American Planning Association Nebraska Chapter (APA/NE).

Lexington's last major update was in 2013. The City worked with the JEO Consulting Group, which dubbed it "Lex-Plan 2013." Now, some 10 years later, JEO took a look at City's progress, and saw that we had done an above-average job at using the Comp Plan to propel progress in Lexington. So they nominated the Plan for APA/NE's "Implementation Award." We won that award and, on March 7, Assistant City Manager Dennis Burnside attended the organization's annual meeting to accept the award.

The following is the introduction speech given by APA/NE President Stephanie Rouse, AICP, of Lincoln:

Between 1990 and 2013, the City of Lexington, Nebraska, underwent a major transformation. In the early nineties, the establishment of a meatpacking facility reshaped the community, triggering an influx of diverse populations and sparking a housing crisis spanning the next two decades. Struggling with a private market unable to meet the evolving housing demands, Lexington initiated both a comprehensive plan and long-range transportation plan in 2013. Collaborating with JEO Consulting Group and HDR, the city engaged in a comprehensive,



(above) Assistant City Manager Dennis Burnside and APA/NE Vice President Cale Broderson

(below) the glass trophy for the Lex-Plan 2013 Implementation Award



bilingual community outreach, setting the stage for strategic projects that aimed to reshape Lexington's housing landscape and rejuvenate its community identity.

The city has made significant progress in bringing about the changes outlined in the 2013 comprehensive plan and documented in the 2024 update. Notable achievements in implementation include: the Lexington Field House, Plum Creek Park Improvements and Racquet Center, and a 26,000 panel solar array.



(left) APA/NE's Facebook notice of Lexington's Award. Left to right: JEO's Jeff Ray, Lexington Assistant City Manager Dennis Burnside, and APA/NE President Stephanie Rouse.





## EnergyWise Tip: Wind Washing



by NPPD Energy Efficiency Program Manager Cory Fuehrer

Wind washing: It's not a new, evolutionary way of laundering clothes. It's not a water-conserving approach to personal hygiene. It's not even a technique for cleaning dirty windows. Rather, wind washing is the movement of unconditioned air around or through buildings in such a way that diminishes or nullifies the intended thermal performance. More simply put, wind washing may be eroding the benefits of your home's insulation, especially in the attic.

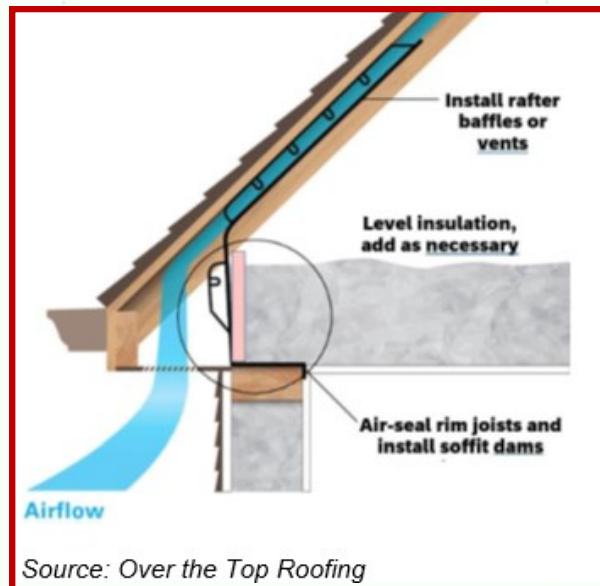
Therefore, it could be causing your home to use more energy during heating and cooling seasons.

Most often, wind washing is caused by airflow coming through the soffits or roof vents into unconditioned attic spaces. While air movement is necessary for proper ventilation, it shouldn't move through insulation. When it does, gusts can push loose-fill insulation out of place, causing bare spots and uneven insulation. Blown-in fiberglass and rockwool insulation are most vulnerable to its effects. Typically the problem starts in

open, vented soffit areas where roof trusses set on the top plate of exterior walls.

The solution is to direct air flow within the attic while eliminating its opportunity to pass through insulation as illustrated below.

Start by raking loose-fill insulation away or pulling blanket insulation back from vented soffit areas. Air



Source: Over the Top Roofing

seal rim joists and drywall seams with spray foam insulation. Also seal floor cavities below attic knee walls and cantilevered floors, if necessary. Install rafter baffles or vents at each rafter bay to direct air flow above rather than through attic insulation. Cut foam board to snugly fit between ceiling joists and install them to serve as soffit dams. These should

extend four inches above the final level of insulation where possible. Remember, the US Department of Energy recommends insulating attics in Nebraska to an R-value of 49. This will likely require an insulation depth of 16 to 18-inches. Redistribute existing insulation back evenly into affected areas and add new insulation as necessary. If wind washing continues in problem areas, consider installing a roll of batt insulation over the top to confine loose-fill insulation. As part of home maintenance, remember to inspect attic spaces annually for the effects of wind washing and settling insulation.

Lexington Utilities System, in partnership with Nebraska Public Power District, wants to help you gain the most value from the energy required to heat and cool your home. Qualified customers may

be eligible for EnergyWise<sup>SM</sup> attic insulation incentives to help with improvement costs. For more ideas on how you can make your home or business EnergyWise<sup>SM</sup>, contact Lexington Utilities System, or visit [www.energywisenebraska.com](http://www.energywisenebraska.com) for more information.





## Electric Yard Tool Incentive

Electric lawnmower technology has improved. Now if you buy a new electric lawnmower, get a rebate of about 20% the purchase cost. Also electric chainsaws, tillers and snowblowers.

## Maybe it's time to go electric



Gasless, but not gutless. Quiet, but not shy. This is not your grandfather's battery-powered mower. Advances in battery technology have come a long way in recent years. More power is now being packed into batteries so your mower can speedily deliver a knock-out punch to your lawn.

Maybe it is time to consider upgrading your conventional, gas-burning mower with a new electric or battery-powered option. Consider the following advantages:

- Lower energy costs – depending on how often you mow, electric-powered mowers will cost about \$15 per year in electricity. Gas mowers use approximately \$30 of gasoline.
- Less maintenance – no sparkplugs, air filters, fuel filters, or oil change.
- Quieter operation – electric mowers create up to 75 decibels of sound, which is similar to a washing machine. Gasoline mowers can exceed 95 decibels, which is comparable to a motorcycle on the highway.
- Eco-friendly – no toxic gas emissions from nitrogen oxides, airborne particulates, carbon monoxide, or carbon dioxide.

### Follow these easy steps

- Obtain an EnergyWise<sup>SM</sup> Lawn and Garden Program application form from Lexington Utilities System (also at [www.cityoflex.com](http://www.cityoflex.com)—under “Utilities” tab, scroll to bottom of page).
- Purchase your choice of a new (not used, previously owned or factory reconditioned) battery-powered or corded electric riding, walk-behind, or robotic mower on or after January 1, 2023. Chargers and additional battery purchases are available for the incentive at time of initial mower purchase. However, taxes, delivery/shipping and set-up costs are not.
- Complete the application and return it to Lexington Utilities System with a copy of proof of purchase identifying the selected mower, batteries, etc.
- Rebate also applies to electric chainsaws, tillers and snowblowers.



“To leave the world better than you found it, sometimes you have to pick up other people’s trash.”

**Go NE Where**  
PUBLIC TRANSIT WEEK

**Public Transit Week**  
**April 7-13, 2024**

**RYDE Transit** Please call (308) 865-5677 to schedule your RYDE today!



### Like us on Facebook!

Get the latest scoops about what's going on in Lexington!

FaceBook users: be sure to search for “City of Lexington, Nebraska” (not to be confused with the generic page the FaceBook folks created). Only our official page gives you the latest news and updates.

<https://www.facebook.com/pages/City-of-Lexington-Nebraska/157277430966096>



# FAIR HOUSING: THE 'ACT' IN ACTION

FAIR HOUSING  
MONTH 2024

HUD.GOV/FHM

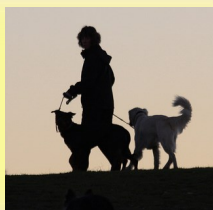


⚠ If you feel you have experienced **housing discrimination** based on race, color, national origin, religion, sex (incl. sexual orientation and gender identity), disability, and familial status, contact HUD at **1-800-669-9777**, online at **www.hud.gov/fairhousing**, or your local fair housing organization.



REPORT DISCRIMINATION

## ATTENTION DOG OWNERS



As you and your dog are out walking in your neighborhoods, in the City's parks or on the trails, please remember to clean up after your dog.

A simple plastic bag slipped over your hand like a glove makes an efficient and clean pick-up tool. Picking up is just part of having a dog. It may seem silly at first, but people who see you do it will know any mess left behind is NOT from your dog. Picking up shows pride in your community, in yourself, and in your dog. You'll set a great example for others, and will help create a positive image for dogs and their owners.



## Four Promotions on the Lexington Police Department

Last year's retirement of Police Chief Tracy Wolf precipitated a series of promotions in the department.

In addition to Wolf's successor Paul Schwarz (formerly Captain), former Sergeant **Phil Lauby** was named Captain.

There are also three new Sergeants. Here they are in order of their longevity with the force, shown with Police Chief Schwarz:



▶ **Iain McDiarmid**,  
a 10-year veteran of the force.

▶ **Edwin Perdomo**,  
6 years on the force.

▶ **Jose Torres**,  
5 years on the force.



**National Police Week**  
**May 15-21, 2024**

President John F. Kennedy  
proclaimed May 15 to be **National  
Peace Officers Memorial Day.**





## DRIVING RANGE OPENS APRIL 1

Self-Service



May be closed if cold or stormy . . .  
Just southeast of the Lexington Fieldhouse  
Optimist Recreation Complex  
13th & Airport Road

Small Bucket

about 40 balls

\$3

Medium Bucket

about 75 balls

\$5

Large Bucket

about 105 balls

\$7



801 West Vine St.  
308-324-5995  
Mon. - Fri.  
8 a.m. - 4 p.m.

### SUMMER SATURDAYS

(May - October):

The Service Building is open  
the **third Saturday** of the month  
8 a.m. - 12 p.m.



- dispose of furniture, appliances, and other large items (small fee may apply)
- recycle paper, plastic, and cardboard
- pick up free wood chips or compost



LEXINGTON  
**150**  
YEARS


1874 - 2024





APRIL 18

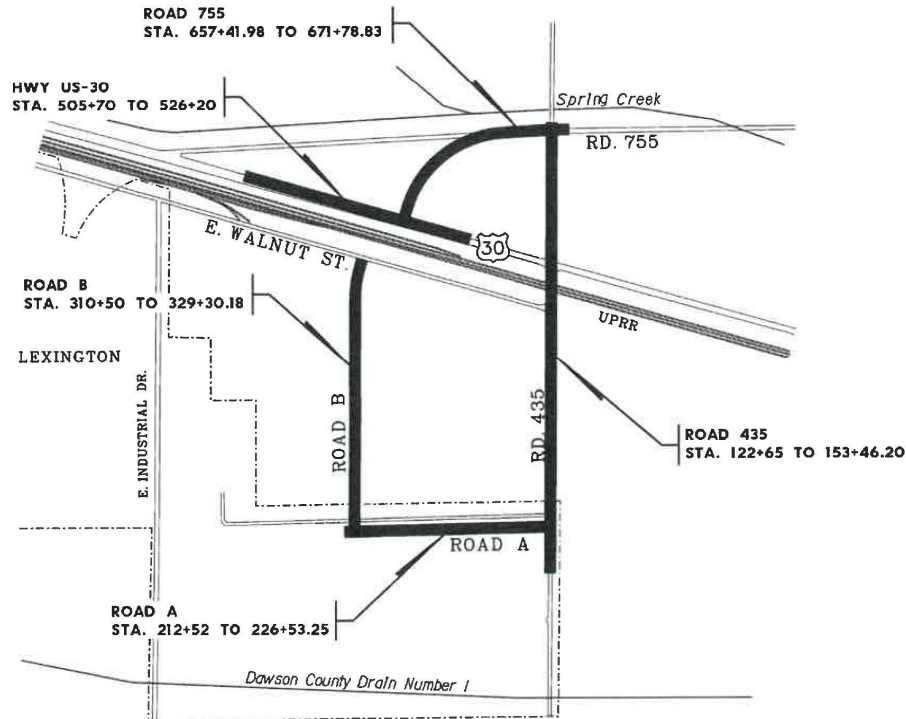
NATIONAL  
**LINEMAN**  
APPRECIATION DAY



National Lineman Appreciation Day is a time to express our appreciation to the great men and women that work so hard for us every day. It's our honor to celebrate the hard work, innovation, and dedication of Electrical Lineworkers. #thankalineman



## Lexington East Viaduct Dawson County, NE RRZ-TMT-1705(3), CN 61457



**City of Lexington**  
406 East 7<sup>th</sup> St.  
Lexington, NE 68805  
(308) 324-2341

**Construction Engineer**  
Olsson  
201 E. 2<sup>nd</sup> Street  
Grand Island, NE 68801  
(308)384-8750

**Prime Contractor**  
United Contractors Inc.  
6678 NW 62<sup>nd</sup> Avenue  
Johnston, Iowa 50131  
(515)577-2350

**City Manager**  
Joe Peplitsch

**Project Manager**  
Steve Hancock

**Contractor's Project Supt.**  
Chuck Kadlecek

**Assistant City Manager**  
Dennis Burnside

**Project Inspector**  
Aaron Van Luchene



# Roadway Improvement Information

## Lexington East Viaduct

---

**Phase 1-** Scheduled to begin April 1, 2024. Work to be completed in this phase includes storm sewer, grading, and paving of Road A and Road B. During this first phase of construction only Road A and B will be closed to traffic, and access to businesses and thru traffic will remain along Road 435 and Walnut Street. New private driveways will be constructed along Hwy 30 Road 755 to provide access to businesses and residents during future phases. Construction is anticipated to last approximately 35 days.

**Phase 2-** This phase will be constructed in three parts, A, B, and C to ensure access to businesses can be maintained. Work will begin for Phase 2A along the south portion of Road 435 starting approximately 300 feet south of Road A and extending approximately 200 feet north of Road A. Construction will consist of removing the existing pavement, installing storm sewer, grading, and constructing the new pavement. Work on Phase 2A will require closure of the intersection of Road 435 and Road A and is expected to start late April. During this closure local traffic only will be allowed on Road 435, and all thru traffic will be detoured. Once 2A is complete, the intersection will be opened to traffic, and work will progress into Phases 2B and 2C with continued closure of Road 435 for thru traffic. Roads A and B will be open to traffic before work begins on Phase 2B and 2C. All work in Phase 2 is expected to be complete by mid June.

**Phase 3-** Towards the end of but concurrent with Phase 2, work will begin along Highway 30. This work will include removal of the shoulder, grading,

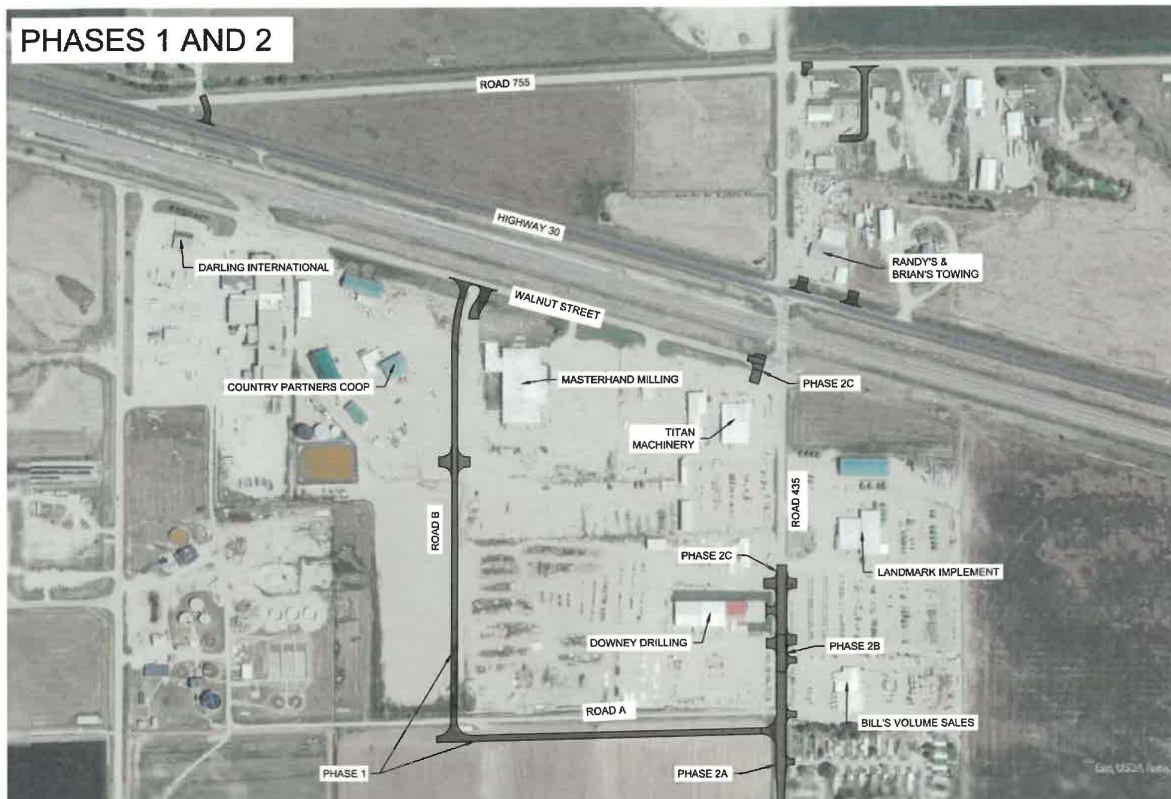
and widening of the paving to allow for a future turn lane. Highway 30 will remain open to thru traffic during this time. This work will begin early June and should be completed toward the end of the month.

**Phase 4-** This work will likely overlap with Phase 3, and consists of removal and closure of Road 755. Work will include grading, storm sewer and paving. Work will begin mid June and will last until mid July. Towards the end of this phase, the intersection of Road 435/755 will be closed down and reconstructed. New accesses to the residences and businesses off of Hwy 30 and Road 755 will have already been constructed. Road 755 will be permanently closed during this phase and the intersection of Road 435/755 will be temporarily closed. During this closure, traffic will be detoured away from this intersection.

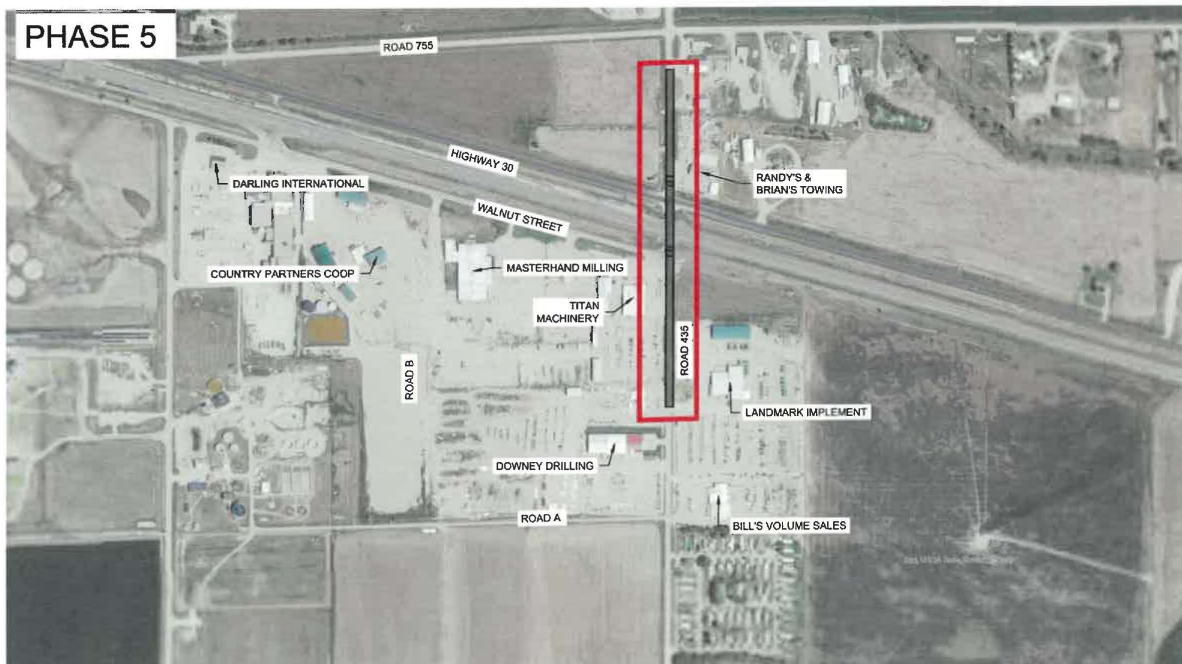
**Phase 5-** Work on Phase 5 is expected to begin towards the end of July 2024 and will last until October 2025. During this phase work will be completed along Road 435 from approximately 600' north of Road A up to Road 755. Work includes pavement removal, storm sewer, grading, bridge construction, roadway lighting and paving. During this closure businesses will obtain access from the newly constructed portions of Road 435 or from Walnut Street. Road 435 will be closed and thru traffic will be detoured along Roads 754 and 756 west to Highway 283 and Taft Street. There will also be intermittent interruptions along Highway 30 during this time and traffic will be detoured accordingly.



## Lexington East Viaduct Construction Phasing Plan 2024-2025



## Lexington East Viaduct Construction Phasing Plan 2024-2025



CLIP & SAVE

# TORNADO

Now that “tornado season” is here, Emergency Management Warning Sirens will sound to alert residents of an impending tornado in our area.

## TORNADO NATURAL DISASTER TECHNICAL HAZARD

### 3 MINUTE STEADY SIGNAL

This signal indicates that a tornado, natural disaster, or technical hazard is pending. Persons should take cover or move to a place of safety and listen to a local radio or television station for information and further instructions. This siren may sound more than once if deemed necessary by Emergency Management.

**Do not call the police or radio station to ask for information. People SIGHTING a tornado or funnel in this are urged to notify the Dawson County Emergency Center at 911.**

### ALL-CLEAR

The all-clear bulletin will be issued by the local radio and TV stations in cooperation with the National Weather Service.

**Local Emergency Management WILL NOT issue an all-clear statement.**

During unusual threatening weather or emergency conditions, listen to a local radio or TV station for further information.

## SAFETY GUIDELINES

The following are general safety guidelines for seeking shelter:

- Move to a lower level or basement
  - If no lower level is available, move to an interior room or hallway on the lowest floor and get under a sturdy piece of furniture. Put as many walls as possible between you and the outside.
  - Stay away from windows.
  - Flying debris from tornadoes causes most deaths and injuries. Cover your head and make yourself the smallest target possible.
- Do not try to outrun a tornado in your car; instead, get out of the vehicle and seek safe shelter in a nearby building.
- If you are outside and there is no shelter immediately available, avoid trees and vehicles. Do not get under an overpass or bridge. You are safe in a low, flat location. Lie flat in a nearby ditch or depression and cover your head with your hands.

Emergency warning system tests of one minute in duration are conducted the first Thursday of each month at 9:00 a.m. **Sirens are designed for outdoors warning only.** For optimal safety, citizens are encouraged to get weather radios using the **NOAA** (National Oceanic and Atmospheric Administration) and/or **SAME** (Specific Area Message Encoding) standards.



KEEP LEXINGTON BEAUTIFUL

# FREE COMMUNITY SHREDDING EVENT!



DONATIONS WILL GO TOWARDS RECYCLING PROJECTS!

**APRIL 25TH 3-5PM &  
OCTOBER 12TH 12-2PM**

**H&R BLOCK \* 617 N. Grant St. Lexington**

Shredding available to anyone in the Lexington area, residential and commercial. No cardboard boxes accepted. Document drop off available 1 day in advance.

For more information contact us @ [k1bnebraska@gmail.com](mailto:k1bnebraska@gmail.com) or  
308-325-5701







www.cityoflex.com

NEBRASKA

ECONOMIC DEVELOPMENT  
CERTIFIED COMMUNITY

# City Happenings

#107

June 2024



## First Look at the Lexington Racquet Center

Workers are putting the finishing touches on the new 28,000-square-foot **Lexington Racquet Center**, at the southwest corner of Plum Creek Park, near West 11th and Park Streets.



The Center will be open soon and was funded by a \$600,000 grant from the Civic Center & Community Financing fund administered by the Nebraska Department of Economic Development, donations to the Lexington Community Foundation, and from the City of Lexington.



City Offices:



406 E 7th Street



Lexington, NE 68850



308-324-2341



## Library News



907 N Washington  
(308) 324-2151



by Jennifer Norton  
Library Director

*"To acquire the habit of reading is to construct for yourself a refuge from almost all the miseries of life." W. Somerset Maugham*



**Early Elementary Adventures**  
—Mondays in June for K-2 grade students, 2-3 p.m. Registration is required.



**Preschool Adventure Story Times** - Wednesdays in June at 10:30 a.m. Guest readers will share adventures from their career fields.

**Middle School Adventure Book Club** - Read a book from the Adventure Book Cart at the library and enjoy a pizza party on June 28 at noon to share your comments on the book you read. Open to 30 middle

school students. Register at the library.



**Saturday Art Adventures** - Saturdays in June from 9-11 a.m. for 3-7 grade students. **Cozad Art Club** will teach their art forms for adventurous fun. Space is limited and registration is required.

### Gardening Adventures -



Fridays in June for students grade 5-8, 10:00-11:30 a.m. Learn from master gardeners from **Natural**

**Escapes**, plant porch pots and much more. Registration is required.

## SPECIAL EVENTS/PRESENTATIONS



**Crane River Theater** presents "Beauty and the Beast" Thursday, June 6, at 10:30 a.m. - Lexington

Middle School Auditorium



**Nebraska Public Media** presents "Alma's Way" Friday, June 7, at 5:30 p.m. Light meal at 5:30 with activities to follow. Free and open to the public.

**Young Enough Women's Book Club.** Both groups meet on the fourth Monday of the month at 6:00 p.m. at the library.



Like us on Facebook

*(Library News continues on next page)*



## Library News

(continued from previous page)



**Family Fun Magic Show** will be presented by **Adam White** Thursday, June 20 at 1:00 p.m. – Lexington

Middle School auditorium.

**Carlos R. Serván** — author of “Running Dreams: An Immigrant’s Hurdles and Triumphs, After Blindness and Amputation,” will be at the Library Saturday, June 29, at 3:30 p.m.

**The Inaugural One Book, One Lexington 2024**  
*Running Dreams: An Immigrant's hurdles and triumphs, after blindness and amputation* by Carlos R. Serván

Events planned throughout the year.  
\*Book discussions  
\*Speakers  
\*Programs

Mr. Serván presently directs the Nebraska Commission for the Blind. He lives in Lincoln, NE.

**Lexington PUBLIC LIBRARY**  
907 N. Washington St.  
Lexington, NE 68850  
308.324.2331



## Electric Yard Tool Incentive

Electric lawnmower technology has improved. Now if you buy a new electric lawnmower, get a rebate of about 20% the purchase cost. Also electric chainsaws, tillers and snowblowers.

## Maybe it's time to go electric



Gasless, but not gutless. Quiet, but not shy. This is not your grandfather's battery-powered mower. Advances in battery technology have come a long way in recent years. More power is now being packed into batteries so your mower can speedily deliver a knock-out punch to your lawn.

Maybe it is time to consider upgrading your conventional, gas-burning mower with a new electric or battery-powered option. Consider the following advantages:

- Lower energy costs – depending on how often you mow, electric-powered mowers will cost about \$15 per year in electricity. Gas mowers use approximately \$30 of gasoline.
- Less maintenance – no sparkplugs, air filters, fuel filters, or oil change.
- Quieter operation – electric mowers create up to 75 decibels of sound, which is similar to a washing machine. Gasoline mowers can exceed 95 decibels, which is comparable to a motorcycle on the highway.
- Eco-friendly – no toxic gas emissions from nitrogen oxides, airborne particulates, carbon monoxide, or carbon dioxide.

## Follow these easy steps

- Obtain an EnergyWise<sup>SM</sup> Lawn and Garden Program application form from Lexington Utilities System (also at [www.cityoflex.com](http://www.cityoflex.com)— under “Utilities” tab, scroll to bottom of page).
- Purchase your choice of a new (not used, previously owned or factory reconditioned) battery-powered or corded electric riding, walk-behind, or robotic mower on or after January 1, 2023. Chargers and additional battery purchases are available for the incentive at time of initial mower purchase. However, taxes, delivery/shipping and set-up costs are not.
- Complete the application and return it to Lexington Utilities System with a copy of proof of purchase identifying the selected mower, batteries, etc.
- Rebate also applies to electric chainsaws, tillers and snowblowers.



## Lexington's Yard Waste Site on East Walnut Has Moved

Here's How to Get to the New and Improved Yard Waste Site at 1202 E. Industry Drive.



## Lexington Named a Tree City USA for 27th Consecutive Year



The Arbor Day Foundation has named Lexington a Tree City USA City community for the 27th year in a row. The designation recognizes

Lexington's commitment to nurturing a diverse urban forest in 2022. Lexington was also honored with a "Growth Award," for the Lexington Tree Board's 2023 tree planting projects, Arbor Day events, and continuing education.

Arbor Day 2024 was April 27. The Lexington Tree Board recommends the following trees to be good fits for Lexington's needs, climate, and soils: Mountain Ash, Coffeetree, Gingko (male only!), Hackberry, American Linden, Elm

(Princeton, Discovery, Accolade, Frontier, Triumph, Japanese, Jefferson, New Horizons or Lacebark), Maple (Norway, Sugar or Miyabe), Orange Osage, Goldenraintree, Honeylocust (Shademaster), Linden (American or Littleleaf), Oak (Bur or Chinkapin), Japanese Pagodatree, and Walnut.



## Husband and Wife Retire Same Day

Two long-time City workers celebrated their retirement together the same way they marked many events in their lives - as husband and wife.

**Denny Sund** started in 1997 and has worked at Lexington's Wastewater Treatment Plant for almost 27 years. **Angela Sund** started in 2009 and has worked at Lexington's Grand Generation Center for about 15 years.

The City held a reception for the couple April 12 at the Grand Generation Center, prompting dozens of coworkers, friends and well-wishers to attend.

Please join us in wishing Denny and Angie Sund a Happy Retirement!



Left to Right: City Manager Joe Peplitsch, Angie and Denny Sund, and City Parks and Rec Director Ann Luther (Angie's boss)

## Nebraska H2O stormwater improvement tips

### What you can do to help

#### Easy tips for keeping our waters clean.



#### Litter disposal

Dispose of litter by throwing it in a trashcan or recycling it. In addition, do your part by disposing of litter you find in the street or on the sidewalk.

#### Washing your car

You can either take your car to a self-service car wash, which is designed with special drains for proper disposal, or wash your car on your lawn. The dirt below will act as a filter for the soap.

#### Pet waste

It's best to dispose of pet waste in the trash or, better yet, flush it down the toilet. This water will be properly treated.

#### Household chemicals

Cleaning products and other household chemicals should never be dumped outside, down the sink – or down a storm drain. Visit [www.NebraskaH2O.org](http://www.NebraskaH2O.org) and click on our Tips section to find out the location of a facility that will dispose of them properly.

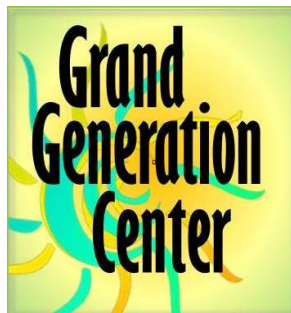
#### Fertilizer and Pesticides

You'll need to take leftover substances to a designated waste control area.



Visit [www.NebraskaH2O.org](http://www.NebraskaH2O.org) for more information about stormwater information and related topics!



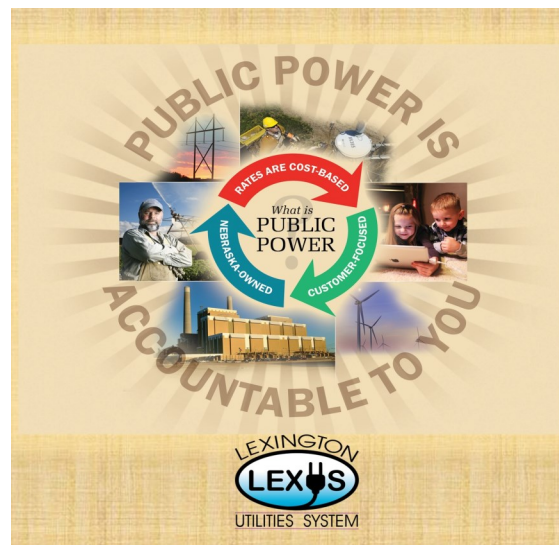


## Rummage Sale

- We are accepting donations for the sale starting Monday, June 3rd.
- Sale starts Thursday, June 6th (9:00 am -8:00 pm) to Friday, June 7 (9:00 am-5:00 pm)
- Proceeds from the sale will go to a new ice cream machine for the center.

### Fathers Day at the GGC

On June 17 at 10 a.m., we'll be hosting "Donuts for Dad" as part of our Father's Day Celebration. During the event, Don Batie will be presenting on farming and the use of drones in modern agriculture.





## EnergyWise Tip: Light Switches



by NPPD Energy Efficiency Program Manager Cory Fuehrer

In June of 1752, Benjamin Franklin and his son, William, conducted the famous kite-in-a-thunderstorm experiment to demonstrate the relationship between lightning and electricity. By attaching the kite to a Leyden jar, which was an early type of battery invented seven years earlier, they attempted to collect “electric fire” to be discharged at a later time.

Fifteen years prior, while writing under the heading, “Necessary Hints to Those That Would Be Rich,” in “Poor Richard’s Almanack,” Franklin wrote, “A penny saved is twopence dear,” which as we know translates to, “A penny saved is a penny earned.” Had the order of these two events been reversed, might he have written, “A kilowatt-hour saved is a kilowatt-hour earned?”

Though unlikely he would have, this modified phrase demonstrates one of the simplest energy-saving strategies: When a light is no longer needed, switch it off. Unfortunately, it is one of the most overlooked efficiency opportunities in our daily lives. According to the U.S. Department of Energy’s 2020 Residential Energy Consumption Survey, the average single-family home has 85 lights. With so many, it is easy to see how one or more of these opportunities are often overlooked.

Fortunately there is an easy way to manage this problem: Change the switch! Rather than relying on yourself or your family members to remember to turn lights off by flipping the toggle switch on the wall, install a switch that automatically turns lights, fans, or other electrical loads off when they are no longer needed.



There are many designs for these devices, and the images here should not be taken as the only form one might find, or as endorsement of any style or brand.

In the bathrooms, change out the standard switch to the fan with a timer switch. While bathroom fans are useful for removing excess humidity, they often run long after bathing is complete. A timer switch

ensures enough run-time but stops the unnecessary removal of conditioned air that your furnace or air conditioner will need to make more of.

Occupancy sensor switches are a great way to illuminate a room without flicking the switch. Occupancy sensors use passive infrared (PIR) and/or ultrasonic sensors to detect the presence or absence of occupants in a space. PIR detects occupants’ presence by sensing the difference between heat emitted by moving people and background heat. Ultrasonic sensors detect the presence of people by sending ultrasonic sound waves into a space and measuring the speed at which they return. They look for frequency changes caused by a moving person. If no one is detected in a room after a pre-set period of time, the switch automatically turns the lights off.

A relative of the occupancy sensor switch is the vacancy sensor switch. Unlike an occupancy sensor, a person must manually turn the lights on. But when no one in the room is detected, a vacancy sensor switches the lights off just like an occupancy sensor. These work especially well in teenagers’ bedrooms, as I have found my daughters very capable of turning these lights “on” but seldom “off.”

*(continues on next page)*



## Light Switches

*(continued from previous page)*

A third option you may consider is a smart switch. Most smart switch options use either Wi-Fi or ZigBee communications and pair directly with your home computer network or smartphone. Many smart switches offer built-in smart dimming capabilities and operation scheduling and can be paired with motion-, occupancy- and photo-sensors. As home automation becomes ever-more desired, smart switches are becoming popular in newly constructed homes.

Lexington Utilities System and Nebraska Public Power District want to help you make the best choices to shine a light on these powerful subjects! This includes helping you make the most of the energy you use throughout the year. For more ideas on how you can make your home or business EnergyWise<sup>SM</sup>, contact Lexington Utilities System or visit [www.energywisenebraska.com](http://www.energywisenebraska.com) for more information.



**The City's website has tools to help you save energy and money.**



### Interactive Energy Home



**Look for this button at**

**[www.cityoflex.com/departments/utilities](http://www.cityoflex.com/departments/utilities)**

## Buy a New Electric Lawn Mower, Get a Rebate



**20% incentive on any NEW battery powered or corded lawn mower, chain saw, or tiller**

**Must be new and purchased on or after Jan. 1, 2023**

**Costs NOT eligible: installation, taxes, shipping/delivery, and setup costs**

**Chargers and additional battery purchases are eligible for the incentive at the time of initial snow blower purchase.**

**Proof of purchase required.**



Nebraska Public Power District



Find the application form at [www.EnergyWiseNebraska.com](http://www.EnergyWiseNebraska.com)

Return paperwork to LEXUS, 406 E 7th, PO Box 70, Lexington, NE 68850





## HONOR A VETERAN WITH THIS LASTING TRIBUTE

Thanks to the Lexington Veterans Memorial Committee, you now have the opportunity to purchase a commemorative brick which can be inscribed in honor or in memory of a veteran. The bricks will be installed on the Veterans Pavilion Memorial Wall at the south end of Kirkpatrick Memorial Park.



The process is simple: fill out the form at <https://donate.brickmarkers.com/lex>, (or use the QR code above) and remit your payment. All the helpful details are at the website.

Thank you for supporting our local heroes!



**IT'S COFFEE TIME!**



**JULY 10, 2024  
9A-11A  
709 NORTH GRANT  
LEXINGTON NE**



**FREE COFFEE AND  
COOKIES  
K9 AND DRONE  
DEMONSTRATION**

### COFFEE WITH A COP!

Come and chill with the Dawson County Sheriff's Office and Lexington Police Department at the Dawson County Sheriff's Office parking lot (north of the sheriff's office) and enjoy a free cup of coffee from one of our generous sponsors, Drink Eazy! This is an opportunity for you to ask questions, voice concerns, and get to know your local law enforcement.

**GENEROUSLY SPONSORED BY:**

DRINK EAZY  
HOMES  
CALVARY CHURCH  
ACE RENT TO OWN  
LEXINGTON FAMILY EYE CARE

MRX TRUCKING  
PLATTE VALLEY AUTO  
HEARTLAND CHEVROLET  
REMMEGA DENTAL  
GREAT PLAINS CLINIC OF CHIROPRACTIC



### Like us on Facebook!

Get the latest scoops about what's going on in Lexington!

FaceBook users: be sure to search for "City of Lexington, Nebraska" (not to be confused with the generic page the FaceBook folks created). Only our official **page gives you the latest news and updates.**

<https://www.facebook.com/pages/City-of-Lexington-Nebraska/157277430966096>



## Lexington Family Aquatic Center

Adult Daily \$3.25  
Youth/Senior Daily \$2.25  
Family Daily \$11.00  
Individual Summer Pass \$50.00  
Family Summer Pass \$110.00  
10-visit punch \$25.00

10th & Monroe  
Lexington, Nebraska

Hours:  
12:30 - 5:30 p.m. Daily

## Summer Swimming Lessons Four Sessions June & July



**Lexington Family Aquatic Center  
(LFAC) 10th & Monroe**

**Session 1 - June 3 - 7**  
**Session 2 - June 10 - 14**  
**Session 3 - June 17 - 21**  
**Session 4 - July 8 - 12**

Application  
Form on  
Page 16

**TIMES (all sessions)**

**9:30 - 10:15 AM - Levels 3 - 5**  
**10:30 - 11:00 AM - Levels Pre, 1 & 2**

**For more information and to register contact LFAC, 308-324-2688.**

**Registration forms are available at the  
Grand Generation Center and the LFAC.**



## Lexington Tree Board Annual 3rd Grade Arbor Day Poster Contest 2024 Winners



Above: Poster from Sandoz Elementary's Loida Vasquez Below: Loida with her framed poster along with Tree Board members Dave Stenberg, Ann Luther and Marty Smith



Above: Poster from Bryan Elementary's Aliah Mendoza-Andrade Below: Aliah with her framed poster along with Tree Board members Marty Smith and Dave Stenberg



For their annual 3rd grade Arbor Day poster contest, the Lexington Tree Board named two winners shown above. The Tree Board judged 211 poster entries from third grade pupils. The purpose of the contest is to build appreciation at an early age for trees and the many benefits they give us. Arbor Day is always the last

Friday in April. This year it was April 26, and marks the 152nd year of Arbor Day, and the 52nd anniversary of the Arbor Day Foundation, headquartered in Nebraska City. Lexington Tree Board members are: Ann Luther, Tom Nelson, Marty Smith Kevin Zelaya and Dave Stenberg.



## DRIVING RANGE OPEN FOR THE SEASON

Self-Service



May be closed if cold or stormy . . .

Just southeast of the Lexington Fieldhouse  
Optimist Recreation Complex  
13th & Airport Road

Small Bucket

about 40 balls

\$3

Medium Bucket

about 75 balls

\$5

Large Bucket

about 105 balls

\$7



801 West Vine St.  
308-324-5995  
Mon. - Fri.  
8 a.m. - 4 p.m.

### SUMMER SATURDAYS

(May - October):

The Service Building is open  
the **third Saturday** of the month

8 a.m. - 12 p.m.



- dispose of furniture, appliances, and other large items (small fee may apply)
- recycle paper, plastic, and cardboard
- pick up free wood chips or compost

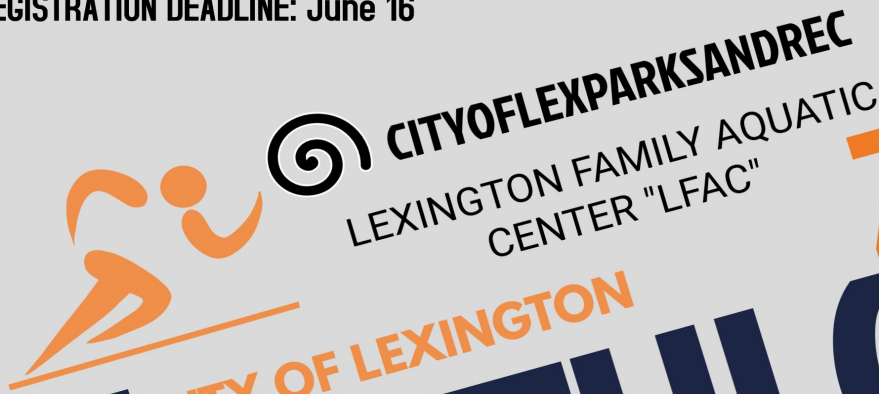


LEXINGTON  
150  
YEARS

1874 - 2024



REGISTRATION DEADLINE: June 16



# CITY OF LEXINGTON TRIATHLON

2024

JUNE 16 - JULY 14

SWIM: 2.4 MILES  
BIKE: 112 MILES  
RUN/WALK: 26.2 MILES  
28 DAYS TO COMPLETE!

Name: \_\_\_\_\_  
Phone #: \_\_\_\_\_  
DOB: \_\_\_\_\_

Guardian Signature if 17 yrs and younger \_\_\_\_\_

T-shirt Size: \_\_\_\_\_

- >Swimming Completed at LFAC
- >Bike/Run/Walk on your own
- >Track your progress at LFAC

**\$40.00 Registration Fee, Includes LFAC Lap Swim Admission  
Fee and 1/4 Zip Dri-Fit Pullover**  
Checks Payable To: City of Lexington  
Mail Checks To: PO Box 70, Lexington, NE  
or Drop Off At: LFAC

Contact: Ann Luther, 308-325-5277,  
aluther@cityofflex.com





JUNE 28, 2024 6 PM ★



Make Sparks! Run for the Parks!

# City of Lexington 5K Run/Walk



**Event: 6 PM, June 28**

**Individual Entry: \$25.00**  
**Family Registration: \$20.00**  
 \*(\$20.00 each family member)

**Register by** ←   
**Thursday, June 20**  
**to Guarantee Free**  
**Event T-shirt**

**Post Race Celebration @**



**Register Online by**  
**scanning QR Code:**

**If Mailing or**  
**dropping off entry**  
**form, please fill out**  
**the next page!**



**Free t-shirt**  
**Complimentary drink at**  
**Mac's Creek Winery & Brewery**  
**Free admission to the**  
**Lexington Family Aquatic**  
**Center on Saturday, June 29**

**Start and Finish at Lexington Racquet Center**  
**110 Park St.**

**@CITYOFFLEXPARKSANDREC**

**Contact Information: Ann Luther, 308-325-5277, [aluther@cityoflex.com](mailto:aluther@cityoflex.com)**  
**Jake Saulsbury, 308-746-3543, [jsaulsbury@cityoflex.com](mailto:jsaulsbury@cityoflex.com)**





JUNE 28, 2024  
6 PM

City of Lexington  
Make Sparks! Run for the Parks!  
★5K Run/Walk★



# REGISTRATION FORM

Mail Registration form to:

Lexington City Office  
Attn: Ann H. Luther  
PO BOX 70, Lexington, NE 68850

OR

Drop off at one of these locations: *Forms also available at locations*

- Lexington Grand Generation Center, 407 E. 6th St.
- Lexington Family Aquatic Center, 1002 N. Monroe

**\*MAKE CHECKS PAYABLE TO: CITY OF LEXINGTON**

\$25.00 Individual     \$20.00 for each immediate family member     Total Enclosed: \$[    ]

Name \_\_\_\_\_ Phone # \_\_\_\_\_

Email Address \_\_\_\_\_ Birth Date \_\_\_\_\_

City \_\_\_\_\_ State \_\_\_\_\_ Zip \_\_\_\_\_

Emergency Contact Name \_\_\_\_\_ Emergency Contact Phone # \_\_\_\_\_

T-Shirt Size: Youth M Youth L Adult Sizes: Small Medium Large XL 2XL 3XL  
(Circle One)

• Register by Thursday, June 20 to Guarantee Free Event T-shirt

Please fill out information below for immediate family members participating in event:  
\$20.00 each family member participating in the event (please indicate youth or adult t-shirt size)

Name \_\_\_\_\_ Gender (M/F) \_\_\_\_\_ Birth Date \_\_\_\_\_ Tshirt Size \_\_\_\_\_

Name \_\_\_\_\_ Gender (M/F) \_\_\_\_\_ Birth Date \_\_\_\_\_ Tshirt Size \_\_\_\_\_

Name \_\_\_\_\_ Gender (M/F) \_\_\_\_\_ Birth Date \_\_\_\_\_ Tshirt Size \_\_\_\_\_

Name \_\_\_\_\_ Gender (M/F) \_\_\_\_\_ Birth Date \_\_\_\_\_ Tshirt Size \_\_\_\_\_

Start and Finish at Lexington Racquet Center 1110 Park St.



Contact Information: Ann Luther, 308-325-5277, aluther@cityoflex.com  
Jake Saulsbury, 308-746-3543, jsaulsbury@cityoflex.com

Register Online by scanning QR Code:



## 2024 Lexington Family Aquatic Center Swim Lessons

### Registration Form

**Cost \$10.00 Per Child Per Session (ONE FORM PER CHILD)**

**\*Registration is allowed for only one week at a time**

Child's Name: \_\_\_\_\_

Parent's Name: \_\_\_\_\_

Address: \_\_\_\_\_

Cell Phone Number: \_\_\_\_\_

Emergency Contact: \_\_\_\_\_ Phone: \_\_\_\_\_

Child's Age (4+): \_\_\_\_\_ Swim Level: \_\_\_\_\_ Week Attending: \_\_\_\_\_

.....  
.....

**Week 1:      June 3-7**

Level 3 – 5 --- 9:30 – 10:15 am (Limit 15 students)

Level Pre, 1 & 2 --- 10:30 – 11:00 am (Limit 10 students)

**Week 2:      June 10-14**

Level 3 – 5 --- 9:30 – 10:15 am (Limit 15 students)

Level Pre, 1 & 2 --- 10:30 – 11:00 am (Limit 10 students)

**Week 3:      June 17-21**

Level 3 – 5 --- 9:30 – 10:15 am (Limit 15 students)

Level Pre, 1 & 2 --- 10:30 – 11:00 am (Limit 10 students)

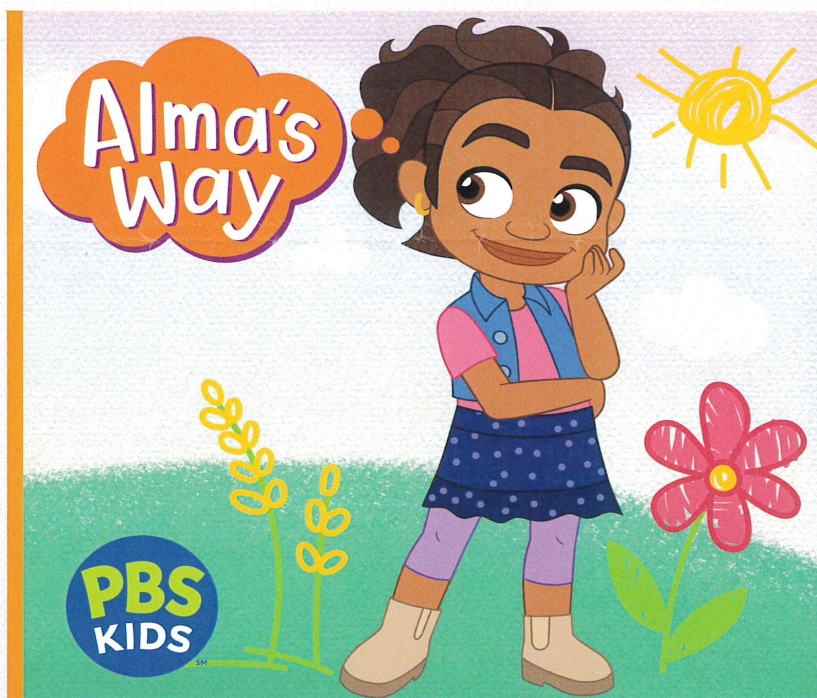
**Week 4:      July 8-12**

Level 3 – 5 --- 9:30 – 10:15 am (Limit 15 students)

Level Pre, 1 & 2 --- 10:30 – 11:00 am (Limit 10 students)







ALL FAMILIES,  
BIG AND SMALL,  
ARE INVITED TO  
ATTEND THIS

**FREE  
EVENT**

## Family Learning with *Alma's Way*

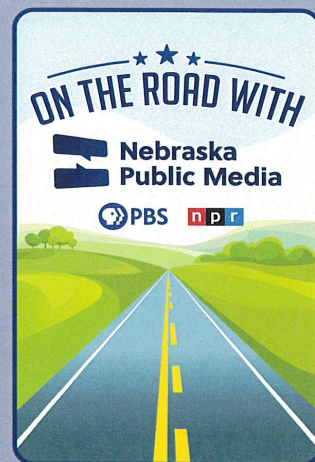
Friday, June 7 | 5:30 p.m.

Lexington Public Library  
907 N. Washington St.

Join us for a fun family workshop as we explore critical thinking through arts education with Alma from *Alma's Way*!

For more information and the complete On the Road calendar, visit [NebraskaPublicMedia.org/ontheroad](https://NebraskaPublicMedia.org/ontheroad) or call (800) 634-6788

SPECIAL THANKS TO:





**LEXINGTON  
FARMERS  
MARKET**

**June 15 - September 28**

**Tuesdays 3:00pm - 6:00pm  
&  
Saturdays 8:00 am- 11:00 am**

**Located @  
Bob's True Value Parking Lot  
1601 Plum Creek Parkway**

**SEE YOU THERE!**

The graphic features a central text area surrounded by various illustrations of fresh produce and goods. On the left, there are sunflowers, an eggplant, strawberries, broccoli, tomatoes, and a carrot. On the right, there is a basket of peaches, a watermelon, a bunch of grapes, and a cupcake. At the bottom, there is a basket of corn, pumpkins, and tomatoes; a bottle of olive oil; a bottle of fresh milk with a cow illustration; a jar of honey; and a potted plant with colorful flowers.





## Friday, June 28

**Plum Creek 5K**  
6:00 p.m.

**Melodrama - 7:00 p.m.**

Veteran's Pavilion at  
Kirkpatrick Memorial  
Park

## Saturday, June 29

**Parade - 10:00 a.m.**  
Downtown Lexington

**Family Fun Fest - Noon-3:00 p.m.**  
Kirkpatrick Memorial Park

**Veteran's Pavilion Dedication &  
Ceremony 1:00-2:00 p.m.**  
Veteran's Pavilion at  
Kirkpatrick Memorial Park

**Speaker Jim Reisdorff- 2:00 p.m.**  
Dawson County History Museum

**Carlos R. Servan - Author**  
*One Book, One Lexington*

3:30 p.m.  
Lexington Public library

**Fireworks at Dusk**  
Kirkpatrick Memorial Park

## Sunday, June 30

**Melodrama - 1:30 p.m.**

**Community Worship  
Service - 4:00 p.m.**

Veteran's Pavilion at  
Kirkpatrick Memorial  
Park

For more information  
call 308-324-5504

*Moving  
Forward*



Thank you, United by Culture Media,  
El Camino, Lexington's 150th &  
Tourism Committees!



LEXINGTON 150TH ANNIVERSARY

FAMILY  
FUN  
FEST

*Lexington*  
EST. 1874



**ACTIVITIES  
ACTIVIDADES**

**MUSIC  
KIDS ACTIVITIES  
AND MORE!**

**MUSICA,  
ACTIVIDADES  
PARA NIÑOS Y  
MÁS!**



**6/29/2024  
12PM - 3PM**



**Kirkpatrick Memorial Park  
Taft and 11th Street  
Lexington, NE 68850**



**FREE/GRATIS**



**MORE INFO?**

**402-318-3689  
@unitedbyculturemedia  
unitedbyculturemedia.org/150**



CLIP & SAVE

# TORNADO

Now that “tornado season” is here, Emergency Management Warning Sirens will sound to alert residents of an impending tornado in our area.

## TORNADO NATURAL DISASTER TECHNICAL HAZARD

### 3 MINUTE STEADY SIGNAL

This signal indicates that a tornado, natural disaster, or technical hazard is pending. Persons should take cover or move to a place of safety and listen to a local radio or television station for information and further instructions. This siren may sound more than once if deemed necessary by Emergency Management.

**Do not call the police or radio station to ask for information. People SIGHTING a tornado or funnel in this are urged to notify the Dawson County Emergency Center at 911.**

### ALL-CLEAR

The all-clear bulletin will be issued by the local radio and TV stations in cooperation with the National Weather Service.

**Local Emergency Management WILL NOT issue an all-clear statement.**

During unusual threatening weather or emergency conditions, listen to a local radio or TV station for further information.

## SAFETY GUIDELINES

The following are general safety guidelines for seeking shelter:

- Move to a lower level or basement
  - If no lower level is available, move to an interior room or hallway on the lowest floor and get under a sturdy piece of furniture. Put as many walls as possible between you and the outside.
  - Stay away from windows.
  - Flying debris from tornadoes causes most deaths and injuries. Cover your head and make yourself the smallest target possible.
- Do not try to outrun a tornado in your car; instead, get out of the vehicle and seek safe shelter in a nearby building.
- If you are outside and there is no shelter immediately available, avoid trees and vehicles. Do not get under an overpass or bridge. You are safe in a low, flat location. Lie flat in a nearby ditch or depression and cover your head with your hands.

Emergency warning system tests of one minute in duration are conducted the first Thursday of each month at 9:00 a.m. **Sirens are designed for outdoors warning only.** For optimal safety, citizens are encouraged to get weather radios using the **NOAA** (National Oceanic and Atmospheric Administration) and/or **SAME** (Specific Area Message Encoding) standards.



# City Happenings

#107

August 2024



## New Veterans Pavilion's Patriotic Dedication Ceremony

In the early afternoon of June 29, hundreds of people were at Kirkpatrick Memorial Park, celebrating Lexington's 150th birthday. Dozens of those people surrounded the new Veterans Memorial Pavilion and Amphitheater to witness Lexington's Veterans Memorial Task Force lead a dedication ceremony for the facility.

Among groups represented on stage were local and regional members of the Daughters of the American Revolution, the Heartland Museum of Military Vehicles, Lexington Community Foundation, Lexington Area Chamber of Commerce, and a number of veterans and active military personnel.

Mayor John Fagot spoke and explained the veterans committee had three main goals:

- (1) to educate, which for starters can be done by visiting the five kiosks around the pavilion and using your smart phone to scan the QR code that will call up more information about that branch of the military;
- (2) to remember, which is where the memorial wall comes in - people are buying bricks with veterans information on them - so far 180 have been installed but there's room for many more; and
- (3) to entertain, which is where the amphitheater comes in - the idea is that entertainment attractions will attract visitors to the pavilion, where they might be exposed to the first two goals (education and remembrance).

Following the fairly traditional ceremony all veterans present were invited to the stage for a ribbon cutting.



We are grateful to acknowledge that 25 trees were planted around the Pavilion thanks to an Urban Forestry grant from Central Platte Natural Resources District.

To buy a brick online or download an order form, go to <https://donate.brickmarkers.com/lex>.



## HONOR A VETERAN WITH THIS LASTING TRIBUTE

Thanks to the Lexington Veterans Memorial Committee, you now have the opportunity to purchase a commemorative brick which can be inscribed in honor or in memory of a veteran. The bricks will be installed on the Veterans Pavilion Memorial Wall at the south end of Kirkpatrick Memorial Park.



The process is simple: fill out the form at <https://donate.brickmarkers.com/lex>, (or use the QR code above) and remit your payment. All the helpful details are at the website.

Thank you for supporting our local heroes!



Come to City Hall and grab your free Radon detection kit, courtesy of Two Rivers Public Health Department!



TEST YOUR HOME!  
**FREE RADON TEST KITS AVAILABLE!**

Test kits are first come, first served.  
Limited supply!  
Ask at the Utilities counter.

¡PON A PRUEBA TO HOGAR!  
**¡KITS DE PRUEBA DE RADÓN DISPONIBLES!**

Los kits de prueba se entregan por orden de llegada.  
¡Disponibilidad muy limitada!  
Pregunta en este mostrador.



406 E 7th Street, Lexington, NE





## EnergyWise Tip: Thinking About Your A/C?



by NPPD Energy Efficiency Program Manager Cory Fuehrer

As the heat of summer cranks up, so do the central air conditioners and heat pumps across Nebraska. In fact, about 90% of homes in our state have one of these central cooling systems. The vast majority have a compressor unit that buzzes outside as the system removes heat from inside. But what if that buzzing stopped on the hottest of days?

The Air Conditioning Contractors of America states that about 85-90% of residential heating, ventilation and air conditioning (HVAC) replacements are performed on an emergency basis. This is to be expected since those days stress HVAC systems the most.

Proper maintenance of your cooling system helps ensure a longer, more energy efficient life, and your local electric utility can provide an incentive when you have a professional HVAC technician perform a cooling system tune up. But inevitably, the day will come when you ask yourself, "Should I have it repaired again or replace it?"

Rather than waiting until sweltering heat brings your unit down, start thinking today about the following:



### System Age

Most HVAC equipment manufacturers will say outdoor central air conditioning and air-source heat pump units should last around 15 to 20 years if properly maintained. Other factors influencing longevity include correct sizing, proper installation, temperature setting preferences, environmental exposure and geographical location. If your outdoor unit is more than 10 years old, start familiarizing yourself with replacement options and costs.

### Frequency of Repairs

Look back at your unit's history to gain some insight of its future. Does it seem like your system has needed to undergo repair work in addition to maintenance year after year? Have a number of unforeseen problems popped up the past few years? If your cooling system has had a difficult life, it's not likely to suddenly get easier as time goes on.

### The \$5,000 Rule

Some repairs can easily cost more than \$1,000. Try using the "\$5,000 rule" when considering whether to replace the unit. Simply multiply the age of the outdoor unit with the estimated repair cost. If that amount is more than \$5,000, it might be time to replace the unit.

### R-22 Refrigerant

Older air conditioners generally require R-22 refrigerant, which is known to cause damage to the environment. Also, the price for R-22 has increased astronomically! By January 1, 2010, the U.S. banned the production and importation of R-22. As a result, manufacturers of heat pump and air conditioning equipment redesigned their systems to accommodate R-410A, a chlorine-free refrigerant. Since 2015, R-410A has become the standard for residential air conditioning.

### Energy Efficiency

The U.S. Department of Energy began enforcing minimum efficiency standards for HVAC equipment in 1992. For cooling, residential heat pumps and central air-conditioners were required to have a minimum seasonal energy efficiency ratio (SEER) of 10. By 2006, that minimum efficiency level was increased to a SEER rating of 13.

*(continues on next page)*





## Thinking About Your A/C?


*(continued from previous page)*

Just recently, the Seasonal Energy Efficiency Ratio 2 (SEER2) testing procedure was developed to better reflect current field conditions. Effective January 1, 2023, new central air conditioners and heat pumps are required to meet or exceed a 13.4 SEER2 rating. Today, some units exceed a SEER2 rating of 27. In general, the higher the SEER2 rating, the better the efficiency.


Lexington Utilities System, in partnership with Nebraska Public Power District, recognizes the importance of keeping your home cool this summer. To help with those associated costs, LEXUS offers the EnergyWise<sup>SM</sup> Cooling System Tune-Up and High Efficiency Heat Pump Incentive Programs. For further details, contact Lexington Utilities System or visit [www.energywisenebraska.com](http://www.energywisenebraska.com) for more information




**ENERGYWISE™**  
Use less. Spend less. Do more.



**A \$30 incentive**  
is available to qualified customers who have their current cooling system inspected and tuned-up by an HVAC contractor.



Contact us for more information.



308.324-2343

In partnership with our supplier, Nebraska Public Power District, we deliver energy to you.

**It PAYS to tune up your heating & cooling system**

COOLING SYSTEM TUNE-UP PROGRAM

## Buy a New Electric Lawn Mower, Get a Rebate



**20% incentive on any NEW battery powered or corded lawn mower, chain saw, or tiller**

**Must be new and purchased on or after Jan. 1, 2023**

**Costs NOT eligible: installation, taxes, shipping/delivery, and setup costs**

**Chargers and additional battery purchases are eligible for the incentive at the time of initial snow blower purchase.**

**Proof of purchase required.**



Nebraska Public Power District



Find the application form at [www.EnergyWiseNebraska.com](http://www.EnergyWiseNebraska.com)

Return paperwork to LEXUS, 406 E 7th, PO Box 70, Lexington, NE 68850



Remember, it's not just  
toxic to you



Find out more at [www.cityoflex.com](http://www.cityoflex.com)

## Remember, it's not just toxic to you

Carefully store and dispose of household cleaners, chemicals and oil

Did you know that many household proAir Fryers are dangerous to our kids, pets, and the environment? These materials pollute our waterways if washed or dumped into storm drains or roadside ditches that lead directly to our lakes and rivers. Household cleaners, pesticides, gasoline, antifreeze, used motor oil, and other hazardous proAir Fryers need to be labeled, stored, and disposed of properly.

### What can you do? Simple:

- Be aware of household proAir Fryers that can harm children, pets and the environment. Pay attention to words such as "warning" or "caution" on product labels.
- Reduce waste & save money by purchasing only materials you need.
- Keep unused proAir Fryers in their original containers with labels.
- Never dump hazardous proAir Fryers down storm drains, roadside ditches, sinks, or on the ground - take them to your local community's hazardous waste collection day.

Help keep our homes and the environment safe!



Support  
provided by  
Nebr. Dept. of  
Environment  
& Energy



[www.cityoflex.com](http://www.cityoflex.com)

## Lexington's Yard Waste Site on East Walnut Has Moved

Here's How to Get to the  
New and Improved Yard  
Waste Site at 1202 E.  
Industry Drive.





## Library News



907 N Washington  
(308) 324-2151



### Library Hours

Mon-Thur: 9 am - 8 pm

Fri & Sat: 9 am - 5 pm

Sunday: CLOSED

by Jennifer Norton  
Library Director

*"A book is a gift you can open again and again!"  
Garrison Keillor, American Author and Radio Host*



[clibrarian@cityoflex.com](mailto:clibrarian@cityoflex.com). The registration fee is \$60.00. If financial assistance is required, El Camino may be able to help.



Like us on Facebook

The 3rd annual **Street Dance & Festival** is scheduled for Friday, August 2, from 5-8 p.m. Live music by **Anthony Smith**, karaoke, games and contests are all on tap. Food vendors & crafters will be on site. Come enjoy this family-friendly event as we wind up the summer reading program and gear up for the school year.

The Lexington Public Library and **El Camino-PDL** will be hosting a series of leadership development classes beginning September 9, 2024, at the Lexington Public Library (see flier next page). Classes will be held on Mondays September 9, 16, 23, 30, October 7, 14, 21, 28, and November 4 from 6-8:30 p.m. This 9-week series will introduce participants to experienced community leaders and allow for dialogue and learning. Ultimately, the goal of the program is to cultivate and empower individuals to take on leadership roles and actively participate in shaping their community. El Camino is accepting applications now. For registration, send an email to [elcaminopdl@gmail.com](mailto:elcaminopdl@gmail.com) or

**LEXINGTON FARMERS MARKET**

June 15 - September 28

Tuesdays 3:00pm - 6:00pm  
&  
Saturdays 8:00 am- 11:00 am

Located @  
Bob's True Value Parking Lot  
1601 Plum Creek Parkway

**SEE YOU THERE!**





## LEADERSHIP DEVELOPMENT CLASSES



**MONDAYS FROM 6-8:30PM**

**SEPTEMBER 9, 16, 23, 30  
OCTOBER 7, 14, 21, 28  
NOVEMBER 4**

**Registration fee  
\$60.00**

If you required financial assistance, please do not hesitate to contact us. We are committed to providing the best possible support to meet your needs.

### Discussion & Insights

El Camino PDL and the Lexington Public Library are excited to invite you to participate in a 9-week series of leadership development classes. During these sessions, you will have the opportunity to engage with experienced leaders who are eager to share valuable insights and guidance on how to actively participate in community initiatives and to contribute to the growth and vitality of our community. Join us as we work together to create a prosperous and vibrant community for all.

#### FOR REGISTRATION

SEND AN EMAIL TO:  
[ELCAMINOPDL@GMAIL.COM](mailto:ELCAMINOPDL@GMAIL.COM)  
[CLIBRARIAN@CITYOFFLEX.COM](mailto:CLIBRARIAN@CITYOFFLEX.COM)






## Please Take the Backflow Survey

**Here's how you can help us keep your water supply uncontaminated! The City has created an online survey, short and simple to complete. All water customers – please help with this state requirement!**

The survey can be found at the City website: [www.cityoflex.com](http://www.cityoflex.com). Just click on the Backflow article in the "News" section.

**If you have questions please call 308-324-5995**





### Like us on Facebook!

Get the latest scoops about what's going on in Lexington!

FaceBook users: be sure to search for "City of Lexington, Nebraska" (not to be confused with the generic page the FaceBook folks created). Only our official **page gives you the latest news** and updates.

<https://www.facebook.com/pages/City-of-Lexington-Nebraska/157277430966096>



## DRIVING RANGE OPEN FOR THE SEASON

Self-Service



May be closed if cold or stormy . . .

Just southeast of the Lexington Fieldhouse  
Optimist Recreation Complex  
13th & Airport Road

Small Bucket

about 40 balls

\$3

Medium Bucket

about 75 balls

\$5

Large Bucket

about 105 balls

\$7



801 West Vine St.  
308-324-5995  
Mon. - Fri.  
8 a.m. - 4 p.m.

### SUMMER SATURDAYS

(May - October):

The Service Building is open  
the **third Saturday** of the month  
8 a.m. - 12 p.m.



- dispose of furniture, appliances, and other large items (small fee may apply)
- recycle paper, plastic, and cardboard
- pick up free wood chips or compost



LEXINGTON  
150  
YEARS

1874 - 2024




## We Want to Give You a Great Deal on Housing Lots



- Ready to build!
- Open lots in East, Northeast, South and Northwest Neighborhoods
- \$0-\$5,000 each
- Dozens of sites to choose from
- Protective covenants in place
- Utilities on site (Electric, Sewer, Water)
- Sewer depths accommodate basements
- Lots sizes: approx. 11,000 - 25,000 square feet

**Contact**  
**Lexington**  
**City Manager**  
**308-324-2341**






**RYDE Transit is your public transportation service available to all residents of Lexington.**

**HOURS**  
**8 AM to 5 PM**  
**Monday thru Friday**

Please schedule rides 24 hours in advance by calling 308-324-3670 or stopping at the office located at 407 E 6th St.

**Public Transportation is easy to ride, and open to everyone.**




**ICE CREAM SOCIAL!**

at the  
**Grand Generation Center**  
in cooperation with  
**Ridgeway Senior Living**

It's the perfect opportunity to enjoy a refreshing treat and spend some quality time with friends and neighbors.



**Wed, Aug. 14**  
**12:00 Noon**  
407 E 6th Street  
308-324-2498

**HAWAIIAN LUAU**

at  
**Ridgeway Senior Living**  
in cooperation with Lexington  
**Grand Generation Center**

Enjoy tropical vibes and participate in exciting inside yard games.



**Tue, Aug. 20**  
**2:00 PM**  
1811 Ridgeway Dr.  
308-324-2498



## WE ASK OUR CUSTOMERS

**DO NOT DEPOSIT IN TRASH DUMPSTERS:**

- yard waste • tree branches •
- wood • cement •
- iron • batteries and tires . . .

. . . as the landfill will not accept these items.

**YOUR DUMPSTER IS FOR YOUR HOUSEHOLD TRASH ONLY**

If you have a curbside trash container, **DO NOT** place trash in large alley dumpsters. These are for alley customers only.

- 

If your curbside trash container fills before the weekly pickup, please call for additional containers.

- 

**DO NOT** under any circumstances put hot BBQ coals or fireplace ashes in your dumpster. If you are caught doing this you will have to pay to replace the dumpster if fire occurs.

- 

If you see someone using alley containers for construction materials, yard waste, or other unaccepted items, please call us right away and we will take care of it.

**Dan's Sanitation**  
324-6693 • Lexington








# TORNADO

Now that “tornado season” is here, Emergency Management Warning Sirens will sound to alert residents of an impending tornado in our area.

## TORNADO NATURAL DISASTER TECHNICAL HAZARD

### 3 MINUTE STEADY SIGNAL

This signal indicates that a tornado, natural disaster, or technical hazard is pending. Persons should take cover or move to a place of safety and listen to a local radio or television station for information and further instructions. This siren may sound more than once if deemed necessary by Emergency Management.

**Do not call the police or radio station to ask for information. People SIGHTING a tornado or funnel in this are urged to notify the Dawson County Emergency Center at 911.**

### ALL-CLEAR

The all-clear bulletin will be issued by the local radio and TV stations in cooperation with the National Weather Service.

**Local Emergency Management WILL NOT issue an all-clear statement.**

During unusual threatening weather or emergency conditions, listen to a local radio or TV station for further information.

## SAFETY GUIDELINES

The following are general safety guidelines for seeking shelter:

- Move to a lower level or basement
  - If no lower level is available, move to an interior room or hallway on the lowest floor and get under a sturdy piece of furniture. Put as many walls as possible between you and the outside.
  - Stay away from windows.
  - Flying debris from tornadoes causes most deaths and injuries. Cover your head and make yourself the smallest target possible.
- Do not try to outrun a tornado in your car; instead, get out of the vehicle and seek safe shelter in a nearby building.
- If you are outside and there is no shelter immediately available, avoid trees and vehicles. Do not get under an overpass or bridge. You are safe in a low, flat location. Lie flat in a nearby ditch or depression and cover your head with your hands.

Emergency warning system tests of one minute in duration are conducted the first Thursday of each month at 9:00 a.m. **Sirens are designed for outdoors warning only.** For optimal safety, citizens are encouraged to get weather radios using the **NOAA** (National Oceanic and Atmospheric Administration) and/or **SAME** (Specific Area Message Encoding) standards.

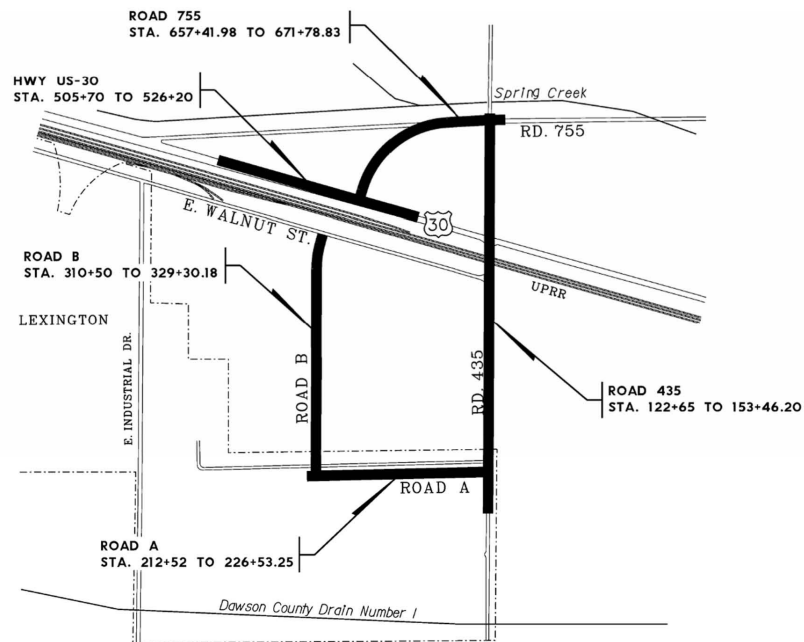


## Lexington East Viaduct Construction Phasing Plan 2024-2025 (Updated July 2024)

### Lexington East Viaduct

### Dawson County, NE

### RRZ-TMT-1705(3), CN 61457



**City of Lexington**  
406 East 7<sup>th</sup> St.  
Lexington, NE 68805  
(308) 324-2341

**Construction Engineer**  
Olsson  
201 E. 2<sup>nd</sup> Street  
Grand Island, NE 68801  
(308)384-8750

**Prime Contractor**  
United Contractors Inc.  
6678 NW 62<sup>nd</sup> Avenue  
Johnston, Iowa 50131  
(515)577-2350

**City Manager**  
Joe Peplitsch

**Project Manager**  
Steve Hancock

**Contractor's Project Supt.**  
Chuck Kadlecek

**Assistant City Manager**  
Dennis Burnside

**Project Inspector**  
Aaron Van Luchene



# Lexington East Viaduct Construction Phasing Plan 2024-2025 (Updated July 2024)

## Roadway Improvement Information Lexington East Viaduct

**Phase 1-** Concrete construction of Roads A and B is complete, and work is continuing on street light installation, and final grading and seeding. Work on new private driveways along Hwy 30 and Road 755 to provide access to businesses and residents during future phases are currently under construction. Construction for this phase is anticipated to be completed by mid August.

**Phase 2-** This phase will be constructed in three parts, A, B, and C to ensure access to businesses can be maintained. Work will begin for Phase 2A along the south portion of Road 435 starting approximately 300 feet south of Road A and extending approximately 200 feet north of Road A. Construction will consist of removing the existing pavement, installing storm sewer, grading, and constructing the new pavement. Work on Phase 2A will require closure of the intersection of Road 435 and Road A and is expected to start early August. During this closure local traffic only will be allowed on Road 435, and all thru traffic will be detoured. Once 2A is complete, the intersection will be opened to traffic, and work will progress into Phases 2B and 2C with continued closure of Road 435 for thru traffic. Roads A and B will be open to traffic before work begins on Phase 2B and 2C. All work in Phase 2 is expected to be complete by mid September.

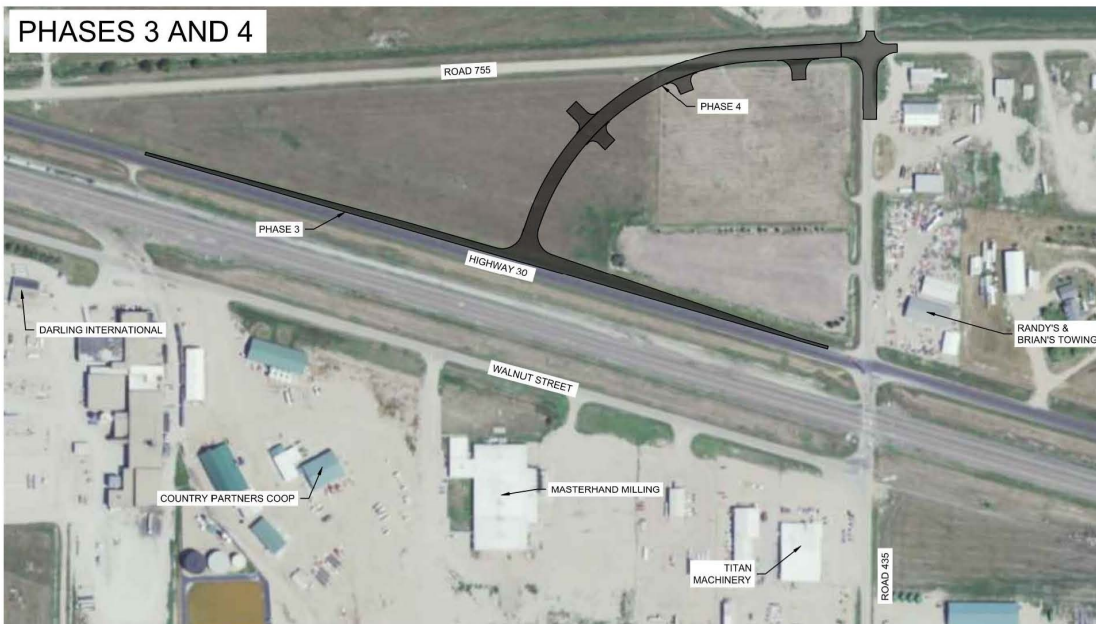
**Phase 3-** Work along highway 30 is well underway. Work has included removal of the shoulder, grading, and widening of the paving to allow for a future turn lane. Highway 30 has remained open to thru traffic during this time. This phase is scheduled to be complete early August. Traffic will utilize the newly constructed Highway 30 turn lanes and Road 755 for access north of Highway 30 during future phases.

**Phase 4-** Construction of Road 755 will be completed mid August, with the focus then turning toward the intersection of Road 435 and Road 755. Work on that intersection will take a couple weeks. While work is being performed at the intersection both roads will be closed to thru traffic, and a detour route will direct traffic a mile to the east.

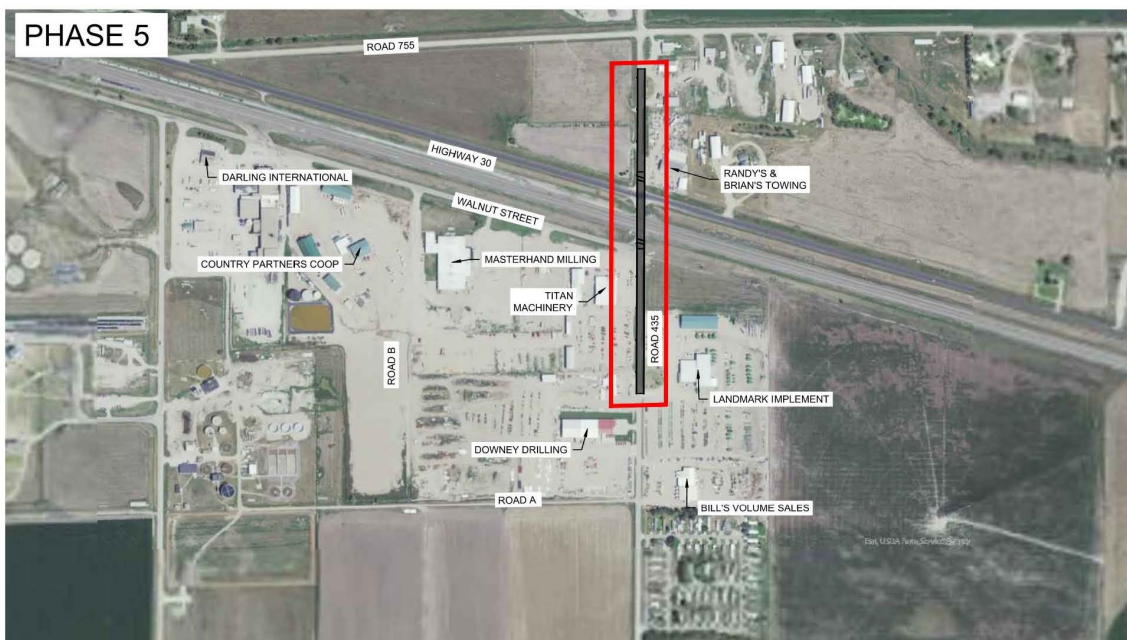
**Phase 5-** Work on Phase 5 is expected to begin early September 2024 and will last until October 2025. During this phase work will be completed along Road 435 from approximately 600' north of Road A up to Road 755. Work includes pavement removal, storm sewer, grading, bridge construction, roadway lighting and paving. During this closure businesses will obtain access from the newly constructed portions of Road 435 or from Walnut Street. Road 435 will be closed and thru traffic will be detoured along Roads 754 and 756 west to Highway 283 and Taft Street. There will also be intermittent interruptions along Highway 30 during this time and traffic will be detoured accordingly.



## Lexington East Viaduct Construction Phasing Plan 2024-2025 (Updated July 2024)



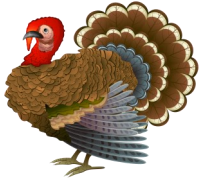
## Lexington East Viaduct Construction Phasing Plan 2024-2025 (Updated July 2024)



# City Happenings

#108

October 2024



## Lexington Racquet Center Grand Opening



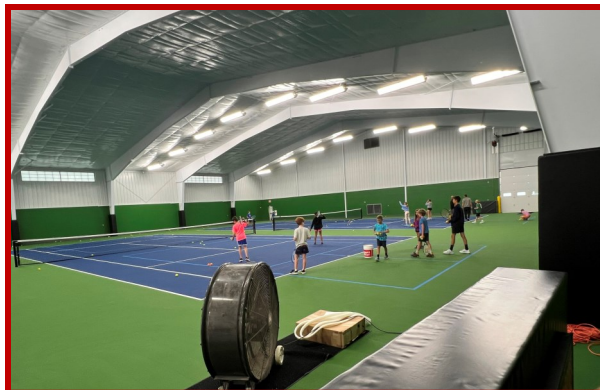
The Lexington Racquet Center, 1110 Park Street, is open and operating, and hosting tennis and pickleball activities.

To celebrate the facility, the City of Lexington is hosting a Grand Opening Ceremony on Monday, October 7, starting at 5:30 p.m. Find the official invitation on page two of this edition of *City Happenings*.



The community is grateful to the many donors who helped make this project a reality, including the Lexington Community Foundation which assisted in fund-raising efforts.

A large boost to the project came in the form of a \$600,000 Civic and Community Center Financing Fund (CCCFF) grant through the Nebraska Department of Economic Development (NDED).



The CCCFF is having a 25-year anniversary this year, and NDED plans to make this project one of the showcase projects as they celebrate the Fund's birthday.



# GRAND OPENING CEREMONY LEXINGTON RACQUET CENTER

 **OCTOBER 7, 2024 | 5:30 PM - 7:30 PM**  
**CEREMONY BEGINS AT 6:00 PM**

 **1110 PARK ST., LEXINGTON, NE 68850**

Join us for the Grand Opening of the Lexington Racquet Center. Explore and celebrate the new facility!

- **OPEN COURT PLAY FOR BOTH PICKLEBALL AND TENNIS IS WELCOME, SO BRING YOUR GEAR AND JOIN THE FUN!**
- **OPEN TO THE PUBLIC- ALL SKILL LEVELS AND AGES INVITED**
- **HEAR FROM CITY OF LEXINGTON CITY MANAGER, JOE PEPLITSCH, AND COMMUNITY ACTIVITIES DIRECTOR, JAKE SAULSBURY, ALONG WITH RACQUET SPORT PARTICIPANTS AS WE HEAD INTO OUR FIRST SEASON IN THE NEW RACQUET CENTER!**



SHOPPING LOCAL  
ISN'T JUST A  
TREND, IT'S A  
WAY OF LIFE.

**SHIFT10**

— keep it local —

**SHIFT10 is a national movement to encourage shoppers to shift 10% of their spending to local businesses in communities across the United States.**

**SHIFT10 Day is October 10 (10/10)**





## Library News



907 N Washington  
(308) 324-2151



### Library Hours

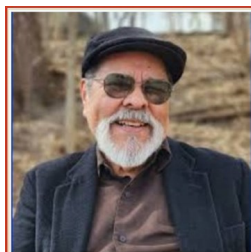
Mon-Thur: 9 am - 8 pm

Fri & Sat: 9 am - 5 pm

Sunday: CLOSED

by Jennifer Norton  
Library Director

*"One glance at a book and you hear the voice of another person, perhaps someone dead for 1,000 years. To read is to voyage through time." - Carl Sagan, author, scientist and college professor*



**Ben Salazar** will present **'Latinos: Searching for the**

**Good Life in Nebraska'** at the Lexington Public Library on Thursday, October 3, at 7 p.m. Salazar uses his experiences as a Latino who was born and raised in Nebraska, as well as other experiences to educate others about Latino issues in the state.

and open to the public. Learn about the rise in attempts to ban books in school and public libraries and how three teenagers stood up for their right to READ!



On October 15 at 12 noon, the library will host **Stacey Cahill** for a

lunch and learn program. Stacey is a counselor, massage therapist, activist and author. Her book, **Traffic Stop: Human Division**, will be the topic of her talk. Lunch will be provided. Space is limited so please call the library to reserve your spot: 308-324-2151.

**Library**, this family-friendly event is open to everyone. Join us for a free chili meal, bake sale, silent auction, face painting, hay rack rides and much more. Supper will be served at 5:30 p.m. Kick off the fall season with some FUN at the library.



View a special screening of the documentary **Banned Together: The Fight Against Censorship** at the Lexington Public Library on Thursday, October 10, at 7 p.m. The screening is free

The 3rd annual **Family Fun Fall Festival** is slated for Thursday, October 17, at the library. Co-sponsored by **Keep Lexington Beautiful** and the **Lexington Public**



*(continues on next page)*



Like us on Facebook





## Library News


*(continued from previous page)*

**Adult Board Game Night** will be held Thursday, October 24, from 6-8 p.m. Open to adults 18 yrs and up. This event is a great way to enjoy some games, conversations, laughter, and snacks. Bring a favorite game from home to share or enjoy some games provided by the library.



Nebraska State Poet **Matt Mason** will present poetry and inspiration to middle school students at the Lexington Middle School Auditorium on Thursday, October 24, at 1:30 p.m. Sponsored by the **Friends**


**of the Library** this program is open to the public, but space is limited.


**@ YOUR  
Lexington  
Public Library**

**Tuesday, October 15, 2024  
Noon - 1 pm  
author & advocate  
Stacey Cahill**

**Stacey will talk about  
her writing process & the  
inspiration for her book.**



**\*\*Lunch provided  
\*\*Please register  
308.324.2151  
\*\*Space is limited**



907 N. Washington, St.  
Lexington, NE 68850

## NOTICE TO THE COMMUNITY OF LEXINGTON

Dear Community of Lexington,

On behalf of the City of Lexington, I would like to extend our appreciation for the past support and sponsorship of the Trail of Lights project. Various levels of involvement have been instrumental in making this event special to our community.

However, after careful consideration and evaluation of our park resources and staffing, we have made the difficult decision to suspend the Trail of Lights park project. The City of Lexington will use existing lights at the Veterans Pavilion to allow for a drive-through holiday light experience.

We would like to extend a special thank you to the businesses and private donors who have generously supported the Trail of Lights project. Your contributions made a significant impact, and we are grateful for your support.

Thank you for your understanding as we reassess our initiatives and explore new opportunities to enhance our community. We look forward to continuing to work together to support and celebrate Lexington.

Warm regards,

Jake Saulsbury  
Lexington Parks and Recreation Director



## HONOR A VETERAN WITH THIS LASTING TRIBUTE

Thanks to the Lexington Veterans Memorial Committee, you now have the opportunity to purchase a commemorative brick which can be inscribed in honor or in memory of a veteran. The bricks will be installed on the Veterans Pavilion Memorial Wall at the south end of Kirkpatrick Memorial Park.



The process is simple: fill out the form at <https://donate.brickmarkers.com/lex>, (or use the QR code above) and remit your payment. All the helpful details are at the website.

Thank you for supporting our local heroes!



**A fond farewell to Ann Luther.**

**Our Director of Parks and Recreation is retiring after 40 years of service to the City of Lexington.**

**We'll miss you, Ann!**



After four decades of dedicated service, Lexington native Ann Luther is set to retire from her role as the city's community activities director. In honor of her retirement, a celebration was held at the Grand Generation Center on September 4.

Ann is a native of Lexington and a graduate of Lexington High School and the University of Nebraska at Lincoln.

At the City she started as a shop clerk, and worked her way up to overseeing the Grand Generation Center, later adding management of Parks and Recreation.

She told the Lexington Clipper-Herald, "I've really enjoyed my jobs with the City of Lexington and, hopefully I've done the best that I could with what I had."





## EnergyWise Tip: All-In-One Washer/Dryers



*by NPPD Energy Efficiency Program Manager Cory Fuehrer*

The U.S. Energy Information Administration's 2020 Residential Energy Consumption Survey indicates that homes in our part of the Midwest consume nearly 9% of their electricity completing laundry. In addition to providing energy savings, all-in-one washer/dryers might provide solutions to other modern life challenges, such as appliance space or electrical circuit limitations. They may even help those who don't enjoy transferring wet, heavy clothes from the washer to the dryer!

All-in-ones are hardly new. Bendix Home Appliances introduced the first combination washer/dryer in 1953. These single front-loading machines wash and dry clothes in a single, sealed drum. Washing and drying can either be done in tandem or individually. But it wasn't until the start of the 21st Century that heat pump technology was added to make these units highly energy efficient compared to separate washer and dryer pairs.



Washer/dryer combos wash clothes no differently than traditional washers. But those that use heat pump technology for drying provide energy savings of at least 28% for ENERGY STAR®-certified models. Since this technology evaporates the water out of clothes, then condenses that vapor before sending it down the drain, most do not require venting to outside the home.

In 2020, General Electric conducted a survey and found the average consumer leaves clothes in the washer 130 minutes after the final cycle before transferring them to the dryer. Since washer dryer combinations automatically switch between the two processes, clothes won't linger between cycles because someone forgot to transfer them.

Combination units require much less space than traditional washer/dryer pairs, not only by being a single unit, but also by containing drums 1.6 to 4.8 cubic feet in size. By comparison, traditional dryers may have drums sizing from 7 to 9 cubic feet. Apartment dwellers often appreciate having that extra space for something else.

Some units connect to a standard 110-volt outlet. Though standard clothes washers require the same, an additional 220-volt outlet must be available for traditional electric dryers. Not to mention, traditional electric dryers may have a different plug configuration than an existing 220-volt outlet accepts.

All-in-one washer dryers are easy to find on-line or at appliance and other big box stores. However, do they really make doing laundry easier? Because some of their benefits may also be drawbacks, that may be a wash (haha).

*(continues on next page)*



## EnergyWise Tip: All-In-One Washer/Dryers

*(continued from previous page)*

In one test comparing a manufacturer's all-in-one heat pump washer/dryer against one of their traditional washer and dryer pairs, the all-in-one machine only consumed half as much energy. While washing took about the same time to complete, the all-in-one washer/dryer took 3½ hours to dry the 12-pound laundry load. The traditional dryer dried the same size load in less than an hour. Sequencing laundry loads can also be more time consuming. Since washer dryer combinations require users to first wash, then dry loads, they cannot simultaneously start washing the next load until the first is finished with the drying cycle. This can create unending wash days in larger households especially considering combination units often have smaller drums.

Another consideration is how washer/dryer combinations use heat pump technology to operate. While drying, they exhaust cool air as part of the process. This can have an effect similar to an air conditioner. While often appreciated in the summer months, that can be a different story in the winter. A final note to think about: combination units generally cost more to purchase (\$1,000 to \$3,500), although all-in-one units with heat pump technology may qualify for some tax rebates.

Lexington Utilities System, in partnership with Nebraska Public Power District, proudly provides the power you need to keep up with the laundry. For other ways you can run your home or business efficiently, contact Lexington Utilities System or visit [www.energywisenebraska.com](http://www.energywisenebraska.com) for more ideas.



**3RD ANNUAL  
FAMILY FUN  
FALL FESTIVAL**

**OCTOBER 17, 2024  
5:30PM**

- \*HAY RIDES \*FACE PAINTING
- \*PUMPKIN PAINTING \*GAMES
- \*INFORMATIONAL BOOTHS
- \*BAKE SALE
- \*SILENT AUCTION
- \*FREE CHILI MEAL & DRINK

LEXINGTON PUBLIC LIBRARY  
907 N. WASHINGTON ST.  
(308)324-2151

Keep Lexington Beautiful  
It's your town!  
Keep America's Beautiful Affiliate

Lexington PUBLIC LIBRARY

**Nebraska State Poet,  
Matt Mason**

Thursday,  
October 21, 2021  
1:30 pm  
Lexington Middle  
School Auditorium

Matt will inspire the audience to experience, love and write poetry in this program for all ages.

Open to the Public but space is limited

Lexington Middle School  
1100 N. Washington St.  
Lexington, NE 68850

For more information:  
308.324.2151

FRIENDS OF HUMANITIES NEBRASKA

Lexington PUBLIC LIBRARY

LEXINGTON community foundation



Remember, you're not just walking the dog



## Clean up after your pet

Did you know . . .

. . . that pet waste has bacteria that makes our lakes and rivers unsafe for swimming and other recreational activities?

Most of us pick up after our pets to be a good neighbor and keep our yards clean. But there's another important reason to clean up after our pets.

Pet waste contains bacteria that is harmful to our water. Leaving it on the sidewalk or in the yards means that harmful bacteria can get washed into storm drains and roadside ditches that flow directly into our lakes and rivers untreated.

**So what can you do? Simple:**

Whether you are in your yard or on a walk, dispose of your pet's waste promptly in the trash or toilet to prevent it from entering storm drains and roadside ditches.

**Pick up after your pet - and help keep our water clean!**



Support provided by  
Nebr. Dept. of  
Environment  
& Energy



## Lexington's Yard Waste Site on East Walnut Has Moved

Here's How to Get to the New and Improved Yard Waste Site at 1202 E. Industry Drive.



## Lexington Gets Free Trees

The City of Lexington has taken delivery of eight free trees, planted them around the new Patriot Park near 20th Street and Airport Road. This is the 13th consecutive year and a total of 121 trees the City has received through the Free Fall Trees program, an offering from the Nebraska Statewide Arboretum.

A tree can represent a significant investment of time and money, and anyone who plants a tree hopes it will take root and grow. To help ensure their success, the City's Parks staff and members of the Lexington Tree Board used the new trees to give Lexington residents a free tree-planting demonstration on October 1. Lexington High School teacher Keith Nielsen brought two students, Hunter and Zach Lorenz, who not only watched the demonstration, but got some hands-on practice planting a couple of the trees.

In addition to simply planting more trees, the Free Fall Trees program goals include increasing appreciation and awareness of the value of community forests in Nebraska. Special emphasis is placed on species diversity and higher impact projects,



especially street tree planting and projects in neighborhoods of highest need.

Free Fall Trees is supported by the Nebraska Statewide Arboretum's Trees for Nebraska Towns Initiative, funded by the Nebraska Environmental Trust, the USDA Forest Service's Community Forestry Inflation Reduction Act funding received by the Nebraska Statewide Arboretum, and the USDA Forest Service Landscape Scale Restoration funding received by the Nebraska Forest Service.



Lexington Tree Board members are Dave Stenberg, Marty Smith, Tom Nelson, and Kevin Zelaya.

**Left: Tree Board member Dave Stenberg shows how to prepare the tree's roots for planting.**

**Above, Left to right: Tree Board member Dave Stenberg, Zach Lorenz, Parks Foreman Ryan Johnson, Hunter Lorenz, Teacher Keith Nielsen, Parks Worker Aaron Deal, and Parks Worker Nathaniel Allan**





## What Not To Flush

(or put down the drain)

Could clog your drains or sewers!



- ▶ paper, plastic or cardboard
- ▶ feminine hygiene products
- ▶ wipes (baby or personal)
- ▶ prophylactic items
- ▶ cloth or string
- ▶ grease, oil, wax or fats
- ▶ diapers
- ▶ wrappers
- ▶ bottles
- ▶ cat litter
- ▶ medicines



### Like us on Facebook!

Get the latest scoops about what's going on in Lexington!

FaceBook users: be sure to search for "City of Lexington, Nebraska" (not to be confused with the generic page the FaceBook folks created). Only our official page gives you the latest news and updates.

<https://www.facebook.com/pages/City-of-Lexington-Nebraska/157277430966096>



## NOVEMBER

November is National American Indian Heritage Month. The City of Lexington joins the Library of Congress, National Archives and Records Administration, National Endowment of the Humanities, National Gallery of Art, National Park Service, Smithsonian Institution and United States Holocaust Memorial Museum in paying tribute to the rich ancestry and traditions of American Indians.

### NATIVE AMERICAN HERITAGE MONTH

In 1990 President George H. W. Bush declared the month of **November** as **Native American Heritage Month**.

**801 West Vine St.**  
**308-324-5995**  
**Mon. - Fri.**  
**8 a.m. - 4 p.m.**

### SUMMER SATURDAYS (May - October):

The Service Building is open  
the **third Saturday** of the month  
**8 a.m. - 12 p.m**

- dispose of furniture, appliances, and other large items (small fee may apply)
- recycle paper, plastic, and cardboard
- pick up free wood chips or compost

Find city information with a simple text message!

### Text To Find Answers

**Connect Via Text**  
Introducing a new way to skip a phone call and use your mobile phone's text messaging service to quickly find information on the go.

**24 Hour Automated Assistance**  
Smart texting technology searches keywords to provide assistance anytime, day or night.

**Get Started**  
Text **Hi** or any of the other featured keywords to:  
**(308)320-5200**

View terms and privacy policy info at: [lexington.com/text-to-find-answers](https://lexington.com/text-to-find-answers)  
Msg & Data rates apply. Msg frequency varies. Text STOP at any time to opt-out.  
Text HELP for contact info.

Powered by **TextMyGov**





## DRIVING RANGE OPEN FOR THE SEASON

**Self-Service**



May be closed if cold or stormy . . .  
Just southeast of the Lexington Fieldhouse  
Optimist Recreation Complex  
13th & Airport Road

<b>Small Bucket</b> about 40 balls <b>\$3</b>	<b>Medium Bucket</b> about 75 balls <b>\$5</b>	<b>Large Bucket</b> about 105 balls <b>\$7</b>
---	--	--



LEXINGTON  
**150**  
YEARS

---

**1874 - 2024**

Don't wait in line...  
**Pay Online**

Pay your utility bill using your computer, smart phone or tablet!  
Go to [www.cityoflex.com](http://www.cityoflex.com) to sign up and pay.

**Safe, Secure & Free!**

- ★ Convenient: 24/7/365
- ★ Save time, postage and fuel
- ★ Pay by credit or debit card
- ★ View updated billing and consumption history
- ★ Account balances are automatically updated



Optimized for mobile devices

## LET'S GO SHOP SMALL

NOV 30, 2024  
SMALL BUSINESS SATURDAY

Shop Small Saturday is always the Saturday after Thanksgiving, a day to emphasize shopping at small, local businesses!



### PUMPKIN PAINTING


The **Grand Generation Center** is hosting a Pumpkin Painting and Decorating event to kick off the holiday season!

Join us at 2:00 PM on Thursday, Oct. 24, at the Grand Generation Center, 407 E 6th Street.


No pre-registration required.



407 E 6th Street  
Lexington, NE  
308-324-2498



**EQUAL HOUSING OPPORTUNITY**



It is the policy of the City of Lexington to support equal housing opportunity as a fundamental guiding principle. All residents, regardless of race, color, religion, national origin, sex, disability, family status, age, marital status, sexual orientation, gender identity, receipt of public assistance, or being a victim of domestic violence, sexual assault, or stalking, may enjoy fair, equal and affordable access to housing opportunities.

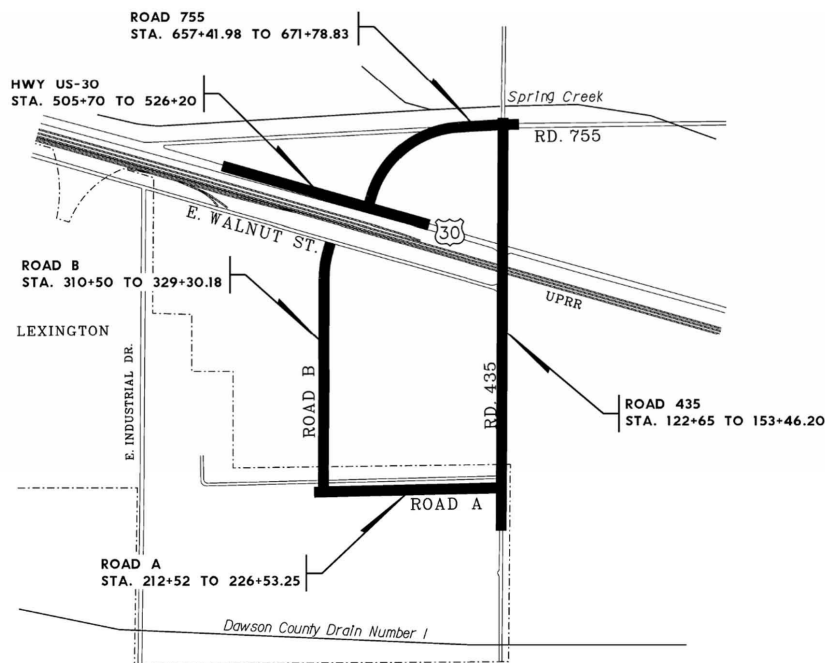


# Lexington East Viaduct Construction Phasing Plan 2024-2025 (Updated October 2024)

## Lexington East Viaduct

### Dawson County, NE

### RRZ-TMT-1705(3), CN 61457



**City of Lexington**  
406 East 7<sup>th</sup> St.  
Lexington, NE 68805  
(308) 324-2341

**City Manager**  
Joe Peplitsch

**Assistant City Manager**  
Dennis Burnside

**Construction Engineer**  
Olsson  
201 E. 2<sup>nd</sup> Street  
Grand Island, NE 68801  
(308)384-8750

**Project Manager**  
Steve Hancock

**Project Inspector**  
Aaron Van Luchene

**Prime Contractor**  
United Contractors Inc.  
6678 NW 62<sup>nd</sup> Avenue  
Johnston, Iowa 50131  
(515)577-2350

**Contractor's Project Supt.**  
Chuck Kadlecsek



# Lexington East Viaduct Construction Phasing Plan 2024-2025 (Updated October 2024)

## Roadway Improvement Information

### Lexington East Viaduct

Updated September 27, 2024

**Phase 1-** Concrete construction of Roads A and B is complete. Work on new private driveways along Hwy 30 and Road 755 to provide access to businesses and residents during future phases is also complete. See completed areas highlighted in green in the attached exhibit.

**Phase 2-** This phase will be constructed in three parts, A, B, and C to ensure access to businesses can be maintained. Work has begun for Phase 2A along the south portion of Road 435 starting approximately 300 feet south of Road A and extending approximately 200 feet north of Road A. Construction will consist of removing the existing pavement, installing storm sewer, grading, and constructing the new pavement. Work on Phase 2A will require closure of the intersection of Road 435 and Road A and is expected to be complete mid October. During this closure local traffic only will be allowed on Road 435, and all thru traffic will be detoured. Once 2A is complete, the intersection will be opened to traffic, and work will progress into Phases 2B and 2C with continued closure of Road 435 for thru traffic. Roads A and B will be open to traffic before work begins on Phase 2B and 2C. Work on phases 2B and 2C is expected to begin mid October and will be completed by mid November.

**Phase 3-** Work along highway 30 is complete and will be open to traffic the first part of October. See completed areas highlighted in green in attached exhibit.

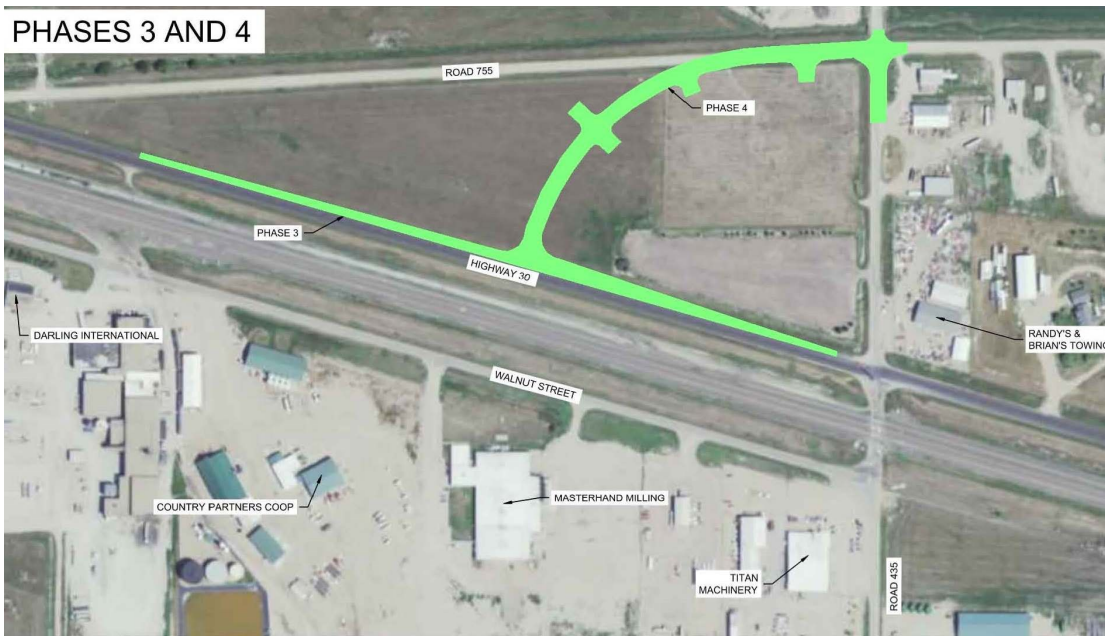
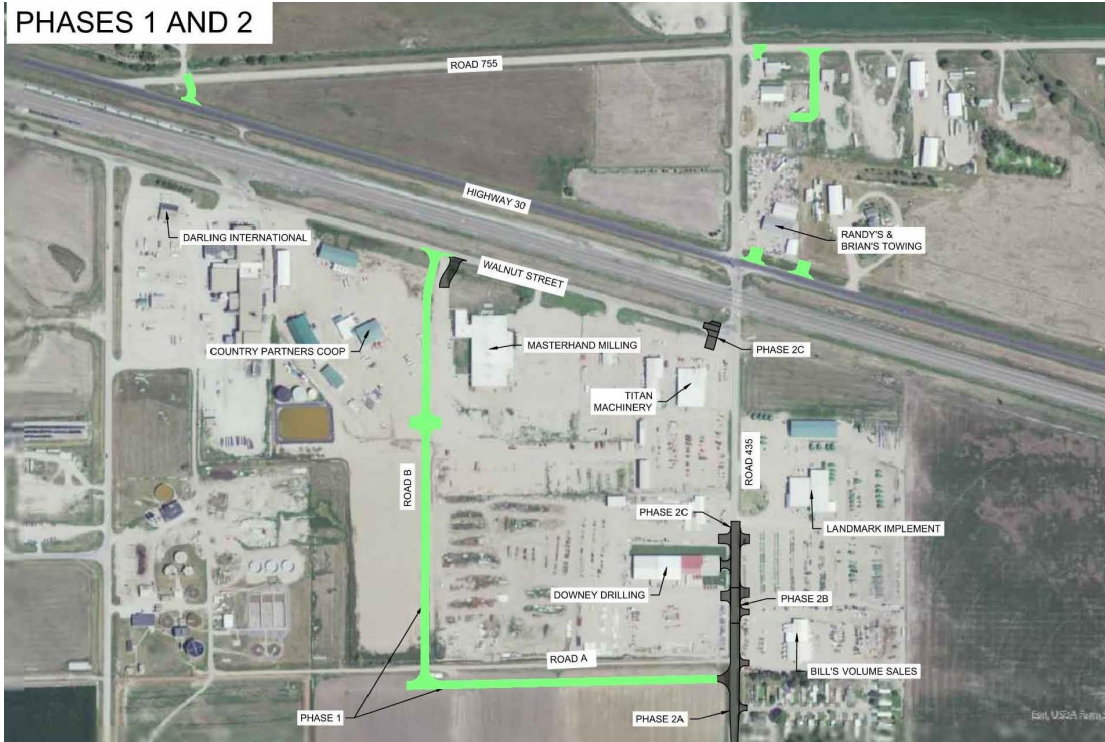
**Phase 4-** Construction of Road 755 is complete and will be open to traffic the first part of October. See completed areas highlighted in green in attached exhibit.

**Phase 5-** Work on Phase 5 is expected to begin early October 2024 and will last until October 2025. The portion of this work which is north of Highway 30 will begin first. Road 435 will be closed between Highway 30 and Road 755. During this time, traffic will use the new Road 755 connection to Highway 30. New accesses to businesses have been constructed. Work includes pavement removal, storm sewer, grading, bridge construction, roadway lighting and paving. Beginning mid November Road 435 will also be closed from Highway 30 south approximately 1,000 feet. During this closure businesses will obtain access from the newly constructed portions of Road 435 or from Walnut Street. Road 435 will be closed and thru traffic will be detoured along Roads 754 and 756 west to Highway 283 and Taft Street. There will also be intermittent interruptions along Highway 30 during this time and traffic will be detoured accordingly.



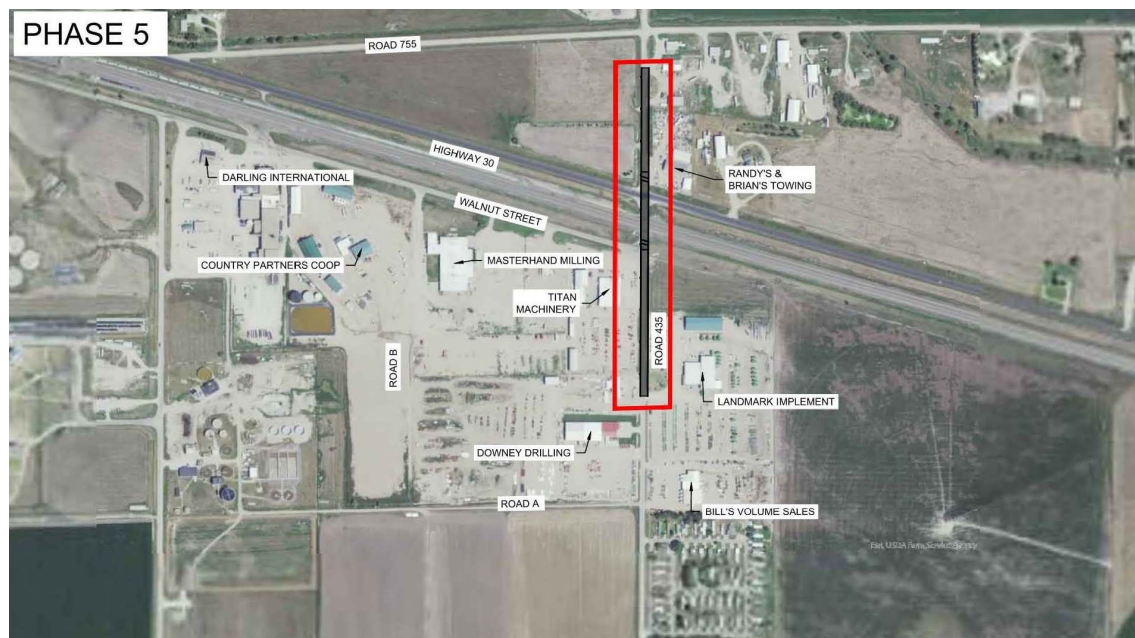
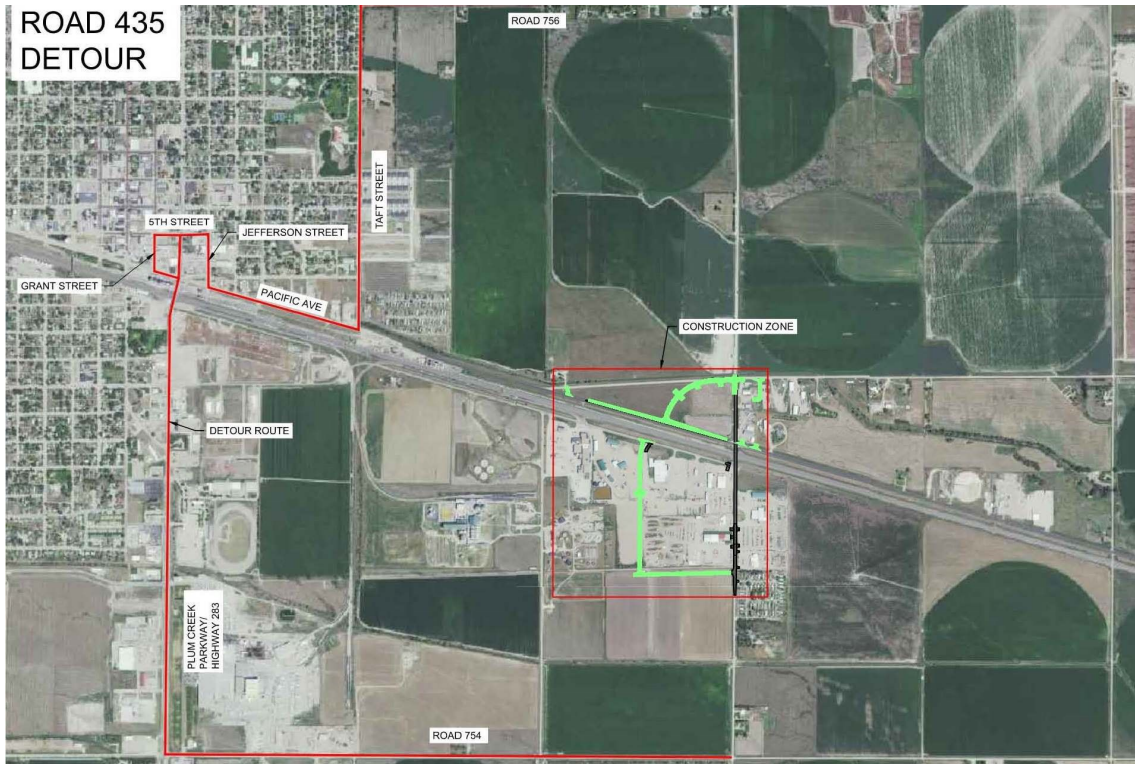
## Lexington East Viaduct Construction Phasing Plan 2024-2025 (Updated October 2024)

Green = completed



## Lexington East Viaduct Construction Phasing Plan 2024-2025 (Updated October 2024)

Green = completed



## Lexington snow and ice removal

**W**inter weather will be here soon And the City would like to remind citizens of the following points related to snow removal. There is also the Emergency Snow Route map on the next page.

Property owners are required to remove snow and ice from sidewalks abutting their property, within 48 hours of the snowfall. Removal of snow and ice from sidewalks not only ensures safe passage for pedestrians (including school children), but also limits liability. Someone who sustains injuries from slipping on ice might claim their injuries resulted from property owner neglect. Please remember that snow and ice removed from your property is not to be placed into the street. Instead move it to non-paved areas.

The City needs the cooperation of all citizens as we work to remove snow and ice from the streets. Citizens are encouraged to listen to local radio stations or read the local newspaper (including online) for

announcements of possible Snow Emergency situations where substantial snowfall is experienced or anticipated.



In times of a declared Snow Emergency, parking along streets in the designated Snow Emergency Route is prohibited. Commercial Areas may also be included (see Snow Route map).

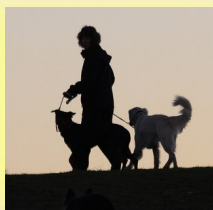
Citizens living along these routes are encouraged to comply with the prohibition and move their vehicles from the street.

In addition, during a Snow Emergency, parking in the Downtown area is prohibited. In non-emergency times, citizens are still encouraged to move their parked vehicles off of the street in a reasonable period of time after snowfall to allow City crews access to remove the snow and ice. Information regarding the removal of snow in your area of the City can be obtained by contacting Tom Nelson at 308-324-5995.

The City of Lexington would like to reiterate that snow and ice removal is important for vehicular traffic as well as Pedestrian traffic.

Please take the time to do your part to keep our streets and sidewalks safe. The City of Lexington thanks everyone for their cooperation and prompt attention to this issue.

### ATTENTION DOG OWNERS



As you and your dog are out walking in your neighborhoods, in the City's parks or on the trails, please remember to clean up after your dog.

A simple plastic bag slipped over your hand like a glove makes an efficient and clean pick-up tool. Picking up is just part of having a dog. It may seem silly at first, but people who see you do it will know any mess left behind is NOT from your dog. Picking up shows pride in your community, in yourself, and in your dog. You'll set a great example for others, and will help create a positive image for dogs and their owners.





KEEP LEXINGTON BEAUTIFUL

# FREE COMMUNITY SHREDDING EVENT!



DONATIONS WILL GO TOWARDS RECYCLING PROJECTS!

**OCTOBER 12 12-2PM**

**H&R BLOCK \* 617 N. Grant St. Lexington**

Shredding available to anyone in the Lexington area, residential and commercial. No cardboard boxes accepted. Document drop off available 1 day in advance.

For more information contact us @ [klbnebraska@gmail.com](mailto:klbnebraska@gmail.com) or 308-325-5701







## City Council Members Sworn In



Left to right: John Salem, Dora Vivas, Mayor John Fagot, Jared Jacob, Jeremy Roberts

Following the general election every two years, the City Council holds an “organizational meeting” on the first Tuesday of December. The newly elected or re-elected council members take the oath of office, and choose one from among the five members to be president (mayor) and one vice president. On December 3, 2024, John Fagot was named President and John Salem Vice-President.

Two Councilmembers, Dora Vivas and Jeremy Roberts, were re-elected and renewed their oath of office, as did Jared Jacob, the newly elected Councilmember. Jacob fills the Council position recently held by Steve Smith, who chose not to run again after eight years of service. Jacob has served on the City’s Planning Commission since 2017.





**Lexington Veterans Pavilion lit up for the holidays to honor our service members. Be sure to drive through and thank a Veteran this holiday season! (near 7th & Taft)**

LEXINGTON  
**LEXUS**  
UTILITIES SYSTEM  
308-324-2343

## Tips to Prevent Frozen Pipes

- Leave cabinet doors open

so house heat can warm the pipes better. ➤
- Leave Water Running - Just a small, slow stream/trickle is usually enough to keep the pipes from freezing.
- Unhook Garden Hoses. You can also install frost-free faucets and insulate outdoor faucets ➤
- Do not set your thermostat lower than 55°F, even if you plan to be away for an extended time.
- Learn where your main water shutoff valve is. If pipes burst, it could prevent a lot of damage. ➤
- Mobile Homes Need Special Pipe Care
- Install Insulated Tape Wrap or even better **Electric Heat Tape** on pipes under the trailer.
- Make sure the trailer is skirted. ➤

## OPEN HIT NIGHT

**TUESDAYS:**  
December 3, 10, 17  
6:30 - 8:30 pm

# BASEBALL GOLF SOFTBALL

The Lexington Optimist Hitting Complex - Open Hit Night - available for all ages for use of the batting cages, pitching machines, and golf range nets. Middle School students and younger need to be accompanied by an adult. High School and Adult participants are welcomed without supervision.



**New Vintage Row Apartments Now Open - Affordable Senior Housing**



Lexington now has 35 new apartment units with the opening of “The Vintage Row” west of Liberty Drive and south of 13th Street. A ribbon-cutting ceremony was held October 10 in front of the complex’s clubhouse. City and State officials joined with representatives from the developer, Hoppe Homes. The project is the

latest payoff from the City of Lexington’s ongoing efforts to increase the number of dwelling units, especially affordable housing. The Nebraska Department of Economic Development provided \$669,000 in National Housing Trust Funds to support the project.





**EnergyWise Tip: Night Lights**



*by NPPD Energy Efficiency Program Manager Cory Fuehrer*

For something as ubiquitous as electric lighting, it may be hard to imagine a time when our homes were without it. However, using electricity for residential illumination only became common in the United States during the 1940s. Since then, we've been extending our days into our nights, often with a flick of a switch.

Consider that almost everyone has a light or a number of lights they rely on to nurse their night owl tendencies. Why wouldn't you want efficiency, quality and the most overall value from those essential fixtures? Here are a few of the most common, including opportunities for their improvement:

**Ceiling fixtures**

Around 2500 BC, the ancient Egyptians began using the first known ceiling lights. Made from clay, these lamps burned animal fat, bees wax or plant-based oils including olive, sesame and grape-seed. Fast-forwarding to the 1950s, almost all residential ceiling lights required incandescent bulbs. While much safer and efficient than producing light from combustion, about 90%

of the electricity they consumed produced heat rather than light. Today, homeowners can select light-emitting diode (LED) replacement bulbs that require six to seven times less electricity to produce the same amount of light while lasting up to 12 times longer. Another option consumers have is to install fully dimmable LED replacement bulbs and the appropriate dimmer switch. By doing so, users can adjust light levels to



their desired effect. For even greater energy efficiency and longevity, consider replacing an old fixture with a solid-state LED fixture. Many are also fully dimmable. Solid-state fixtures have embedded LEDs so bulb replacement is no longer necessary.

**Plug-in lamps**

It is common to leave a wall or table lamp on for someone needing to pass through an area of the home after everyone else has gone to bed. In 1902, bulbs with two carbon filaments were created to allow for adjustable lighting levels. Shortly thereafter, manufacture of lamps with multi-level switches allowed homeowners to select multiple illumination levels. This reduced the amount of electricity used when minimal levels of illumination were appropriate. With a simple twist of the switch, full lighting levels could be restored. As with other socket-type fixtures, improving efficiency is as simple as replacing older incandescent bulbs with three-way LED replacement lamps.

**Outdoor sconces and pathway lights**

Especially as we enter the winter season and our nights become longer, exterior lighting becomes a matter of maintaining safety. Sidewalks can become snow or ice-

*(continues on next page)*



## EnergyWise Tip: Night Lights

*(continued from previous page)*

covered, which creates slipping hazards. While converting these to LED is an easy option to improve efficiency, when was the last time you cleaned these fixtures? Over the past forty years, The Illuminating Engineering Society has commissioned several luminaire dirt depreciation studies to find that outdoor fixtures can lose 11 to 29 percent of their light output due to outdoor environments. A simple way to reestablish their lighting levels is to add "fixture" cleaning to your fall routine. After a season of dusty winds, lawn mowing and plants pollinating, this is the perfect time to restore their functionality.

### Plug-in lights

How easy is it to plug a small night light into an electric socket to provide a little extra illumination where you need it? Though they may only require between 2 and 7 watts of power, many operate continuously and do not switch off during the day. Over the course of a year, they can double the amount of energy needed to provide that small amount of extra safety and security. Instead, install an LED night light with a photosensor switch. Most require one watt or less of power to operate and automatically switch "on" or "off" depending on the amount of light from other sources.

In partnership with Nebraska Public Power District, Lexington Utilities System wants to help you effectively and efficiently light up your night when and where you need it! For additional ways you can save energy every day, contact Lexington Utilities System or visit [www.energywisenebraska.com](http://www.energywisenebraska.com).



**The City's website has tools to help you save energy and money.**



**Interactive Energy Home**



← **Look for this button at**

**[www.cityoflex.com/departments/utilities](http://www.cityoflex.com/departments/utilities)**

LEXINGTON

150  
YEARS

1874 - 2024





Members of the **Lexington Police Department** once again participated in **No Shave November**, donating all proceeds to **Operation Santa Claus** for Christmas gifts to children. Shown left to right: School Resource Officer (SRO) **Joel Kinney**, SRO **Matt Roberts**, **Jason Dillard** (Optimist Club), Sgt. **Edwin Perdomo**, and Officer **Andy Manzo**.



Remember, it ALL drains to our lakes and rivers



**Help keep pollution out of storm drains**

**Only rain in the drain!**

That's because storm drains and roadside ditches lead directly to our lakes and rivers. So, any oil, pet waste, leaves, trash, or dirty water from washing your car that enters a storm drain gets into our lakes and rivers. With thousands of people living in and around Lexington, we all need to be aware of what goes into our storm drains.

**So what can you do? Simple:**

- Sweep fertilizer off of driveways and sidewalks, back onto your lawn.
- Keep leaves, grass clippings, trash, and fertilizers out of storm drains.
- Do not dump motor oil, anti-freeze, chemicals, pet waste, dirty soapy water, or anything else down the storm drains.
- Volunteer to label the storm drains in your neighborhood to inform your neighbors that storm drains flow directly to our lakes and rivers (contact Keep Lexington Beautiful, (308) 324-7986, or [keeplexbeautiful@yahoo.com](mailto:keeplexbeautiful@yahoo.com)).

**KEEP OUR WATER CLEAN!**



Support provided by  
Nebr. Dept. of  
Environment  
& Energy



[www.cityoflex.com](http://www.cityoflex.com)





## Library News



907 N Washington  
(308) 324-2151



### Library Hours

Mon-Thur: 9 am - 8 pm

Fri & Sat: 9 am - 5 pm

Sunday: CLOSED

by Jennifer Norton  
Library Director


*"Ah, how good it is to be among people who are reading."  
— Rainer Maria Rilke, Austrian poet and novelist*



Join us December 19 at 5:30 for December's **Holiday Family Fun Night**. A piano recital by various students, holiday music, karaoke, and other activities are planned. Supper begins promptly at 5:30 with the festivities to follow.



Join a **Library Book Club** for the new year. The Lexington Public Library hosts a number of book discussion groups. The **Young Enough Book Club** meets the 4th Monday of the month at 6 pm, **Literary Guild** meets the 4th Tuesday of the month at 9:30 am, **Monday Afternoon Book Club** meets the 2nd Monday of the month at 3 pm, **Spanish Book Club** meets the 4th Tuesday of the month at 6 pm and **Classics Book Club** meets every other month on the 2nd Thursday of the month in January, March, May, July, September & November. Book clubs are a great way to read and to socialize. Call or stop by the library to learn more. 308-324-2151



The 2025 **One Book, One Lexington** title will be announced in January. Stay tuned and get ready to read and to participate in a year's worth of programs, activities and exhibits!



## HONOR A VETERAN WITH THIS LASTING TRIBUTE

Thanks to the Lexington Veterans Memorial Committee, you now have the opportunity to purchase a commemorative brick which can be inscribed in honor or in memory of a veteran. The bricks will be installed on the Veterans Pavilion Memorial Wall at the south end of Kirkpatrick Memorial Park.



The process is simple: fill out the form at <https://donate.brickmarkers.com/lex>, (or use the QR code above) and remit your payment. All the helpful details are at the website.

Thank you for supporting our local heroes!



**JOHN Q. VETERAN**  
Staff Sergeant  
USMC 11/1942-12/1945

## SUMMER JOBS - Temporary Seasonal Workers, Part-time

**APPLY NOW!**

Positions available include:

- Concession Workers (age 14+)
- Lifeguards (age 15+)
- City Park and Cemetery Maintenance (age 16+)

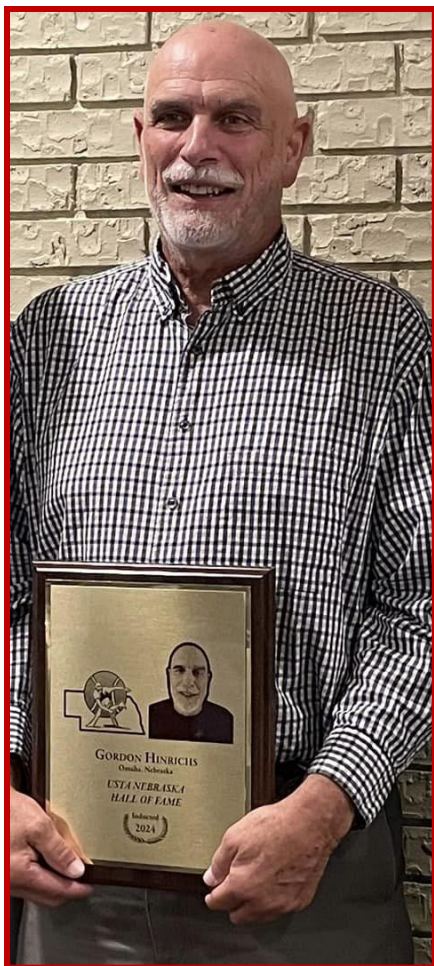


The City of Lexington is an Equal Opportunity Employer. Download an application from the city website, [www.cityoflex.com/human-resources/](http://www.cityoflex.com/human-resources/).





## Tennis Awards for Lexington Athletes



Gordon Hinrichs.



Top: Troy, Asher and Jake Saulsbury. Lexington Parks & Recreation Manager. Bottom: Jake Saulsbury and Ella Young.

Central Nebraska was well represented at the Nebraska Tennis Association Hall of Fame banquet in Kearney October 27. Lexington native **Gordon Hinrichs** was inducted into the USTA Nebraska Hall of Fame, recognized for earning multiple medals, including a gold medal at the national senior games and his long-standing contributions to the sport and growth of tennis.

The **City of Lexington** received the outstanding diversity achievement award. LHS senior **Ella Young** received recognition for her outstanding sportsmanship. **Asher Saulsbury** was named Jr. High performance player of the year. **Troy Saulsbury** received an award for Outstanding Contributor to Youth Tennis Programs.



### Follow us on Facebook!

Get the latest scoops about what's going on in Lexington!  
 Facebook users: be sure to search for "City of Lexington, Nebraska" (not to be confused with the generic page the Facebook folks created).  
 Only our official page gives you the latest news and updates.

<https://www.facebook.com/pages/City-of-Lexington-Nebraska/157277430966096>





## Presents:

Mike Feeken, Strategic Partnerships Advisor



## Hear About:

- How access to quality child care impacts the ability for families, businesses, and communities to thrive and about NEW Child Care Tax Credits that could provide innovative ways to support local early childhood infrastructure. and how to access them.

## Who Should Attend:

- Employers
- Community Organization Representatives
- Early Childhood Professionals
- County/City/Village/ School Elected Officials & Representatives
- Parents
- Anyone interested in access to quality child care

**Location: Central Community College, Rm 204, 1501 Plum Creek Parkway, Lexington**

**Date/Time: December 10 6:30 PM**



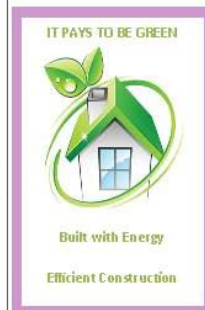
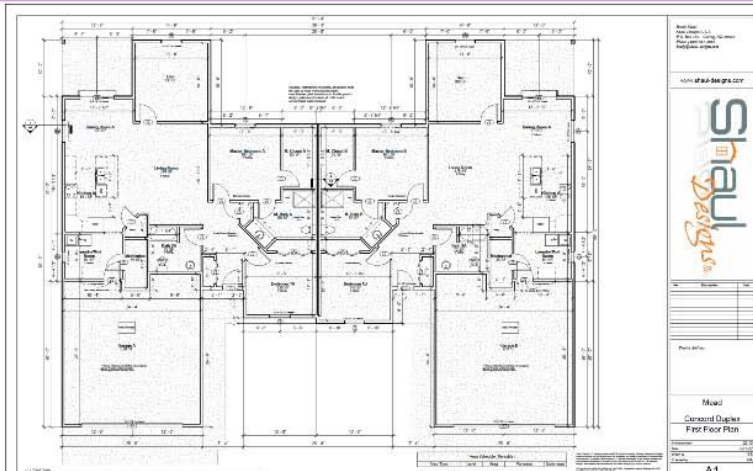
## 2 UNITS FOR SALE

### 1909-1911 Battle Green Court

2 BEDROOM - 2 BATH - LUXURY CONDO



### *The Concord*



Contact: *The Greater Lexington Corporation*  
greaterlexcorp@cityoflex.com

More information on the following page



## The Concord

- \$265,000
- Age restricted community (55+)
- Full service clubhouse
- Cooperative maintenance
  - Lawn care, snow removal, etc.
- Homeowner's Association
- Luxury 2 bedroom + den; 2 bathroom
- 1,650 Square Feet
- Energy efficient construction; all electric unit
- 2-Car oversized garage- 620 sq. ft.
  - Oversized overhead door- 18' X 7'
- Covered patio-120 sq. Ft.
- Water Softener
- Off-street visitor parking
- Area amenities
  - Hospital
  - Parks and Trails
  - Golf Driving Range
  - Recreation Complex
  - Lexington Fieldhouse
  - Lexington Racquet Center/Pickleball Courts



Kitchen



Patio



Oversized Garage

Contact: *Greater Lexington Corporation*

308-324-2341, ext. 1112



## Lexington snow and ice removal

**W**inter weather season is here and the City would like to remind citizens of the following points related to snow removal. There is also the Emergency Snow Route map on the next page.

Property owners are required to remove snow and ice from sidewalks abutting their property, within 48 hours of the snowfall. Removal of snow and ice from sidewalks not only ensures safe passage for pedestrians (including school children), but also limits liability. Someone who sustains injuries from slipping on ice might claim their injuries resulted from property owner neglect. Please remember that snow and ice removed from your property is not to be placed into the street. Instead move it to non-paved areas.

The City needs the cooperation of all citizens as we work to remove snow and ice from the streets. Citizens are encouraged to listen to local radio stations or read the local newspaper (including online) for

announcements of possible Snow Emergency situations where substantial snowfall is experienced or anticipated.



In times of a declared Snow Emergency, parking along streets in the designated Snow Emergency Route is prohibited. Commercial Areas may also be included (see Snow Route map).

Citizens living along these routes are encouraged to comply with the prohibition and move their vehicles from the street.

In addition, during a Snow Emergency, parking in the Downtown area is prohibited. In non-emergency times, citizens are still encouraged to move their parked vehicles off of the street in a reasonable period of time after snowfall to allow City crews access to remove the snow and ice. Information regarding the removal of snow in your area of the City can be obtained by contacting Tom Nelson at 308-324-5995.

The City of Lexington would like to reiterate that snow and ice removal is important for vehicular traffic as well as Pedestrian traffic.

Please take the time to do your part to keep our streets and sidewalks safe. The City of Lexington thanks everyone for their cooperation and prompt attention to this issue.



**801 West Vine St.  
308-324-5995  
Mon. - Fri.  
8 a.m. - 4 p.m.**

- dispose of furniture, appliances, pallets, and other large items (small fee may apply)
- recycle paper, plastic, and cardboard
- pick up free wood chips or compost



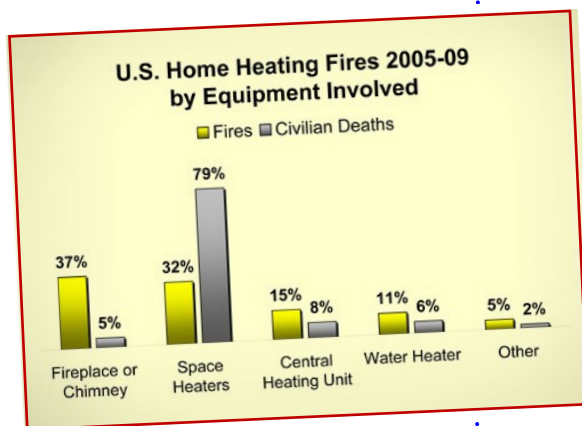


# Space Heater Safety

You might be turning on a space heater to keep warm in this cool weather. However, you might not know that thousands of fires are caused every year by space heaters, especially improperly used ones. The National Fire Protection Association says in 2011, space heaters were involved in about 17,850 home fires.

on the heater and start a fire.

- Do not use extension cords with space heaters unless absolutely necessary. If you have to use an extension cord, make sure it has a power rating as high or higher as that of the heater itself. Keep the cord stretched out and do not allow it to become buried under rugs



or carpeting. Don't place anything on top of the cord. If the cord ever feels even slightly warm, discontinue use.

- Inspect the heater's cord periodically to look for frayed wire or damaged insulation. Do not use a space heater with a damaged cord.
- Check periodically for a secure plug/outlet fit. If the plug becomes very hot, the outlet may need

to be replaced by a qualified technician. This could be the sign of a potential home wiring issue.

Here are some safety tips from Underwriters Laboratories (UL) and other sources:

- Always read and follow the manufacturer's recommendations.
- Every level of your home should have a working smoke detector that is tested on a monthly basis.
- Keep all space heaters three feet away from anything that could catch on fire.
- Make sure the space heater includes a tip-over switch to ensure that it shuts off if it accidentally tips over.
- NEVER leave a space heater unattended.
- NEVER use a space heater in the room where you will be sleeping.
- NEVER place heaters on furniture. They are designed to be placed on the floor.
- Unless the heater is designed for use outdoors or in bathrooms, do not use in damp, wet areas.
- NEVER place heaters where towels or other objects could fall



- Use space heaters only as a supplementary, small-area sources of heat. They are not intended to replace the home's heating system, and turning the central heating system down too low may result in water pipes bursting.
- Don't use a space heater to dry your wet clothes or pull it closer when you are in a bath tub.
- Keep pets and children away from space heaters.

- Space heaters take a lot of electricity. They can overload the home's wiring, especially if other high-wattage appliance are on at the same time. This may cause overheating of circuits, which may lead to fires.
- Make sure the space heater you are buying is certified and labeled as such on the box (such as Underwriters Laboratory).
- If you have a **liquid-fueled** space heater, use only the fuel recommended by the manufacturer. The wrong fuel could burn hotter than the equipment was designed for and cause a serious fire.
- When refueling, turn off the heater and let it cool down completely before adding fuel. Wipe away any spills promptly.
- Before you buy a kerosene heater, check with your local fire department to ensure that it is legal in your area.
- Kerosene heaters have a different type of threat with the potential of carbon monoxide poisoning, so take that into consideration.

