

Parcel Information	
Parcel ID:	240136624
Map Number	676
State Geo Code	3556-00-0-10086-022-0003
Cadastral #	
Images	
Current Owner:	CITY OF LEXINGTON P O BOX 70 LEXINGTON, NE 68850
Situs Address:	504 W 8TH ST
Tax District:	495
School District:	
Account Type:	Exempt
Legal Description:	00000676 LOT 3 & E3FT N97FT LOT 4 BLK 22MAC COLL & LEFLANG'S SECOND ADDITION 504W 8TH ST
Lot Width:	53
Lot Depth:	140
Lot Size:	

Assessed Values				
Year	Total	Land	Outbuilding	Dwelling
2013	\$0	\$0	\$0	\$0

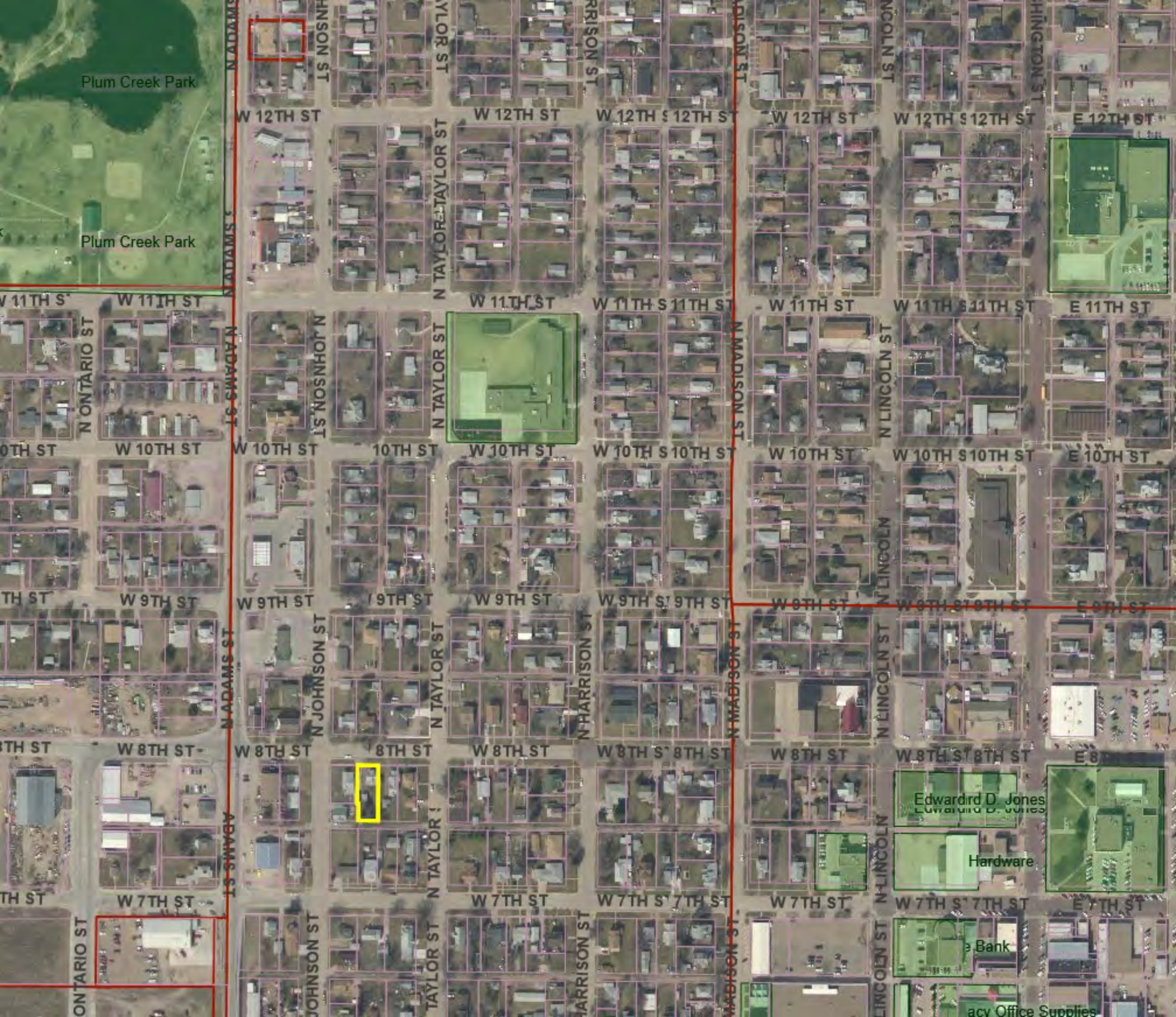
Yearly Tax Information		
Year	Amount	Levy
2013		
2012	\$159.18	2.217015

2013 Tax Levy	
Description	Rate
COUNTY LEVY	0.39307600
SCHOOL LEXINGTON #1	1.04881500
LEX #1 BOND 1&2	0.02759900
LEX #1 BOND 4(9-12)	0.04378600
LEX #1 BOND 3 (K-8)	0.09266100
ESU #10	0.01500000
CENTRAL COMM COLL	0.11261600
NRD CENTRAL PLATTE	0.04215300
RR TRANS SAFETY DIST	0.00750000
CITY LEXINGTON	0.38470900
AGRI. SOCIETY	0.00963900

Sales Information			
Sale Date	Sale Price	Book & Page	Grantor
08/07/2013	\$5,000.00	2013 / 2761	ZANDER, TATE & PRATT LLC
05/10/2013	\$276.00	2013 / 1957	SUN TRUST MORTGAGE INC
03/25/2010	\$47,105.00	2010 / 859	

Property Classification			
Status:	Unimproved	Location:	Urban
Property Class:	Exempt	City Size:	5,001-12,000
Zoning:	Single Family	Lot Size:	<10,000 sq. ft.

Residential Datasheet			
Zoning:	Single Family	Building Size:	0 sq. ft
Year Built:	0	Quality:	
Exterior:		Style:	
Bedrooms:	0	Bathrooms:	0.0
Plumbing Fixtures:	0	Heating/Cooling:	
Basement Size:	0 sq. ft	Min Finish:	0 sq. ft
		Part Finish:	0 sq. ft



Plum Creek Park

Plum Creek Park

W 12TH ST

W 12TH ST

W 12TH S 12TH ST

W 12TH ST

W 12TH S 12TH ST

E 12TH ST

W 11TH ST

W 11TH ST

W 11TH ST

W 11TH S 11TH ST

W 11TH ST

W 11TH S 11TH ST

E 11TH ST

W 10TH ST

W 10TH ST

W 10TH ST

10TH ST

W 10TH ST

W 10TH S 10TH ST

W 10TH ST

W 10TH S 10TH ST

E 10TH ST

W 9TH ST

W 9TH ST

W 9TH ST

9TH ST

W 9TH ST

W 9TH S 9TH ST

W 9TH ST

W 9TH S 9TH ST

E 9TH ST

W 8TH ST

W 8TH ST

W 8TH ST

8TH ST

W 8TH ST

W 8TH S 8TH ST

W 8TH ST

W 8TH S 8TH ST

E 8TH ST

W 7TH ST

W 7TH ST

W 7TH ST

W 7TH ST

W 7TH ST

W 7TH S 7TH ST

W 7TH ST

W 7TH S 7TH ST

E 7TH ST

Edward D. Jones

Hardware

Bank

Office Supplies

