

Land Use Type	Land Use Count	Acres Of Extraterritorial Jurisdiction
Agricultural/Industrial	5	344.55
Commercial	11	78.11
Developing Residential	5	91.24
Industrial	16	838.31
Parks and Recreation	5	100.04
Public/Quasi Public	9	147.7
Residential	127	500.26
<i>Single Family</i>	<i>112</i>	<i>438.04</i>
<i>Multifamily</i>	<i>1</i>	<i>3.25</i>
<i>Mobile Home</i>	<i>14</i>	<i>58.97</i>
Agriculture/Open Space		24,180.72
Source: 2013 Comprehensive Development Plan, JEO Consulting Group, Inc.		

Table 36: Extraterritorial Jurisdiction Land Use, Lexington, 2013

Lexington currently exercises its statutory authority to enforce planning jurisdiction within two miles of the corporate boundary. An evaluation of land uses within this extraterritorial jurisdiction (ETJ) is important for future development and planning activities. The land uses found outside of the corporate limits are mostly agriculture, agricultural residential, and single-family residential, especially to the east of the community. Due to external and internal development pressures, as well as the proximity of major transportation routes, the percentage of residential uses found within the Lexington ETJ is higher than would be typical for a Midwestern community of this size.

In addition, all land uses that are found within Lexington are also found within the ETJ. This pattern is also influenced by the urban nature of the area, as well as the land use policies Lexington has held over time. The presence of all the same land use types in the ETJ will encourage greater development activity, which in turn can influence Lexington's ability to annex and grow at an increased rate over communities located in more rural settings.

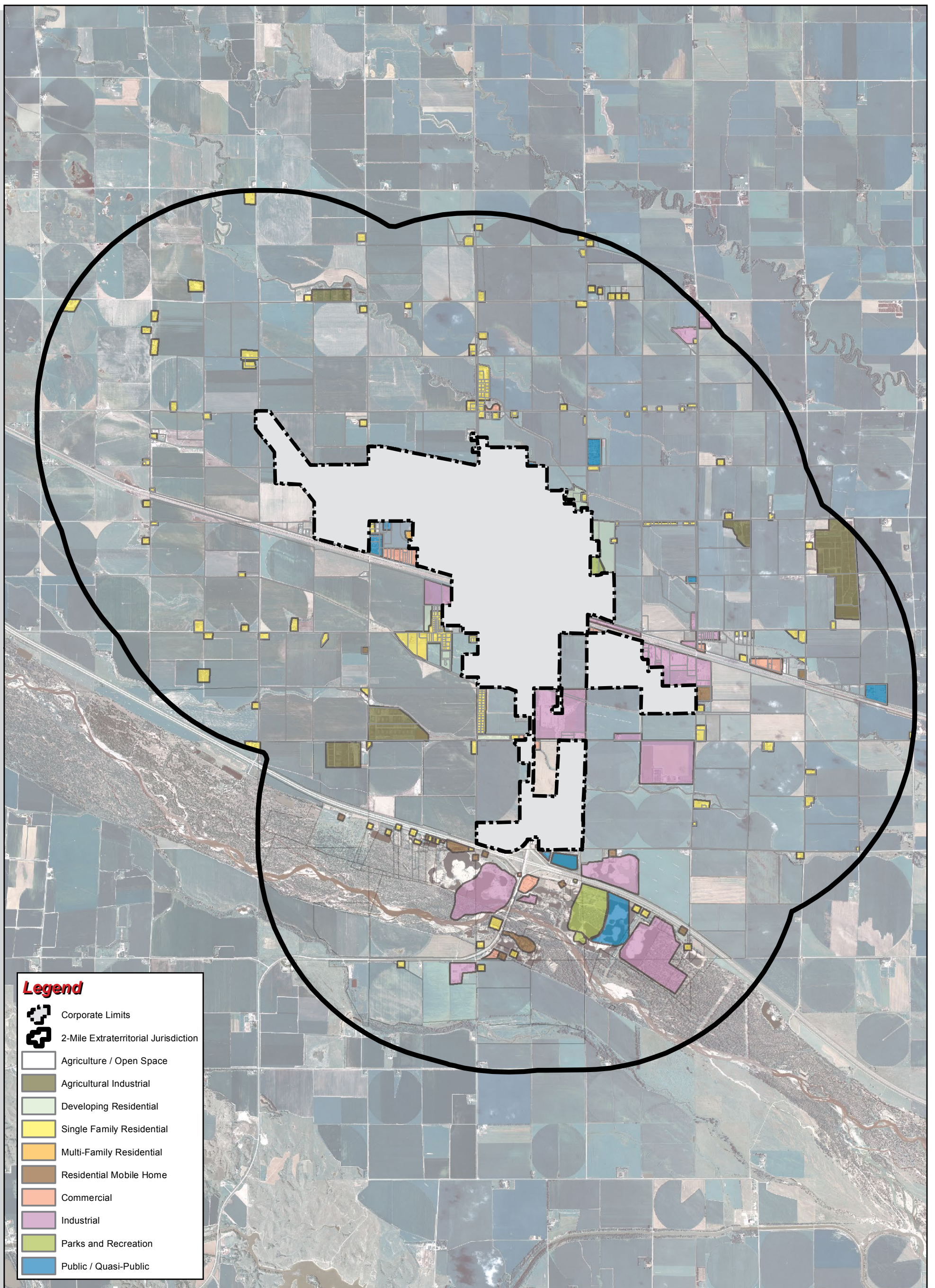
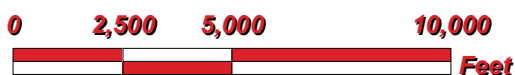


Figure 25b: Existing Land Use, Extraterritorial Jurisdiction

City of Lexington
Dawson County, Nebraska

Existing Land Use Map
Extraterritorial Jurisdiction



Created By: SMS
 Date: April 2013
 Software: ArcGIS 10
 File: 100999



This map was prepared using information from record drawings supplied by JEO and/or other applicable city, county, federal, or public or private entities. JEO does not guarantee the accuracy of this map or the information used to prepare this map. This is not a scaled plat.