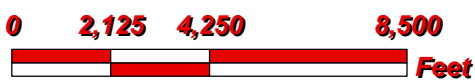


Figure 21: Generalized Soils Association, Lexington

**City of Lexington**  
**Dawson County, Nebraska**  
**Generalized Soils Association**



Created By: SMS  
 Date: April 2013  
 Software: ArcGIS 10  
 File: 100999



This map was prepared using information from record drawings supplied by JEO and/or other applicable city, county, federal, or public or private entities. JEO does not guarantee the accuracy of this map or the information used to prepare this map. This is not a scaled plat.



For more detailed information can be found on individual parcels of land. The previous map, Figure 21, is meant to give a broad understanding of the general soil capabilities. Contacting an expert to test the soil is highly recommended. As shown in Figure 23, it displays that the extraterritorial jurisdiction may have very different soil types near one another. Again, it is recommended to contact United States Department of Agriculture's (USDA's) National Resources Conservation Service (NRCS) for more details and limitations on acquiring land and land uses for. The decisions made on behalf of Lexington should be made with the most current and accurate information available. Figure 22 details the large legend of Lexington soils.



Figure 22: Detailed Legend for Individual Soil Unit Map

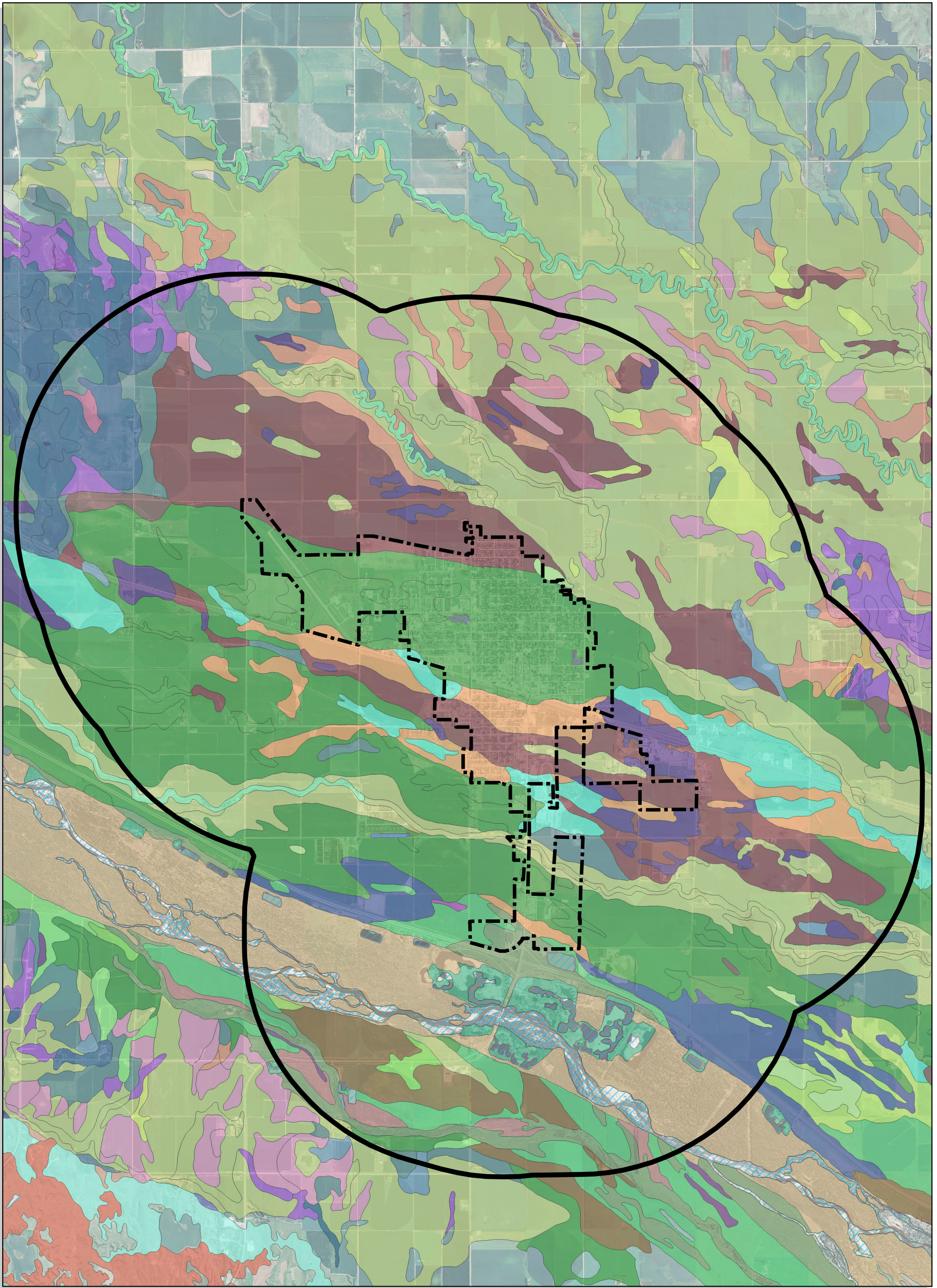
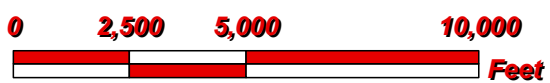


Figure 23: Individual Soil Unit, Lexington

**City of Lexington**  
**Dawson County, Nebraska**  
**Soils Unit Map Name**



Created By: SMS  
 Date: April 2013  
 Software: ArcGIS 10  
 File: 100999



This map was prepared using information from record drawings supplied by JEO and/or other applicable city, county, federal, or public or private entities. JEO does not guarantee the accuracy of this map or the information used to prepare this map. This is not a scaled plat.