

“The Lex-Plan 2013”

*EXISTING
PARKS AND
RECREATION*



Existing Park and Facility Conditions

The City of Lexington manages eight park facilities, including the skate park and family aquatic center, which are located within two of the City parks. This section has a listing of the condition and capacity of all these facilities along with photos of the facilities. Table 38 lists the nationally accepted standard criteria for how the various types of parks and recreation facilities in Lexington were classified. In addition to the park facilities, the City maintains a trail system, currently in a relatively early stage of development.



Classification	General Description	Location Criteria/ Service Area	Size Criteria
Mini-Park	Used to address limited, isolated or unique recreational needs.	Less than a ¼ mile distance in residential setting.	Between 2500 sq. ft. and one acre in size.
Neighborhood Park	Basic unit of the park system and serves as the recreational and social focus of the neighborhood. Focus is on informal active and passive recreation.	¼ to ½ mile distance and uninterrupted by non-residential roads and other physical barriers.	5 acres is considered minimum size. 5 to 10 acres is optimal.
School Park	Depending on circumstances, combining parks with school sites can fulfill the space requirements for other classes of parks, such as neighborhood, community, sports complex, and special use.	Determined by location of school district property.	Variable – depends on function.
Community Park	Serves broader purpose than neighborhood park. Focus is on meeting community-based recreation needs, as well as preserving unique landscapes and open spaces.	Determined by the quality and suitability of the site. Usually serves two or more neighborhood and ½ to 3 mile distance.	As needed to accommodate desired uses. Usually between 30 and 50 acres.
Large Urban Park	Serve a broader purpose than community parks and are used when community and neighborhood parks are not adequate to serve the needs of the community. Focus is on meeting community-based recreational needs, as well as preserving unique landscapes and open spaces.	Determined by the quality and suitability of the site. Usually serves the entire community.	As needed to accommodate desired uses. Usually a minimum of 50 acres, with 75 or more acres being optimal.
Natural Resource Areas	Lands set aside for preservation of significant natural resources, remnant landscapes, open space, and visual aesthetics/buffering.	Resource availability and opportunity.	Variable.
Greenways	Effectively tie park system components together to form a continuous park environment.	Resource availability and opportunity.	Variable.
Sports Complex	Consolidates heavily programmed athletic fields and associated facilities to larger and fewer sites strategically located throughout the community.	Strategically located community-wide facilities.	Determined by projected demand. Usually a minimum of 25 acres, with 40 to 80 acres being optimal.
Special Use	Covers a broad range of parks and recreation facilities oriented toward single-purpose use.	Variable – dependent on specific use.	Variable.
Private Park/ Recreation Facility	Parks and recreation facilities that are privately owned yet contribute to the public park and recreation system.	Variable – dependent on specific use.	Variable.

Source: *Parks, Recreation, Open Space and Greenway Guidelines*. A Project of the National Recreation and Park Association and the American Academy for Park and Recreation Administration. A Publication of the National Recreation and Park Association. James D. Mertes, Ph.D., CLP and James R. Hall, CLP

Table: 38: Parks and Recreation Facility Classifications

Park System Analysis and Service Area

CENTENNIAL PARK

Washington Street and Hwy. 30

1.5 acres



Park Component	Condition			Capacity			Notes
	Poor	Fair	Good	Under	At	Over	
Vegetation (Trees, shrubs, turf)			X		X		Turf dry, trees planted throughout park
Play Areas			X		X		Large open green space
Sports Fields							None at this location
Sports Courts							None at this location
Walks/Trails			X		X		Path through park
Play Equipment							None at this location
Structures							None at this location
Picnic Facilities							No picnic table at this location
Drinking Water							None at this location
Restrooms							None at this location
Parking							On street parking only
Lighting			X		X		Lights along walkway
Benches			X		X		Benches along trail
Signage			X		X		Has a sign located toward east end.
Miscellaneous			X		X		Memorial

Source: JEO Consulting Group, Inc., 2013

Table: 39: Centennial Park, Lexington

Centennial Park



Google earth



LEGEND

- ① Memorial
- ② Trail w/Benches

Figure 36: Centennial Park, Lexington

Park System Analysis and Service Area

WATER TOWER PARK

Madison Street and Hwy. 30
0.25 acre



Park Component	Condition			Capacity			Notes
	Poor	Fair	Good	Under	At	Over	
Vegetation (Trees, shrubs, turf)			X		X		Turf dry (non-irrigated); Medium trees; well maintained; trees identified
Play Areas		X				X	Small green space for simple games
Sports Fields							None at location
Sports Courts							None at location
Walks/Trails							None at location
Play Equipment							None at location
Structures			X		X		Picnic shelter
Picnic Facilities		X			X		Picnic tables at park, does have trash cans
Drinking Water							None at location
Restrooms							None at location
Parking							On Street parking in commercial district, specific facilities are not needed
Lighting							No lights other than street lights
Benches			X		X		Bench in the park
Signage							No park sign but does have City welcome sign

Source: JEO Consulting Group, Inc., 2013

Table: 40: Water Tower Park, Lexington

Water Tower Park



Google earth



LEGEND

- ① Picnic Shelter

Figure 37: Water Tower Park, Lexington

“The Lex-Plan 2013” NEIGHBORHOOD PARKS

Park System Analysis and Service Area

ARBOR PARK
Maple Street and Washington Street
4.0 acres

Park Component	Condition			Capacity			Notes
	Poor	Fair	Good	Under	At	Over	
Vegetation (Trees, shrubs, turf)		X			X		Turf dry, lots of large old growth trees
Play Areas			X		X		Open green space
Sports Fields							None at this location
Sports Courts			X		X		Basketball Court and skate park
Walks/Trails		X		X			Sidewalk runs the perimeter
Play Equipment		X			X		1 Play structure, 2 swing sets, 2 climbing structures
Structures		X			X		1 Picnic shelter
Picnic Facilities		X			X		Numerous Picnic tables, grills and trash cans
Drinking Water	X					X	Hydrant only
Restrooms		X				X	One portable toilet
Parking		X				X	Small off street parking in southeast corner of park
Lighting		X		X			Pole lights at skate park
Benches			X		X		At various locations around the park
Signage		X			X		Sign located in park

Source: JEO Consulting Group, Inc., 2013

Table: 41: Arbor Park, Lexington

| **ACHIEVE** |

Arbor Park



Google earth

feet 300
meters 100



LEGEND

- ① Skate Park
- ② Basketball Court
- ③ Parking
- ④ Swing Set
- ⑤ Play Structures
- ⑥ Picnic Shelter

ACHIEVE

Figure 38: Arbor Park, Lexington

“The Lex-Plan 2013”

Park System Analysis and Service Area

OAK PARK

Oak Street and Madison Street
3.2 acres



Park Component	Condition			Capacity			Notes
	Poor	Fair	Good	Under	At	Over	
Vegetation (Trees, shrubs, turf)			X		X		Turf dry, mature trees planted near play structure and picnic areas
Play Areas			X		X		Large open greenspace
Sports Fields		X			X		1 softball/baseball field (unlighted and no dugouts), 2 portable soccer goals
Sports Courts		X			X		2 basketball courts
Walks/Trails		X			X		Sidewalk around park
Play Equipment			X		X		Large play structure, 2 swing sets, merry-go-around and jungle gym
Structures		X			X		1 picnic shelter
Picnic Facilities		X			X		picnic tables, 1 grill and trash cans
Drinking Water	X					X	Hydrant only
Restrooms	X				X		1 permanent restroom and 1 portable toilet
Parking		X			X		On-street parking only, does have bike rack
Lighting							None at location
Benches		X			X		Benches near play structure
Signage			X		X		Park sign on north side

Source: JEO Consulting Group, Inc., 2013

Table: 42: Oak Park, Lexington

Oak Park



Google earth

feet 300
meters 90



LEGEND

- ① Restrooms
- ② Basketball Courts
- ③ Play Structure
- ④ Ballfield
- ⑤ Picnic Shelter

Figure 39: Oak Park, Lexington

lexington

NEIGHBORHOOD PARK

Park System Analysis and Service Area

PIONEER PARK
15th Street and Lincoln Street
2.1 acres

Park Component	Condition			Capacity			Notes
	Poor	Fair	Good	Under	At	Over	
Vegetation (Trees, shrubs, turf)			X		X		Turf dry, mature trees throughout park
Play Areas			X		X		Large open green space
Sports Fields							None at location
Sports Courts		X			X		1 basketball court
Walks/Trails							Perimeter sidewalk
Play Equipment		X			X		Large play structure, 2 swing sets
Structures		X			X		1 picnic shelter
Picnic Facilities		X			X		Picnic tables, 2 grills, trash cans
Drinking Water	X					X	Hydrant only
Restrooms	X				X		1 permanent restroom and 1 portable toilet
Parking							On-street parking
Lighting							None at location
Benches			X		X		Benches at edge of the play structure
Signage			X		X		Located in southeast corner
Miscellaneous			X		X		Memorial

Source: JEO Consulting Group, Inc., 2013

Table: 43: Pioneer Park

Pioneer Park



Google earth

feet 300
meters 90



LEGEND

- ① Restrooms
- ② Play Structure
- ③ Swing Set
- ④ Basketball Court
- ⑤ Picnic Shelter

Figure 40: Pioneer Park, Lexington

Park System Analysis and Service Area

Kirkpatrick Memorial Park



LEGEND

- ① Lexington Aquatic Complex
- ② Sand Volleyball
- ③ Play Equipment
- ④ Picnic Shelter w/Restrooms
- ⑤ Gazebo
- ⑥ Small Picnic Shelter
- ⑦ Maintenance
- ⑧ Tennis Courts
- ⑨ Picnic Shelter
- ⑩ Concessions
- ⑪ Bath house
- ⑫ Ball field

Figure 41: Kirkpatrick Memorial Park



Park Component	Condition		Capacity		Notes
	Poor	Fair/Good	Under	At/Over	
Vegetation (Trees, shrubs, turf)		X		X	Turf dry, lots of large old trees, some new trees
Play Areas		X		X	Several areas of open green space
Sports Fields	X			X	1 lighted softball/baseball field without dugouts
Sports Courts		X		X	6 lighted tennis courts (3 lighted), 1 sand volleyball in Aquatic Center compound
Walks/Trails	X		X		Gravel roadway, concrete walkways, perimeter sidewalks
Play Equipment		X		X	1 play structure, 1 swing set
Structures			X	X	Maintenance building, picnic shelter with restrooms, concession stand with restrooms (Tennis Assoc. building), 1 smaller picnic shelter, 1 gazebo
Picnic Facilities			X	X	Picnic tables, trash cans, and 1 barbeque grill
Drinking Water	X			X	Hydrants only
Restrooms		X		X	2 permanent restrooms, 3 portable toilets
Parking			X	X	1 large off-street parking lot
Lighting		X		X	Lighted parking lot, the courts and the field
Benches			X	X	Throughout park
Signage		X		X	Sign in park on east side by driveway
Miscellaneous			X	X	Family Aquatic Center is located in the park, County museum and lake are adjacent to park

Source: JEO Consulting Group, Inc., 2013

Table: 44: Kirkpatrick Memorial Park, Lexington

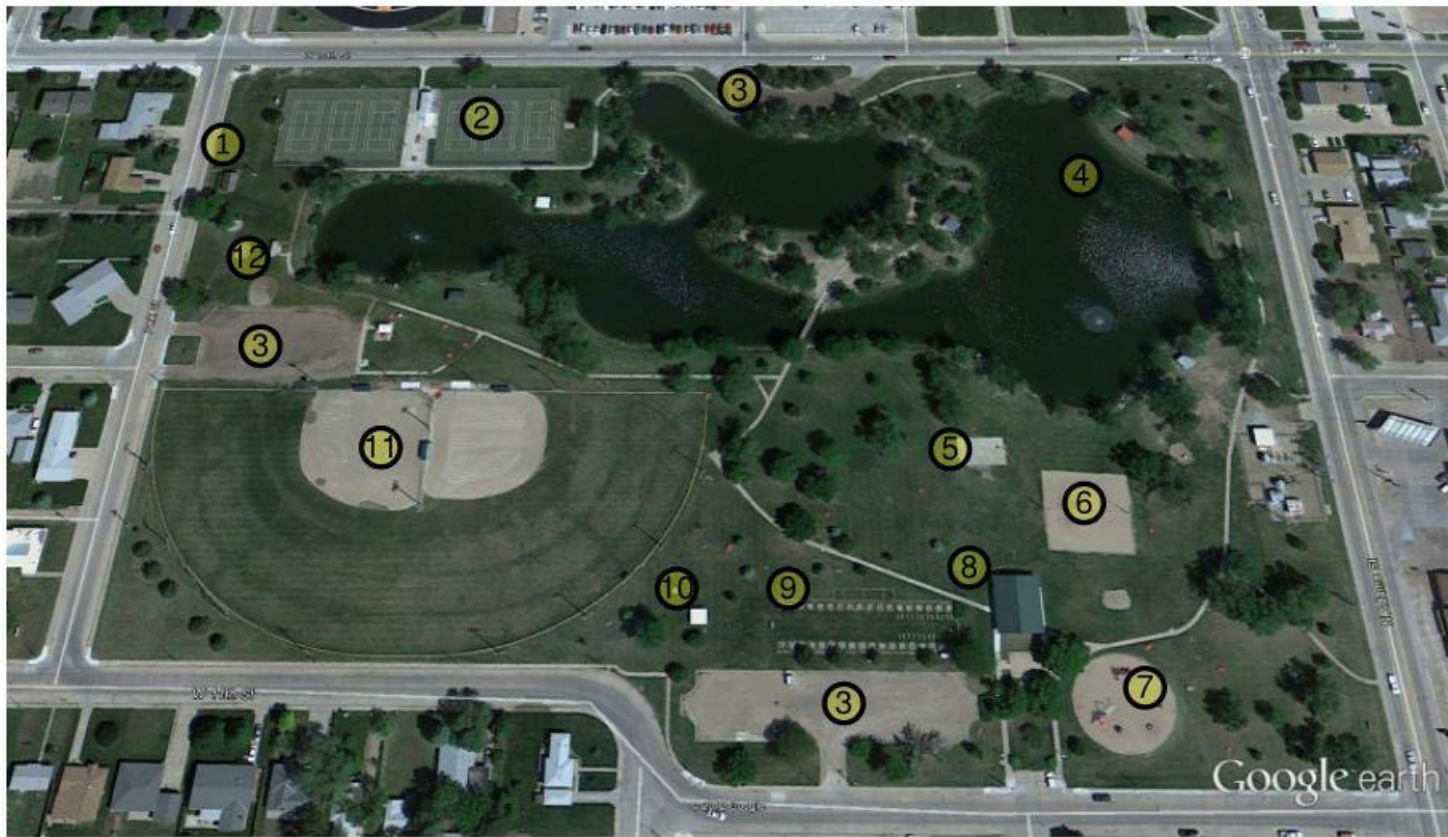
KIRKPATRICK MEMORIAL PARK
11th Street and Taft Street
29.1 acres

lexington

COMMUNITY PARK

Park System Analysis and Service Area

Plum Creek Park



LEGEND

- ① Well House
- ② Tennis Courts
- ③ Parking
- ④ Lake
- ⑤ Basketball
- ⑥ Sand Volleyball
- ⑦ Play Structure
- ⑧ Picnic Shelter w/Restrooms
- ⑨ Horseshoe Pits
- ⑩ Small Picnic Shelter
- ⑪ Ballfields
- ⑫ Restrooms

Figure 42: Plum Creek Park, Lexington



Park Component	Condition		Capacity		Notes
	Poor	Fair/Good	Under	At/Over	
Vegetation (Trees, shrubs, turf)		X		X	Turf dry, lots of large old trees, some new trees
Play Areas		X		X	Several areas of open green space
Sports Fields	X			X	1 lighted softball/baseball field without dugouts
Sports Courts		X		X	6 lighted tennis courts (3 lighted), 1 sand volleyball in Aquatic Center compound
Walks/Trails	X		X		Gravel roadway, concrete walkways, perimeter sidewalks
Play Equipment		X		X	1 play structure, 1 swing set
Structures			X	X	Maintenance building, picnic shelter with restrooms, concession stand with restrooms (Tennis Assoc. building), 1 smaller picnic shelter, 1 gazebo
Picnic Facilities			X	X	Picnic tables, trash cans, and 1 barbeque grill
Drinking Water	X			X	Hydrants only
Restrooms		X		X	2 permanent restrooms, 3 portable toilets
Parking			X	X	1 large off-street parking lot
Lighting		X		X	Lighted parking lot, the courts and the field
Benches			X	X	Throughout park
Signage		X		X	Sign in park on east side by driveway
Miscellaneous			X	X	Family Aquatic Center is located in the park, County museum and lake are adjacent to park



Source: JEO Consulting Group, Inc., 2013

Table: 45: Plum Creek Park, Lexington

PLUM CREEK PARK
13th Street and Adams Street
23 acres

“The Lex-Plan 2013”

*SCHOOL FACILITIES
PARKS AND
RECREATION*

Park System Analysis and Service Area

Elementary schools are considered neighborhood parks. The middle school and high school do not have playground equipment like the elementary schools but could be considered mini parks or sports complexes. For purposes of this plan the middle and high school will be given a condition and capacity report, however only the middle school park will be considered an existing mini-park.



Bryan Elementary
11th Street and Harrison Street

Park Component	Condition			Capacity			Notes
	Poor	Fair	Good	Under	At/Over		
Vegetation (Trees, shrubs, turf)		X			X		Turf dry
Play Areas	X				X		Going through remodel
Sports Fields							None at this location
Sports Courts							No outdoor court
Walks/Trails							None at this location
Play Equipment			X		X		1 large play structure
Structures							None at this location
Picnic Facilities							None at this location
Drinking Water							None at this location
Restrooms							None at this location
Parking			X		X		Paved parking lot
Lighting							None at this location
Benches							None at this location
Signage		X			X		School sign

Source: JEO Consulting Group, Inc., 2013

Table: 46: Bryan Elementary School Park, Lexington

Park Component	Condition			Capacity			Notes
	Poor	Fair	Good	Under	At	Over	
Vegetation (Trees, shrubs, turf)		X			X		Turf dry
Play Areas		X			X		Large open green space
Sports Fields		X			X		1 goal post, 1 backstop, shot put & discus pads
Sports Courts		X		X			Hard surface play court
Walks/Trails							None at this location
Play Equipment			X		X		2 play structures
Structures							None at this location
Picnic Facilities							None at this location
Drinking Water							None at this location
Restrooms							None at this location
Parking			X		X		Paved parking lot
Lighting							None at this location
Benches			X		X		Located near play structures
Signage		X			X		School sign

Source: JEO Consulting Group, Inc., 2013

Table: 47: Pershing Elementary Park, Lexington

Park System Analysis and Service Area

Morton Elementary
506 Morton Street

Park Component	Condition			Capacity			Notes
	Poor	Fair	Good	Under	At	Over	
Vegetation (Trees, shrubs, turf)		X			X		Turf dry
Play Areas	X				X		Going through remodel
Sports Fields							None at this location
Sports Courts							No outdoor court
Walks/Trails							None at this location
Play Equipment			X		X		1 large play structure
Structures							None at this location
Picnic Facilities							None at this location
Drinking Water							None at this location
Restrooms							None at this location
Parking			X		X		Paved parking lot
Lighting							None at this location
Benches							None at this location
Signage		X			X		School sign

Source: JEO Consulting Group, Inc., 2013

Table 48: Morton Elementary Park, Lexington

Park Component	Condition			Capacity			Notes
	Poor	Fair	Good	Under	At/Over		
Vegetation (Trees, shrubs, turf)		X			X		Turf dry
Play Areas		X			X		Large open green space
Sports Fields	X				X		1 soccer field, 1 backstop in poor condition
Sports Courts		X			X		2 basketball courts
Walks/Trails	X				X		Dirt track
Play Equipment			X		X		2 play structures, tires and other playground equipment
Structures							None at this location
Picnic Facilities							None at this location
Drinking Water							None at this location
Restrooms							None at this location
Parking		X			X		Paved parking lot out front
Lighting							None at this location
Benches							None at this location
Signage		X			X		School sign

Source: JEO Consulting Group, Inc., 2013

Table: 49: Sandoz Elementary Park, Lexington

“The Lex-Plan 2013”

LEXINGTON MIDDLE SCHOOL
1100 North Washington Street

Park Component	Condition			Capacity			Notes
	Poor	Fair	Good	Under	At	Over	
Vegetation (Trees, shrubs, turf)		X			X		Turf dry, irrigated sports fields
Play Areas		X				X	None other than sports fields
Sports Fields			X		X		Track, 1 football field (lighted)
Sports Courts			X		X		4 outside basketball courts
Walks/Trails							None at this location
Play Equipment							None at this location
Structures							None at this location
Picnic Facilities							None at this location
Drinking Water							None at this location
Restrooms							None at this location
Parking			X		X		Paved parking lot
Lighting			X		X		Field lighting and street lighting
Benches							None at this location
Signage			X		X		School sign

Source: JEO Consulting Group, Inc., 2013

Table: 50: Lexington Middle School Facilities

Park Component	Condition			Capacity			Notes
	Poor	Fair	Good	Under	At	Over	
Vegetation (Trees, shrubs, turf)			X		X		Turf dry, irrigated sports fields
Play Areas			X		X		Green space/Practice fields
Sports Fields			X		X		Track/football stadium, track, practice fields
Sports Courts							None at this location
Walks/Trails							None at this location
Play Equipment							None at this location
Structures							None at this location
Picnic Facilities							None at this location
Drinking Water							None at this location
Restrooms							In stadium
Parking			X		X		Paved parking lot
Lighting			X		X		Stadium lighting and street lighting
Benches							None at this location
Signage			X		X		School Sign

Source: JEO Consulting Group, Inc., 2013

Table: 51: Lexington Senior High School Facilities

Park System Analysis and Service Area

Park Component	Condition			Capacity			Notes
	Poor	Fair	Good	Under	At	Over	
Vegetation (Trees, shrubs, turf)		X			X		Turf dry
Play Areas			X		X		Open green space located in Kirkpatrick Memorial Park
Sports Fields							None at this location
Sports Courts			X		X		Sand volleyball court
Walks/Trails							None at this location
Play Equipment			X		X		Large sand box within fence
Structures			X		X		Bath house, Concession stand
Picnic Facilities			X		X		3 shelters with picnic tables
Drinking Water			X		X		Drinking fountain
Restrooms			X		X		Permanent restrooms
Parking			X		X		Paved parking lot
Lighting			X		X		Pool area is lit
Benches			X		X		Lounge chairs surrounding the pool
Signage		X			X		Sign located in northwest corner

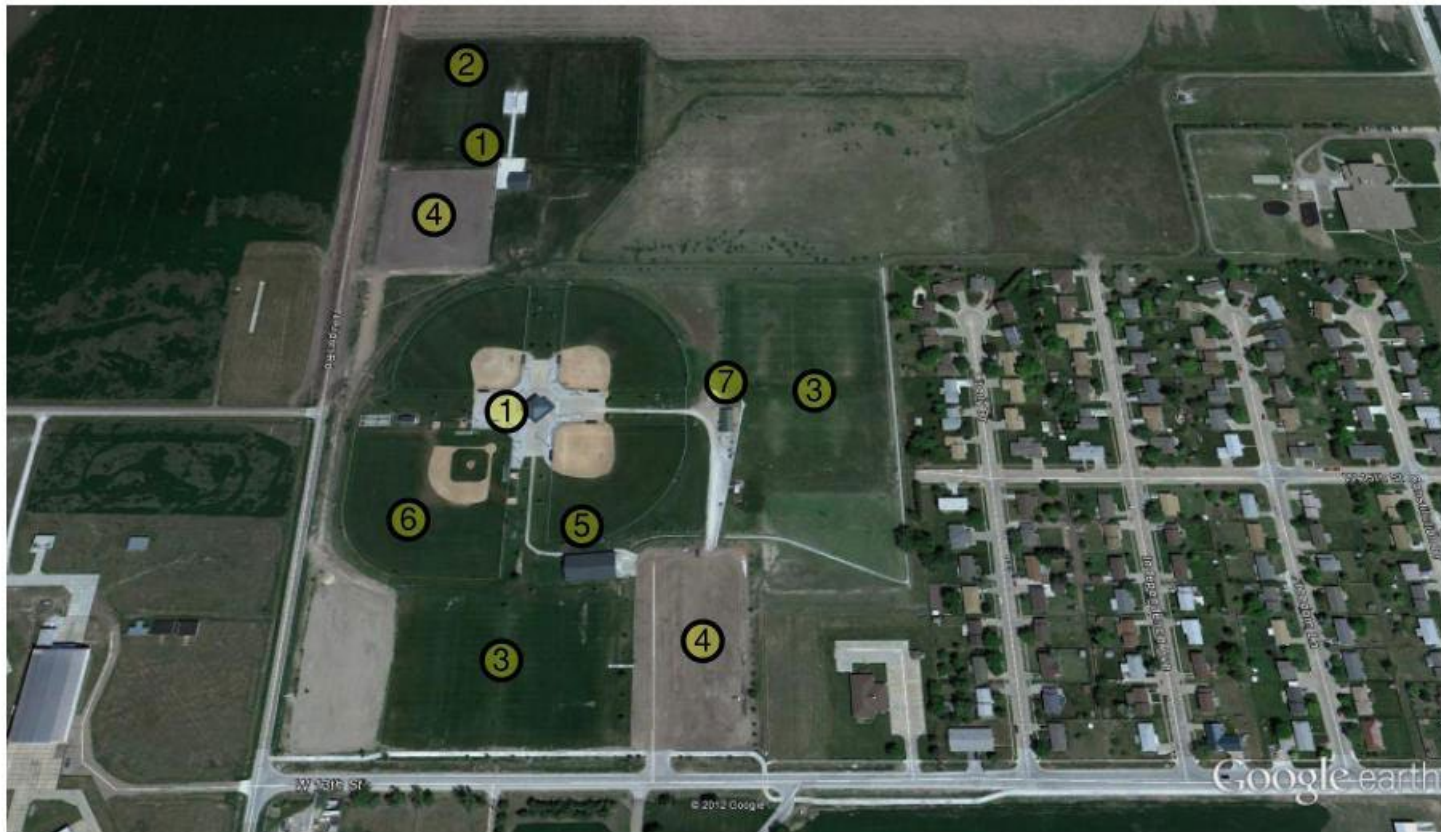
Source: JEO Consulting Group, Inc., 2013

Table: 52: Aquatic Center, Lexington

Aquatic Center
10th Street and Monroe Street

Park System Analysis and Service Area

Optimist Rec Complex



Google earth

feet 1000
meters 400



LEGEND

- ① Concessions and Restrooms
- ② Competition Soccer
- ③ Soccer/Football Fields
- ④ Parking
- ⑤ Indoor Hitting Facility
- ⑥ Ballfields
- ⑦ Maintenance Building

Figure 43: Optimist Recreational Complex, Lexington



Park Component	Condition		Capacity		Notes
	Poor	Fair/Good	Under	At/Over	
Vegetation (Trees, shrubs, turf)		X		X	Irrigated fields
Play Areas		X	X		Open green space
Sports Fields		X	X		2 regulation soccer fields, 5 soccer fields of various sizes, 1 lighted baseball field, 3 lighted softball fields
Sports Courts		X		X	Indoor hitting facility
Walks/Trails		X	X		Running through the complex
Play Equipment	X			X	1 structure inside ball field complex
Structures		X		X	Concession stands, outside batting cages, maintenance building
Picnic Facilities					None at this location
Drinking Water		X		X	Drinking fountains near restrooms
Restrooms		X		X	3 Permanent restrooms, including one in hitting facility. Portable toilets available during play season.
Parking	X			X	2 gravel parking lots
Benches		X		X	Bleachers along fields
Signage		X		X	Monument sign

Source: JEO Consulting Group, Inc., 2013

Table 53: Optimist Recreation Complex, Lexington

Optimist Recreation Complex
13th Street and Airport Road
35.9 acres

Existing Trails

There are a number of bicycle and pedestrian trails in and around the City of Lexington including sidewalks, on-road bicycle facilities and off-road paths. Existing on-street bicycle lanes connect to the north-south, off-road bicycle and pedestrian path just south of U.S. 30 and continue over the highway by means of a grade-separated pedestrian and bicycle path. Figure 44 shows existing on-road and off-road bicycle and pedestrian facilities in the City of Lexington. Additional information on trails in Lexington is found in the Transportation Plan.

