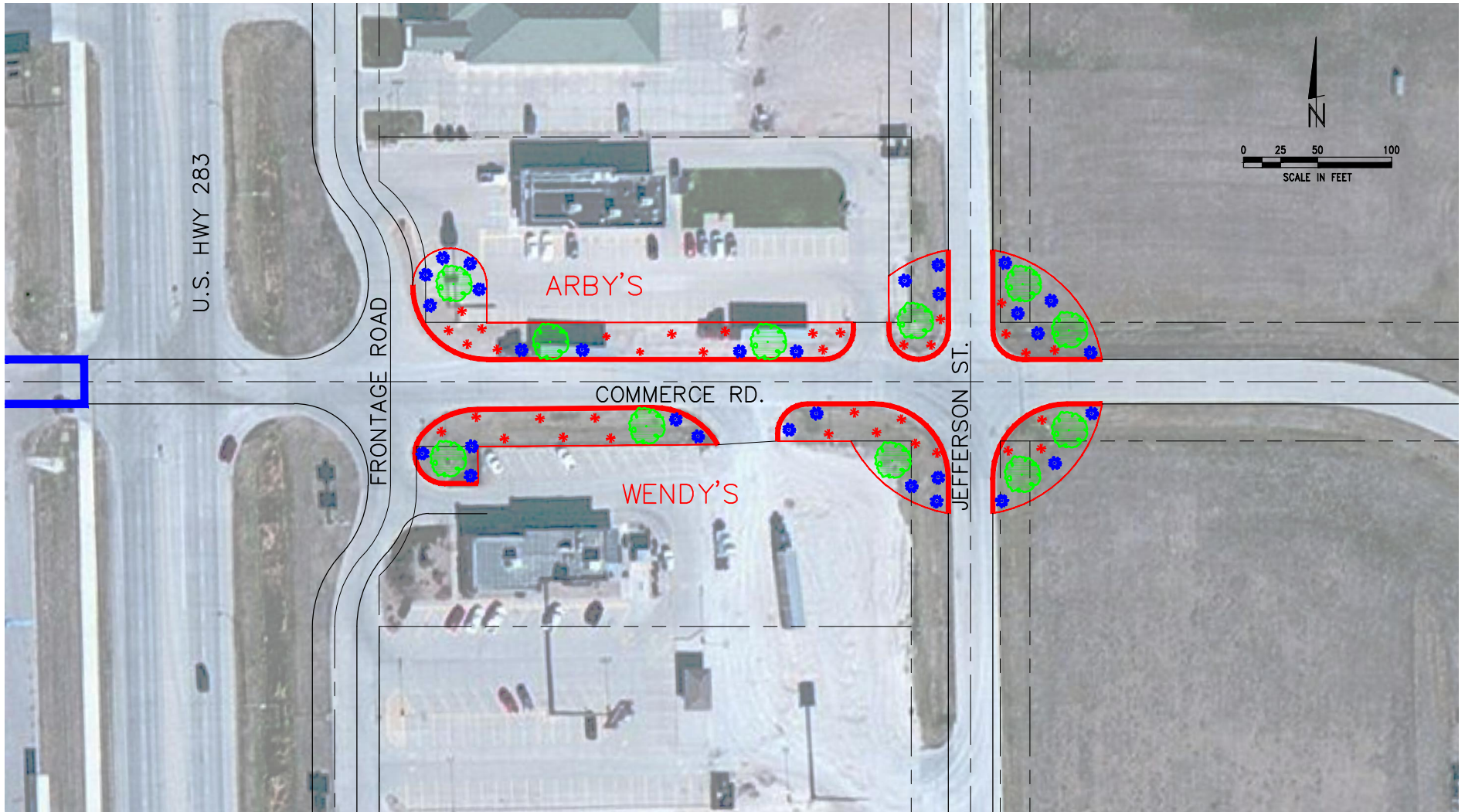






Preliminary Cost Estimate of Construction for Streetscape Improvements on Commerce Drive

6/15/2012

Description			Unit Price Range		Costruction Cost Range	
	<u>Quantity</u>	<u>Unit</u>	<u>Low</u>	<u>High</u>	<u>Low</u>	<u>High</u>
Install Curb & Gutter w/Tie Bars						
a. North of Wendy's	340	LF	\$ 25.00	\$ 30.00	\$ 8,500.00	\$ 10,200.00
b. South of Arby's	340	LF	\$ 25.00	\$ 30.00	\$ 8,500.00	\$ 10,200.00
c. NW Jefferson Intersection	-	LF	\$ 25.00	\$ 30.00	\$ -	\$ -
d. SW Jefferson Intersection	-	LF	\$ 25.00	\$ 30.00	\$ -	\$ -
Drainage Structures/Improvements						
a. Grate Inlets	4	Each	\$ 2,000.00	\$ 2,500.00	\$ 8,000.00	\$ 10,000.00
b. Extend Existing piping	120	LF	\$ 20.00	\$ 25.00	\$ 2,400.00	\$ 3,000.00
Decorative Planting						
a. Grass	36	Each	\$ 35.00	\$ 35.00	\$ 1,260.00	\$ 1,260.00
b. Shrubs	29	Each	\$ 50.00	\$ 50.00	\$ 1,450.00	\$ 1,450.00
c. Trees	11	Each	\$ 500.00	\$ 500.00	\$ 5,500.00	\$ 5,500.00
Landscape Ground Covering w/Irrigation						
a. North of Wendy's	4,000	SF	\$ 3.00	\$ 4.00	\$ 12,000.00	\$ 16,000.00
b. South of Arby's	7,900	SF	\$ 3.00	\$ 4.00	\$ 23,700.00	\$ 31,600.00
c. NE Corner of Jefferson	-	SF	\$ 3.00	\$ 4.00	\$ -	\$ -
d. NW Corner of Jefferson	-	SF	\$ 3.00	\$ 4.00	\$ -	\$ -
e. SW Corner of Jefferson	-	SF	\$ 3.00	\$ 4.00	\$ -	\$ -
f. SE Corner of Jefferson	-	SF	\$ 3.00	\$ 4.00	\$ -	\$ -
Earthwork w/1.5 Depth of Fill						
a. 28,500 SF of area -0.65 Acres	1,600	CY	\$ 7.00	\$ 10.00	\$ 11,200.00	\$ 16,000.00
TOTAL DEVELOPMENT COST					\$ 82,510.00	\$ 105,210.00



LEGEND

-  TREE
-  LOW LEVEL BUSH
-  GRASS
-  NEW CURB & GUTTER

LANDSCAPING IMPROVEMENTS IN
 GREATER LEXINGTON ADDITION
 LEXINGTON, NEBRASKA

PREPARED BY:



MILLER & ASSOCIATES
 CONSULTING ENGINEERS, P.C.
 1111 CENTRAL AVENUE
 KEARNEY, NE 68847