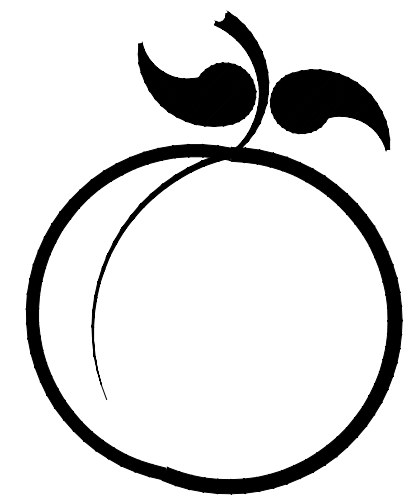


**PRELIMINARY
FOR REVIEW
12-7-23**

DRAWINGS FOR

POLK STREET LIFT STATION & FORCE MAIN IMPROVEMENTS

BID PACKAGE 1, BID PACKAGE 2 & BID PACKAGE 3



LEXINGTON, NEBRASKA 2023

M&A PROJECT NO. 127-D1-058-23

| INDEX OF DRAWINGS | |
|-------------------|--------------------------------|
| SHT. NO. | DESCRIPTION |
| 1 | TITLE SHEET & INDEX |
| 2 | LOCATION MAP & NOTES |
| 3-4 | PLAN & PROFILE - GRAVITY SEWER |
| 5-10 | PLAN & PROFILE - FORCEMAIN |
| 11 | LIFT STATION SITE PLAN |
| 12 | LIFT STATION DETAILS |
| 13-16 | DETAILS |

UTILITIES

GENERAL DIGGERS HOT LINE
8-1-1



MILLER & ASSOCIATES Consulting Engineers P.C.

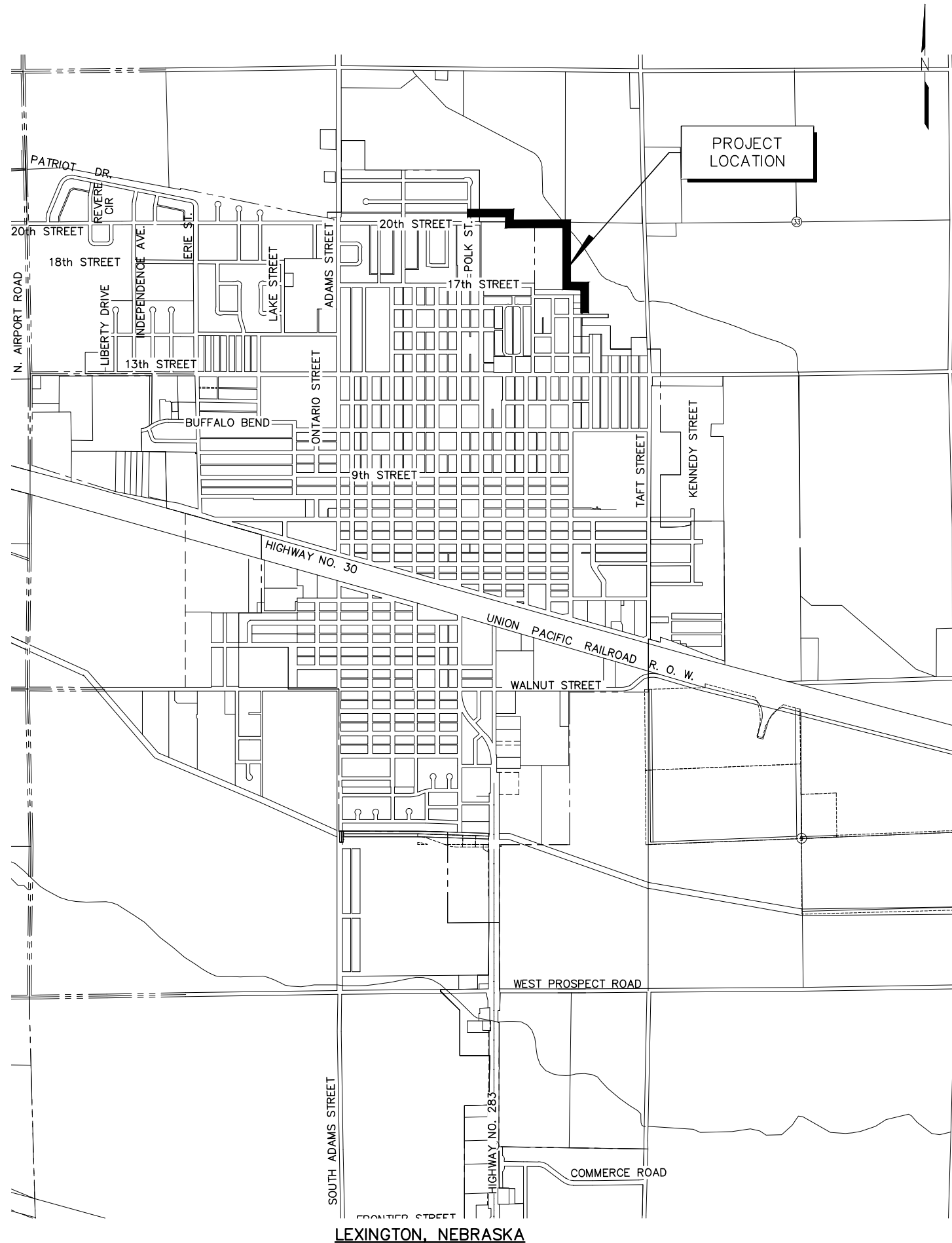
1111 CENTRAL AVE., KEARNEY, NE 68847
CERTIFICATE OF AUTHORIZATION #CA0021

SET NO. _____

DRAWING NO. _____

PLotted: 12/7/2023 12:05 PM
S:\Projects\127\127-D1-058\Cad-Dwg\Sheet Drawings\SH-GEN.dwg

12/7/2023 12:06 PM
 SAVED: 12/7/2023 11:55 AM
 Miller & Associates, P.C.
 C:\Projects\127\127-01-058\Civil-Design\Sheet Drawings\SA-GEN.dwg



PROJECT LOCATION

LEGEND

| SYMBOL | DESCRIPTION | SYMBOL | DESCRIPTION |
|----------|-----------------------------------|----------|------------------------------|
| [Symbol] | HEDGE ROW, TREELINE, WOODS | [Symbol] | PROPERTY LINE |
| [Symbol] | HEDGES, BUSHES, SHRUBS OR WOODS | [Symbol] | CENTERLINE |
| [Symbol] | DECIDUOUS TREE AND TRUNK SIZE 16" | [Symbol] | SECTION LINE |
| [Symbol] | CONIFEROUS TREE AND TRUNK SIZE 8" | [Symbol] | RIGHT-OF-WAY |
| [Symbol] | GAS METER OR REGULATOR | [Symbol] | PERMANENT EASEMENT |
| [Symbol] | WATER METER | [Symbol] | CONSTRUCTION EASEMENT |
| [Symbol] | PROPOSED WATER VALVE | [Symbol] | 12" WATER MAIN AND SIZE |
| [Symbol] | EXISTING WATER VALVE | [Symbol] | 36" STORM SEWER AND SIZE |
| [Symbol] | PROPOSED FIRE HYDRANT | [Symbol] | 12" SANITARY SEWER AND SIZE |
| [Symbol] | EXISTING FIRE HYDRANT | [Symbol] | OHE OVERHEAD ELECTRICAL LINE |
| [Symbol] | ELECTRICAL BOX | [Symbol] | UNDERGROUND ELECTRICAL LINE |
| [Symbol] | POWER POLE | [Symbol] | UNDERGROUND TELEPHONE LINE |
| [Symbol] | POWER POLE WITH LIGHT | [Symbol] | UNDERGROUND GAS LINE |
| [Symbol] | GUY WIRE | [Symbol] | UNDERGROUND CABLE TV LINE |
| [Symbol] | TRAFFIC LIGHT | [Symbol] | UNDERGROUND FIBER OPTIC LINE |
| [Symbol] | TELEPHONE RISER | [Symbol] | EXISTING GROUND CONTOUR 274' |
| [Symbol] | STREET SIGN | [Symbol] | NEW GROUND CONTOUR 274' |
| [Symbol] | MAILBOX | [Symbol] | DRAINAGE COURSE OR FLOW LINE |
| [Symbol] | SECTION CORNER | [Symbol] | CURB INLET |
| [Symbol] | CONTROL POINT, TBM | [Symbol] | GRATE INLET |
| [Symbol] | PROPERTY PIN | [Symbol] | MANHOLE |
| [Symbol] | CULVERT | [Symbol] | CLEANOUT |
| [Symbol] | RAILROAD TRACKS | [Symbol] | MONITOR WELL LOCATION |
| [Symbol] | BASE LINE | | |
| [Symbol] | FENCE | | |

NOTES:

1. CONTRACTOR IS TO COORDINATE ALL STREET CLOSINGS WITH THE CITY OF LEXINGTON. NOTIFY FIRE/RESCUE DEPARTMENT, AND ALL ADJOINING PROPERTY OWNERS 72 HOURS PRIOR TO CLOSING STREETS OR DRIVES, OR AS NOTED IN THE SPECIFICATIONS.
2. THE LOCATION OF ALL AERIAL AND UNDERGROUND UTILITY FACILITIES MAY NOT BE INDICATED IN THESE DRAWINGS. UNDERGROUND UTILITIES, WHETHER INDICATED OR NOT, WILL BE LOCATED AND FLAGGED BY THE UTILITIES AT THE REQUEST OF THE CONTRACTOR.
3. NO EXCAVATION WILL BE PERMITTED IN THE AREA OF UNDERGROUND UTILITY FACILITIES UNTIL ALL SUCH FACILITIES HAVE BEEN LOCATED AND IDENTIFIED TO THE SATISFACTION OF ALL PARTIES AND THEN ONLY WITH EXTREME CARE TO AVOID ANY POSSIBILITY OF DAMAGE TO THE UTILITY FACILITY.
4. ALL SIGNS, MAILBOXES, CULVERTS, GUYWIRES, FENCES, AND PROPERTY PINS ENCOUNTERED DURING THE CONTRACTOR'S OPERATIONS SHALL BE RESTORED TO ORIGINAL CONDITION AT THE CONTRACTOR'S EXPENSE.
5. THE QUANTITIES OF EACH ITEM LISTED ON THE BID SCHEDULE MAY VARY FROM THE TOTAL QUANTITIES. THE CITY MAY ADD OR DELETE FROM THE PROJECT, PORTIONS OF IMPROVEMENTS.
6. SAW CUTTING OF PAVEMENT IS REQUIRED FOR REMOVAL AND IS INCIDENTAL TO THE PROJECT. ADDITIONAL SAW CUTTING BEYOND THAT WHICH IS INDICATED ON THE DRAWINGS MAY BE REQUIRED.
7. TOPSOIL SHALL BE REMOVED, STOCKPILED AND REPLACED FOR ALL EXCAVATION AREAS.
8. CONTRACTOR SHALL GUARD AND PROTECT ALL TREES, SHRUBS, FENCES, AND OTHER ITEMS NOT SPECIFICALLY MARKED FOR REMOVAL.
9. THE CONTRACTOR MAY CLOSE THE ROAD TO ALL BUT LOCAL TRAFFIC SUBJECT TO THE CONDITIONS PRESCRIBED IN THE STANDARD SPECIFICATIONS.
10. THE CONTRACTOR SHALL COORDINATE WITH CITY AND FIND A SUITABLE LOCATION BEYOND THE LIMITS OF THE RIGHT-OF-WAY TO DISPOSE OF EXCESS MATERIAL.

POLK STREET LIFT STATION & FORCE MAIN IMPROVEMENTS
LOCATION MAP & NOTES
 LEXINGTON, NEBRASKA

PRELIMINARY FOR REVIEW 11-10-23

VERIFY SCALES
 BAR IS ONE INCH ON ORIGINAL DRAWING
 IF NOT ONE INCH ON THIS SHEET, ADJUST SCALES ACCORDINGLY.

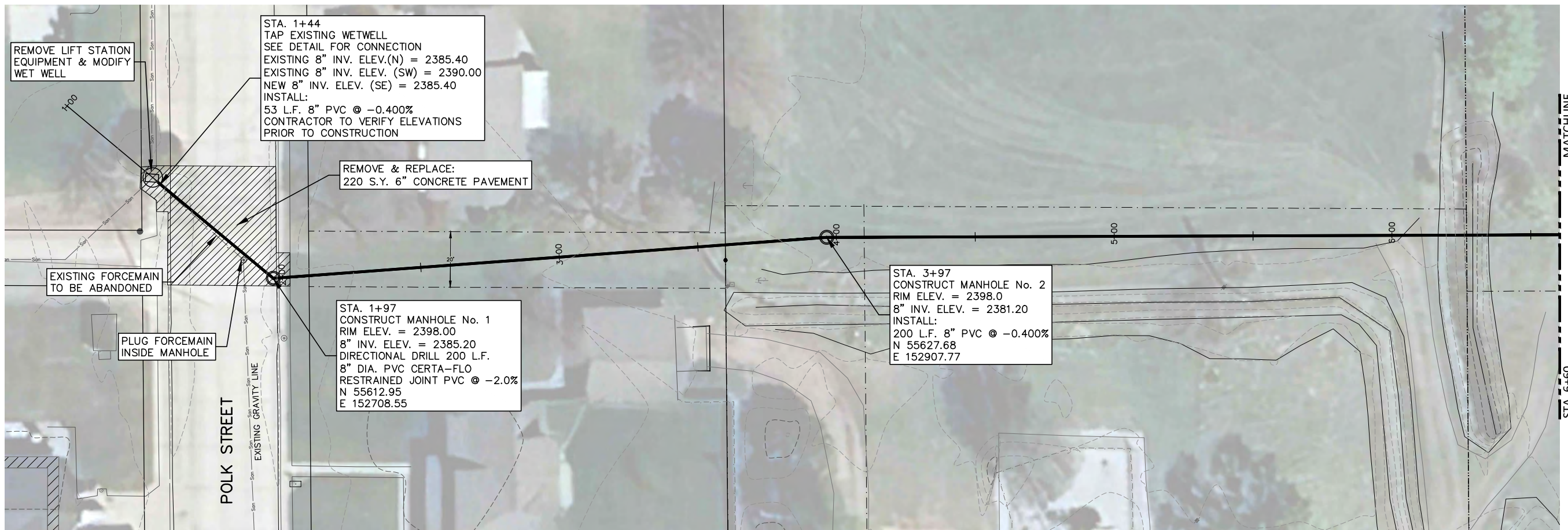
| | |
|--------------|---------------|
| SCALE: | NO SCALE |
| PROJECT NO.: | 127-D1-058 |
| DATE: | NOVEMBER 2023 |
| FIELD BOOK: | M&A DWG NO. x |
| DRAWN BY: | APRVD BY: |
| SHEET | 2 |

REVISIONS BY

M&A
 Miller & Associates
 Consulting Engineers, P.C.
 Kearney, NE (308) 234-6456
 McCook, NE (308) 345-3710

This document, and the ideas and designs incorporated herein, are the property of Miller & Associates and its not to be used in whole or in part, for any other project without the written authorization of Miller & Associates.

1 2 3 4 5 6

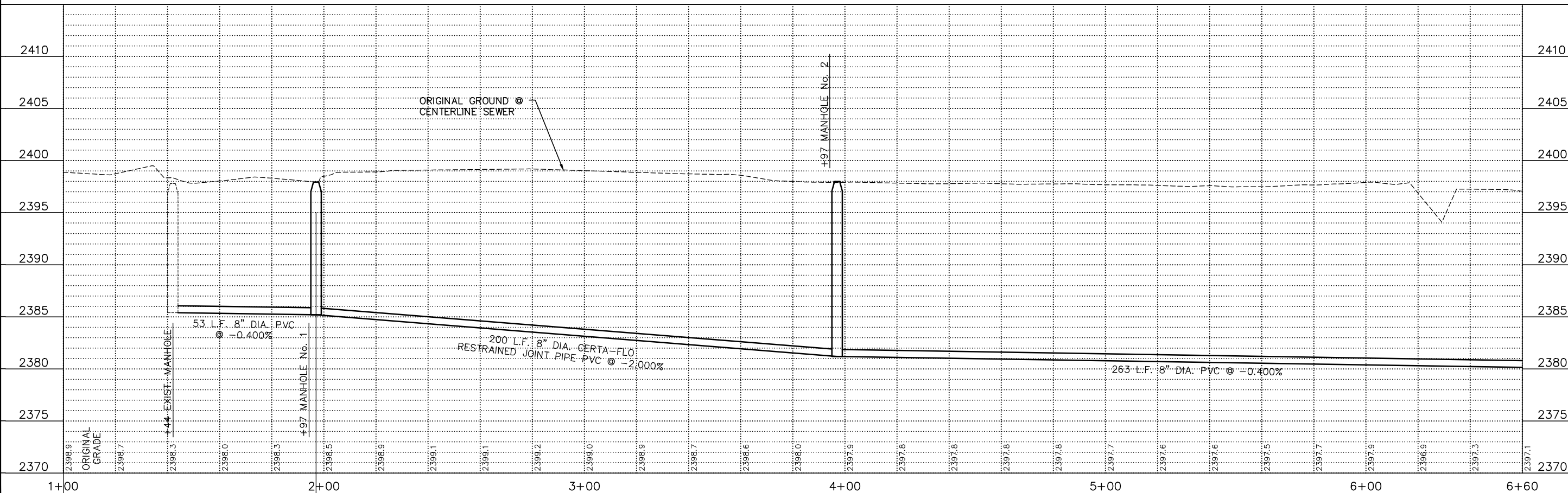


| REVISIONS | BY |
|-----------|----|
| | |
| | |

M&A
Miller & Associates
Consulting Engineers, P.C.
Kearney, NE (308) 234-6456
McCook, NE (308) 345-3710

POLK STREET LIFT STATION & FORCE MAIN IMPROVEMENTS
PLAN & PROFILE - GRAVITY SEWER
LEXINGTON, NEBRASKA

PROJECT: 12/8/2023 12:35 AM
SAVE: 12/8/2023 12:35 AM
C:\Projects\127127-01-058 (Civil-Drwg) Sheet Drawings\SH_PP.dwg



PRELIMINARY FOR REVIEW
12-7-23

VERIFY SCALES

BAR IS ONE INCH ON ORIGINAL DRAWING

IF NOT ONE INCH ON THIS SHEET, ADJUST SCALES ACCORDINGLY.

SCALE: 1"=5' VERT.
1"=20' HORIZ.

PROJECT NO. 127-D1-058

DATE: DECEMBER 2023

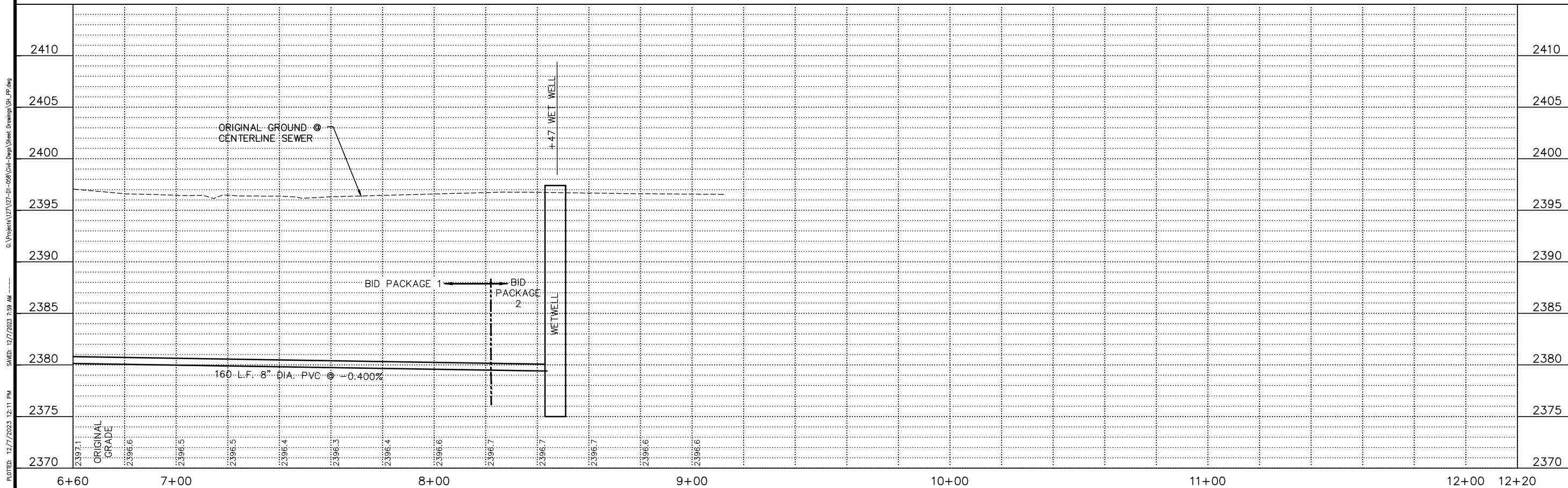
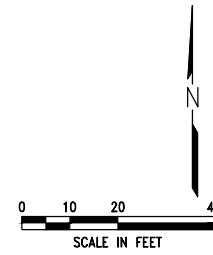
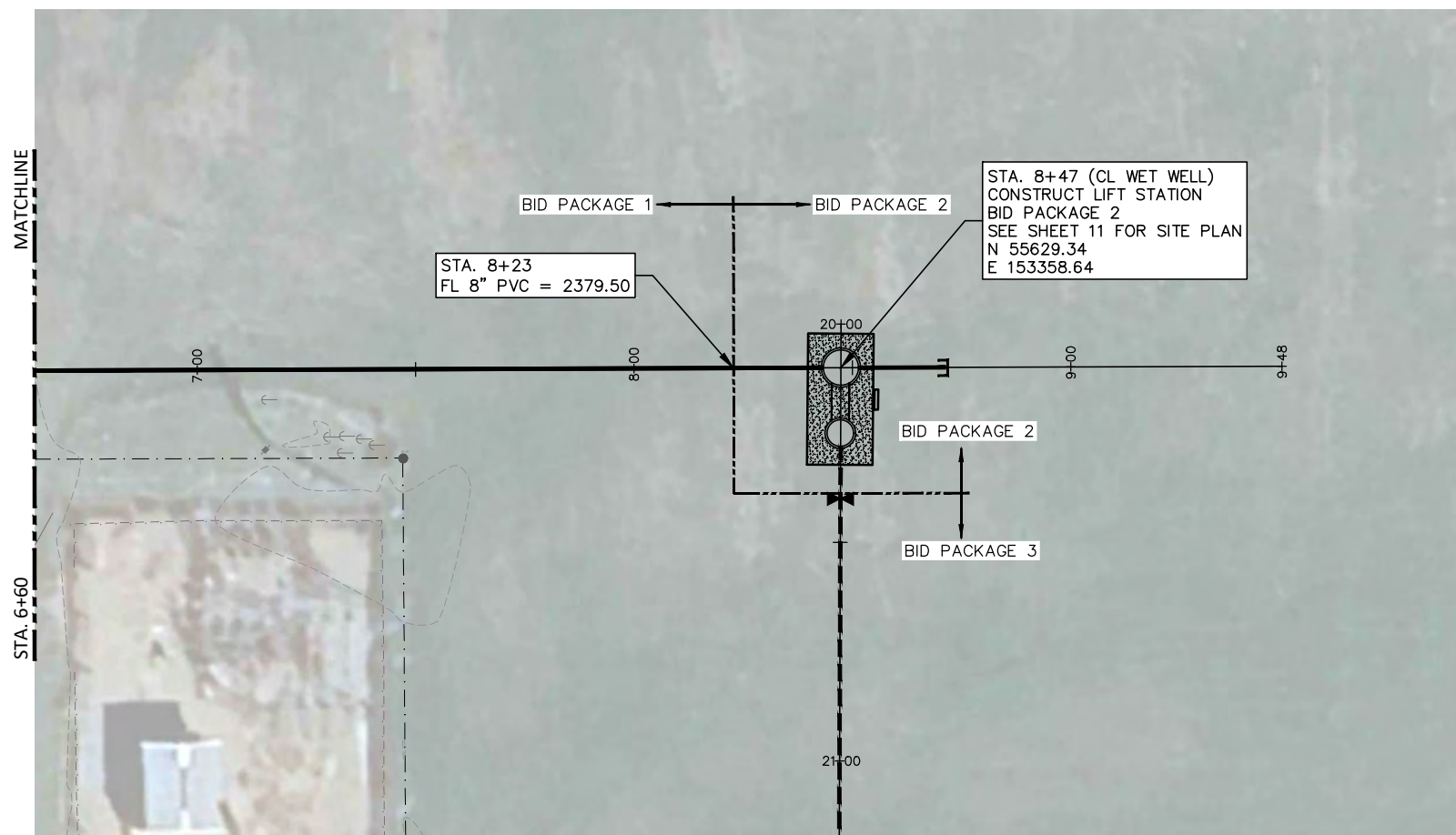
FIELD BOOK X
DRAWN BY: BSF
APRVD BY: M&A DWG NO. X

SHEET 3

7

8

9



| REVISIONS | BY |
|-----------|----|
| | |
| | |

M&A
 Miller & Associates
 Consulting Engineers, P.C.
 Kearney, NE (308) 234-6456
 McCook, NE (308) 345-3710

POLK STREET LIFT STATION & FORCE MAIN IMPROVEMENTS
PLAN & PROFILE - GRAVITY SEWER
 LEXINGTON, NEBRASKA

PRELIMINARY FOR REVIEW
 12-7-23

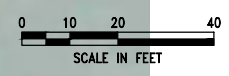
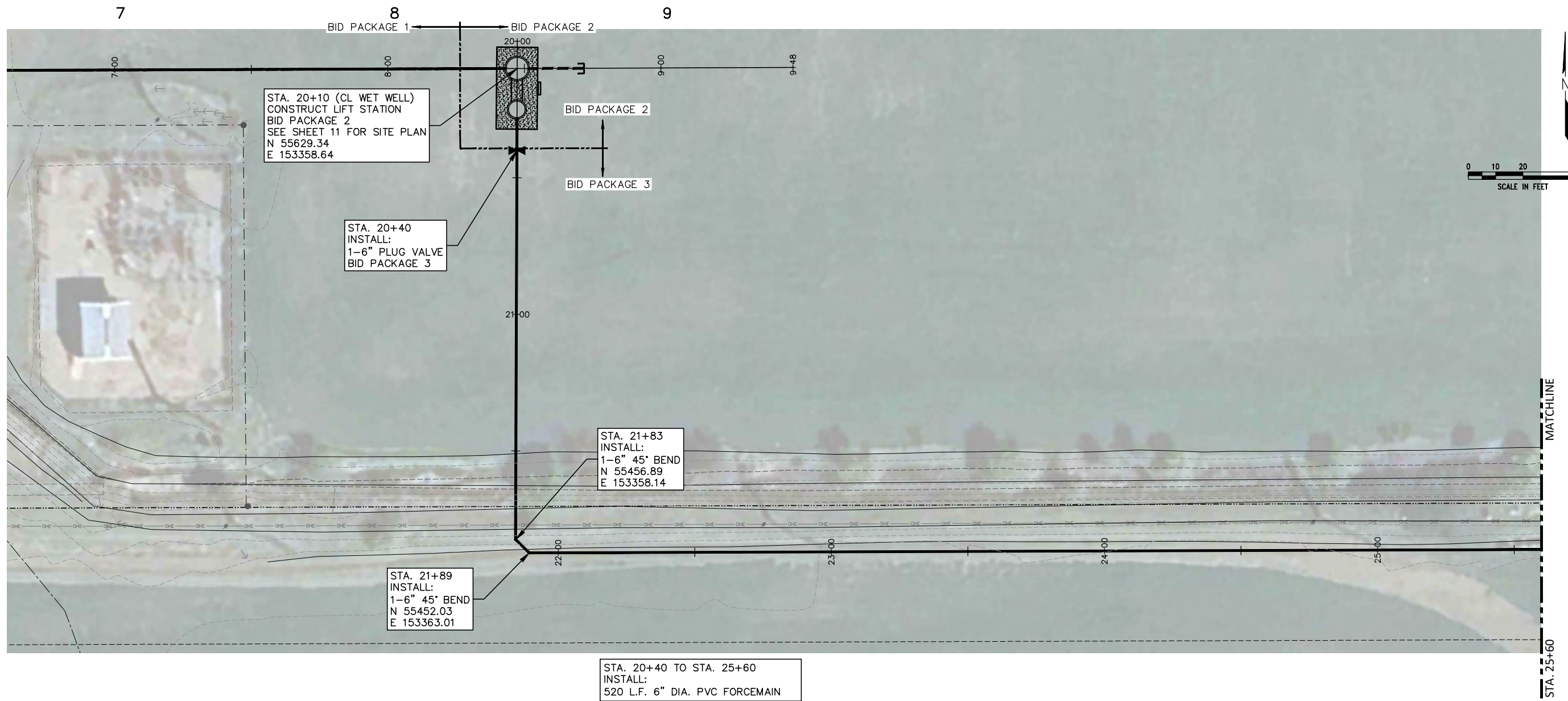
VERIFY SCALES
 BAR IS ONE INCH ON ORIGINAL DRAWING
 IF NOT ONE INCH ON THIS SHEET, ADJUST SCALES ACCORDINGLY.

SCALE: 1"=5' VERT.
 1"=20' HORIZ.

PROJECT NO.: 127-D1-058
 DATE: DECEMBER 2023
 FIELD BOOK: X
 M&A DWG NO.: X
 DRAWN BY: BSF
 APRVD BY: [Signature]
 SHEET: 4

PLOTTED: 12/7/2023 12:11 PM
 SAVE: 12/7/2023 3:59 AM
 C:\Projects\127-D1-058 (Polk-Drugs) (Sheet Drawings)\SH-PR-Plan

PLOT DATE: 12/7/2023 12:11 PM
 SAVE: 12/7/2023 3:59 AM
 C:\Projects\127-D1-058 (City-Drainage) Sheet Drawings\SI-PR.dwg

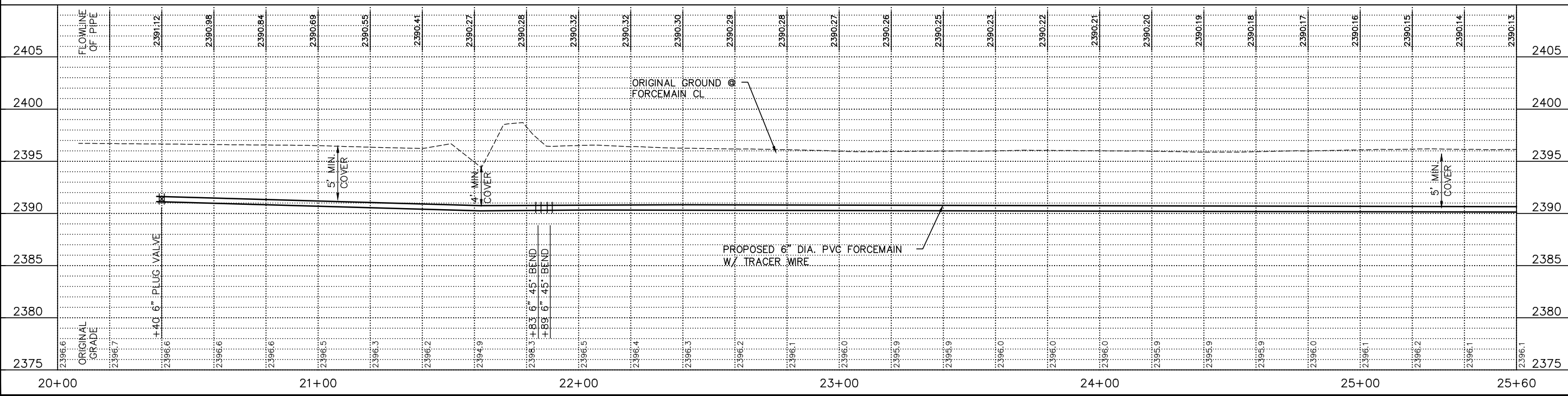


| REVISIONS | BY |
|-----------|----|
| | |
| | |

MA
 Miller & Associates
 Consulting Engineers, P.C.
 Kearney, NE (308) 234-6456
 McCook, NE (308) 345-3710

POLK STREET LIFT STATION & FORCE MAIN IMPROVEMENTS
PLAN & PROFILE - FORCEMAIN
 LEXINGTON, NEBRASKA

This document, and the ideas and designs incorporated herein, is the property of Miller & Associates and is not to be used in whole or in part, for any other project without the written authorization of © 2023 Miller & Associates.



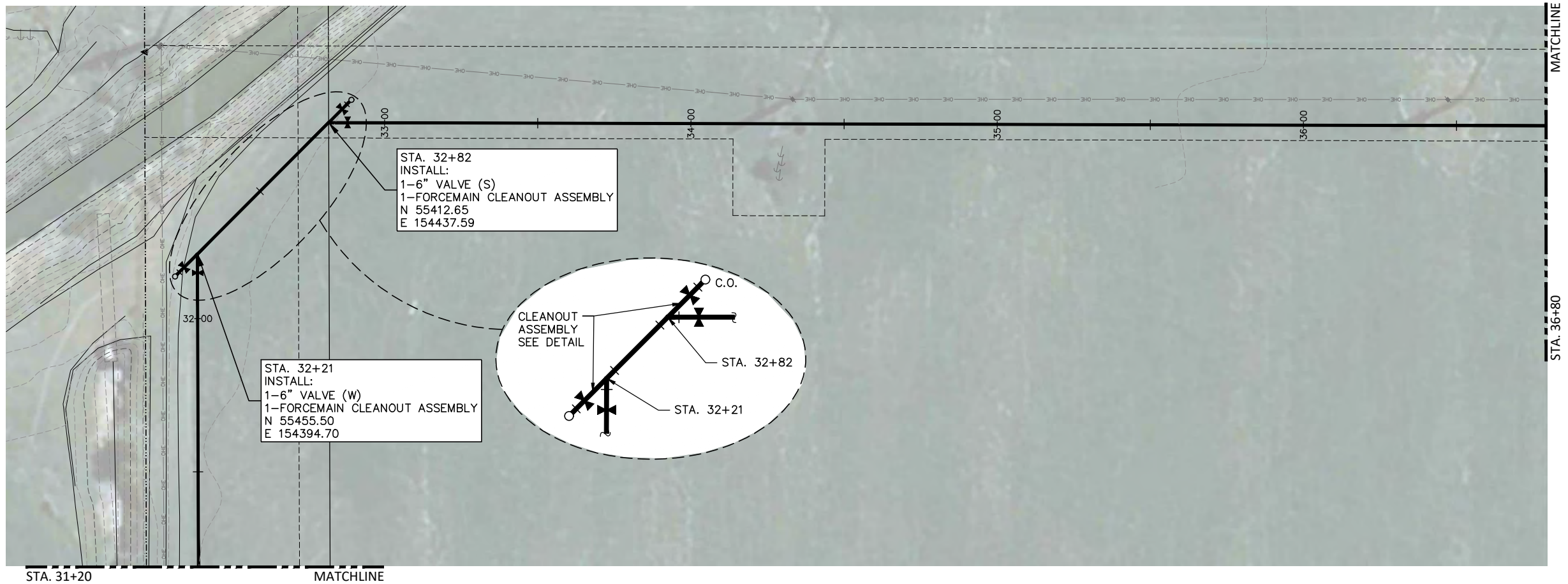
PRELIMINARY
 FOR REVIEW
 12-7-23

VERIFY SCALES
 BAR IS ONE INCH ON ORIGINAL DRAWING
 IF NOT ONE INCH ON THIS SHEET, ADJUST SCALES ACCORDINGLY.

SCALE: 1"=5' VERT.
 1"=20' HORIZ.

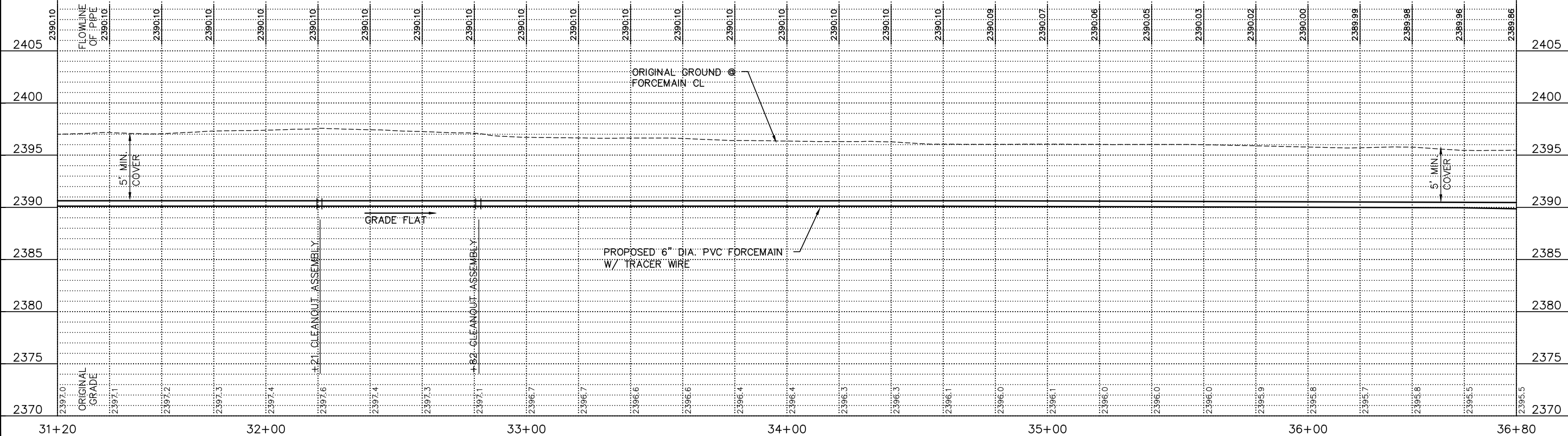
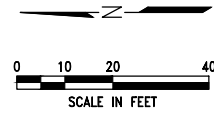
PROJECT NO.: 127-D1-058
 DATE: DECEMBER 2023
 FIELD BOOK: X
 DRAWN BY: BSF
 M&A DWG NO.: X
 APRVD BY:

SHEET **5**



STA. 31+20 MATCHLINE STA. 36+80 MATCHLINE

STA. 31+20 TO STA. 36+80
INSTALL:
560 L.F. 6" DIA. PVC FORCEMAIN



| REVISIONS | BY |
|-----------|----|
| | |
| | |

M&A
Miller & Associates
Consulting Engineers, P.C.
Kearney, NE (308) 234-6456
McCook, NE (308) 345-3710

POLK STREET LIFT STATION & FORCE MAIN IMPROVEMENTS
PLAN & PROFILE - FORCEMAIN
LEXINGTON, NEBRASKA

PRELIMINARY FOR REVIEW
12-7-23

| | |
|---|------------------------------|
| VERIFY SCALES | |
| BAR IS ONE INCH ON ORIGINAL DRAWING | |
| IF NOT ONE INCH ON THIS SHEET, ADJUST SCALES ACCORDINGLY. | |
| SCALE: | 1"=5' VERT. 1"=20' HORIZ. |
| PROJECT NO.: | 127-D1-058 |
| DATE: | DECEMBER 2023 |
| FIELD BOOK | X |
| M&A DWG NO. | X |
| DRAWN BY: | BSF |
| APRVD BY: | |
| SHEET | 7 |

C:\Projects\127-D1-058 (Polk-Drugs) Sheet Drawings\SI_IP.dwg
 PLOTTED: 12/7/2023 12:19 PM
 NAME: 12/7/2023 3:59 AM

This document, and the ideas and designs incorporated herein, are the property of Miller & Associates and is not to be used in whole or in part for any other project without the written authorization of Miller & Associates.

37

38

39

40

41

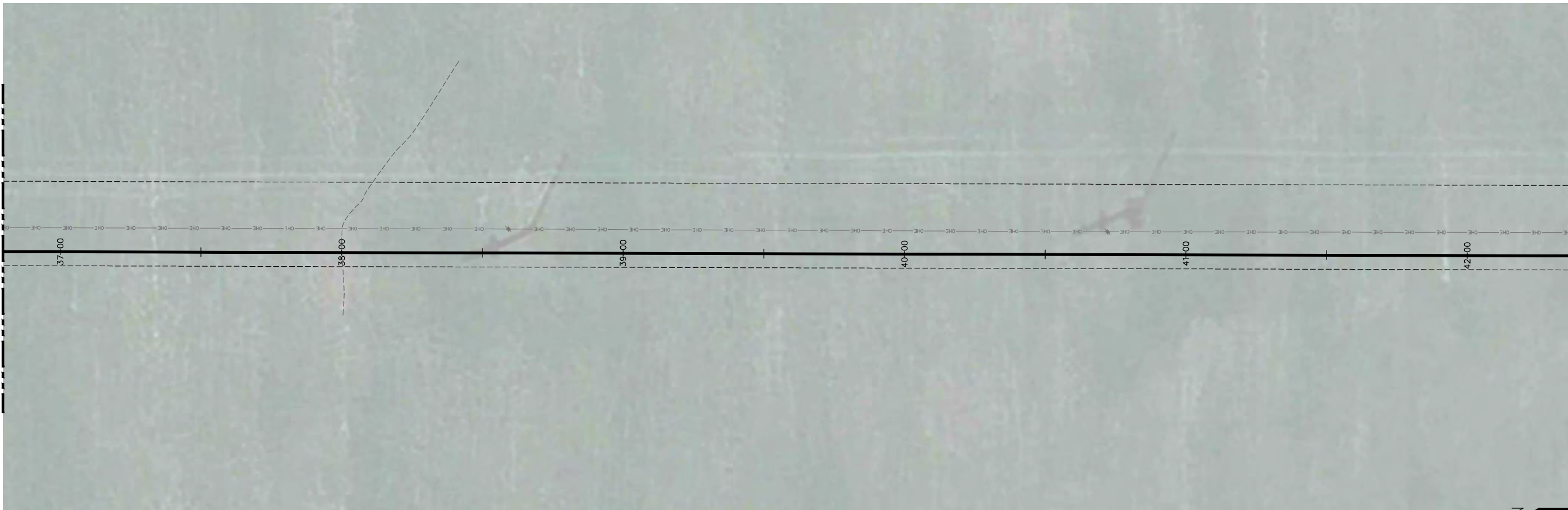
42

MATCHLINE

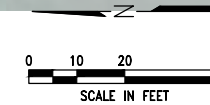
MATCHLINE

STA. 36+80

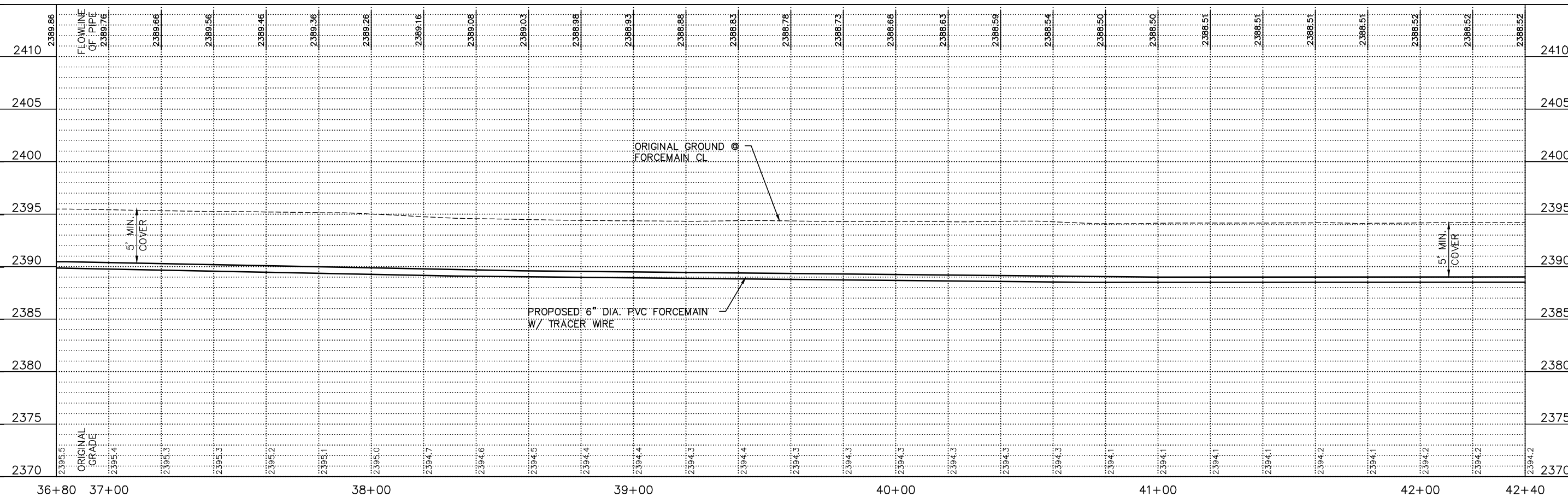
STA. 42+40



STA. 36+80 TO STA. 42+40
 INSTALL:
 560 L.F. 6" DIA. PVC FORCEMAIN



PLOT DATE: 12/7/2023 12:20 PM
 SAVE DATE: 12/7/2023 3:59 AM
 C:\Projects\127-D1-058 (Civil-Design Sheet Drawings)\SI_IP.dwg



REVISIONS BY

| | |
|--|--|
| | |
| | |
| | |

M&A
 Miller & Associates
 Consulting Engineers, P.C.
 Kearney, NE (308) 234-6456
 McCook, NE (308) 345-3710

POLK STREET LIFT STATION & FORCE MAIN IMPROVEMENTS
PLAN & PROFILE - FORCEMAIN
 LEXINGTON, NEBRASKA

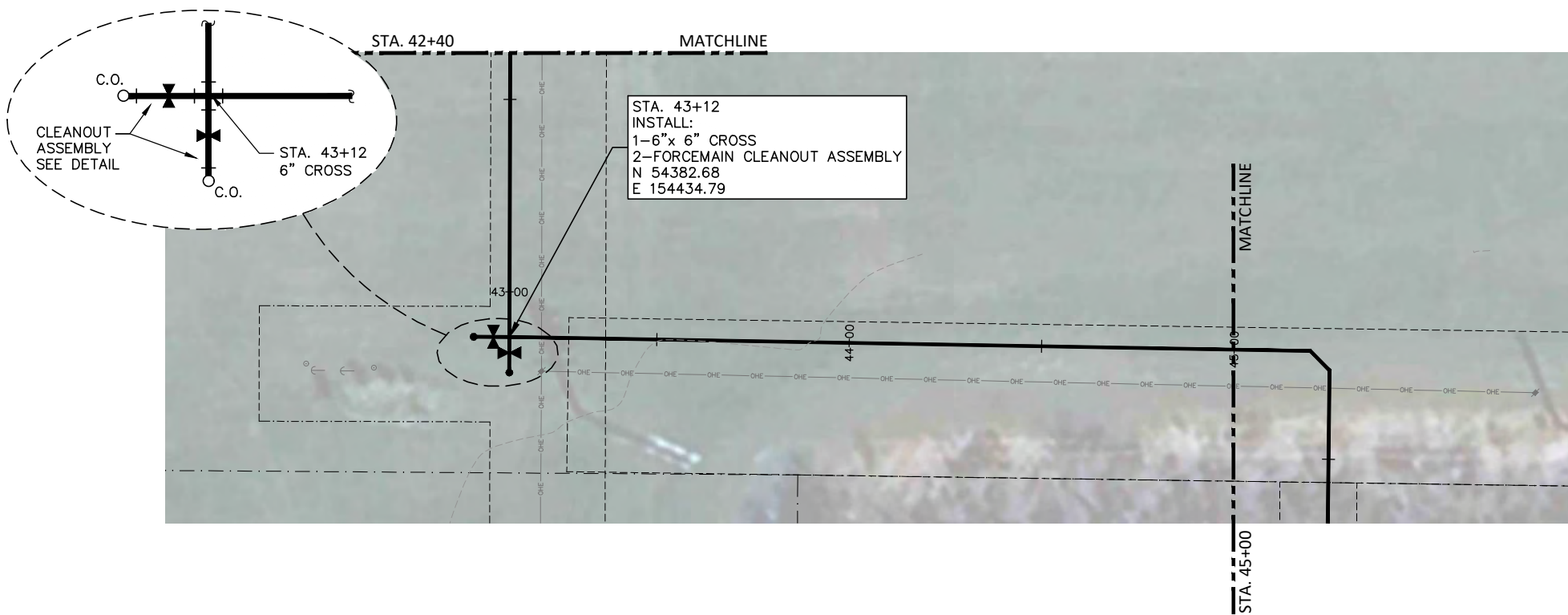
PRELIMINARY FOR REVIEW
 12-7-23

VERIFY SCALES
 BAR IS ONE INCH ON ORIGINAL DRAWING
 IF NOT ONE INCH ON THIS SHEET, ADJUST SCALES ACCORDINGLY.

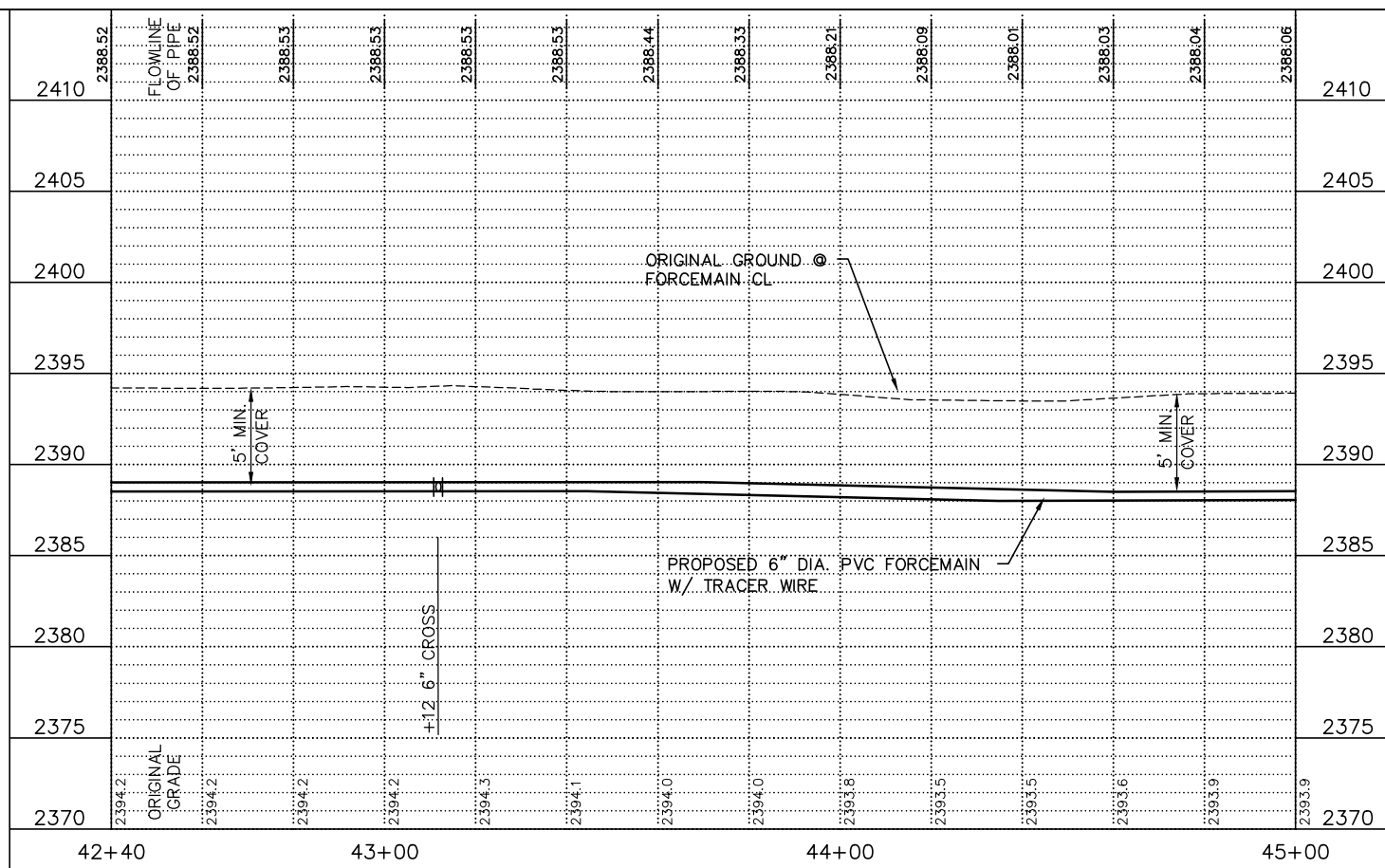
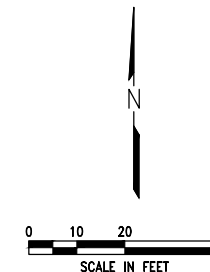
SCALE: 1"=5' VERT.
 1"=20' HORIZ.

PROJECT NO. 127-D1-058
 DATE: DECEMBER 2023
 FIELD BOOK X
 DRAWN BY: BSF
 APRVD BY: [Signature]
 SHEET 8

This document, and the ideas and designs incorporated herein, is the property of Miller & Associates and is not to be used in whole or in part, for any other project without the written authorization of Miller & Associates.



STA. 42+40 TO STA. 45+00
INSTALL:
260 L.F. 6" DIA. PVC FORCEMAIN



REVISIONS BY

M&A
Miller & Associates
Consulting Engineers, P.C.
Kearney, NE (308) 234-6456
McCook, NE (308) 345-3710

POLK STREET LIFT STATION & FORCE MAIN IMPROVEMENTS
PLAN & PROFILE - FORCEMAIN
LEXINGTON, NEBRASKA

PRELIMINARY FOR REVIEW
12-7-23

VERIFY SCALES
BAR IS ONE INCH ON ORIGINAL DRAWING
IF NOT ONE INCH ON THIS SHEET, ADJUST SCALES ACCORDINGLY.

SCALE: 1"=5' VERT.
1"=20' HORIZ.

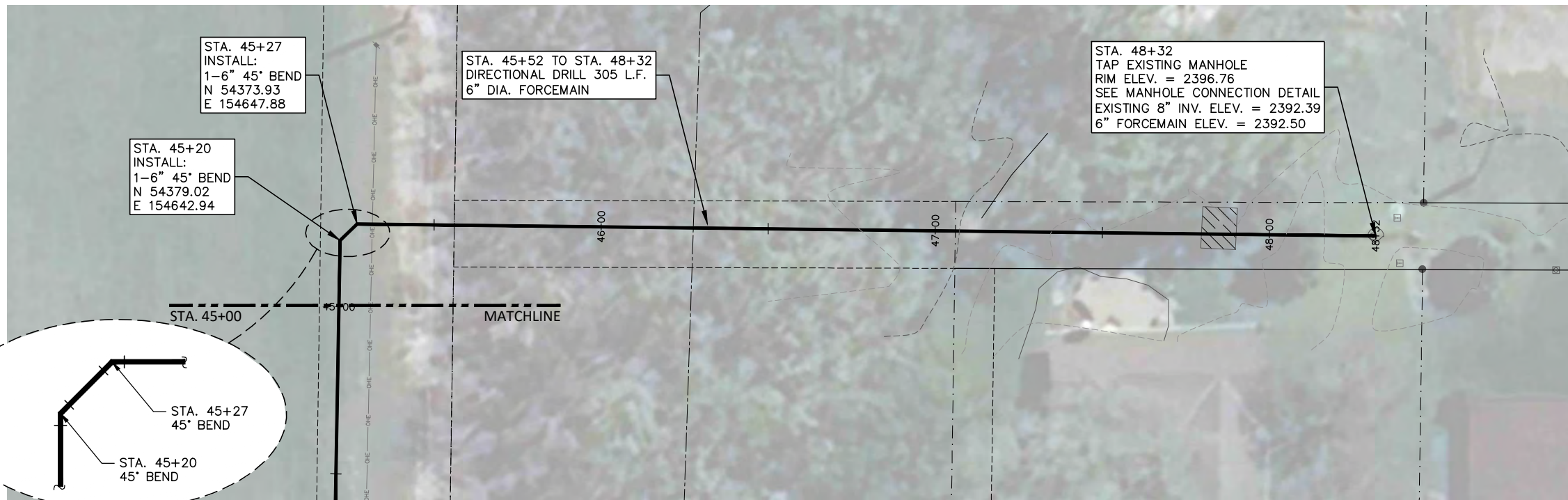
PROJECT NO.
127-D1-058

DATE:
DECEMBER 2023

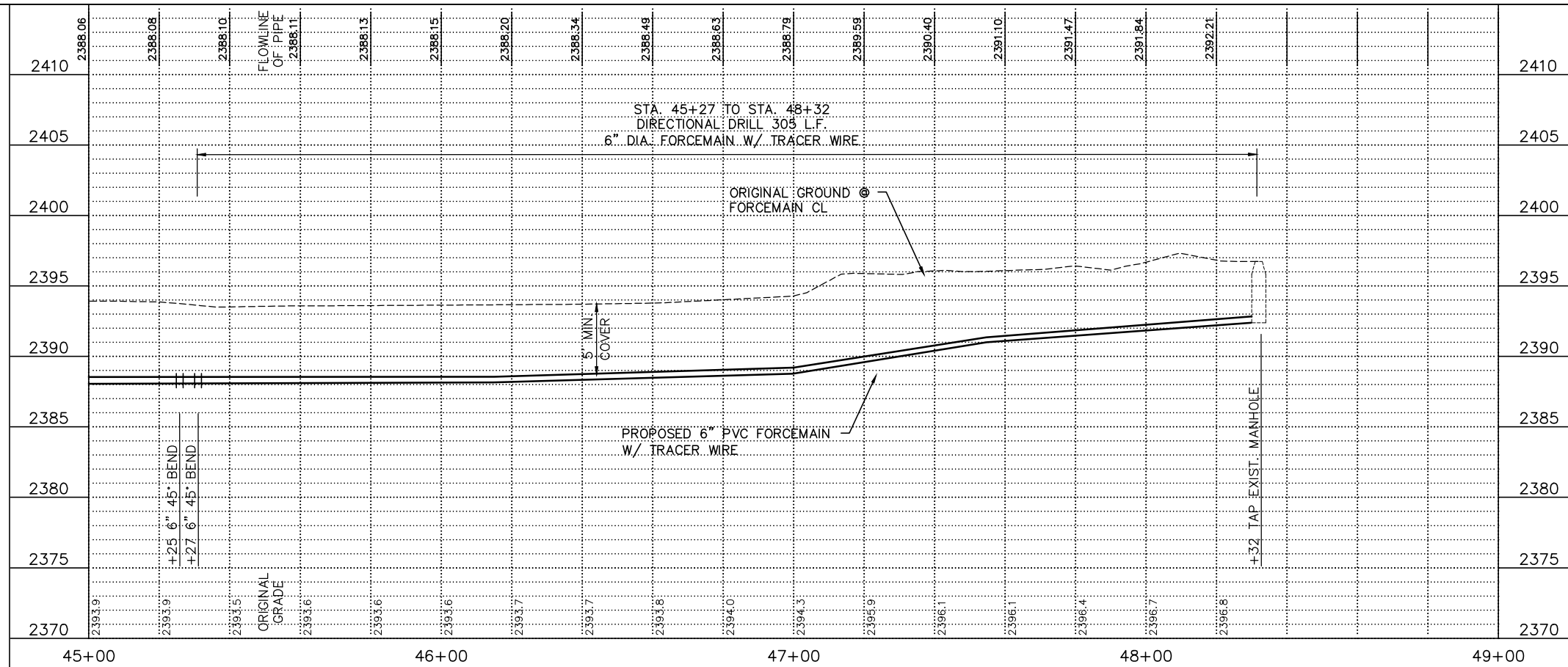
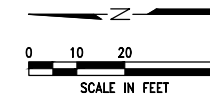
FIELD BOOK M&A DWG NO.
X

DRAWN BY: APRVD BY:
BSF

SHEET
9



STA. 45+00 TO STA. 48+32
 INSTALL:
 27 L.F. 6" DIA. PVC FORCEMAIN



| REVISIONS | BY |
|-----------|----|
| | |
| | |

M&A
 Miller & Associates
 Consulting Engineers, P.C.
 Kearney, NE (308) 234-6456
 McCook, NE (308) 345-3710

POLK STREET LIFT STATION & FORCE MAIN IMPROVEMENTS
PLAN & PROFILE - FORCEMAIN
 LEXINGTON, NEBRASKA

This document, and the ideas and designs incorporated herein, as an instrument of professional service, is the property of Miller & Associates and is not to be used in whole or in part, for any other project without the written authorization of © 2023 Miller & Associates.

PRELIMINARY FOR REVIEW
12-7-23

| | |
|---|------------------------------|
| VERIFY SCALES | |
| BAR IS ONE INCH ON ORIGINAL DRAWING | |
| IF NOT ONE INCH ON THIS SHEET, ADJUST SCALES ACCORDINGLY. | |
| SCALE: | 1"=5' VERT. 1"=20' HORIZ. |
| PROJECT NO. | 127-D1-058 |
| DATE: | DECEMBER 2023 |
| FIELD BOOK | M&A DWG NO. X |
| DRAWN BY: BSF | APRVD BY: |
| SHEET | 10 |

POLK STREET LIFT STATION & FORCE MAIN IMPROVEMENTS
LIFT STATION SITE PLAN
 LEXINGTON, NEBRASKA

PRELIMINARY FOR REVIEW
 12-7-23

VERIFY SCALES
 BAR IS ONE INCH ON ORIGINAL DRAWING
 0 1"
 IF NOT ONE INCH ON THIS SHEET, ADJUST SCALES ACCORDINGLY.

| | |
|-------------|---------------|
| SCALE: | |
| PROJECT NO. | 127-D1-058 |
| DATE: | DECEMBER 2023 |
| FIELD BOOK | M&A DWG NO. |
| DRAWN BY: | APRVD BY: |
| SHEET | 11 |

SEE SHEETS 3 & 4 FOR PROPOSED 8" SAN. SEWER PLANS

TOP OF PAD ELEV. = 2398.00
 100 YR. BASE FLOOD ELEV. = 2397.00

30'x15'x8" CONCRETE PAD
 W/ #4 @ 12" E.W., 2" CLEAR FROM BOTTOM OF SLAB

INSTALL:
 20 LF 10" PVC EAST @ 0.28%
 1-10" CAP
 INV. ELEV. @ CAP = 2379.56

CONTROL PANEL TO BE LOCATED & CONSTRUCTED BY OTHERS

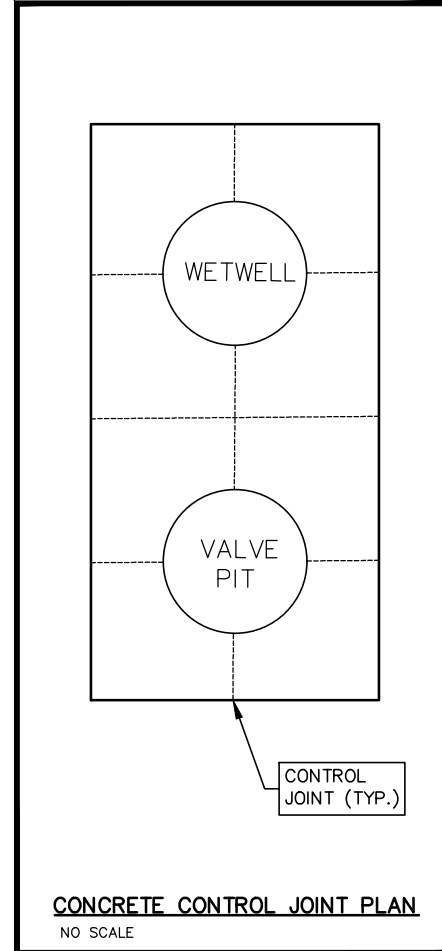
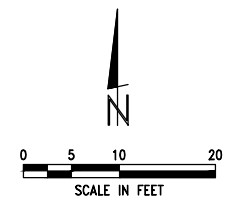
INSTALL:
 2" SCH. 40 PVC DRAIN
 W/SUPPLIED DRAIN CHECK VALVE

CITY TO COORDINATE ELECTRICAL SOURCE AND CONTROL SYSTEMS.

SEE SHEETS 5 THROUGH 10 FOR PROPOSED FORCEMAIN PLANS

LIFT STATION DESIGN NOTES

- 8'-0" I.D. WET WELL
- TOP OF DECK ELEV. = 2398.00
- 6" FORCEMAIN DISCHARGE INV. ELEV. = 2391.00
- 10" INFLUENT LINE INV. ELEV. = 2379.50
- 8" INFLUENT LINE INV. ELEV. = 2379.42
- FLOAT ELEVATIONS
 - ALARM = 2378.00
 - LAG PUMP START = 2377.00
 - LEAD PUMP START = 2376.00
 - PUMP OFF = 2371.00
- FLOOR ELEV. = 2369.00
- SEWAGE BYPASS CONNECTION IN VALVE PIT
- AIR RELEASE ASSEMBLY IN VALVE PIT
- GATE VALVE ON EACH DISCHARGE LINE & BYPASS CONNECTION.
- CHECK VALVE ON EACH DISCHARGE LINE.

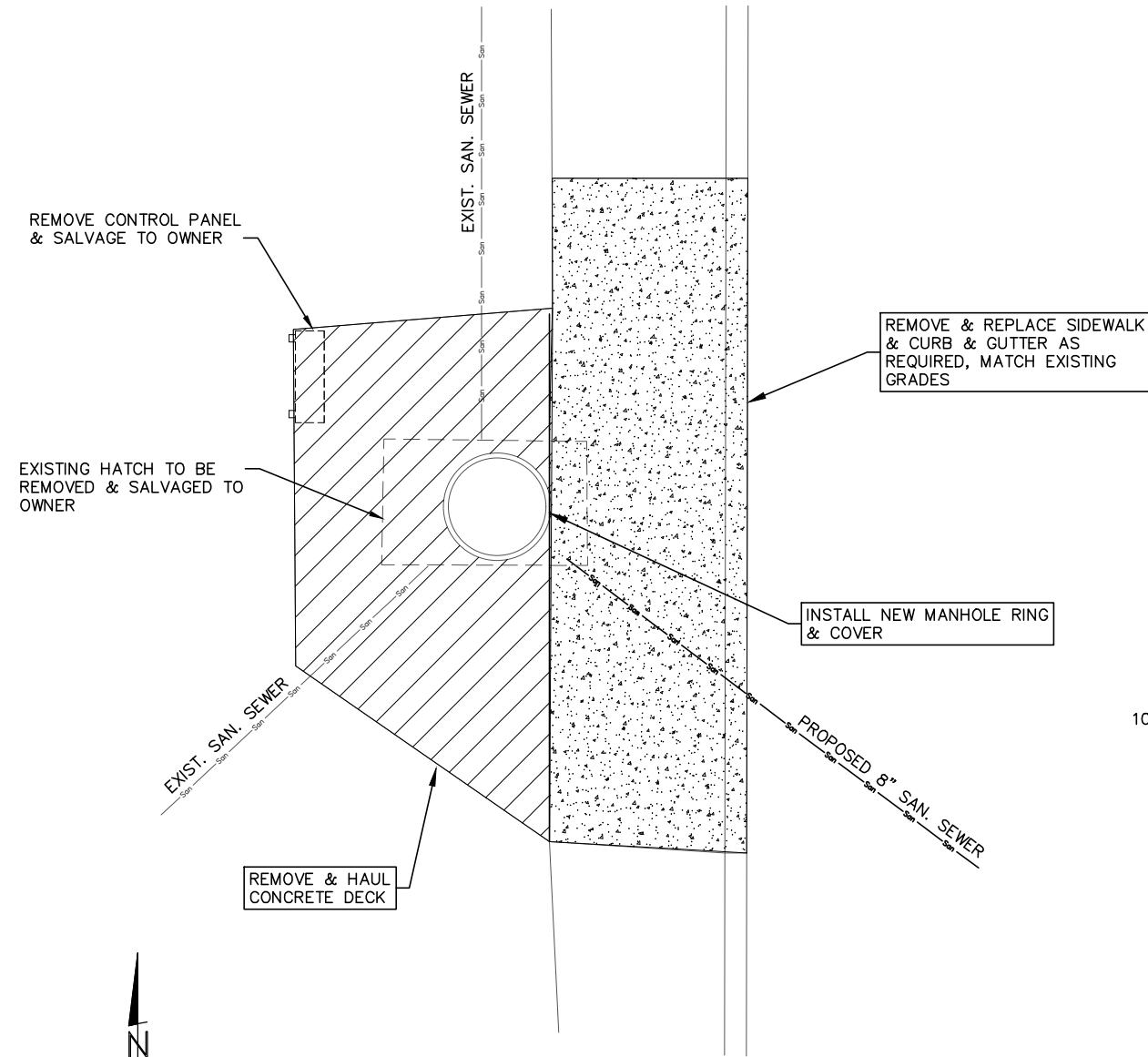


C:\Projects\127\127-D1-058 (Civil-Design) Sheet Drawings\SL-Lift Station.dwg
 SAVE: 12/8/2023 12:35 AM
 PLOTTED: 12/8/2023 12:35 AM

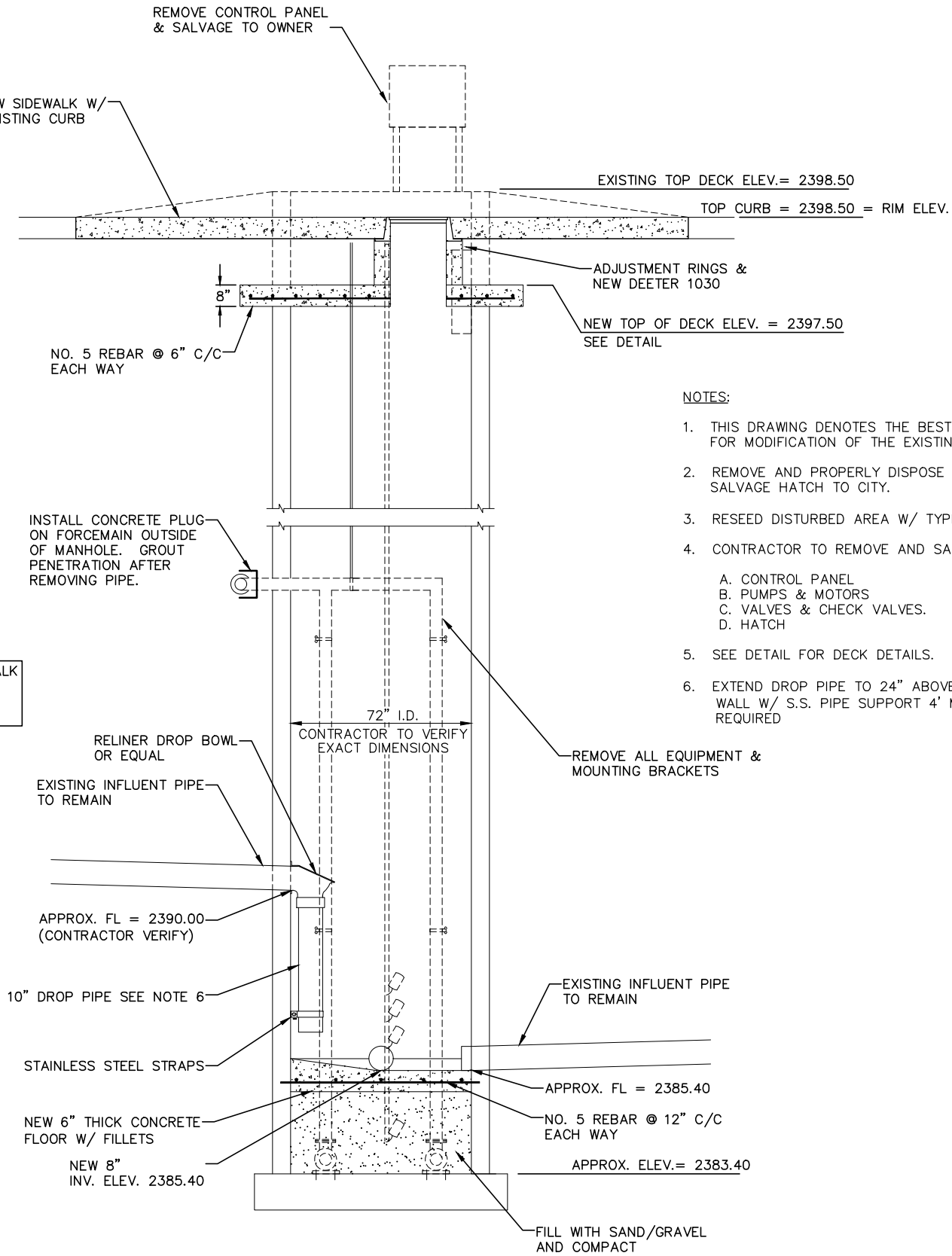
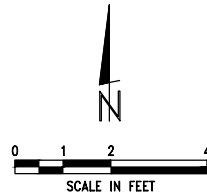
This document, and the ideas and designs incorporated herein, as an instrument of professional service, is the property of Miller & Associates and is not to be used in whole or in part for any other project without the written authorization of © 2023 Miller & Associates.



EXISTING LIFT STATION TO BE REMOVED



EXISTING LIFT STATION SITE PLAN
(INTERIOR)



EXISTING LIFT STATION SECTION
NO SCALE

NOTES:

1. THIS DRAWING DENOTES THE BEST INFORMATION AVAILABLE FOR MODIFICATION OF THE EXISTING LIFT STATION.
2. REMOVE AND PROPERLY DISPOSE OF CONCRETE DECK AND SALVAGE HATCH TO CITY.
3. RESEED DISTURBED AREA W/ TYPE B SEED.
4. CONTRACTOR TO REMOVE AND SALVAGE TO OWNER:
 - A. CONTROL PANEL
 - B. PUMPS & MOTORS
 - C. VALVES & CHECK VALVES.
 - D. HATCH
5. SEE DETAIL FOR DECK DETAILS.
6. EXTEND DROP PIPE TO 24" ABOVE FILLET. ANCHOR TO WALL W/ S.S. PIPE SUPPORT 4' MAX SPACING, 2 MIN. REQUIRED

POLK STREET LIFT STATION & FORCE MAIN IMPROVEMENTS
LIFT STATION MODIFICATION PLAN
LEXINGTON, NEBRASKA

PRELIMINARY FOR REVIEW
12-7-23

VERIFY SCALES
BAR IS ONE INCH ON ORIGINAL DRAWING
0 1"
IF NOT ONE INCH ON THIS SHEET, ADJUST SCALES ACCORDINGLY.

| | |
|-------------|---------------|
| SCALE: | |
| PROJECT NO. | 127-D1-058 |
| DATE: | DECEMBER 2023 |
| FIELD BOOK | X |
| M&A DWG NO. | X |
| DRAWN BY: | BSF |
| APRVD BY: | |
| SHEET | 12 |