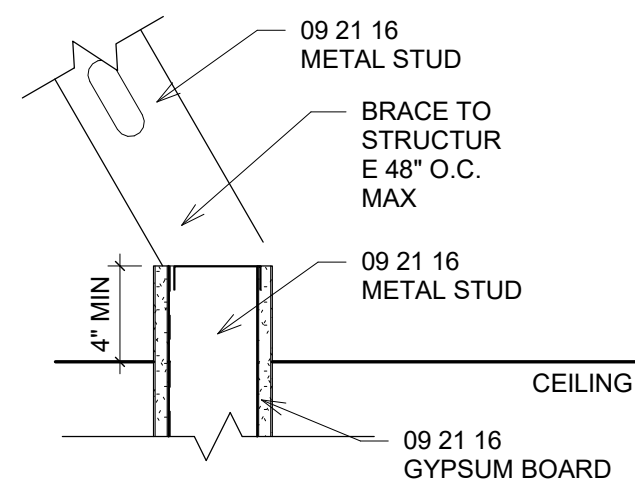
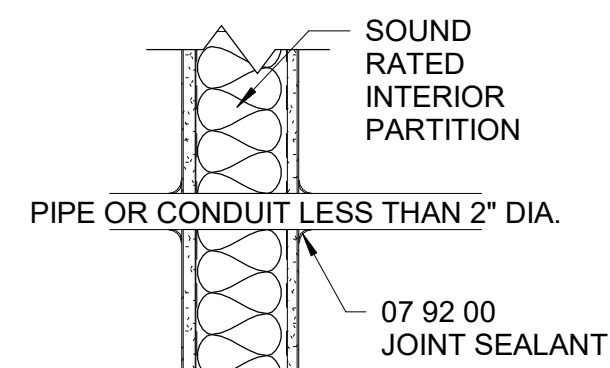
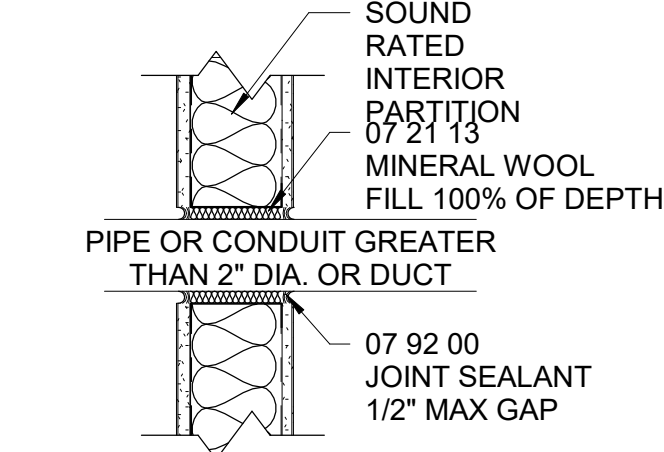


**CMU TOP OF WALLS - NOT TO DECK**

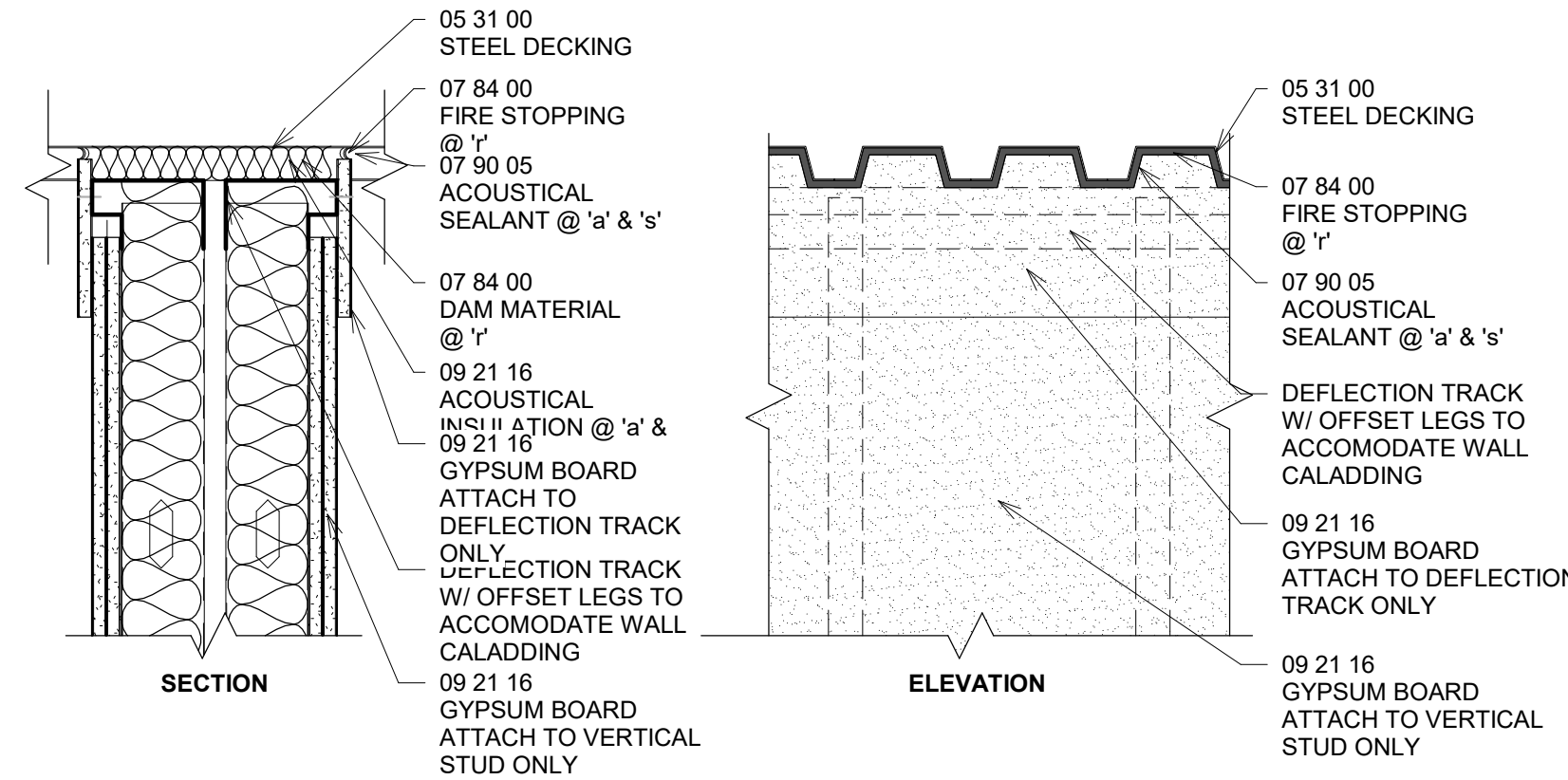


**STUD TOP OF WALLS - NOT TO DECK**



NOTE: PENETRATIONS AT ALL FIRE RATED WALLS SHOULD BE SEALED WITH APPROPRIATE FIRE STOPPING.

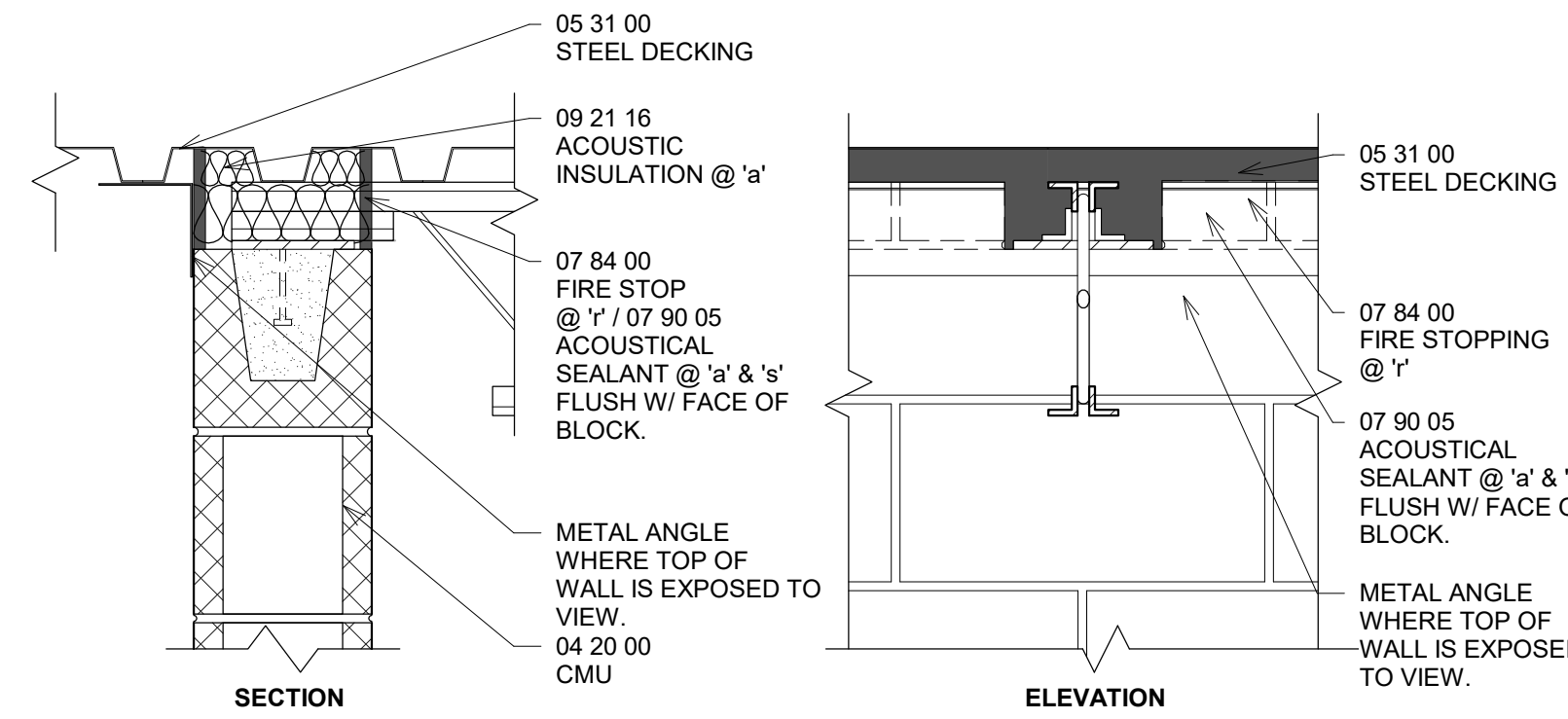
**PENETRATIONS THROUGH WALLS**



NOTE: JOINT SYSTEM REPRESENTATIVE OF UL ASSEMBLY HW-D-0061  
 -1" NOMINAL JOINT WIDTH  
 -CLASS II & III MOVEMENT CAPABILITIES: 100% COMPRESSION OR EXTENSION

**TOP OF DOUBLE STUD WALLS - NON-BEARING, PERPENDICULAR TO DECK**

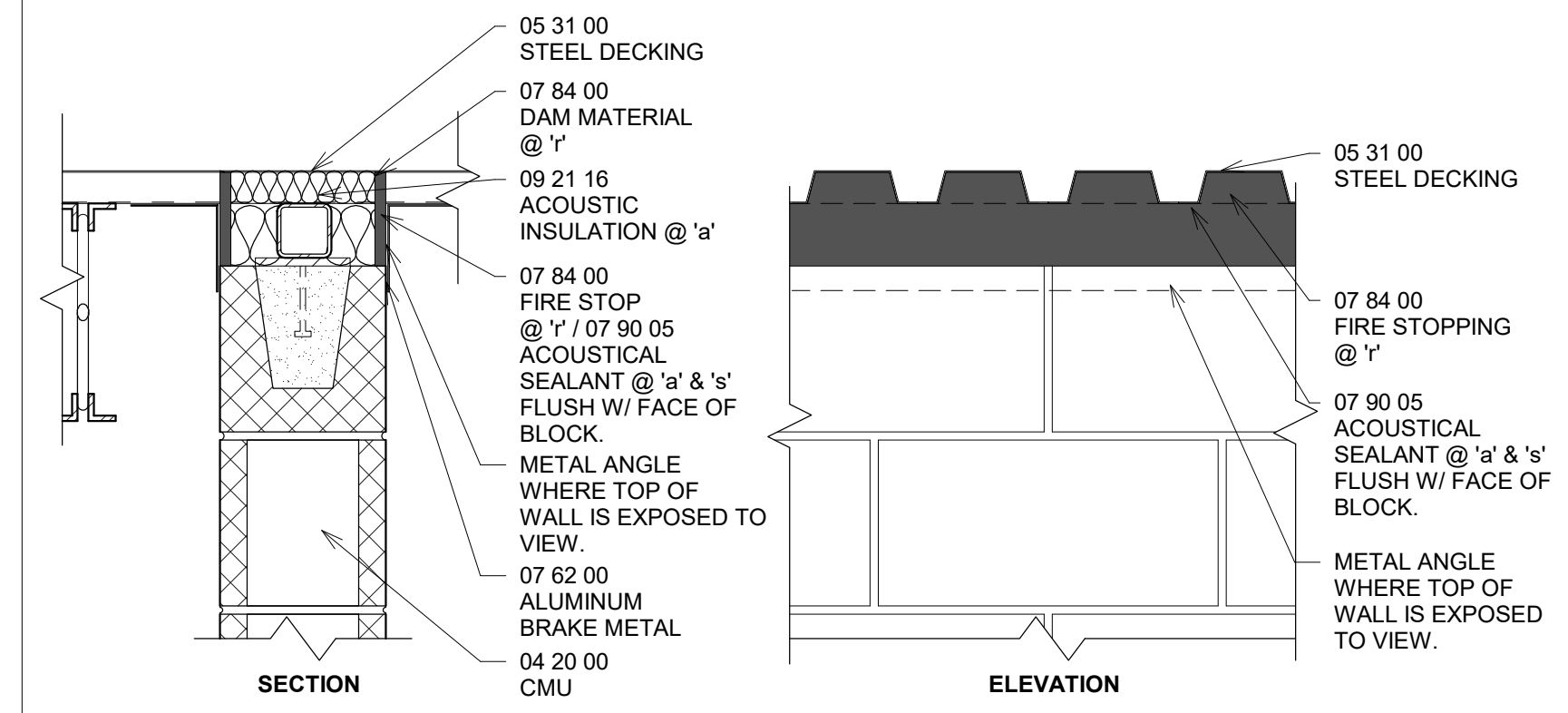
REFERENCE FOR: FIRE-RATED WALLS ACOUSTIC WALLS WALLS TO RESIST THE PASSAGE OF SMOKE



NOTE: JOINT SYSTEM REPRESENTATIVE OF UL ASSEMBLY HW-S-1006

**TOP OF CMU WALL - BEARING, PARALLEL TO DECK @ JOIST BEARING**

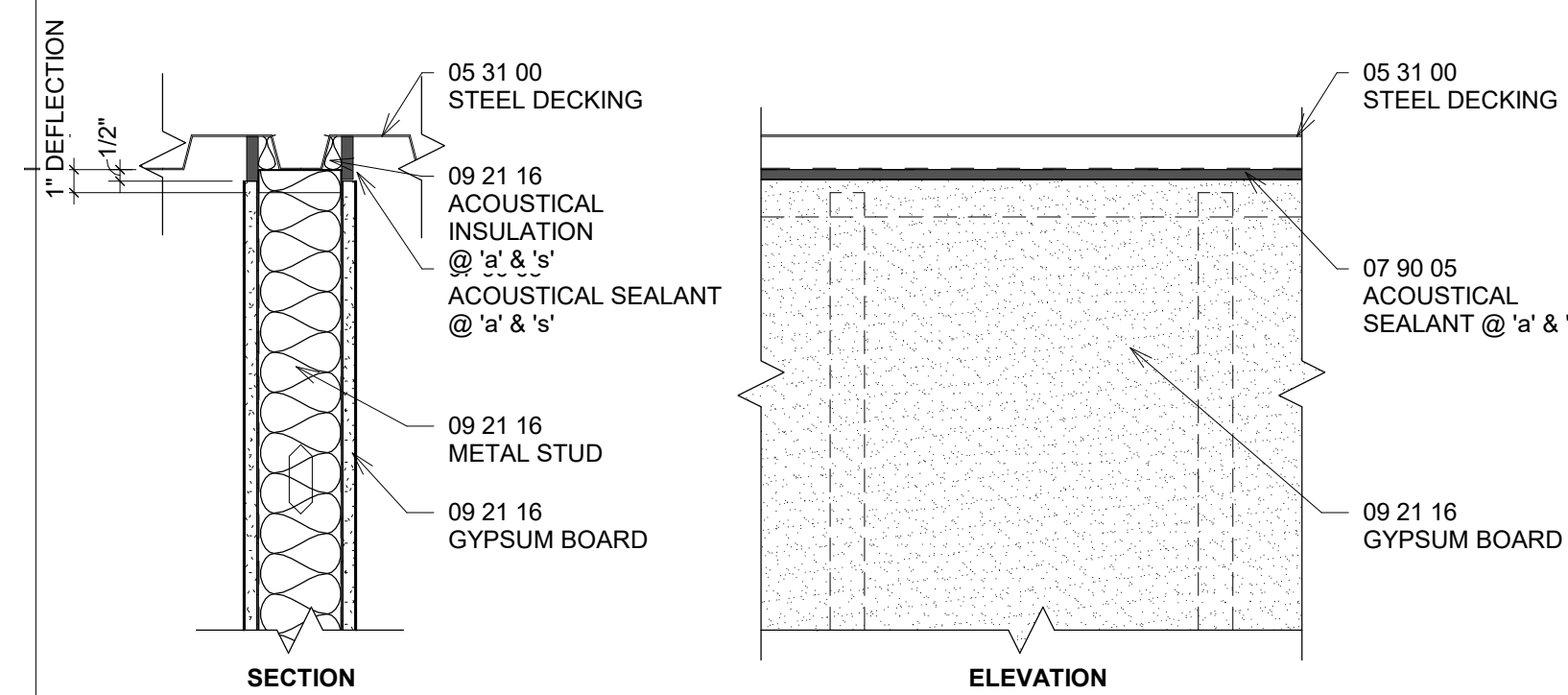
REFERENCE FOR: FIRE-RATED WALLS ACOUSTIC WALLS WALLS TO RESIST THE PASSAGE OF SMOKE



NOTE: JOINT SYSTEM REPRESENTATIVE OF UL ASSEMBLY HW-S-1006

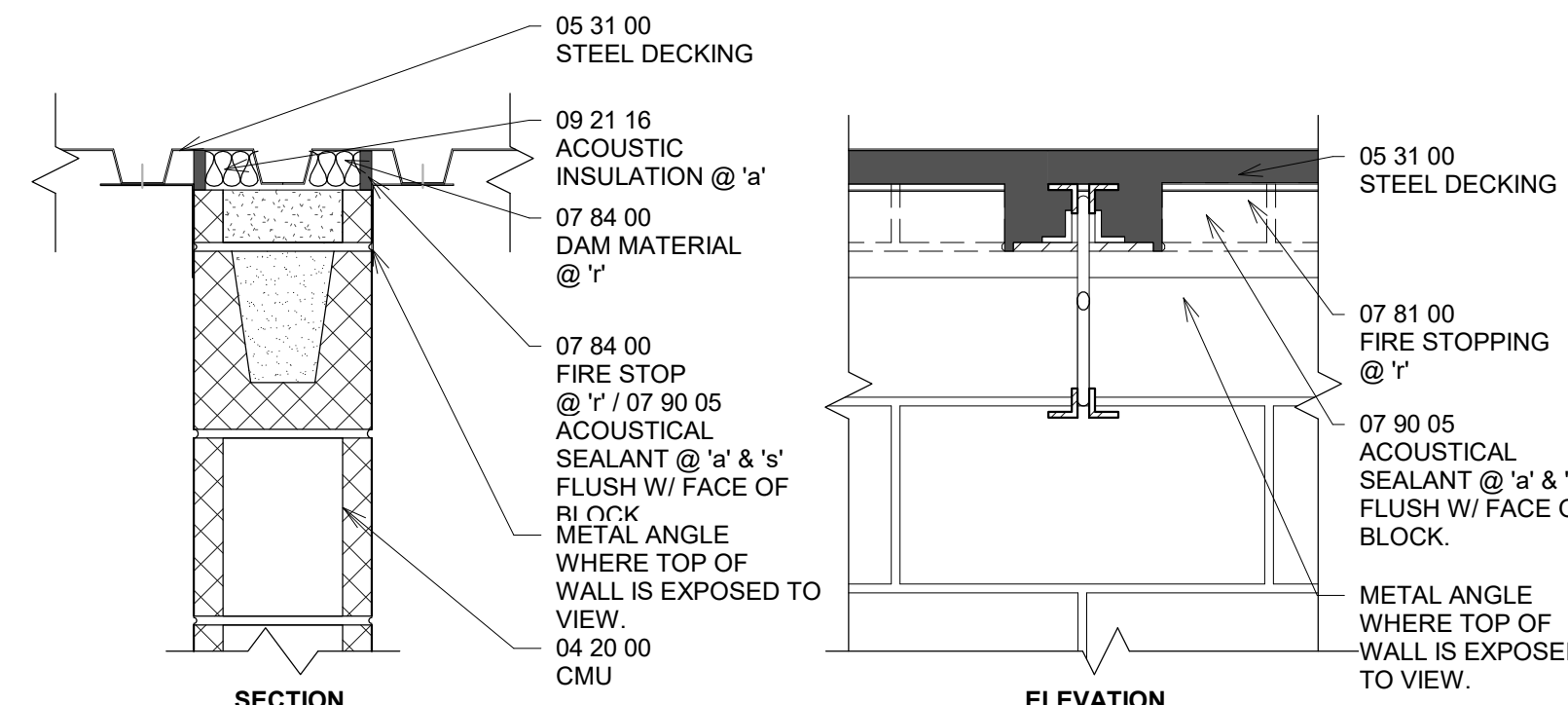
**TOP OF CMU WALLS - BEARING, PERPENDICULAR TO DECK**

REFERENCE FOR: FIRE-RATED WALLS ACOUSTIC WALLS WALLS TO RESIST THE PASSAGE OF SMOKE



REFERENCE FOR: ACOUSTIC WALLS WALLS TO RESIST THE PASSAGE OF SMOKE

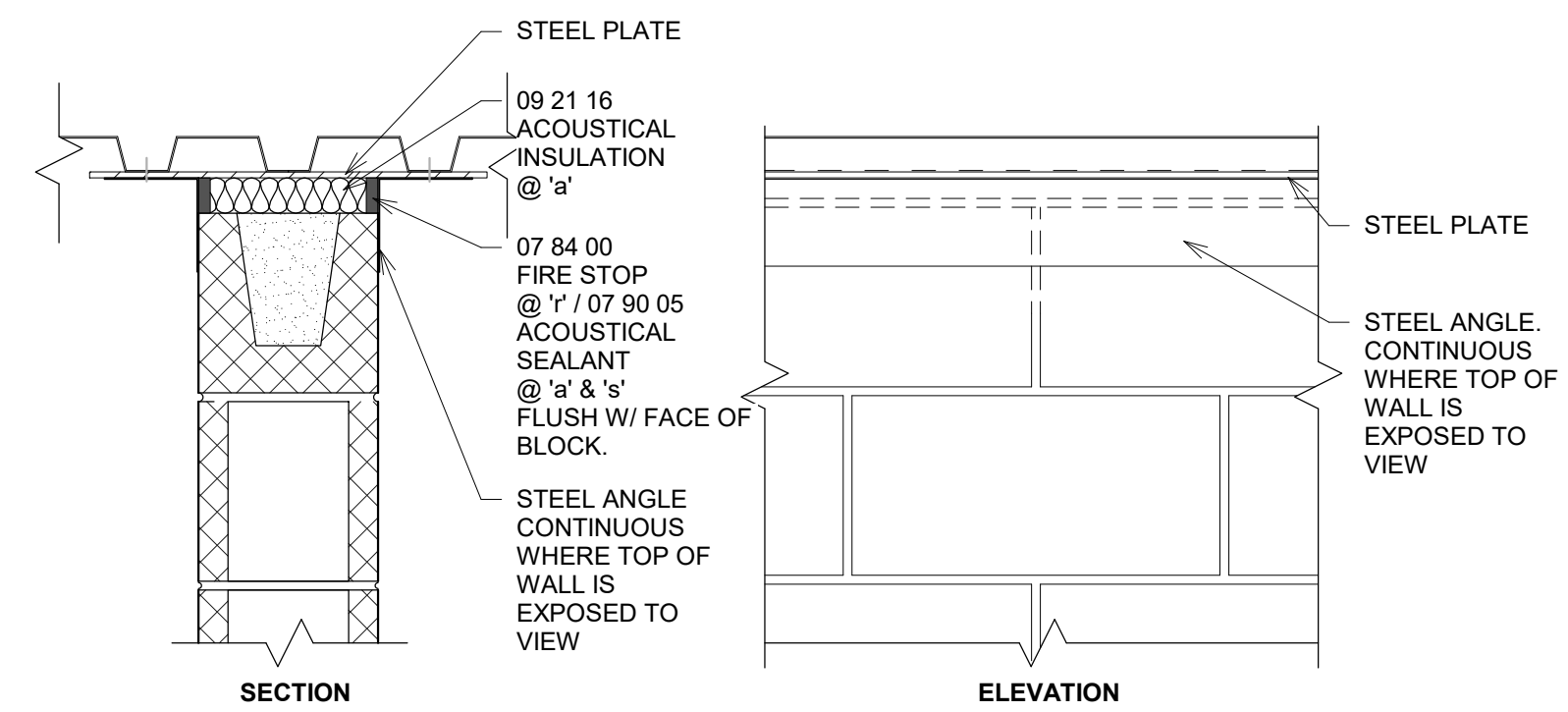
**TOP OF STUD WALLS - NON-BEARING PARALLEL TO DECK**



NOTE: JOINT SYSTEM REPRESENTATIVE OF UL ASSEMBLY HW-S-1006

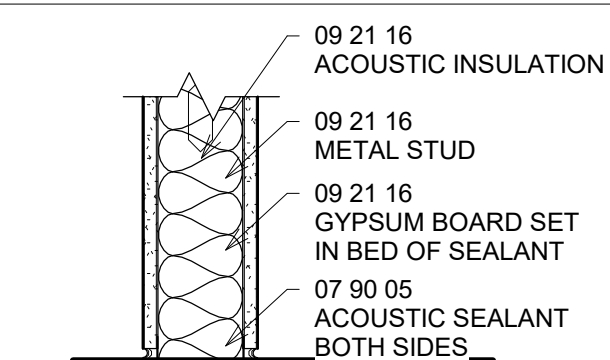
**TOP OF CMU WALL - BEARING, PARALLEL TO DECK @ WALL**

REFERENCE FOR: FIRE-RATED WALLS ACOUSTIC WALLS WALLS TO RESIST THE PASSAGE OF SMOKE

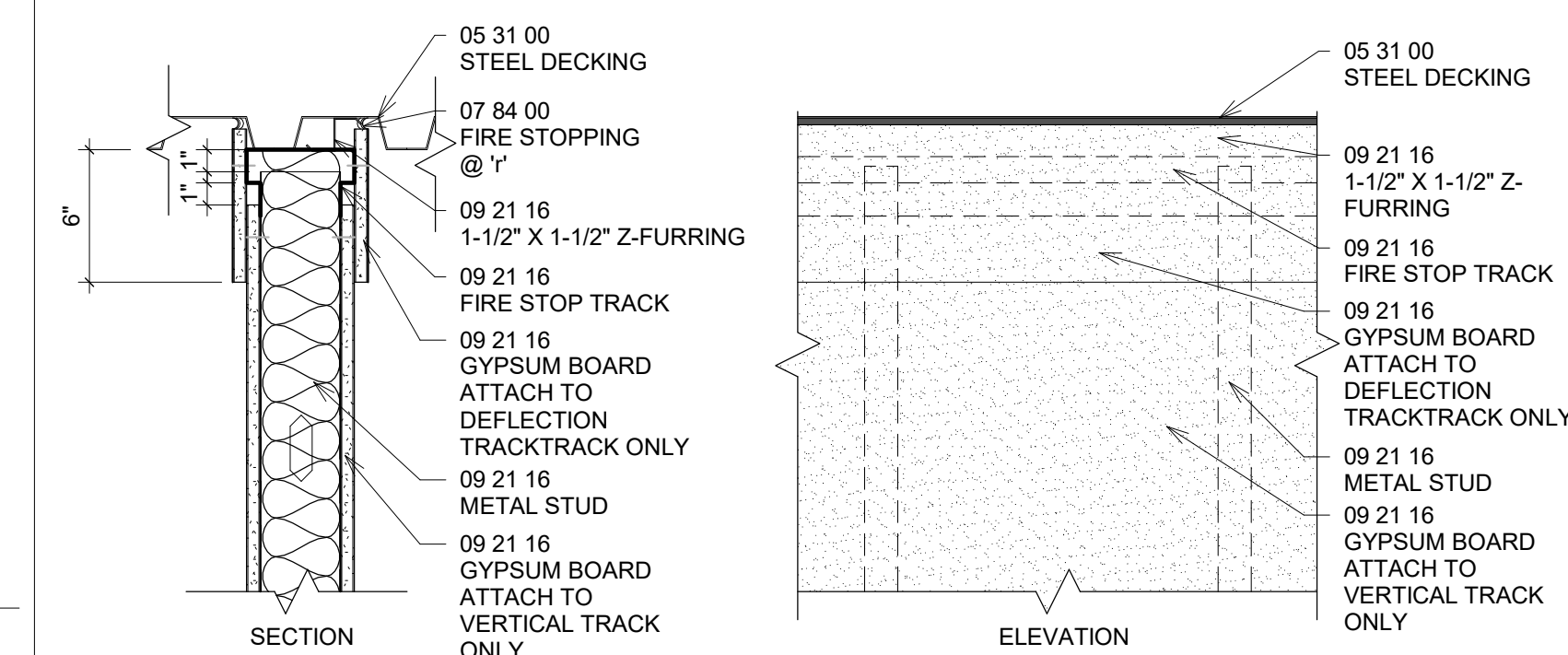


REFERENCE FOR: ACOUSTIC WALLS WALLS TO RESIST THE PASSAGE OF SMOKE

**TOP OF CMU WALLS - NON-BEARING, PARALLEL TO DECK**



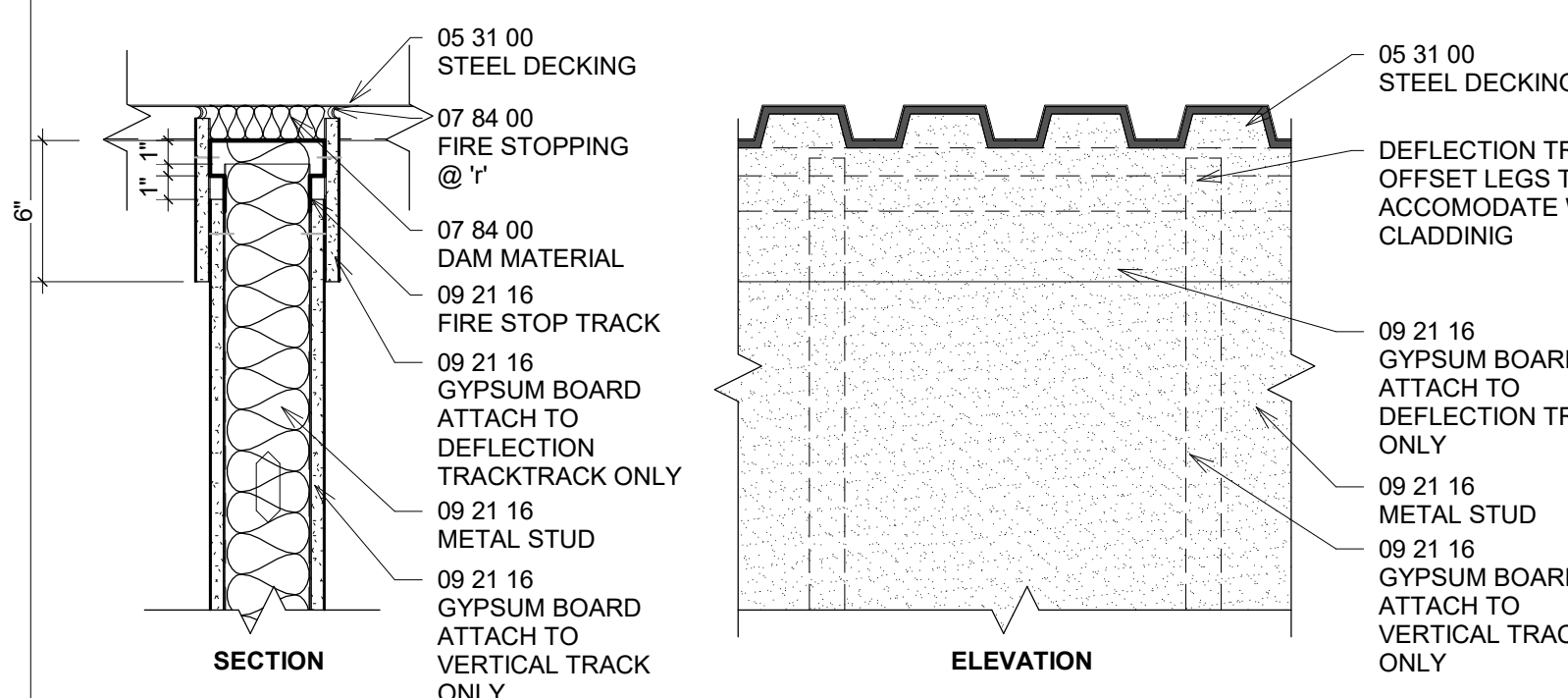
**BOTTOM OF ACOUSTIC FRAME WALL**



NOTE: JOINT SYSTEM REPRESENTATIVE OF UL ASSEMBLY HW-D-0060  
 1" NOMINAL JOINT WIDTH  
 CLASS II & III MOVEMENT CAPABILITIES: 100% COMPRESSION OR EXTENSION

**TOP OF STUD WALLS- NON-BEARING PARALLEL TO DECK FIRE**

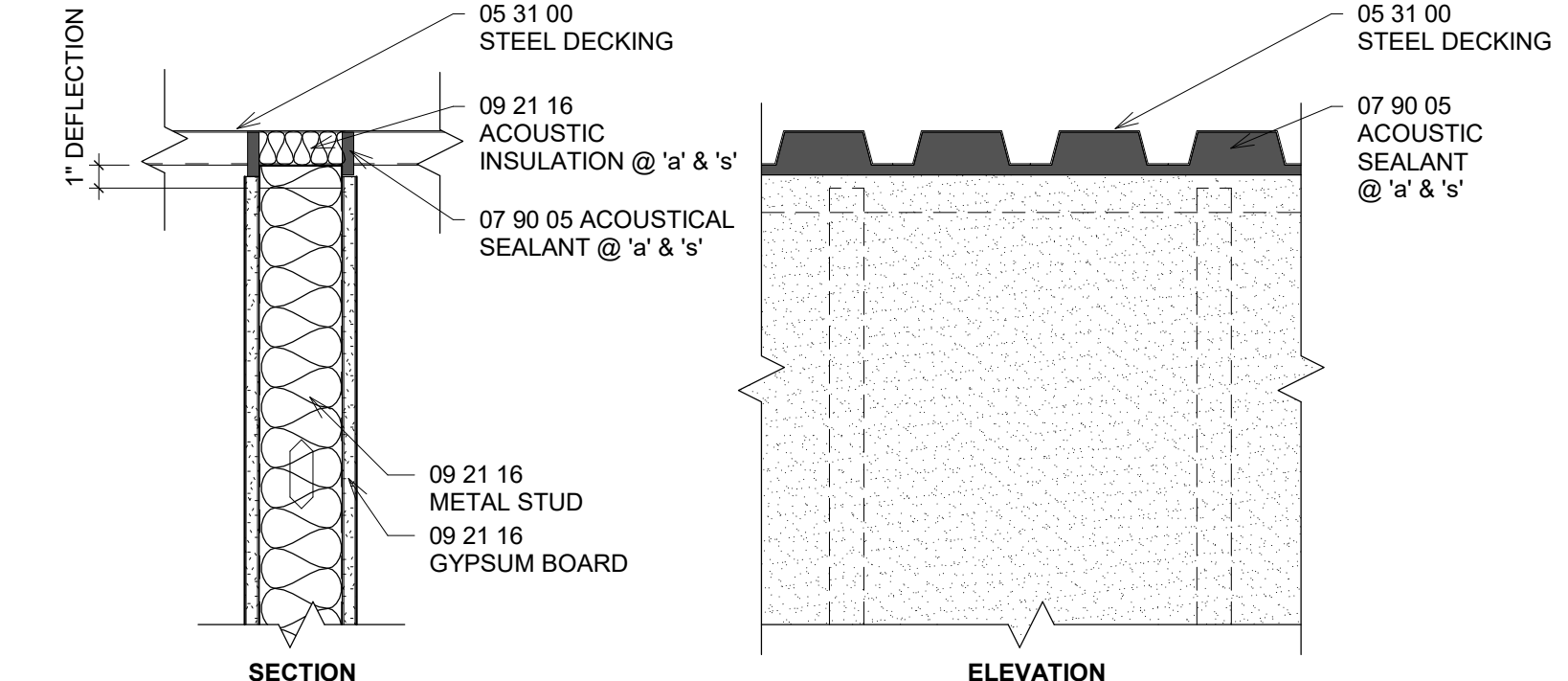
REFERENCE FOR: FIRE-RATED WALLS



NOTE: JOINT SYSTEM REPRESENTATIVE OF UL ASSEMBLY HW-D-0060  
 1" NOMINAL JOINT WIDTH  
 CLASS II & III MOVEMENT CAPABILITIES: 100% COMPRESSION OR EXTENSION

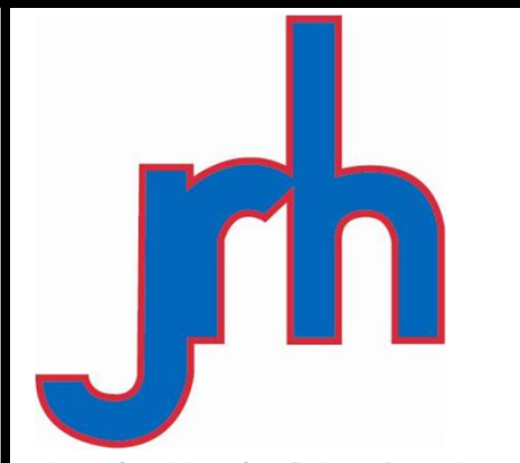
**TOP OF STUD WALL - NON-BEARING, PERPENDICULAR TO DECK FIRE**

REFERENCE FOR: FIRE-RATED WALLS



REFERENCE FOR: ACOUSTIC WALLS WALLS TO RESIST THE PASSAGE OF SMOKE

**TOP OF STUD WALLS - NON-BEARING, PERPENDICULAR TO DECK**



Joseph R. Hewgley & Associates, Inc.  
 702 South Bailey - North Platte, Ne. 69101  
 Phone: 308/534-4983 • Fax: 308/534-4944

**CONSTRUCTION DOCUMENTS**

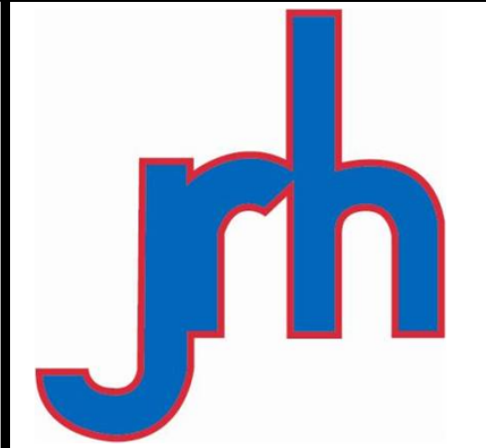
**WORKFORCE TRAINING SPACE**

for  
 CITY OF LEXINGTON, NEBRASKA

PROJECT #: R-0718  
 DATE: 2/22/19  
 DRAWN: RDS

DATE	DESCRIPTION

© 2019 COPYRIGHT JOSEPH R. HEWGLEY & ASSOCIATES, INC.  
 MEMBER AMERICAN INSTITUTE OF ARCHITECTS  
 SHEET A002



Joseph R. Hewgley & Associates, Inc.  
702 South Bailey - North Platte, Ne. 69101  
Phone: 308/534-4983 • Fax: 308/534-4944

**CONSTRUCTION DOCUMENTS**

**WORKFORCE TRAINING SPACE**

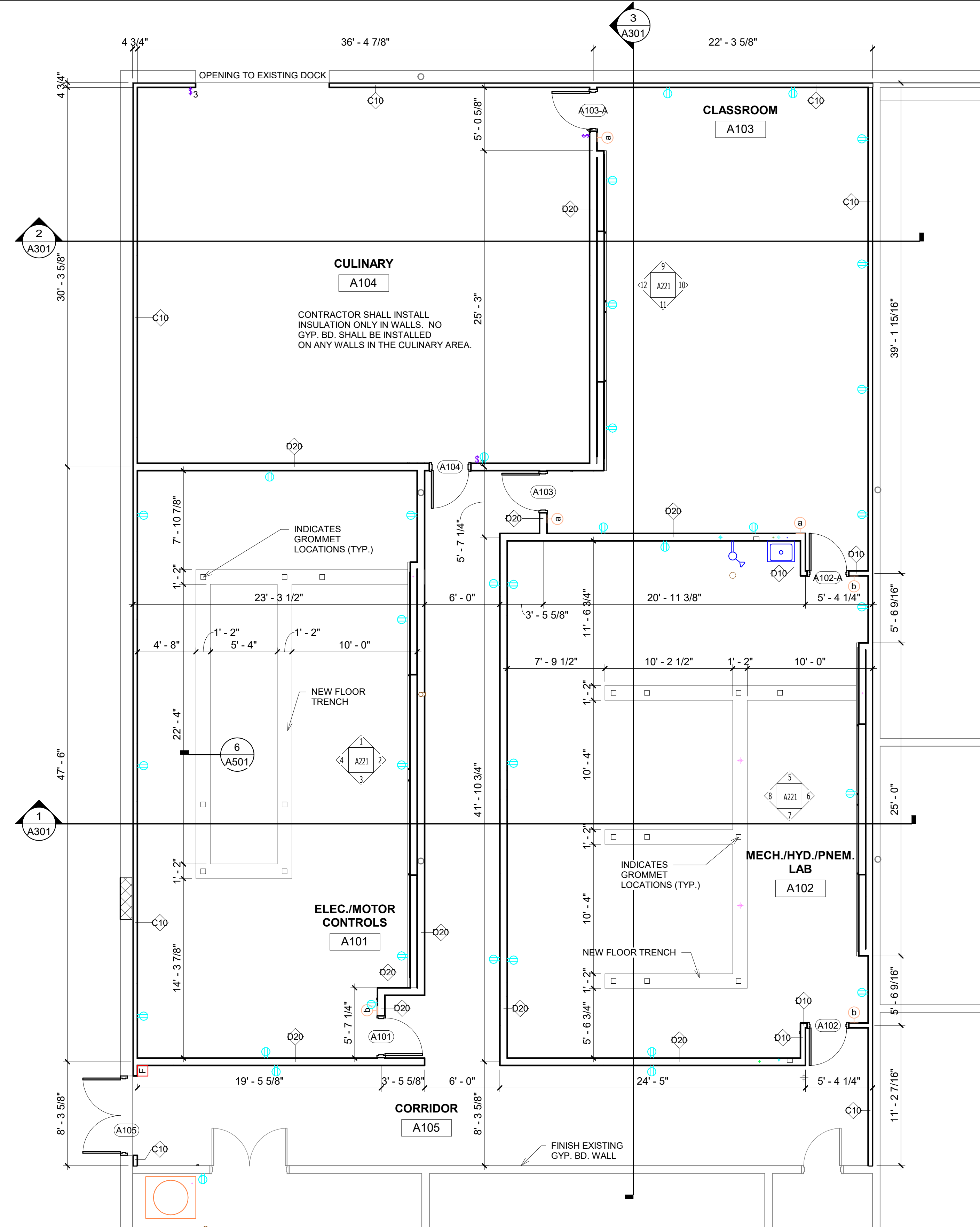
for  
CITY OF LEXINGTON, NEBRASKA

PROJECT #: R-0718  
DATE: 2/22/19  
DRAWN: RDS  
REVISIONS

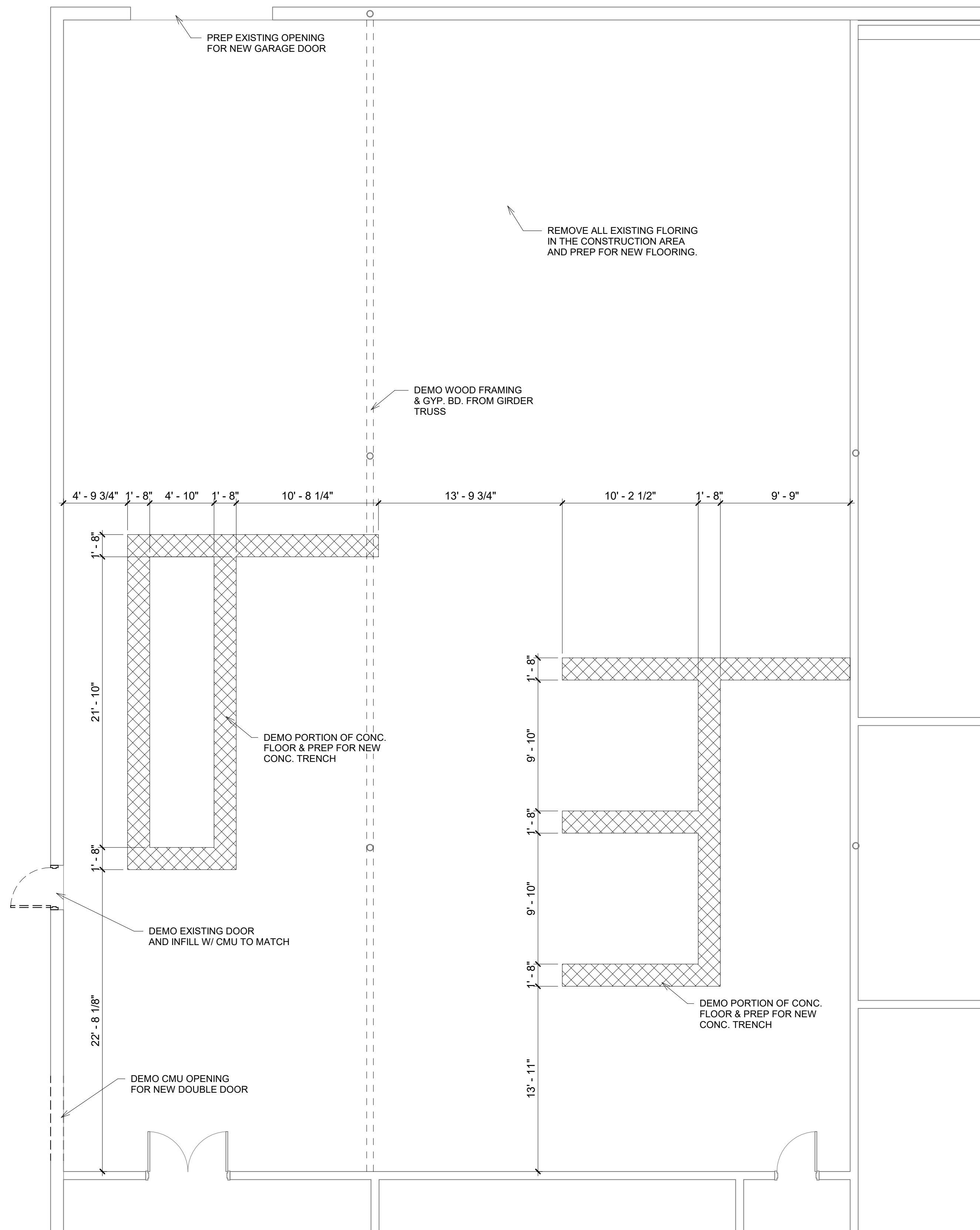
DATE	DESCRIPTION

© 2019 COPYRIGHT  
JOSEPH R. HEWGLEY &  
ASSOCIATES, Inc.  
MEMBER  
AMERICAN  
INSTITUTE  
of ARCHITECTS

SHEET  
**A101**

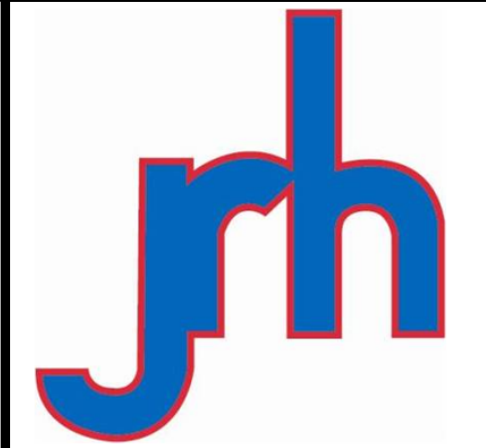


**1 LEVEL 1 PLAN**  
3/16" = 1'-0"



**2 LEVEL 1 DEMO PLAN**  
3/16" = 1'-0"

Room Finish Schedule								
Number	Name	Floor Finish	Base Finish	Wall Finish - North	Wall Finish - East	Wall Finish - South	Wall Finish - West	Comments
A101	ELEC./MOTOR CONTROLS	HPC-1/RB--1	VB-1	P-1/P4	P-1/P-2/P-3/MWP	P-1/P-4	P-1/P-4	TRENCH COVERS RECIEVE RB-1 ONLY
A102	MECH./HYD./PNEM. LAB	HPC-1/RB--1	VB-1	P-1/P4	P-1/P-2/P-3/MWP	P-1/P-4	P-1/P-4	TRENCH COVERS RECIEVE RB-1 ONLY
A103	CLASSROOM	LVT-1	VB-1	P-1	P-1	P-1	P-1/P-2/P-3/MWP	
A104	CULINARY	EXISTING CONC.	NONE	NONE	NONE	NONE	NONE	NO GYP. BD. ON ANY WALLS
A105	CORRIDOR	VCT-1	VB-1	P-1	P-1	P-1	P-1	



Joseph R. Hewgley & Associates, Inc.  
702 South Bailey - North Platte, Ne. 69101  
Phone: 308/534-4983 • Fax: 308/534-4044

CONSTRUCTION DOCUMENTS

WORKFORCE TRAINING SPACE

for  
CITY OF LEXINGTON, NEBRASKA

PROJECT #: R-0718

DATE: 2/22/19

DRAWN: RDS

REVISIONS

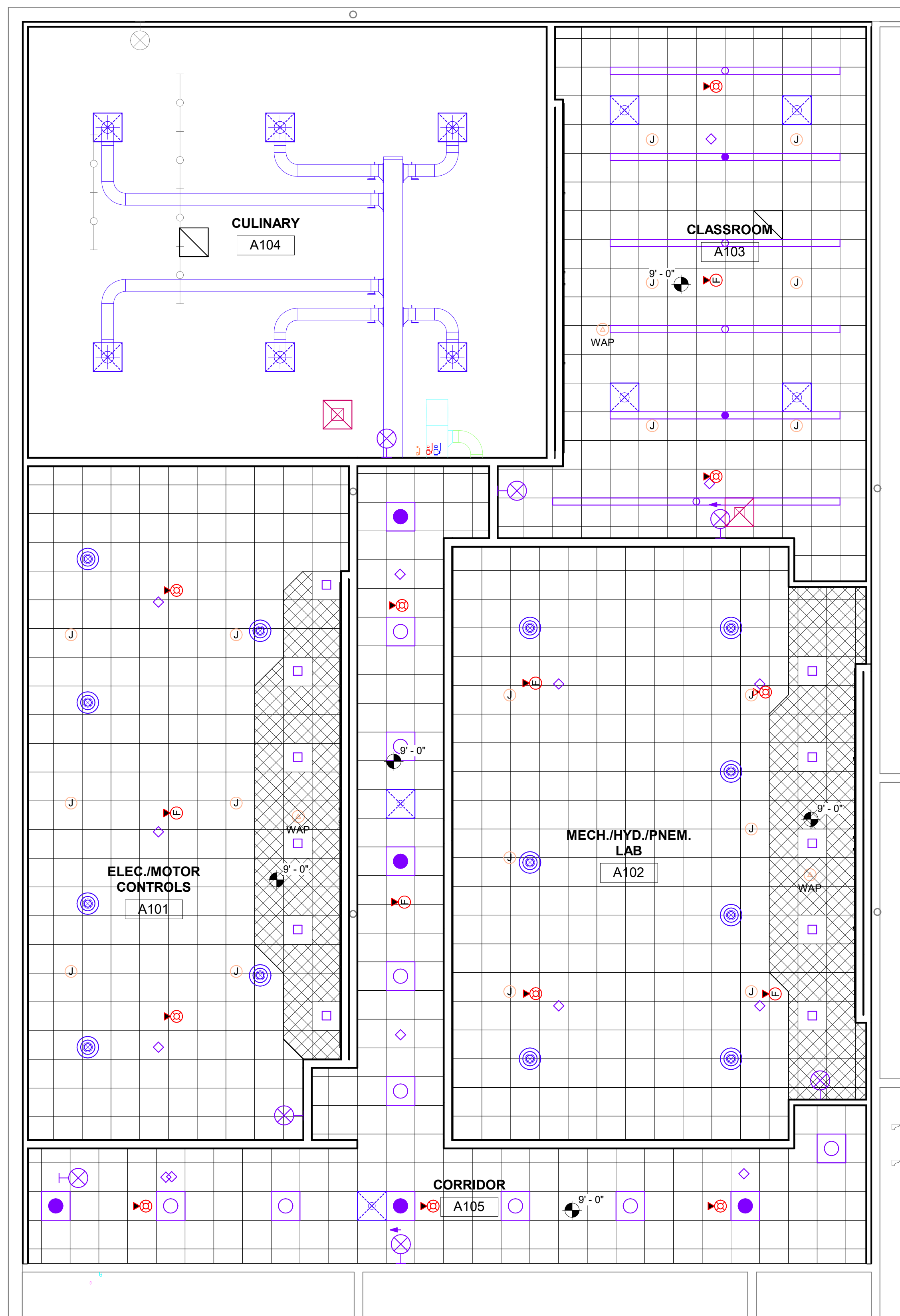
DATE	DESCRIPTION

© 2019 COPYRIGHT  
JOSEPH R. HEWGLEY &  
ASSOCIATES, Inc.






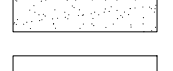
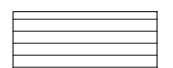
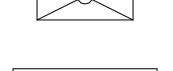
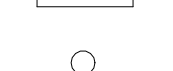



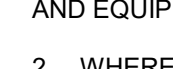
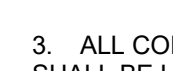

MEMBER  
AMERICAN  
INSTITUTE  
of ARCHITECTS

SHEET  
A141



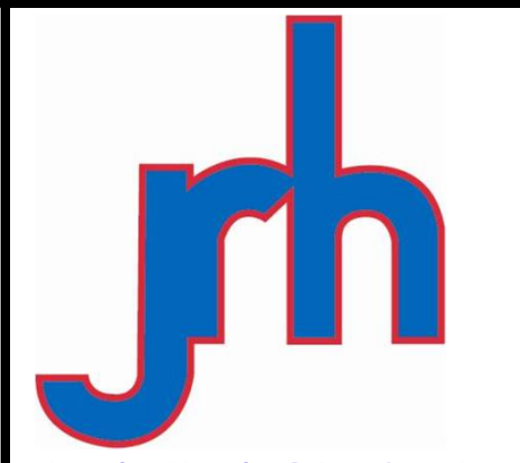
1 LEVEL 1 PLAN  
3/16" = 1'-0"

CEILING LEGEND

-  ACOUSTICAL CEILING 2 X 2 GRID
-  ACOUSTICAL CEILING 2 X 2 GRID W/ PERF. METAL PANELS
-  VINYL FACED ACOUSTICAL CEILING
-  GYP BD CEILING
-  EXPOSED PAINTED CEILING
-  METAL SOFFIT PANEL
-  2x4 TROFFER FIXTURE
-  LINEAR PENDANT FIXTURE
-  WALL MOUNTED LINEAR FIXTURE
-  RECESSED FIXTURE
-  SA DIFFUSER
-  RA DIFFUSER
-  OCCUPANCY SENSOR

GENERAL NOTES:

1. CENTER CEILING GRIDS IN ROOMS U.N.O. CENTER FIXTURES AND EQUIPMENT IN GRIDS OR METAL SOFFIT PANEL FLUTES.
2. WHERE GYP BD SOFFITS / BULKHEADS ALIGN WITH CMU WALLS WITH BULL-NOSED CORNERS SET FACE OF GYP BD BACK 1".
3. ALL CONDUIT TO DECK MOUNTED FIXTURES (NO CEILING) SHALL BE LOCATED ABOVE ROOF DECK BELOW INSULATION (RUN CONDUIT IN DECK FLUTES WHERE POSSIBLE).
4. PAINT EXPOSED STRUCTURE, DUCT WORK, PIPING, AND CONDUIT IN OCCUPIED SPACES.
5. PAINT ALL CUH DIFFUSERS. ARCHITECT TO SPECIFY COLOR.



Joseph R. Hewgley & Associates, Inc.  
702 South Bailey - North Platte, Ne. 69101  
Phone: 308/534-4983 • Fax: 308/534-4944

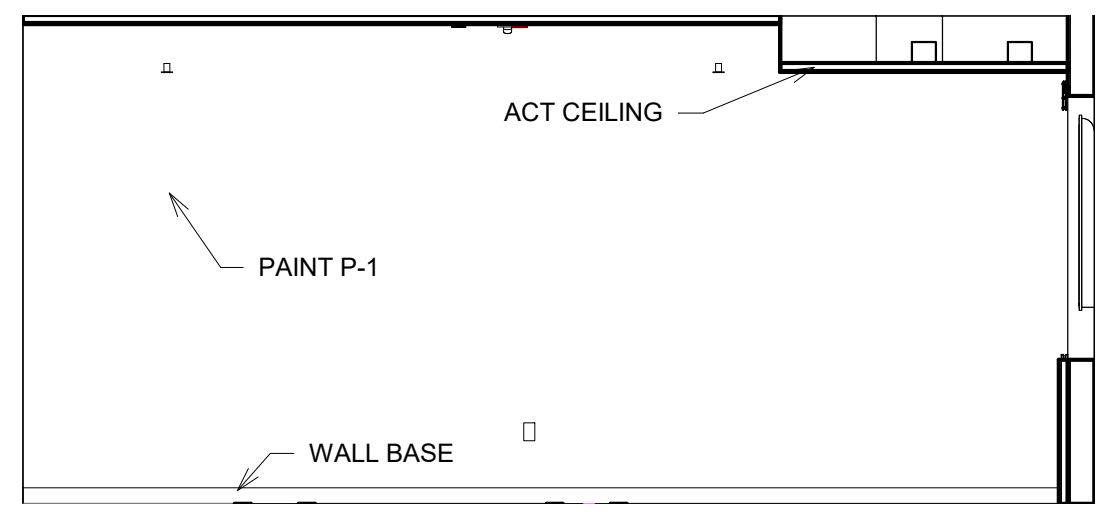
**CONSTRUCTION DOCUMENTS**

**WORKFORCE TRAINING SPACE**  
for  
CITY OF LEXINGTON, NEBRASKA

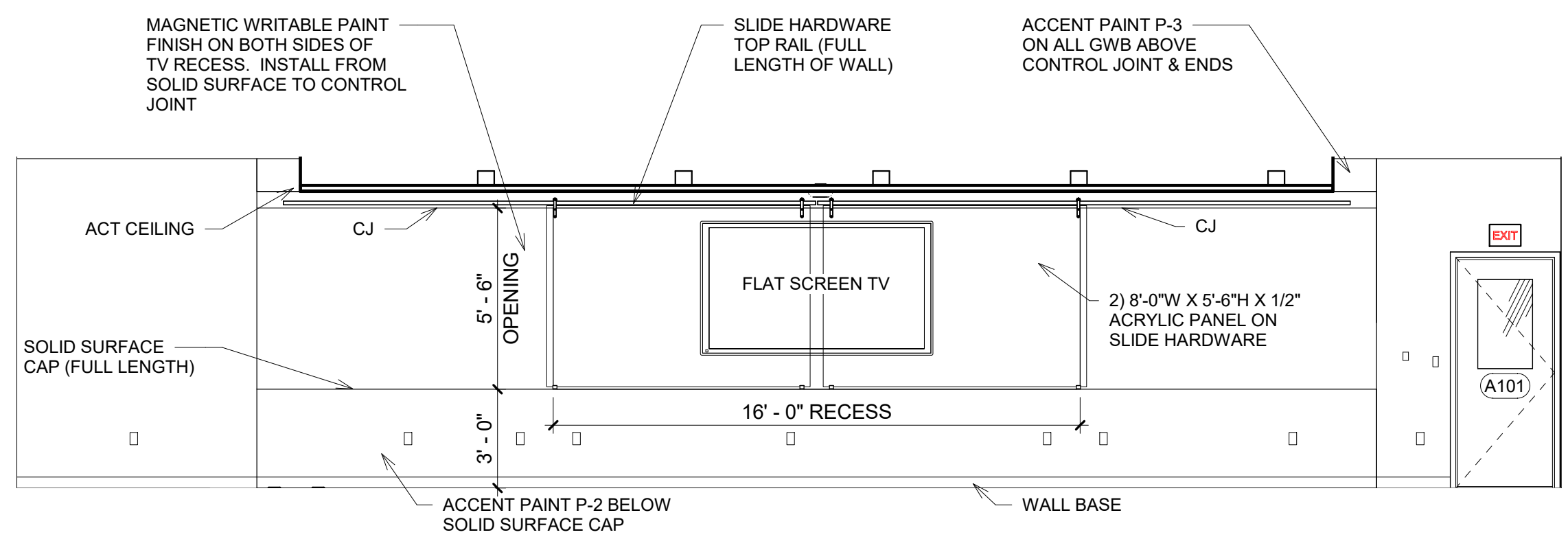
PROJECT #: R-0718  
DATE: 2/22/19  
DRAWN: RDS  
REVISIONS

DATE	DESCRIPTION

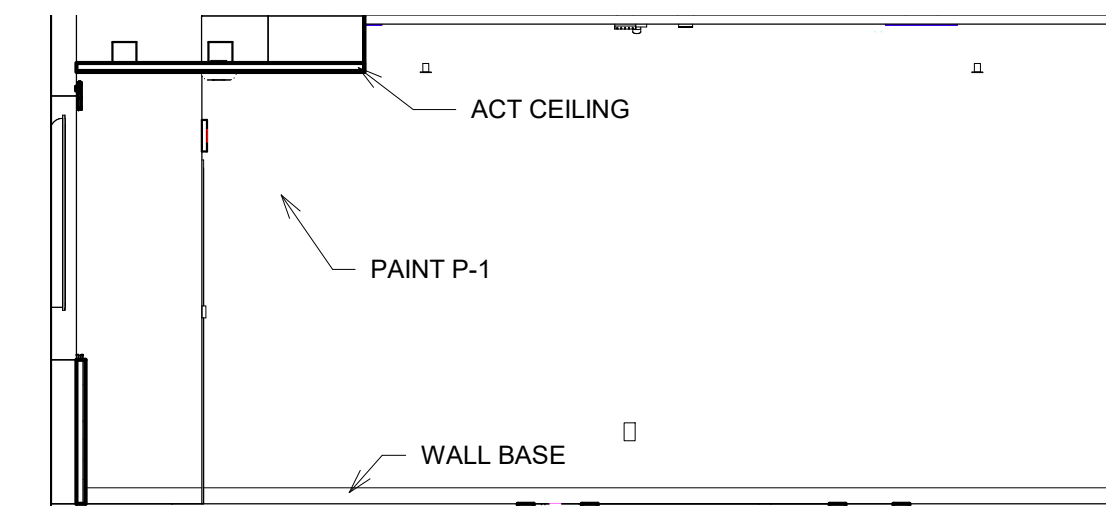
© 2019 COPYRIGHT  
JOSEPH R. HEWGLEY &  
ASSOCIATES, INC.  
MEMBER  
AMERICAN  
INSTITUTE  
of ARCHITECTS  
SHEET  
**A221**



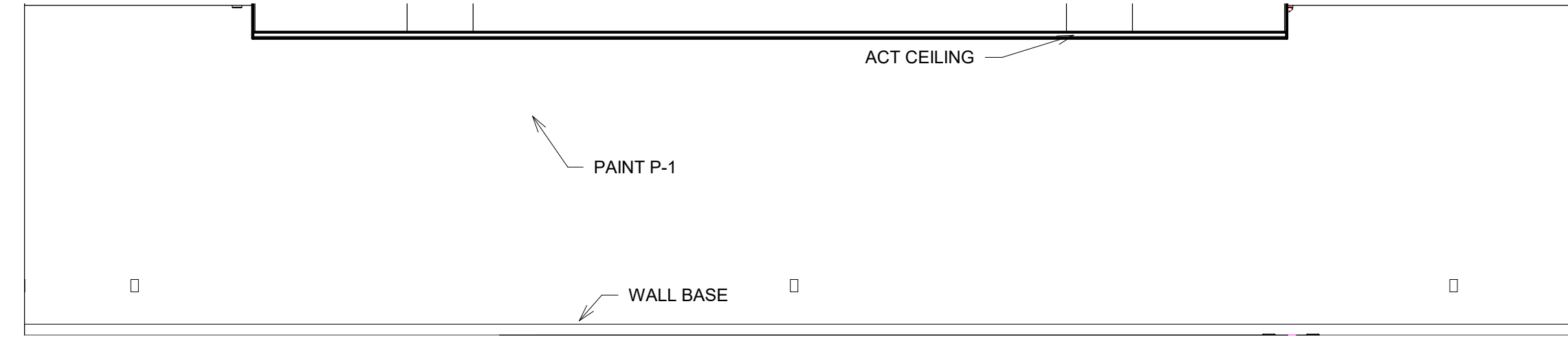
**1 MOTOR CONTROLS A101 (ELEV. A)**  
1/4" = 1'-0"



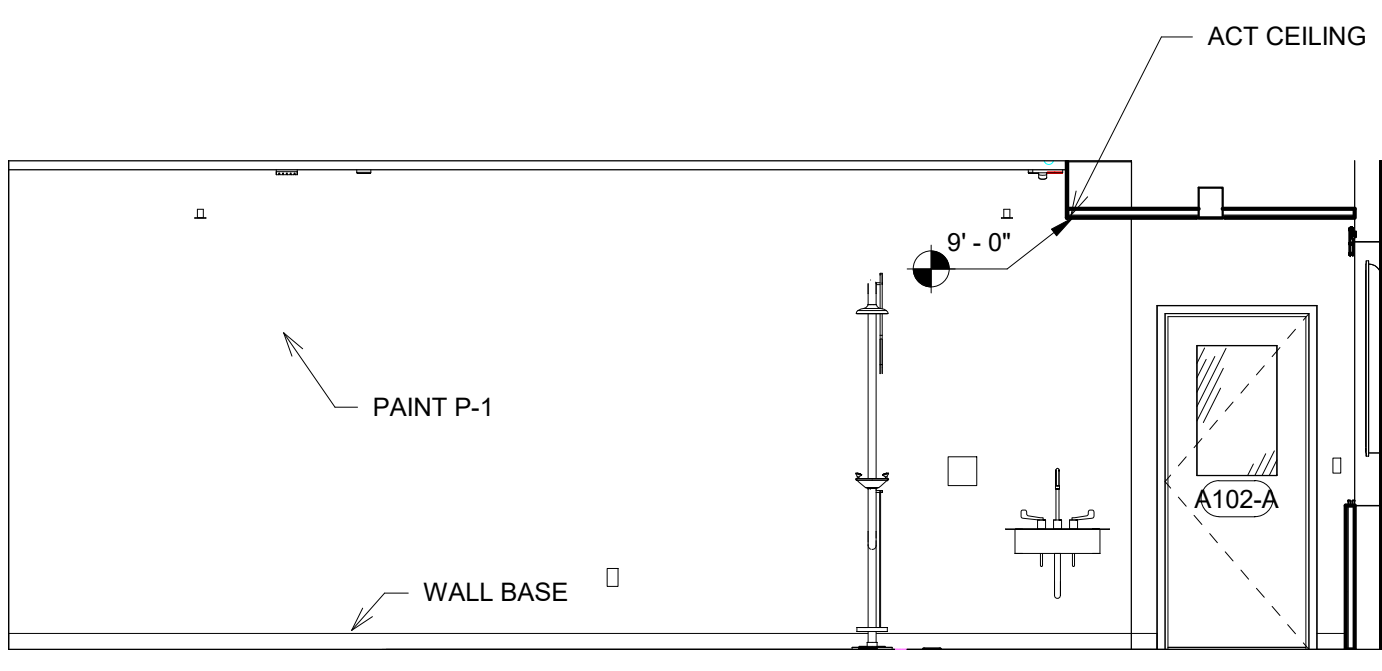
**2 MOTOR CONTROLS A101 (ELEV. B)**  
1/4" = 1'-0"



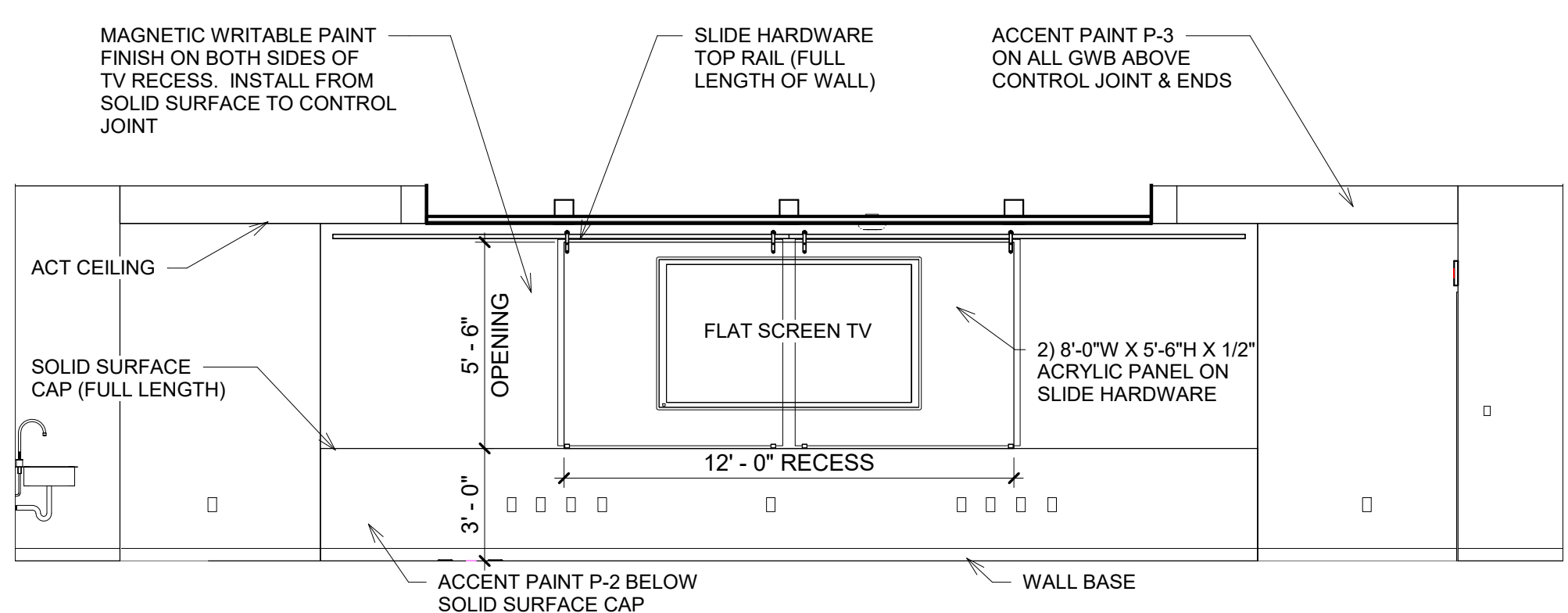
**3 MOTOR CONTROLS A101 (ELEV. C)**  
1/4" = 1'-0"



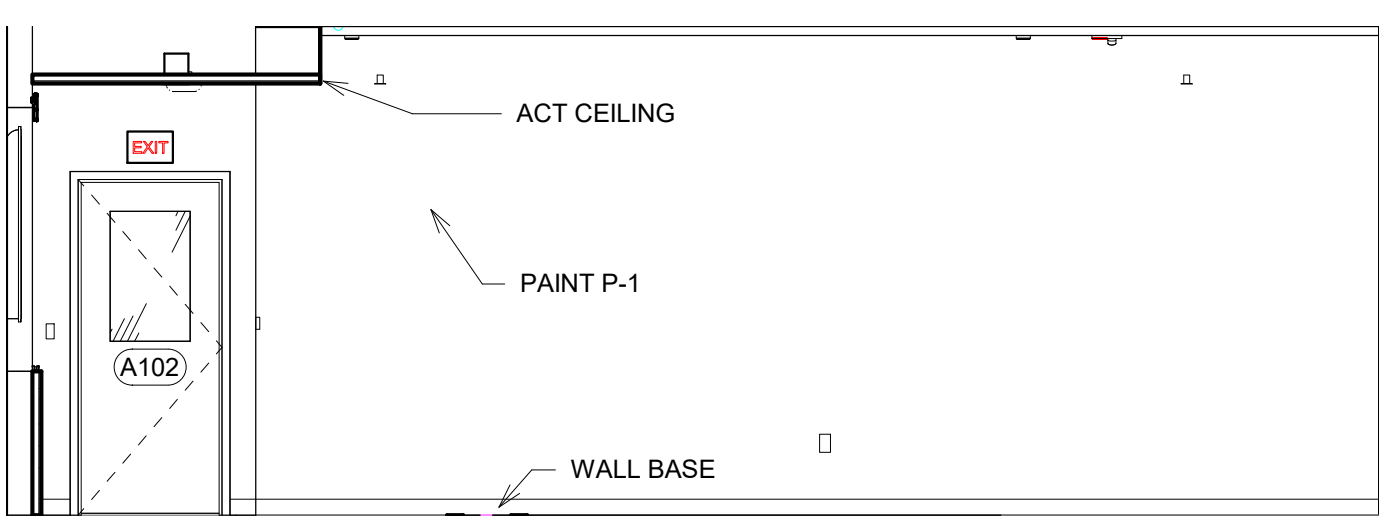
**4 MOTOR CONTROLS A101 (ELEV. D)**  
1/4" = 1'-0"



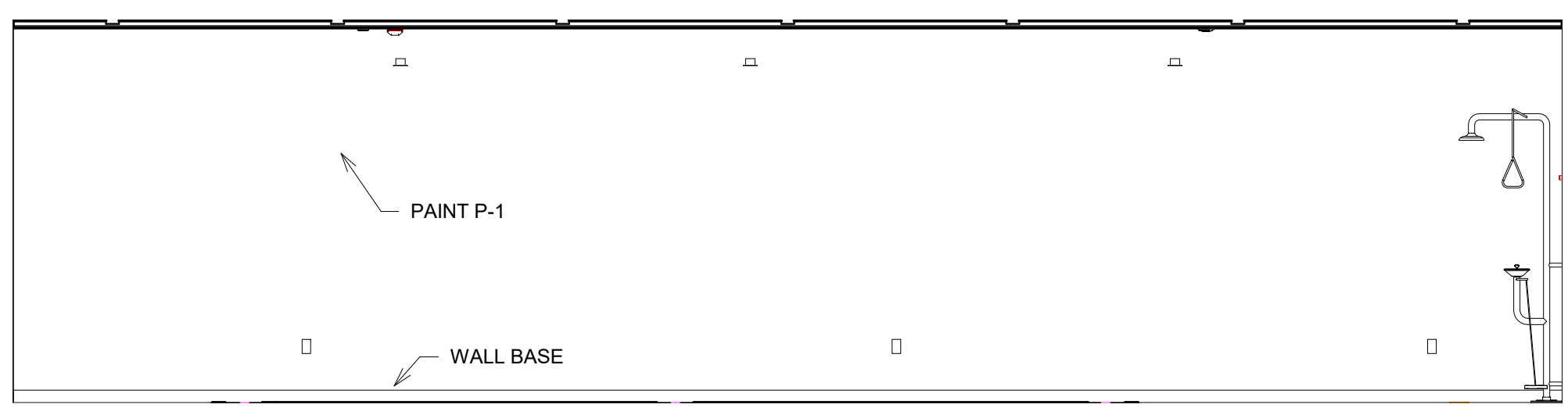
**5 MECH. LAB A102 (ELEV. A)**  
1/4" = 1'-0"



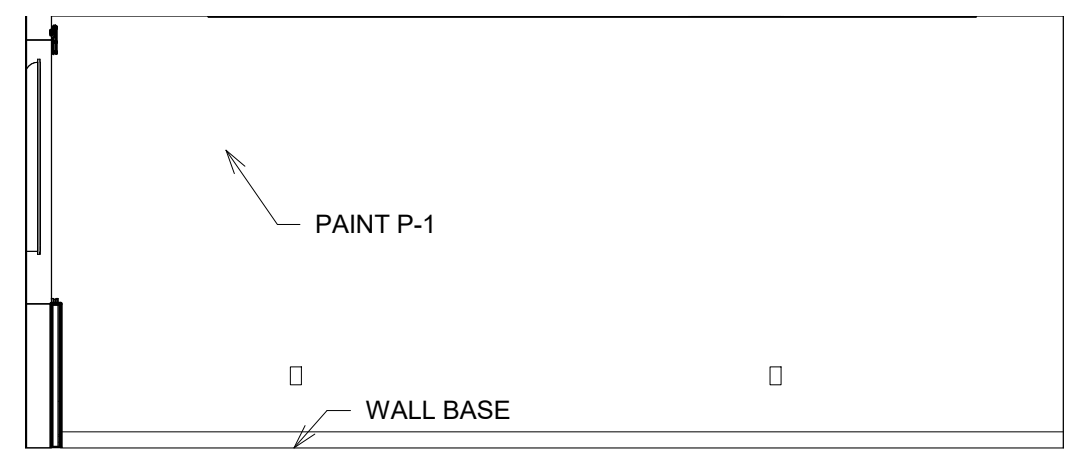
**6 MECH. LAB A102 (ELEV. B)**  
1/4" = 1'-0"



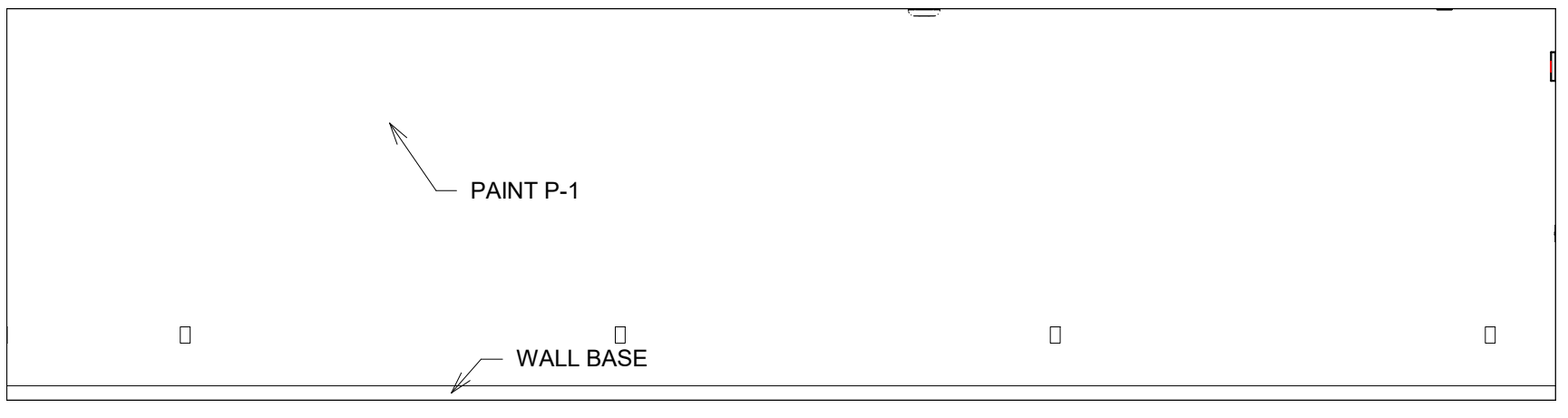
**7 MECH. LAB A102 (ELEV. C)**  
1/4" = 1'-0"



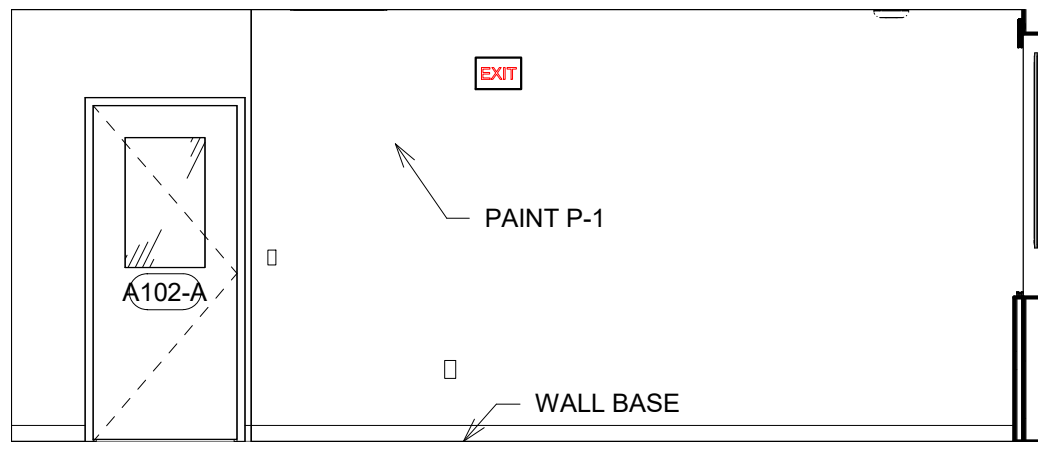
**8 MECH. LAB A102 (ELEV. D)**  
1/4" = 1'-0"



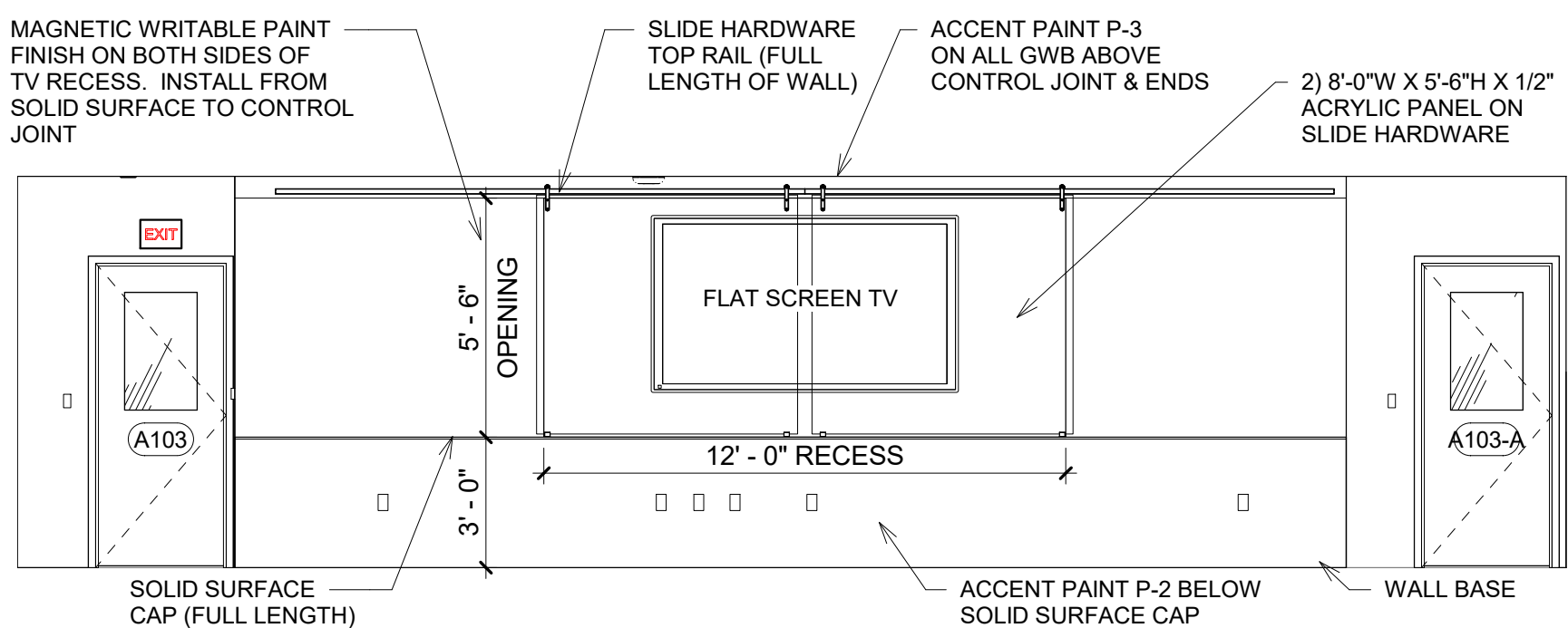
**9 CLASSROOM A103 (ELEV. A)**  
1/4" = 1'-0"



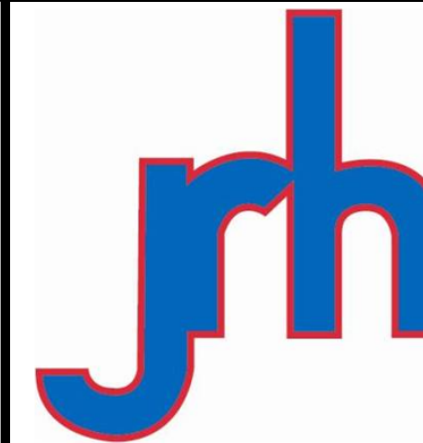
**10 CLASSROOM A103 (ELEV. B)**  
1/4" = 1'-0"



**11 CLASSROOM A103 (ELEV. C)**  
1/4" = 1'-0"



**12 CLASSROOM A103 (ELEV. D)**  
1/4" = 1'-0"



Joseph R. Hewgley & Associates, Inc.  
702 South Bailey - North Platte, Ne. 69101  
Phone: 308/534-4983 • Fax: 308/534-4944

CONSTRUCTION  
DOCUMENTS

**WORKFORCE TRAINING SPACE**

for  
CITY OF LEXINGTON, NEBRASKA

PROJECT #: R-0718

DATE: 2/22/19

DRAWN: RDS

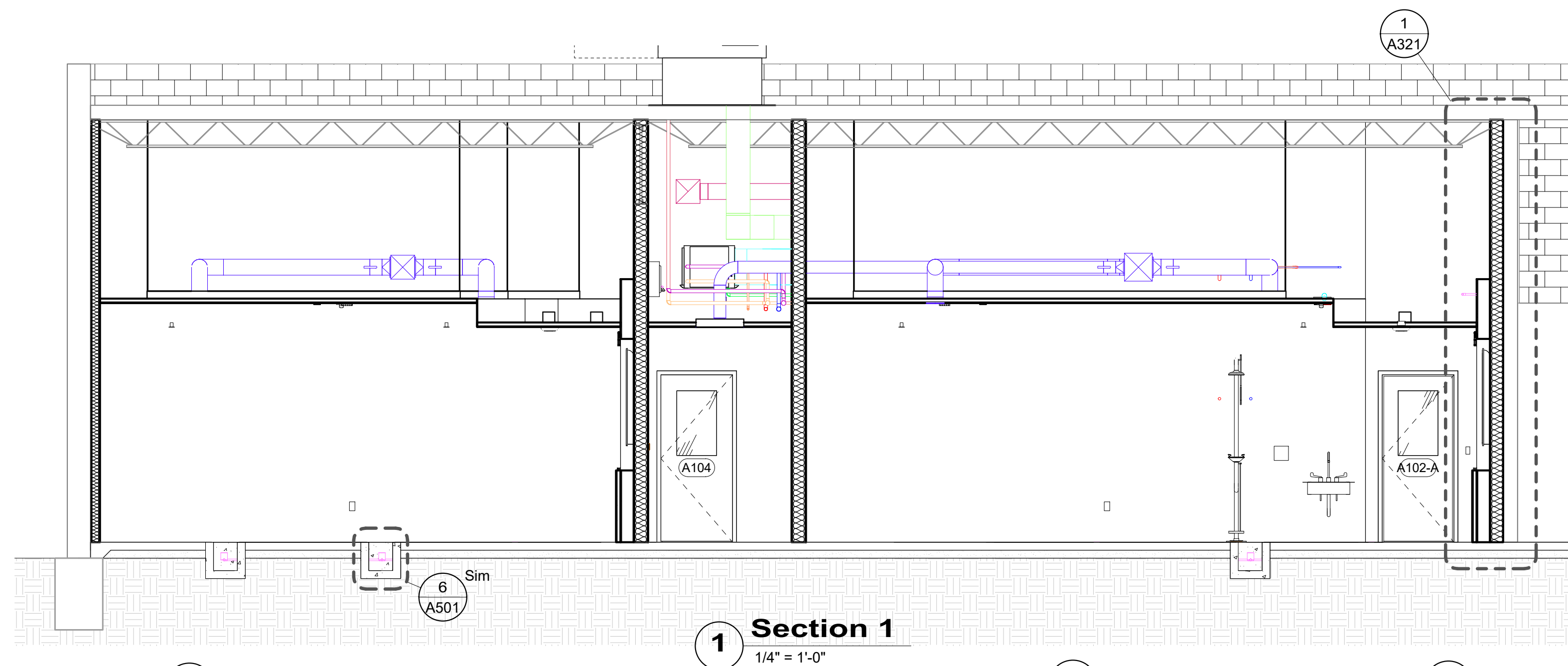
REVISIONS

DATE	DESCRIPTION

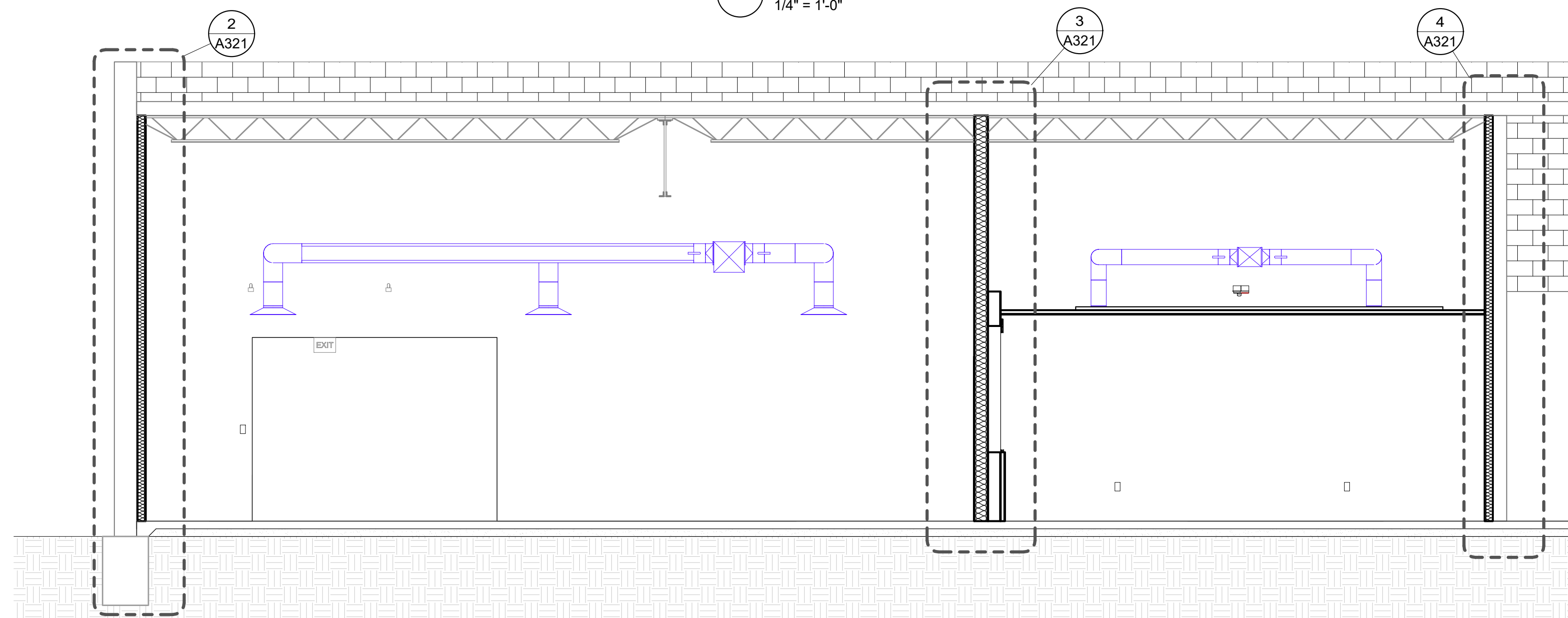
© 2019 COPYRIGHT  
JOSEPH R. HEWGLEY &  
ASSOCIATES, Inc.



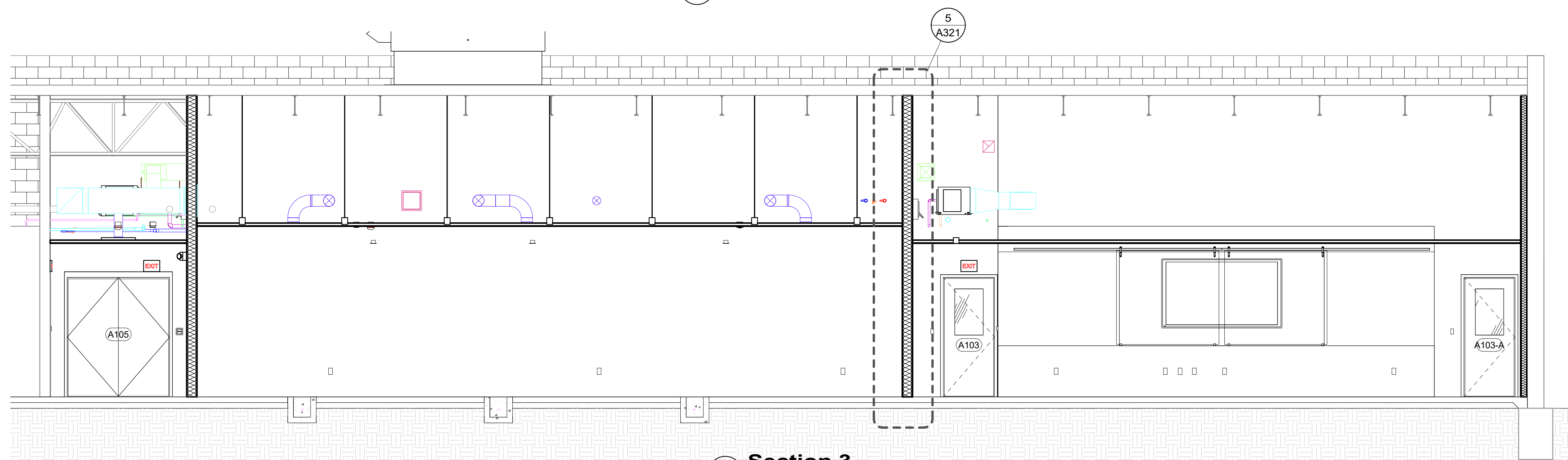
MEMBER  
AMERICAN  
INSTITUTE  
of ARCHITECTS  
SHEET  
**A301**



**1 Section 1**  
1/4" = 1'-0"



**2 Section 2**  
1/4" = 1'-0"



**3 Section 3**  
1/4" = 1'-0"



Joseph R. Hewgley & Associates, Inc.  
702 South Bailey - North Platte, Ne. 69101  
Phone: 308/534-4983 • Fax: 308/534-4944

**CONSTRUCTION DOCUMENTS**

**WORKFORCE TRAINING SPACE**

for  
CITY OF LEXINGTON, NEBRASKA

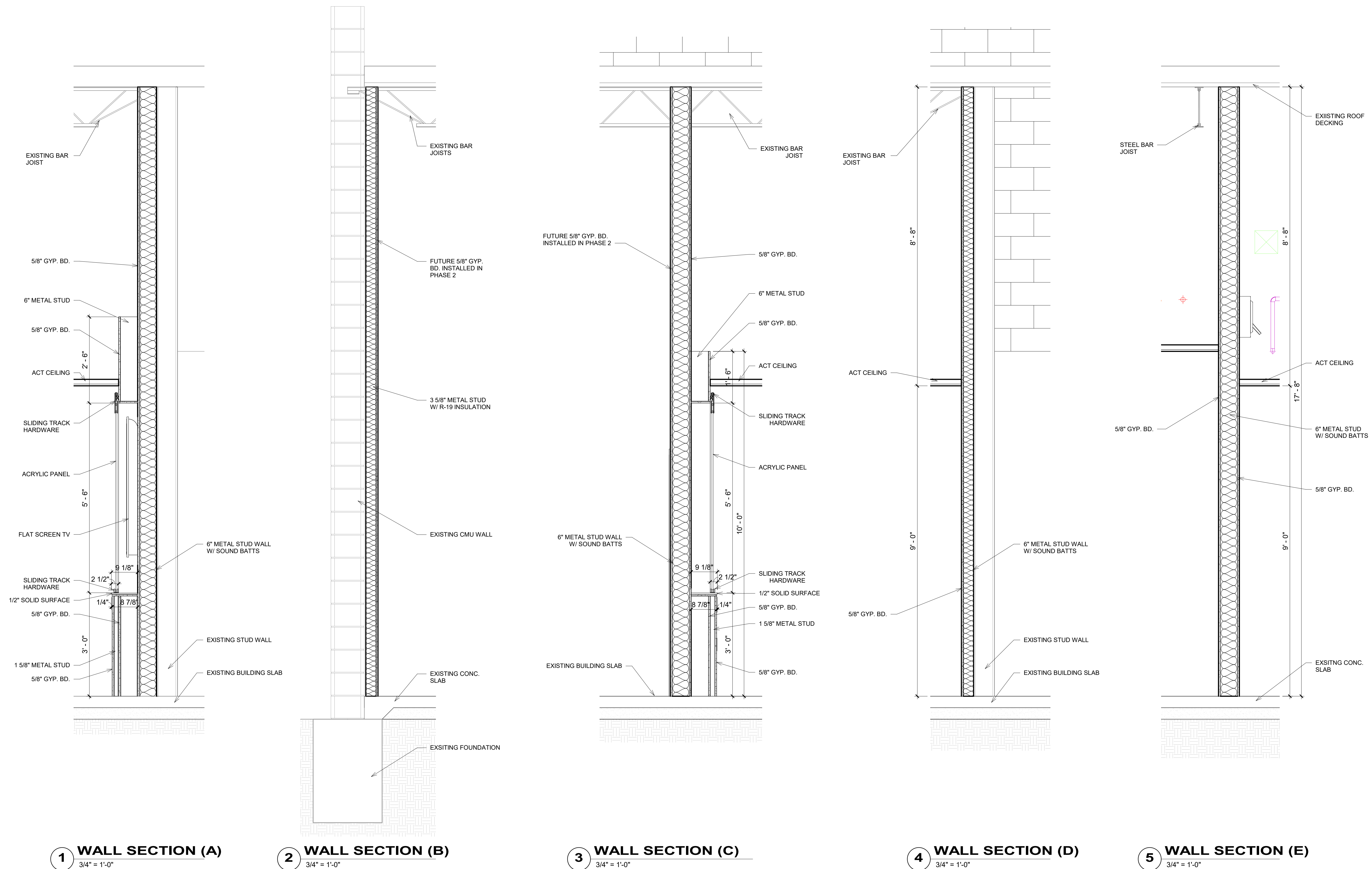
PROJECT #: R-0718  
DATE: 2/22/19  
DRAWN: RDS

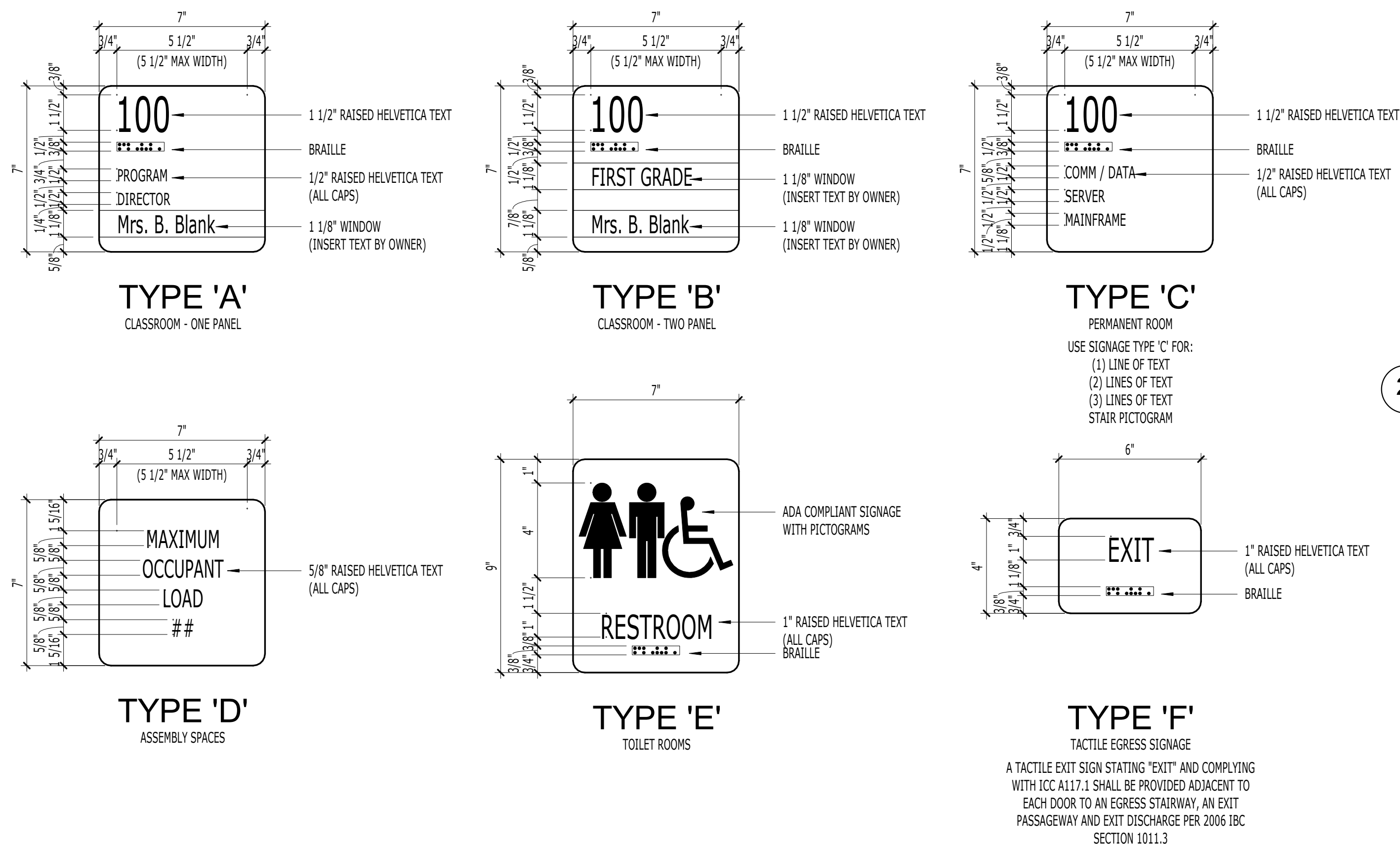
**REVISIONS**

DATE	DESCRIPTION

© 2019 COPYRIGHT  
JOSEPH R. HEWGLEY &  
ASSOCIATES, INC.  
MEMBER  
AMERICAN  
INSTITUTE  
of ARCHITECTS

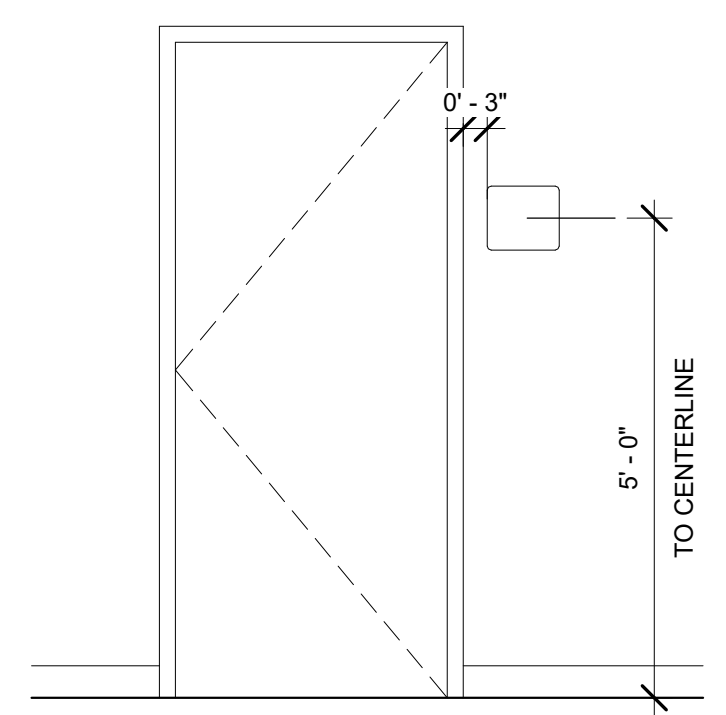
SHEET  
**A321**



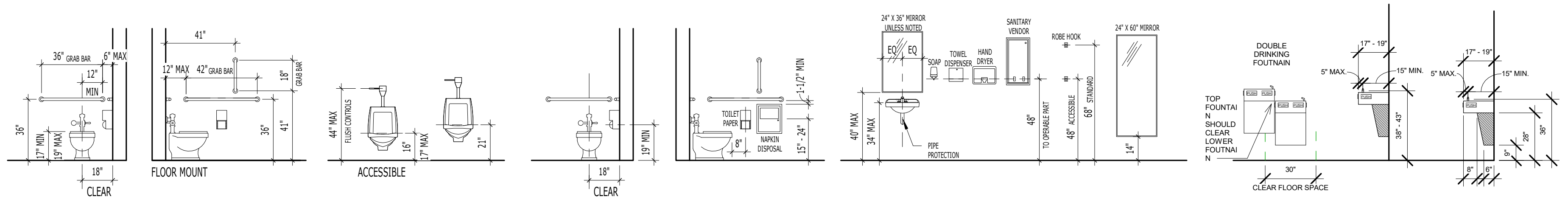


**2 SIGNAGE MOUNTING HEIGHTS**  
1/2" = 1'-0"

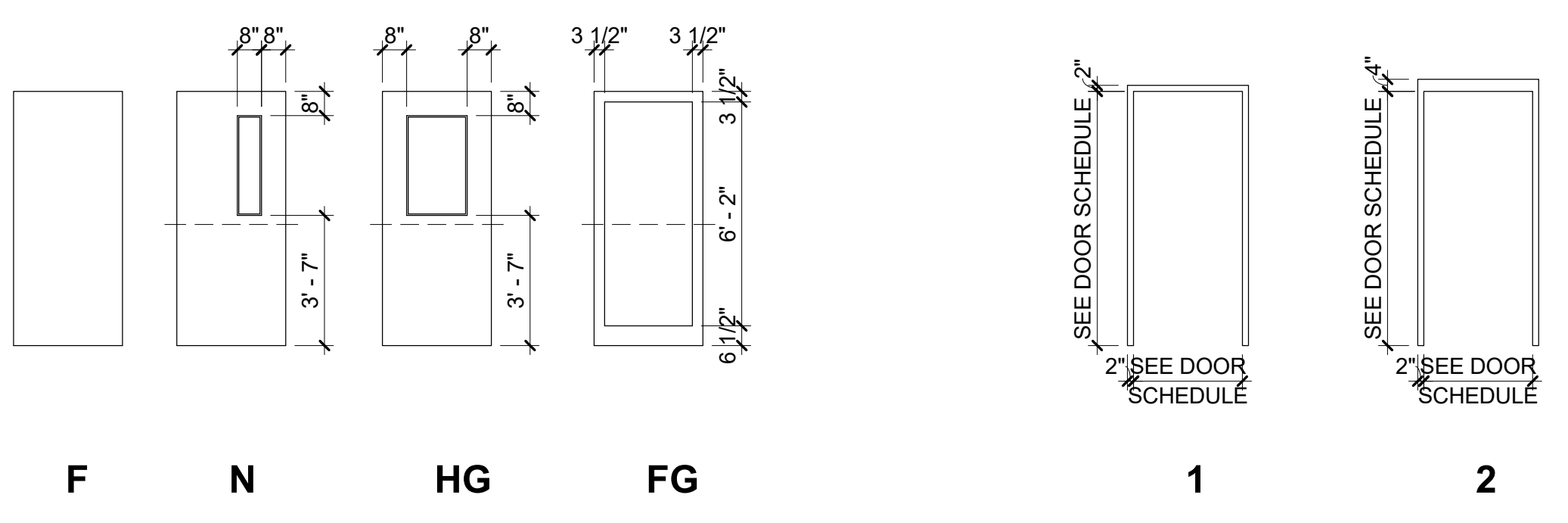
DOOR SCHEDULE											
MARK	WIDTH	HEIGHT	Door Leaves	HDW	DOOR MATERIAL	DOOR TYPE	DOOR FINISH	FRAME MATERIAL	FRAME TYPE	FRAME FINISH	FIRE RATING
A101	3' - 0"	7' - 0"			WOOD	HG	STAIN	HM	1	PAINT	
A102	3' - 0"	7' - 0"			WOOD	HG	STAIN	HM	1	PAINT	
A102-A	3' - 0"	7' - 0"			WOOD	HG	STAIN	HM	1	PAINT	
A103	3' - 0"	7' - 0"			WOOD	HG	STAIN	HM	1	PAINT	
A103-A	3' - 0"	7' - 0"			WOOD	HG	STAIN	HM	1	PAINT	
A104	3' - 0"	7' - 0"			WOOD	HG	STAIN	HM	1	PAINT	
A105	3' - 0"	7' - 0"	2		HM	F	PAINT	HM	2	PAINT	



**1 IDENTIFYING DEVICES**  
3" = 1'-0"



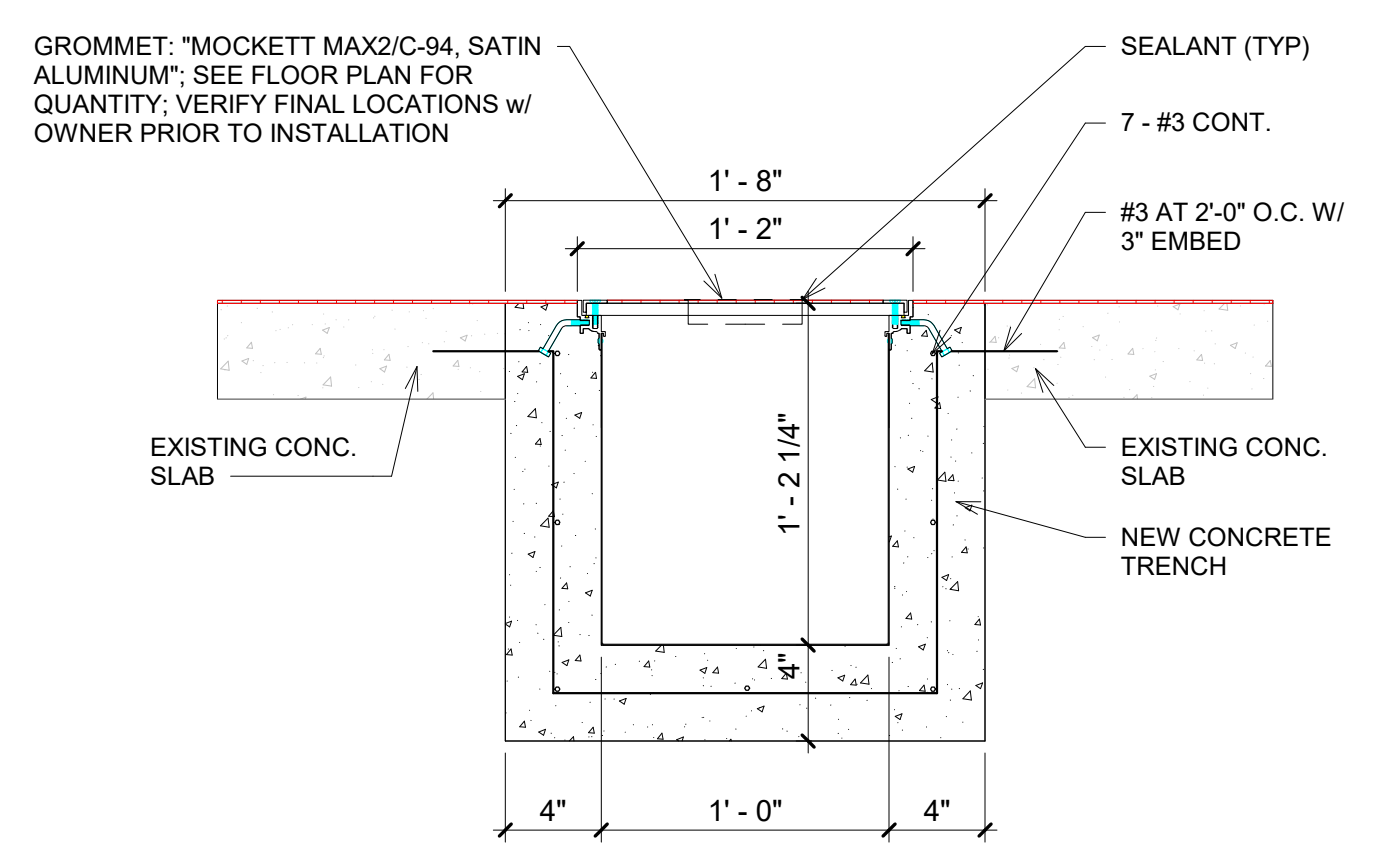
**3 TYPICAL MOUNTING HEIGHTS**  
1/4" = 1'-0"



**4 DOOR ELEVATION SCHEDULE**  
1/4" = 1'-0"

**5 FRAME SCHEDULE**  
1/4" = 1'-0"

TRENCH ACCESS COVER AND FRAME  
 \*BALCO INC. (800)767-0082 www.balcousa.com OR APPROVED EQUAL  
 - TYPE TST-12-500 TRENCH COVER w/ 1/8" RECESS FOR FLOOR INSERT (RUBBER FLOOR FINISH REQUIRED, SEE RFS)  
 - MILL FINISH ALUMINUM EXTRUSIONS & ALUMINUM PLATE  
 - 20 GA. GALVANIZED STEEL TRENCH LINER  
 - F141S BOLTS @ 20" o.c.  
 - ALL STAINLESS STEEL FASTENERS AS REQUIRED



**6 TRENCH DETAIL**  
1 1/2" = 1'-0"



CONSTRUCTION DOCUMENTS

**WORKFORCE TRAINING SPACE**  
for  
CITY OF LEXINGTON, NEBRASKA

PROJECT #: R-0718  
DATE: 2/22/19  
DRAWN: RDS

DATE	DESCRIPTION

© 2019 COPYRIGHT JOSEPH R. HEWGLEY & ASSOCIATES, INC.  
MEMBER AMERICAN INSTITUTE OF ARCHITECTS  
SHEET A501