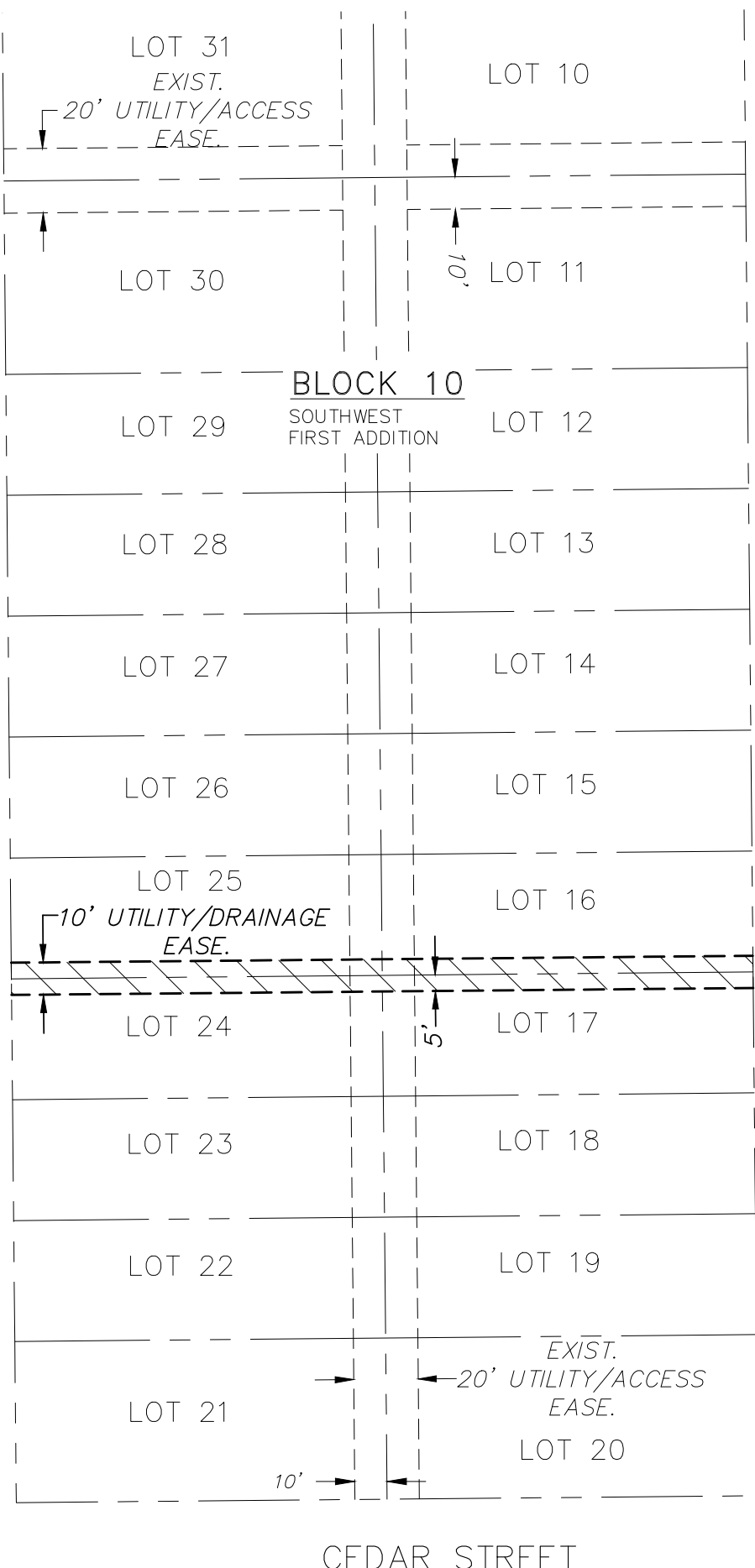




BLOCK 9

ROOSEVELT DRIVE



EISENHOWER DRIVE

BLOCK 1

BLOCK 8

LEGEND

- — — — — EXISTING PROPERTY LINE
- - - - - EXISTING EASEMENT LINE
- - - - - NEW EASEMENT LINE
- NEW UTILITY/DRAINAGE EASEMENT AREA

EASEMENT DESCRIPTION

A 10 FT. UTILITY/DRAINAGE EASEMENT LOCATED IN LOTS 16, 17, 24 AND 25, BLOCK 10, SOUTHWEST FIRST ADDITION AN ADDITION TO THE CITY OF LEXINGTON, DAWSON COUNTY, NEBRASKA, AND MORE PARTICULARLY DESCRIBED AS FOLLOWS:

A 10 FT. UTILITY/DRAINAGE EASEMENT BEING THE SOUTH 5 FT OF LOTS 16 AND 25 AND THE NORTH 5 FT OF LOTS 17 AND 24, ALL IN BLOCK 10, SOUTHWEST FIRST ADDITION AN ADDITION TO THE CITY OF LEXINGTON, DAWSON COUNTY, NEBRASKA.

SAID 10 FT. UTILITY/DRAINAGE EASEMENT CONTAINS A CALCULATED AREA OF 2300.00 SQUARE FEET OR 0.528 ACRES MORE OR LESS.

DWG: F:\2016\3001-3500\016-3239\40-Design\Survey\SRVY\Sheets\1_FPT_2nd_63239.dwg
 USER: jjimenez
 DATE: Jul 14, 2017 9:39am
 XREFS: C:\BASE_63239

PROJECT NO: 2016-3239	10' UTILITY/DRAINAGE EASEMENT		201 East 2nd Street P.O. Box 1072 Grand Island, NE 68802-1072 TEL 308.384.8750 FAX 308.384.8752
DRAWN BY: JMJ			1
DATE: 07.14.2017			EXHIBIT