

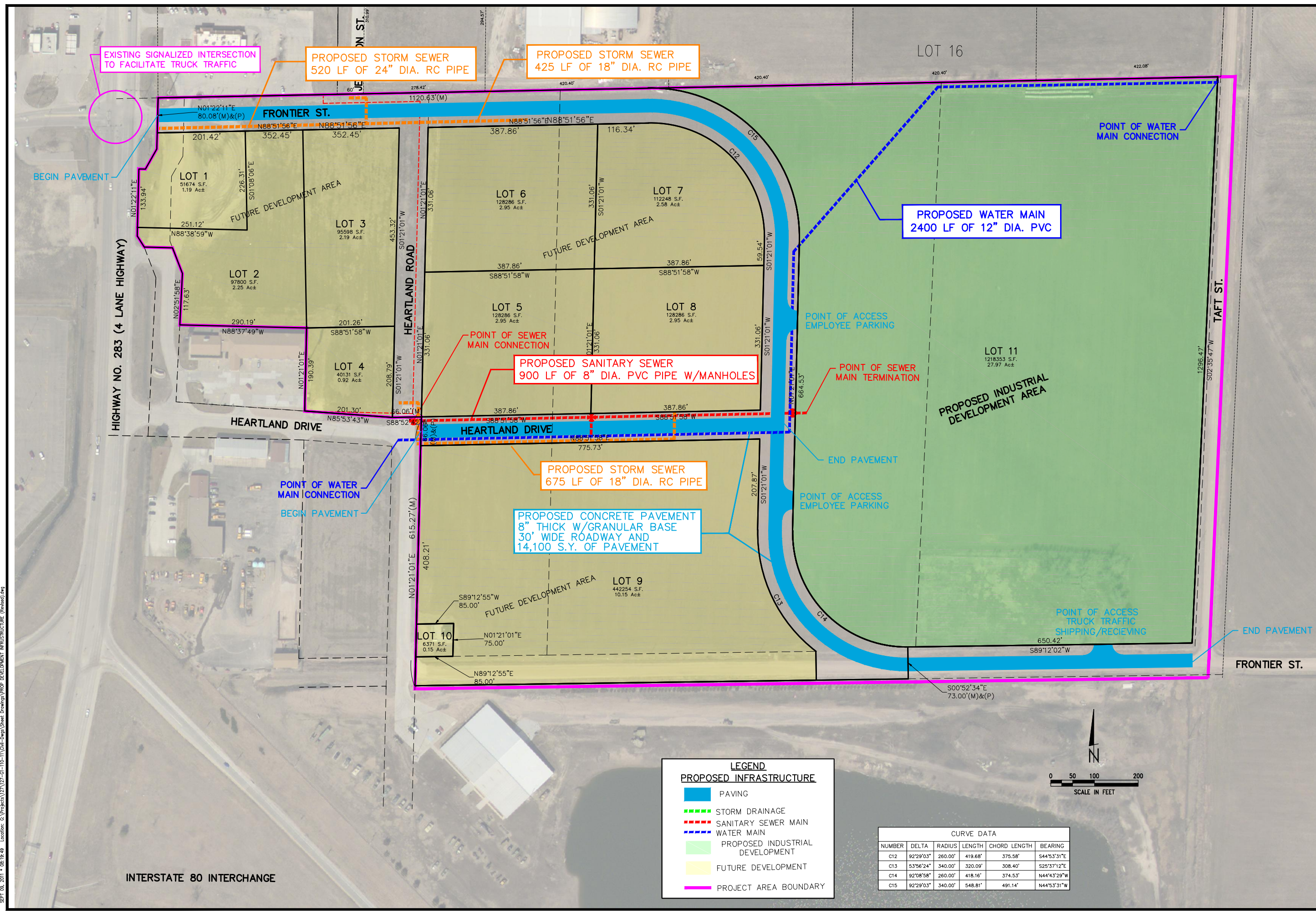
REVISIONS	BY

M&A
 Miller & Associates
 Consulting Engineers, P.C.
 Kearney, NE (308) 234-6456
 McCook, NE (308) 345-3710

SOUTHEAST BUSINESS PARK INFRASTRUCTURE IMPROVEMENTS
PROPOSED INDUSTRIAL DEVELOPMENT AREA
 LEXINGTON, NEBRASKA 2011

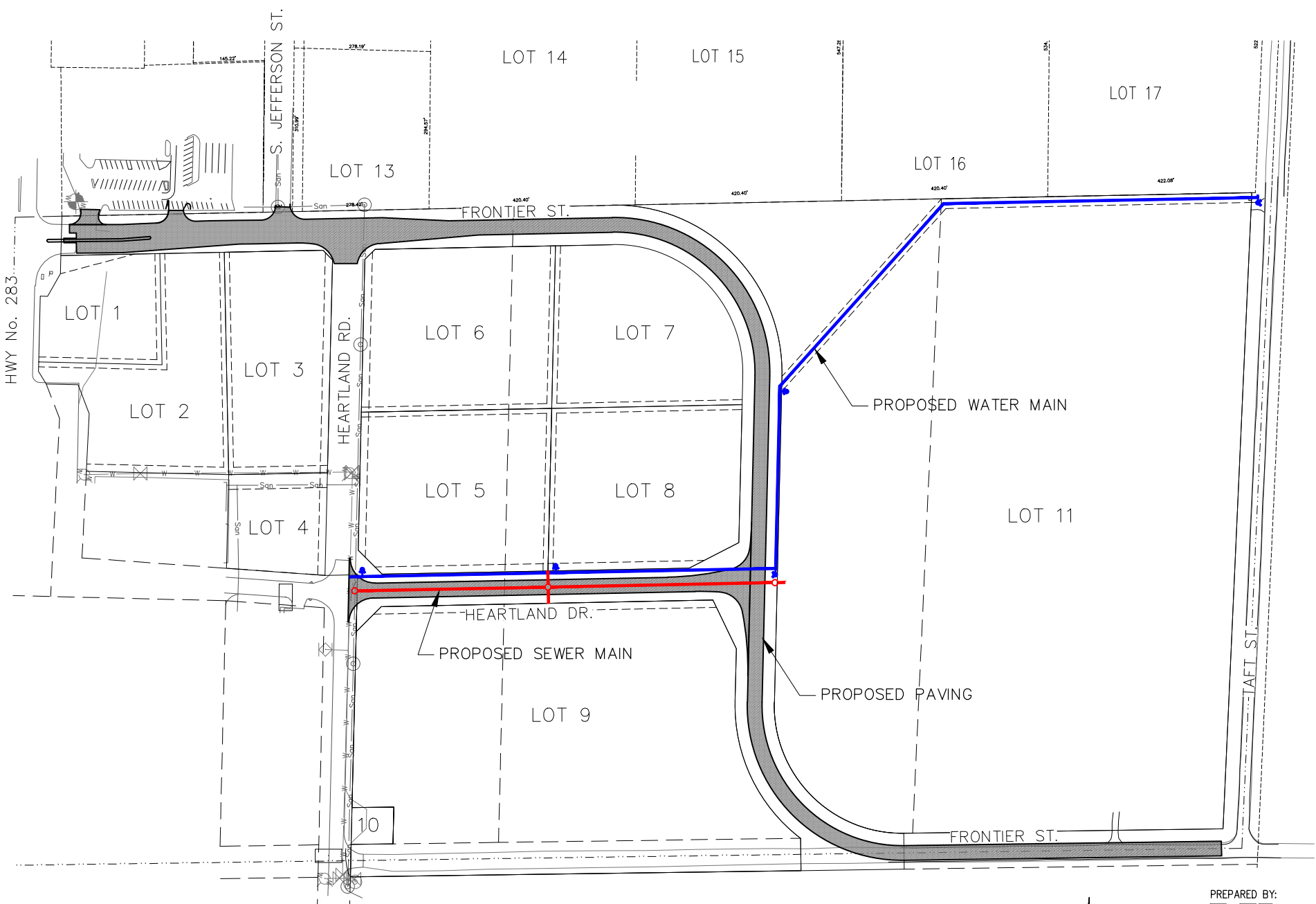
VERIFY SCALES
 BAR IS ONE INCH ON ORIGINAL DRAWING
 IF NOT ONE INCH ON THIS SHEET, ADJUST SCALES ACCORDINGLY.

SCALE: AS SHOWN
 PROJECT NO. 127-G1-110
 DATE: MAY, 2011
 FIELD BOOK M&A DWG NO.
 DRAWN BY: ACO APRVD BY:
 SHEET



SEPT. 08, 2011 * 08:19:49 Location: C:\Projects\127-G1-110-11\Civil-Dwg\Sheet Drawings\PROP DEVELOPMENT INFRASTRUCTURE (Revised).dwg

PLOTTED: 6/22/2012 3:40:58PM 6/22/2012 3:35 PM Andrew C. Olson C:\Projects\127\127-A1-084\Civil-Dwgs\Sheet Drawings\Council Map.dwg



SOUTHEAST BUSINESS PARK IMPROVEMENTS LEXINGTON, NEBRASKA



PREPARED BY:
MA
MILLER & ASSOCIATES
CONSULTING ENGINEERS, P.C.
1111 CENTRAL AVENUE
KEARNEY, NE 68847