



**Miller & Associates**  
CONSULTING ENGINEERS, P.C.

1111 Central Ave. Kearney, NE 68847-683

Tel: 308-234-6456

Fax: 308-234-1146

[www.miller-engineers.com](http://www.miller-engineers.com)

February 23, 2012  
Kearney, Nebraska

Joe Peplitsch  
City of Lexington  
P.O. Box 70  
406 East 7th Street  
Lexington, NE 68850

Re: Airport Road Paving  
Project No. 127-A1-076-08

Dear Joe,

Presented herewith are the Drawings and Specifications for the above referenced project. We will be in attendance at your Council Meeting to answer any questions you may have regarding this project. Upon your approval we would propose the City advertise for bids on March 3<sup>rd</sup>, 10<sup>th</sup> & 17<sup>th</sup>, and open bids on March 22, 2012 at 2:00 PM. An Advertisement for Bids is attached for your publication.

The Engineer's Opinion of Probable Construction Cost ranges between \$160,000 and \$190,000. The window of construction time for the Contractor would be May 7<sup>th</sup> to August 30<sup>th</sup>. From the time the Contractor would initiate construction, he will have 60 days to complete the project.

Should you have any questions regarding this project, please do not hesitate to contact us.

Respectfully submitted,  
MILLER & ASSOCIATES  
CONSULTING ENGINEERS, P.C.



Dana G. Daniels  
Project Manager

DGD/jh

Enclosure

## ADVERTISEMENT FOR BIDS

Separate sealed BIDS will be received at the City Clerk's Office at 406 East 7<sup>th</sup> Street in Lexington, Nebraska on March 22, 2012, until 2:00 PM, Local Time, and then such BIDS shall be publicly opened and read aloud in the City Council Meeting Room for furnishing all equipment, labor, materials and appurtenances required to construct Portland cement concrete pavement and and other such work as may be incidental to **AIRPORT ROAD PAVING**.

The City (Owner) reserves the right to reject any or all bids; and to waive irregularities or informalities to accept the BID it deems most beneficial. Bids received after the specified time of closing will be returned unopened. The Owner will accept only those sealed bids, either hand delivered or received via U.S. Mail or other commercial carrier. Items transmitted by facsimile or electronically will not be accepted.

The Contract Documents may be examined at the following locations:

Miller & Associates, 1111 Central Avenue, Kearney, NE 68847  
City of Lexington, 406 East 7<sup>th</sup> Street, Lexington, NE 68850

Copies of the Contract Documents may be obtained at the office of Miller & Associates, Consulting Engineers, P.C. located at 1111 Central Avenue, P.O. Box 306, Kearney, Nebraska 68847, Telephone 308/234-6456 upon payment of \$50 for each half-size set and \$75 for each full-size set of documents. Documents will not be available electronically. Any PLAN HOLDER, upon returning the CONTRACT DOCUMENTS within fourteen (14) days of the BID OPENING, and in good condition, will be refunded \$10.

Each BIDDER will be required to submit with his proposal, a certified check, cashier's check or bid bond made payable, without condition, to the City Clerk, Lexington, Nebraska, in an amount equal to five percent (5%) of the proposal.

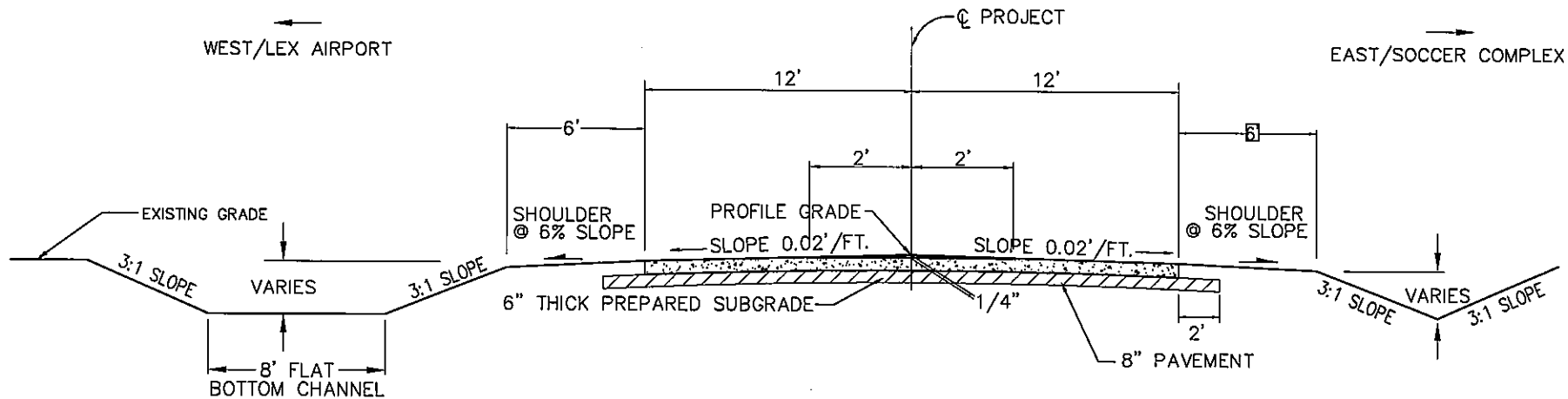
(SEAL)

**CITY OF LEXINGTON, NEBRASKA**  
(OWNER)

ATTEST:

\_\_\_\_\_  
City Clerk

By \_\_\_\_\_  
Mayor



**24' TANGENT SLAB PAVEMENT**  
NO SCALE

PREPARED BY:  
  
 MILLER & ASSOCIATES  
 CONSULTING ENGINEERS, P.C.  
 1111 CENTRAL AVENUE  
 KEARNEY, NE 68847

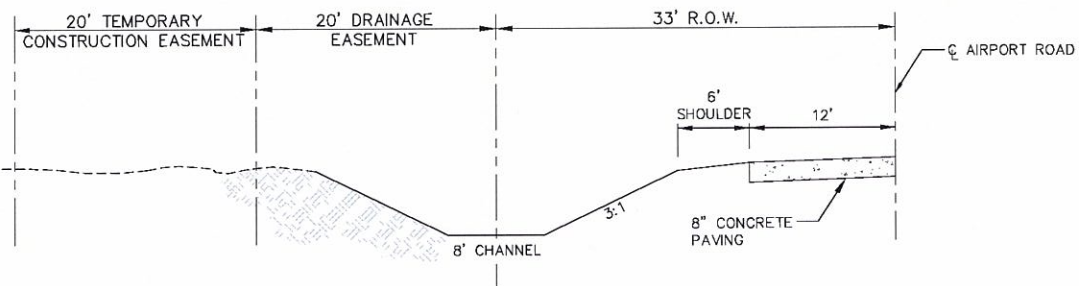
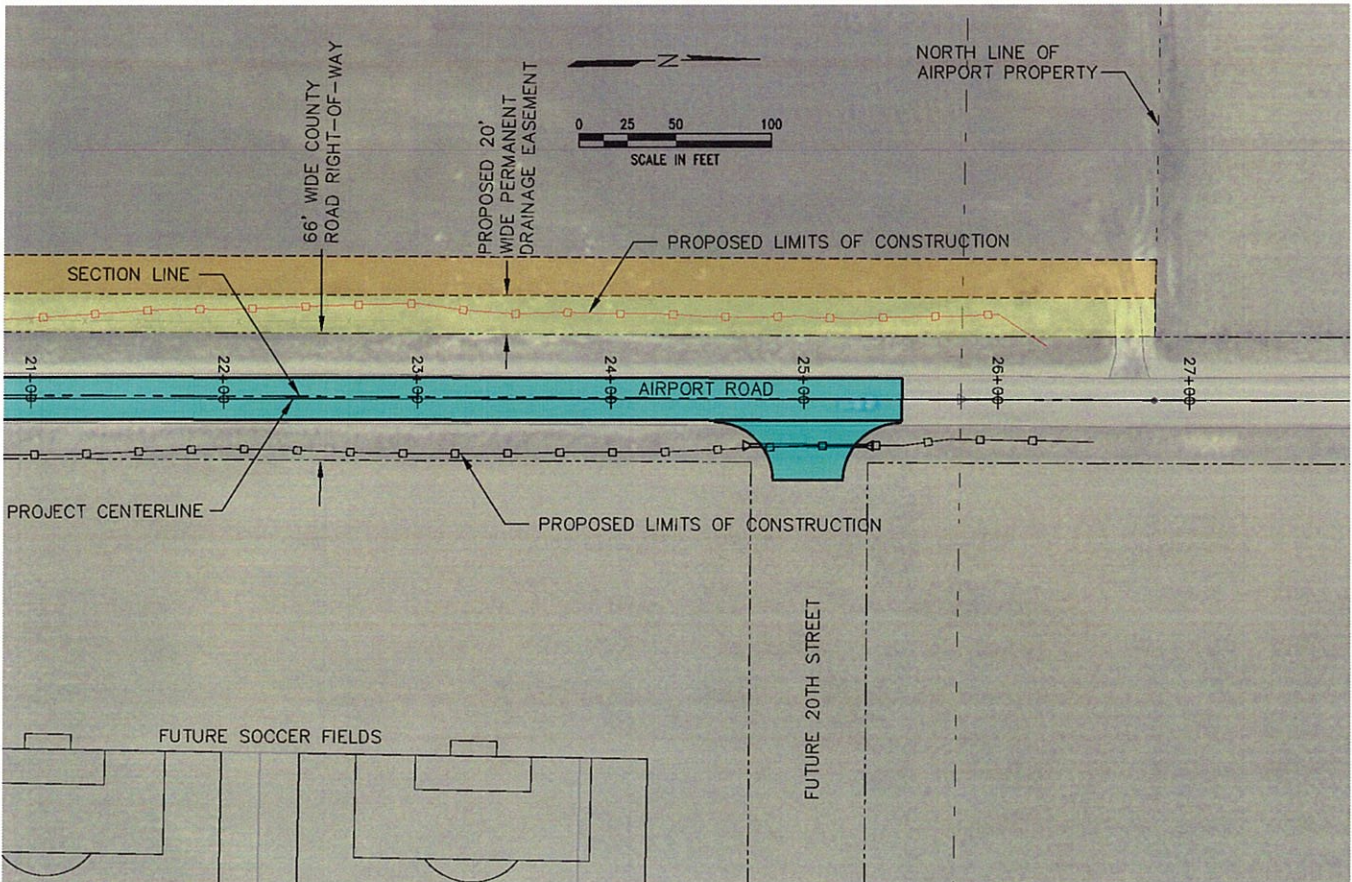
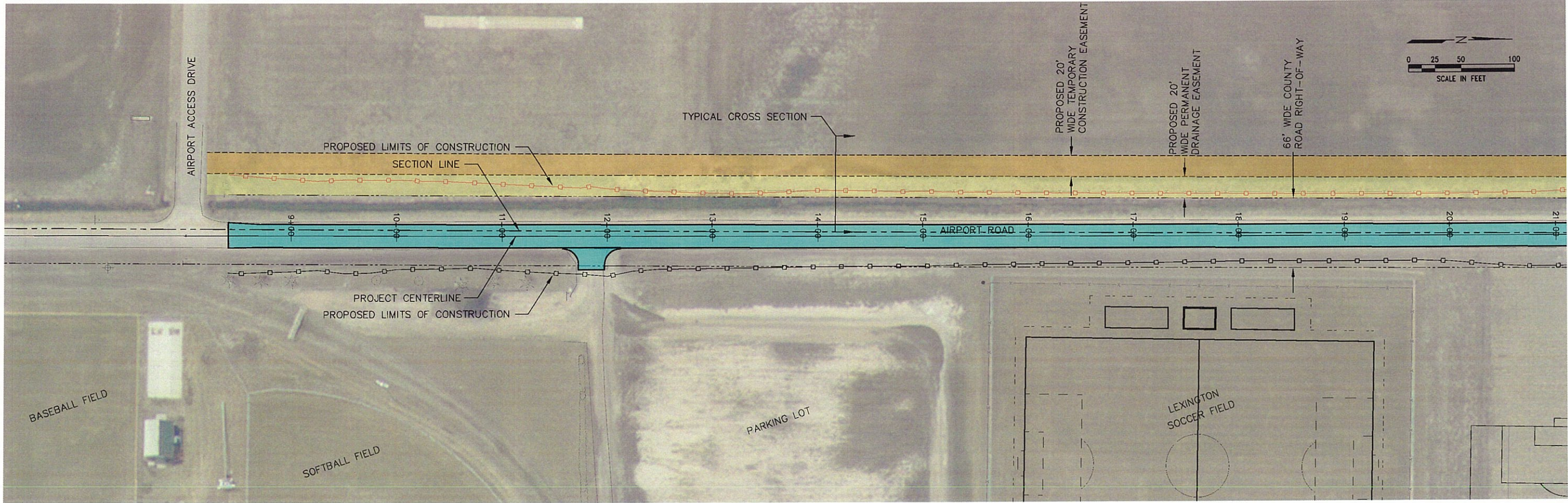
**TYPICAL ROADWAY SECTION**  
**AIRPORT ROAD PAVING**  
 PROJECT NO. 127-A1-076  
 LEXINGTON, NEBRASKA



Miller & Associates  
 Consulting Engineers, P.C.  
 Kearney, NE (308) 234-6456  
 McCook, NE (308) 345-3710

**AIRPORT ROAD PAVING**  
**LIMITS OF CONSTRUCTION**  
 LEXINGTON, NEBRASKA 2012

This document and the ideas and designs incorporated herein, as an instrument of professional service, is the property of Miller & Associates and is not to be used in whole or in part, for any other project without the written authorization of Miller & Associates. ©2012 Miller & Associates.



TYPICAL CROSS SECTION

**VERIFY SCALES**

BAR IS ONE INCH ON ORIGINAL DRAWING  
 IF NOT ONE INCH ON THIS SHEET, ADJUST SCALES ACCORDINGLY.

SCALE:	AS SHOWN
PROJECT NO.	127-A1-076
DATE:	FEBRUARY, 2012
FIELD BOOK	M&A DWG NO.
DRAWN BY:	APRVD BY:
ACO	
SHEET	

PLOTED: 2/20/2012 8:43 AM, SAVED: 2/20/2012 9:17 AM, AUTHOR: C. Olson, PROJECT: 127-A1-076-00, Dwg: 127-A1-076-00-01.dwg