



Miller & Associates
CONSULTING ENGINEERS, P.C.

1111 Central Ave. Kearney, NE 68847-6833

Tel: 308-234-6456

Fax: 308-234-1146

www.miller-engineers.com

March 19, 2009
Kearney, Nebraska

Mayor and City Council
City of Lexington
P.O. Box 70
Lexington, NE 68850

Re: Monroe Street Paving Improvements
Project No. 127-A1-073-07

Dear Council Members:

Presented herewith are the Drawings and Specifications for the above referenced project. We will be in attendance at your March 24th Council Meeting to present this project. Upon your approval we would propose the City open bids on April 21st at 2:00 P.M. with the required advertising taking place in the interim. An advertisement for bids is attached for your publication.

The Engineer's Opinion of Probable Construction Cost ranges between \$500,000 and \$625,000.

Should you have any questions regarding this project, please do not hesitate to contact us.

Respectfully submitted,
MILLER & ASSOCIATES
CONSULTING ENGINEERS, P.C.

Dana G. Daniels

DGD/jh

ADVERTISEMENT FOR BIDS

Separate sealed BIDS will be received at the City Clerk's Office by the City Clerk, in City of Lexington, 406 East 7th Street, Lexington, Nebraska on April 21, 2009, until 2:00 PM, Local Time, and then such BIDS shall be publicly opened and read aloud in the City Council Chambers for furnishing all equipment, labor, materials and appurtenances required to construct concrete pavement replacement, concrete pavement, asphaltic concrete overlay, handicap sidewalk improvements, and other such work as may be incidental to **MONROE STREET PAVING IMPROVEMENTS**.

The City of Lexington (Owner) reserves the right to reject any or all bids; and to waive irregularities or informalities to accept the BID it deems most beneficial. Bids received after the specified time of closing will be returned unopened. The Owner will accept only those sealed bids, either hand delivered or received via U.S. Mail or other commercial carrier. Items transmitted by facsimile or electronically will not be accepted.

A pre-bid conference has been scheduled for April 9th at 10:00 AM, at City Hall. BIDDERS are encouraged to attend and participate in the conference.

The Contract Documents may be examined at the following locations:

Miller & Associates, 1111 Central Avenue, Kearney, NE 68847
City of Lexington, P.O. Box 70, Lexington, NE 68850

Copies of the Contract Documents may be obtained at the office of Miller & Associates, Consulting Engineers, P.C. located at 1111 Central Avenue, P.O. Box 306, Kearney, Nebraska 68847, Telephone 308/234-6456 upon payment of \$55.00 for each half-size set. Full-size sets of documents can be obtained for a deposit of \$75.00. Documents will not be available electronically. Any PLAN HOLDER, upon returning the CONTRACT DOCUMENTS within fourteen (14) days of the BID OPENING, and in good condition, will be refunded \$10.00.

Each BIDDER will be required to submit with his proposal, a certified check, cashier's check or bid bond made payable, without condition, to the City Clerk, Lexington, Nebraska, in an amount equal to five percent (5%) of the proposal.

Attention of BIDDERS is particularly called to the requirements as to conditions of employment to be observed and minimum wage rates to be paid under the contract, Section 3, Segregated Facility, Section 109 and E.O. 11246.

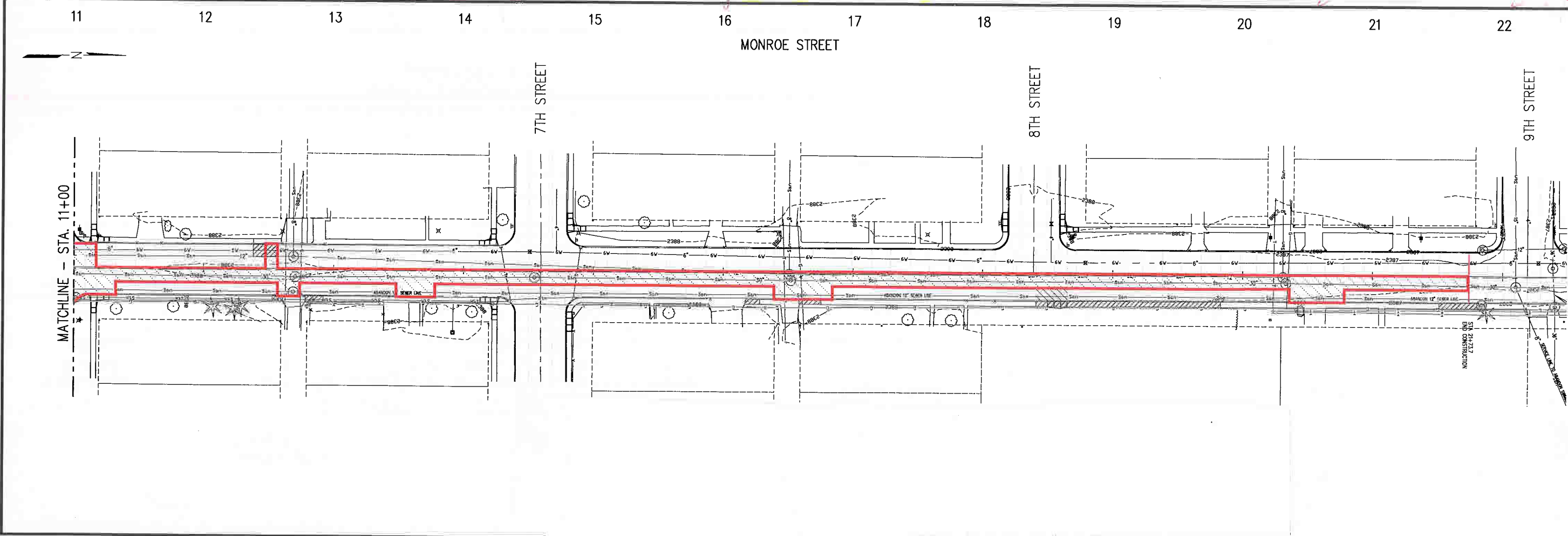
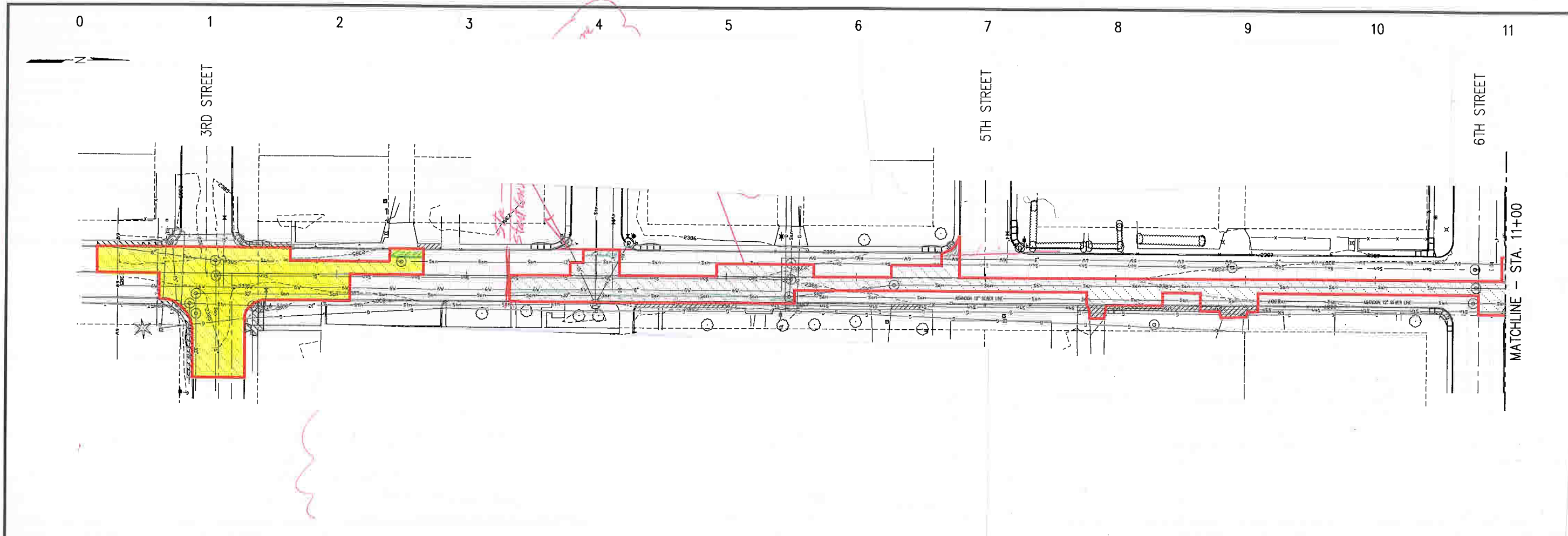
(SEAL)

CITY OF LEXINGTON
(OWNER)

ATTEST:

City Clerk

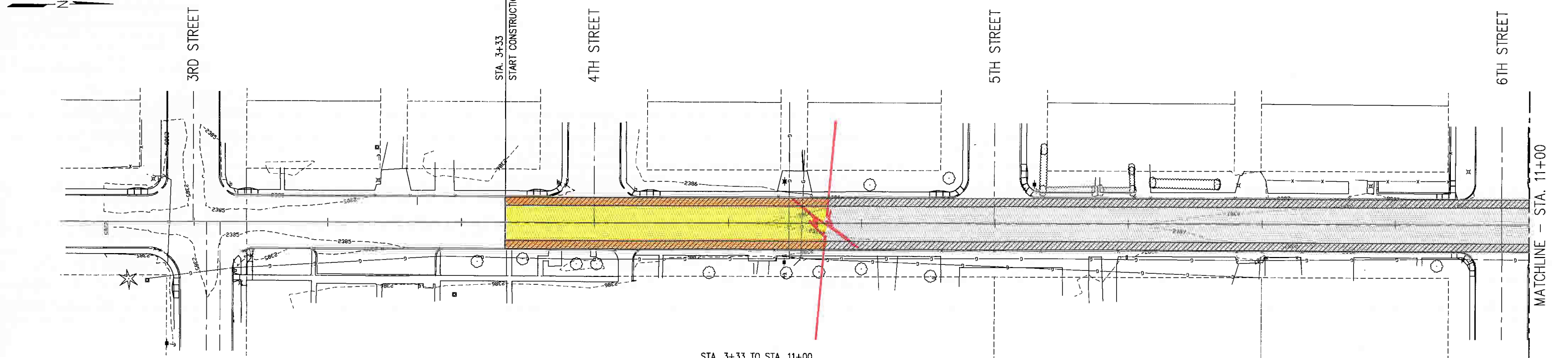
By _____
Mayor



MAR 11, 2009 14:16:57 Location: C:\Projects\127127-AI-025-07\Drawings\SI-08.dwg

0 1 2 3 4 5 6 7 8 9 10 11

MONROE STREET

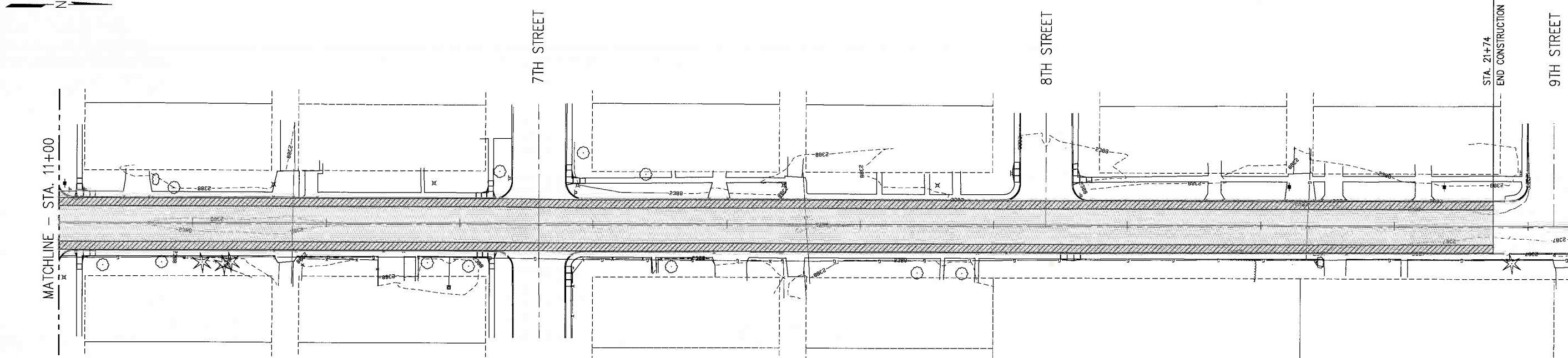


STA. 3+33 TO STA. 11+00
 COLD CONCRETE MILLING, CLASS 5 - 1023 S.Y.
 INSTALL PETROMAT FABRIC 2,985 S.Y.
 OVERLAY ASPHALTIC CONCRETE 520 TONS
 ADJUST MANHOLE TO GRADE - 8 EACH
 ADJUST VALVE BOX TO GRADE - 1 EACH

NOTE:
 SEE SHEETS 3 THRU 7 FOR MANHOLE LOCATIONS AND SCHEDULES.

11 12 13 14 15 16 17 18 19 20 21 22

MONROE STREET



STA. 11+00 TO STA. 21+74
 COLD CONCRETE MILLING, CLASS 5 - 1432 S.Y.
 INSTALL PETROMAT FABRIC 4175 S.Y.
 OVERLAY ASPHALTIC CONCRETE 730 TONS
 ADJUST MANHOLE TO GRADE - 9 EACH
 ADJUST VALVE BOX TO GRADE - 1 EACH

NOTE:
 SEE SHEETS 3 THRU 7 FOR MANHOLE LOCATIONS AND SCHEDULES.

REVISIONS	BY

M&A
 Miller & Associates
 Consulting Engineers, P.C.
 Kearney, NE (308) 234-6456
 McCook, NE (308) 345-3710

MONROE STREET PAVING IMPROVEMENTS
ASPHALT OVERLAY PLAN
 LEXINGTON, NEBRASKA 2009

VERIFY SCALES
 BAR IS ONE INCH ON ORIGINAL DRAWING
 IF NOT ONE INCH ON THIS SHEET, ADJUST SCALES ACCORDINGLY.

SCALE:	1" = 40'
PROJECT NO.	127-A1-073-07
DATE:	FEBRUARY, 2009
FIELD BOOK	M&A DWG NO.
DRAWN BY:	APRVD BY:
DDM	DGD
SHEET	8

MAR 24, 2009 10:47:02 Location: C:\projects\127\127-A1-073-07\DWG\15H-08.dwg

This document, and the ideas and designs incorporated herein, are an instrument of professional service, and the property of Miller & Associates and is not to be used in whole or in part, for any other project without the written authorization of Miller & Associates.