

20th Street

Project Area

**Block 3 Parkview
Addition**

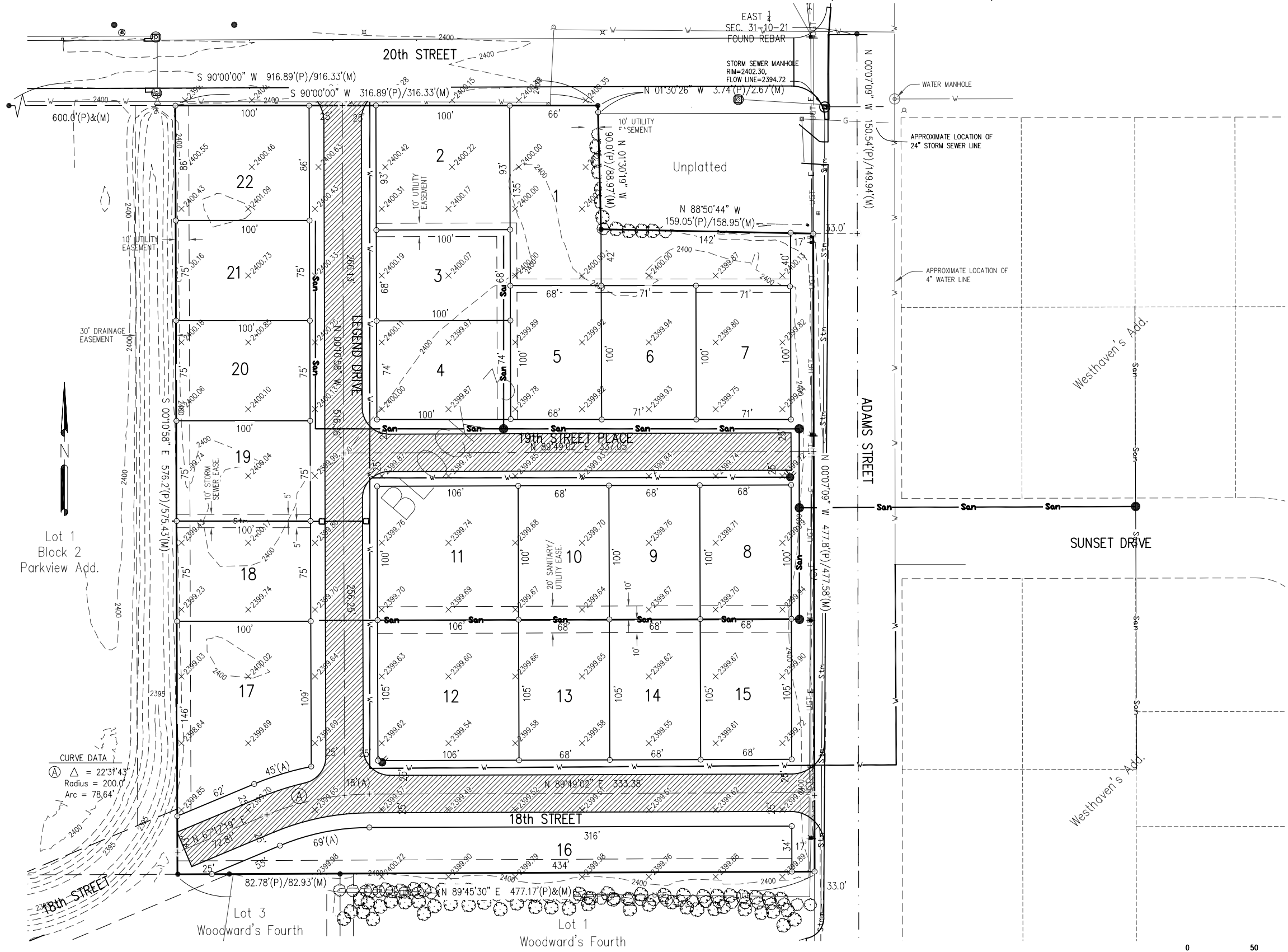
ADAMS N

SUNSET DR

LAKEN

HW

PRELIMINARY PLAT
REPLAT OF BLOCK 3, PARKVIEW ADDITION
 AN ADDITION TO THE CITY OF LEXINGTON, DAWSON COUNTY, NEBRASKA



LEGAL DESCRIPTION
 Block 3, Parkview Addition, an addition to the City of Lexington, Dawson County, Nebraska.

0 50 100
 SCALE IN FEET
 ● = CORNERS FOUND (5/8" REBAR, EXCEPT AS INDICATED)
 ○ = CORNERS ESTABLISHED (CAPPED 5/8" x 24" REBAR)
 + = TEMPORARY POINT
 (P) = PLATTED DISTANCES
 (M) = MEASURED DISTANCES
 NOTE: 5.95 Ac±

MA
 Miller & Associates
 1111 CENTRAL AVENUE
 KEARNEY, NE 68847-6833
 Tel: 308-234-6456
 Fax: 308-234-1146

FEB 24, 2009 * 15:49:10 G:\Projects\127\127-18\2009\127-18-007-09 Replat Block 3 Parkview Add\Subdivision\Pre\127-18-007-09.dwg